

This work was written as part of one of the author's official duties as an Employee of the United States Government and is therefore a work of the United States Government. In accordance with 17 U.S.C. 105, no copyright protection is available for such works under U.S. Law.

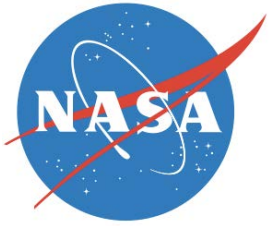
Public Domain Mark 1.0

<https://creativecommons.org/publicdomain/mark/1.0/>

Access to this work was provided by the University of Maryland, Baltimore County (UMBC) ScholarWorks@UMBC digital repository on the Maryland Shared Open Access (MD-SOAR) platform.

Please provide feedback

Please support the ScholarWorks@UMBC repository by emailing scholarworks-group@umbc.edu and telling us what having access to this work means to you and why it's important to you. Thank you.



Spaceborne observations of sun glint and near-cloud aerosols

Tamás Várnai^{1,2}, Alexander Marshak¹, Guoyong Wen^{1,3}, Weidong Yang^{1,4}, Thomas Eck^{1,4},
Robert Levy¹, Alexander Kostinski⁵

1: NASA GSFC, 2: UMBC JCET, 3: Morgan State Univ., 4: USRA, 5: Michigan Technological
University

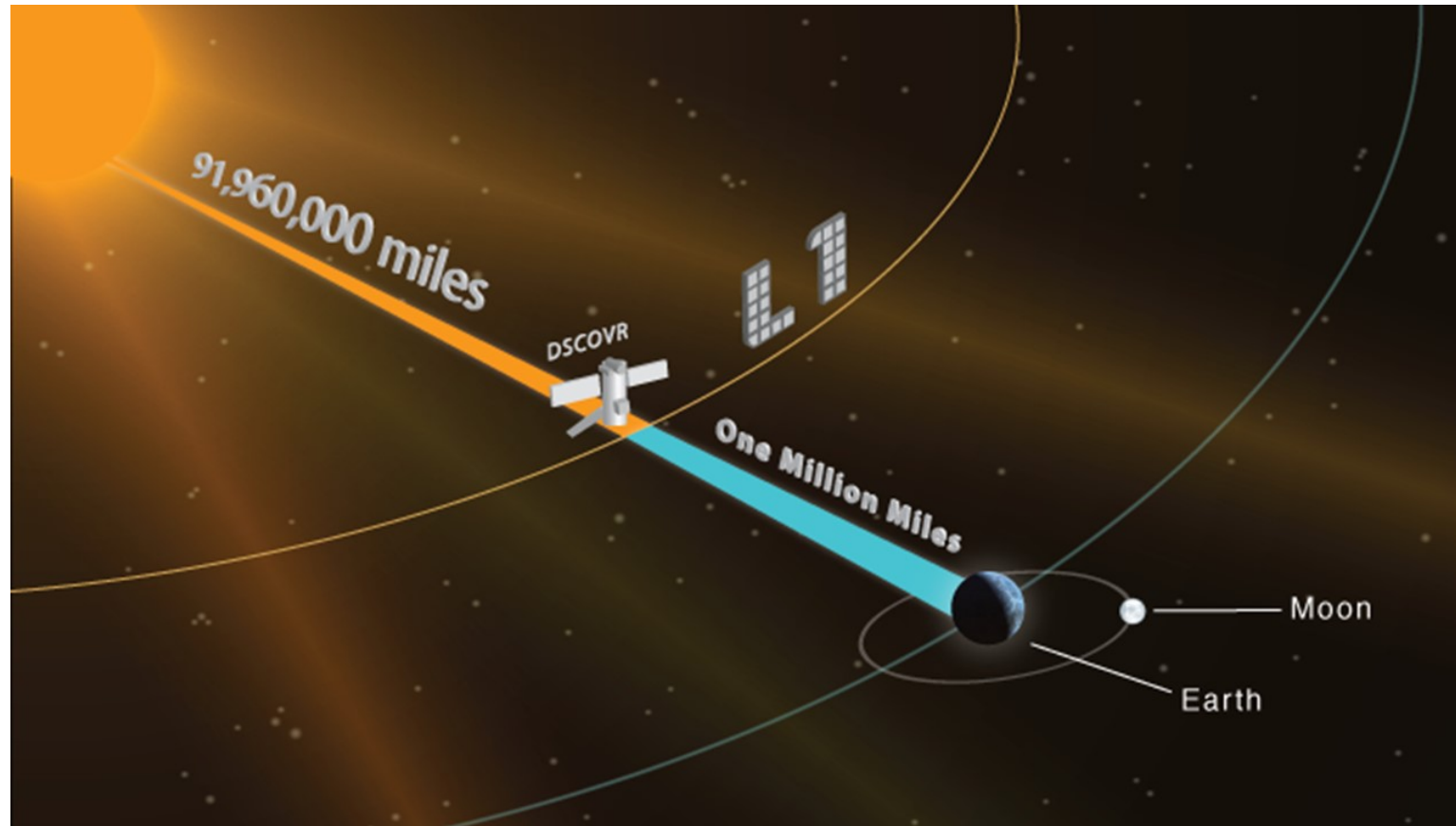
Earth Day tweet from Al Gore



DSCOVR's EPIC camera: images of Earth's sunlit side



The DSCOVR spacecraft is at the L1 Lagrangian point

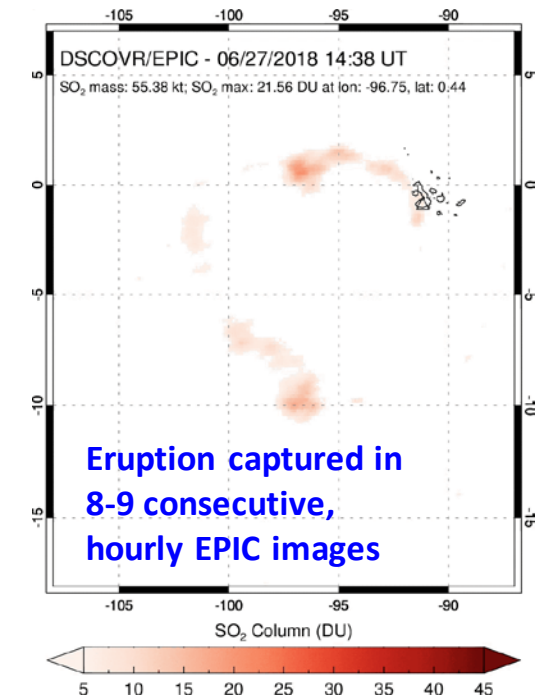
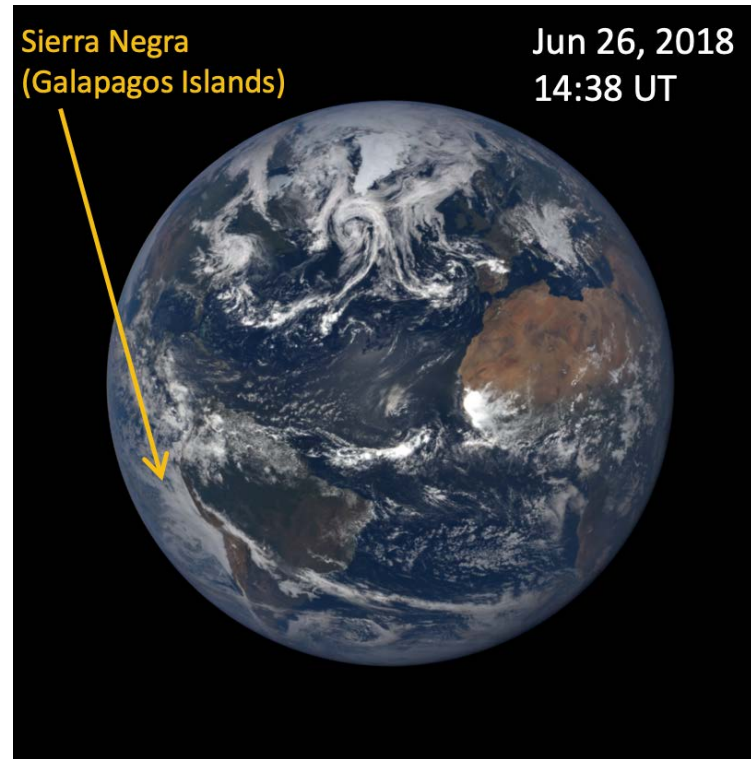


In 2018, [Epic.gsfc.nasa.gov](https://epic.gsfc.nasa.gov) was the 9th most popular NASA website



Many DSCOVR science products are available

- Ozone
- Volcanic SO₂
- UV aerosol
- Clouds
- Atmospheric correction
- Vegetation

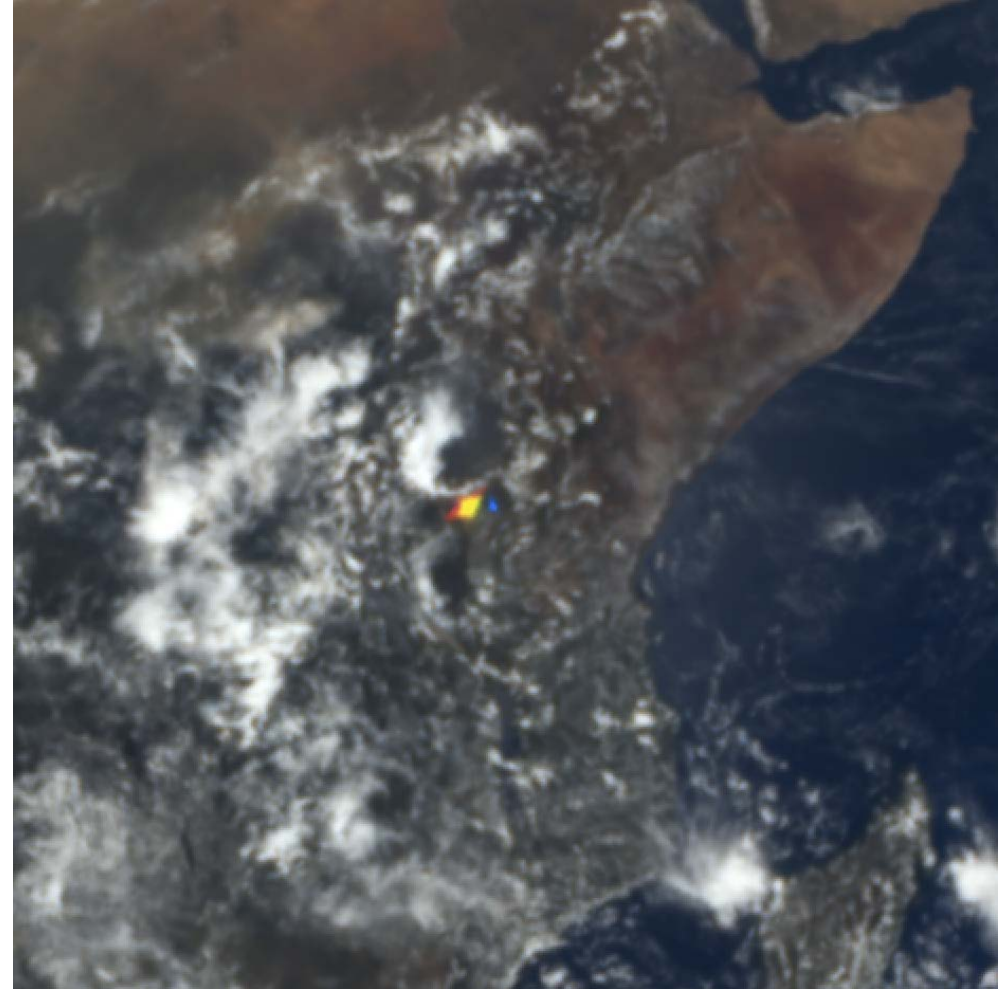
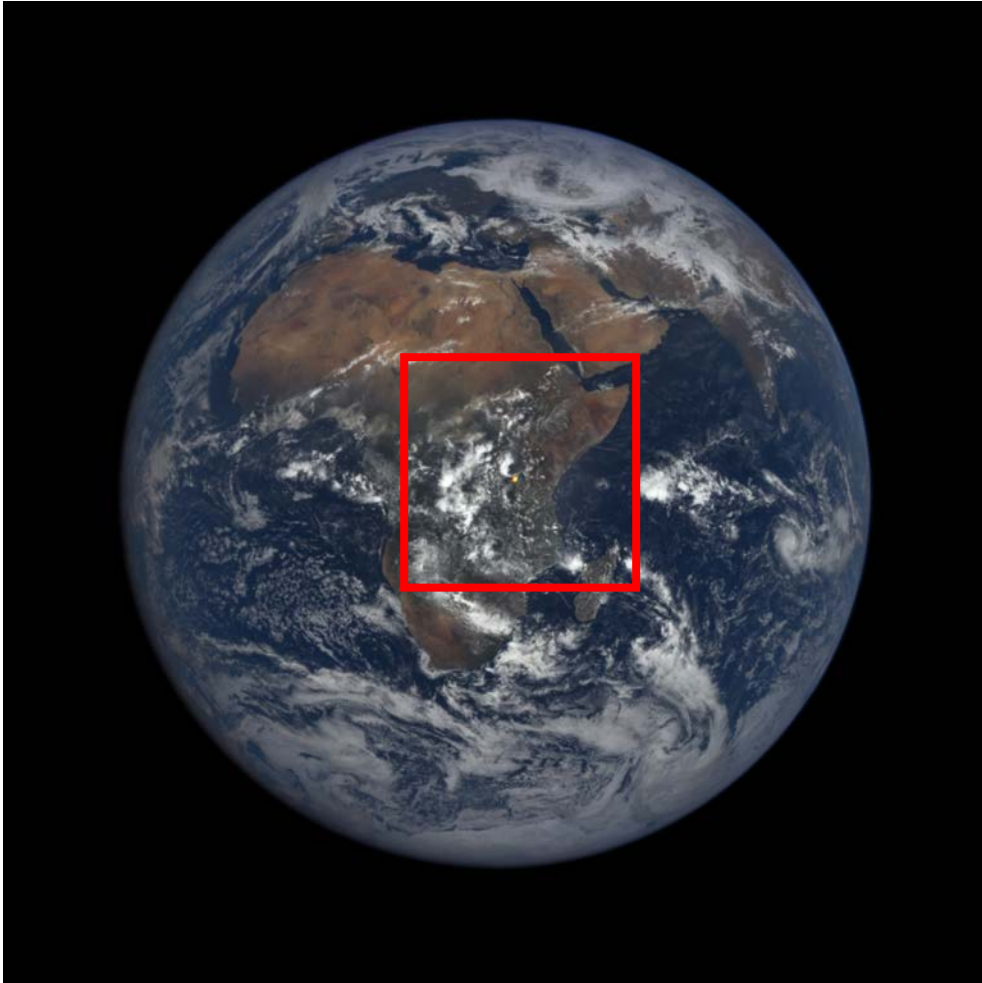


First observations of volcanic eruption clouds from the L1 Earth-Sun Lagrange point by DSCOVR/EPIC

S. A. Carn¹, N. A. Krotkov², B.L. Fisher^{2,3}, C. Li^{2,4}, and A.J. Prata⁵

¹Michigan Technological University, ²NASA GSFC, ³SSAI, ⁴ESSIC, ⁵AIRES Pty Ltd. *GRL*, 2018

EPIC images often contain colorful bright spots



2016 03 17, 09:46 UTC

Likely cause of such spots: ice crystals in clouds

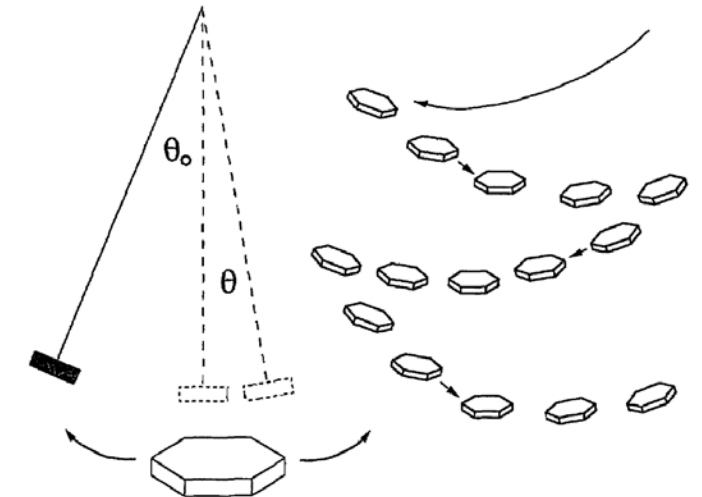
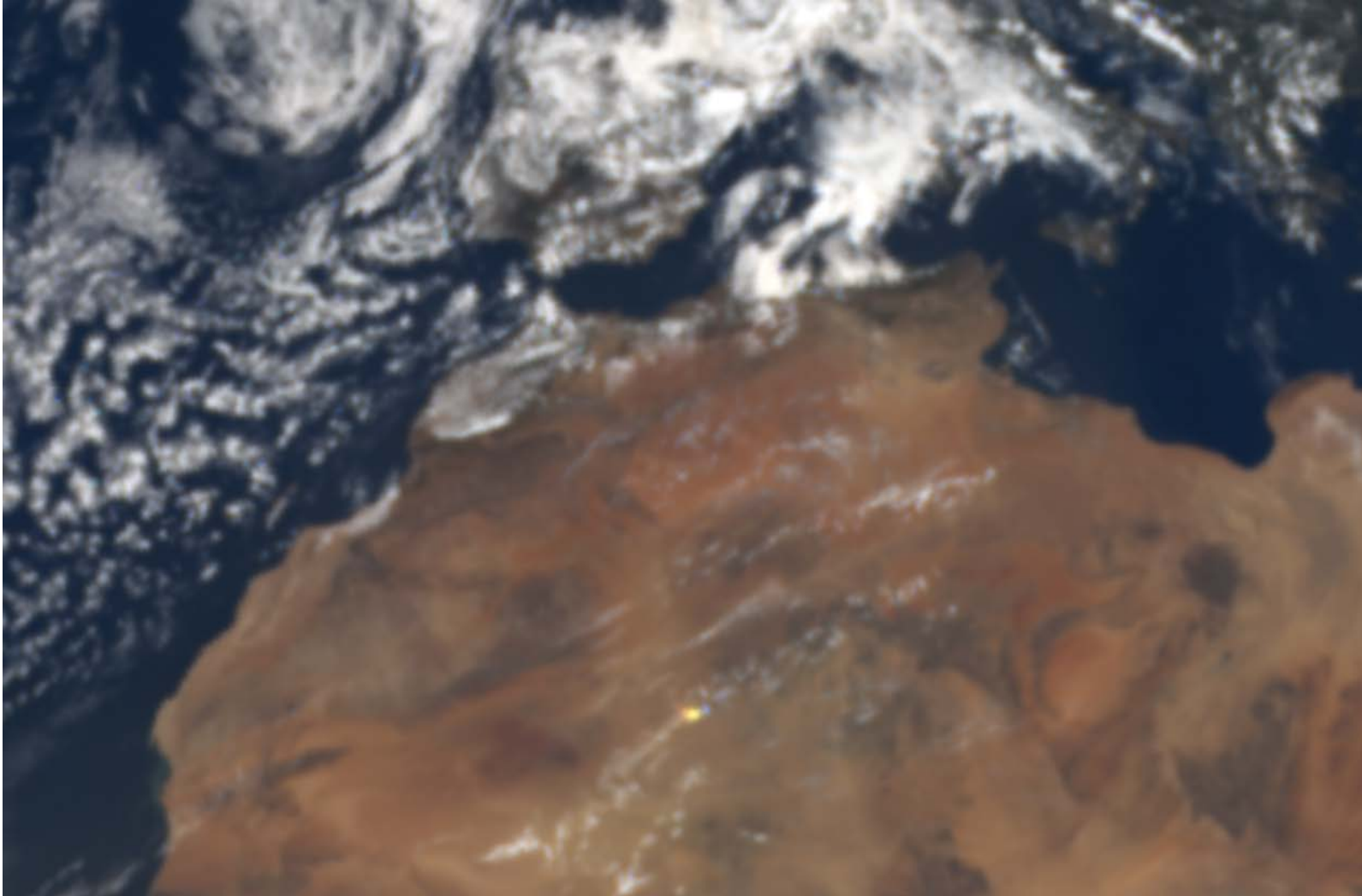


Fig. 8. Pendulum motion of a plate crystal.

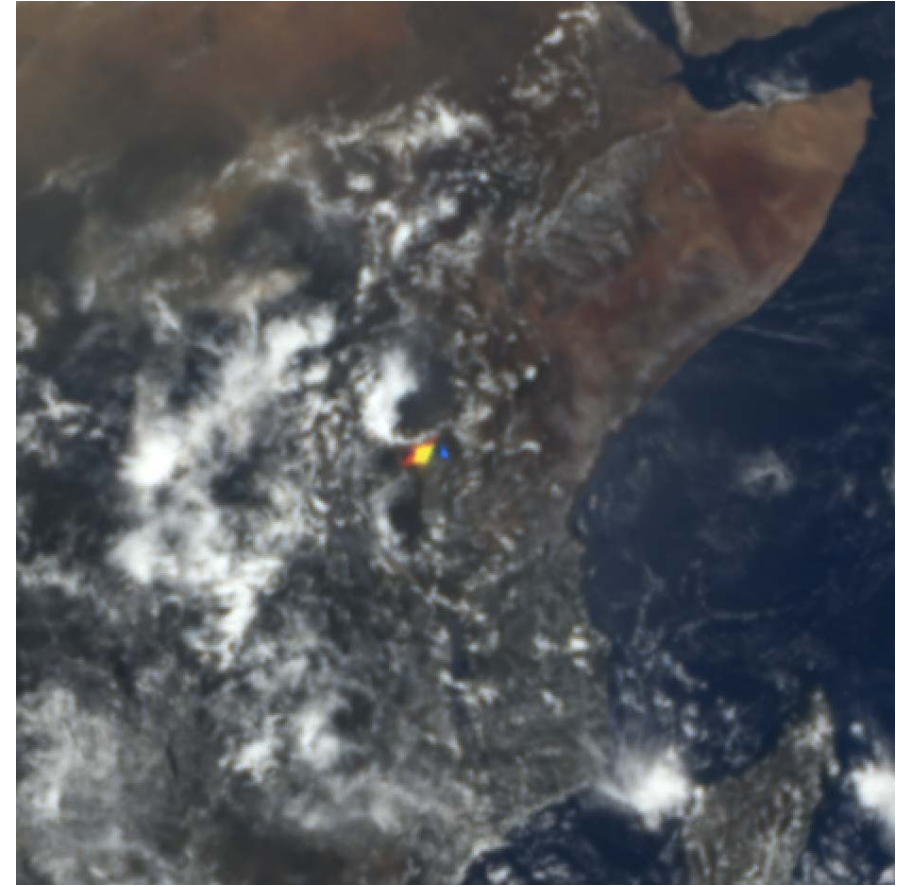
20 July 1994 / Vol. 33, No. 21 / APPLIED OPTICS 4583

Glint form horizontal ice crystals in clouds (subsun)

Photo from aircraft



EPIC image

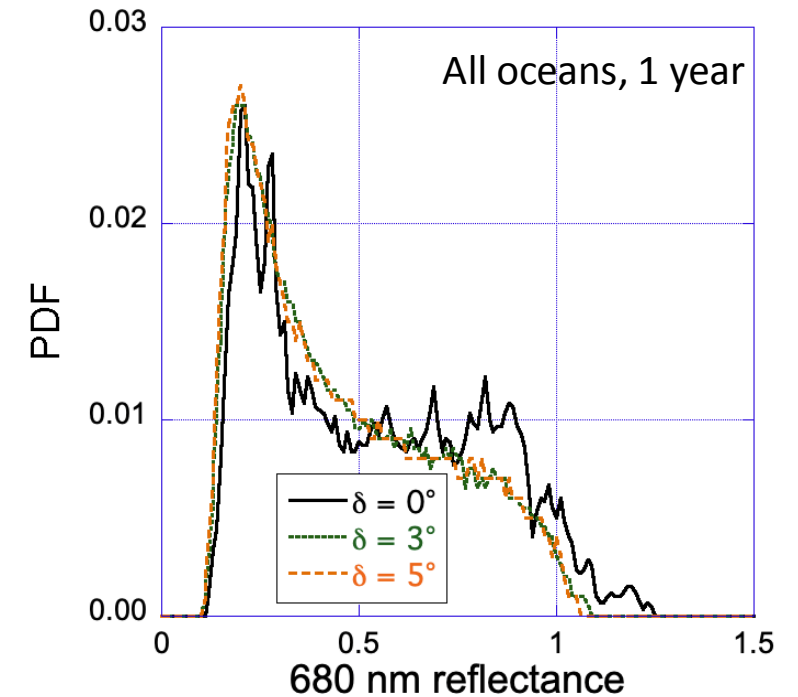
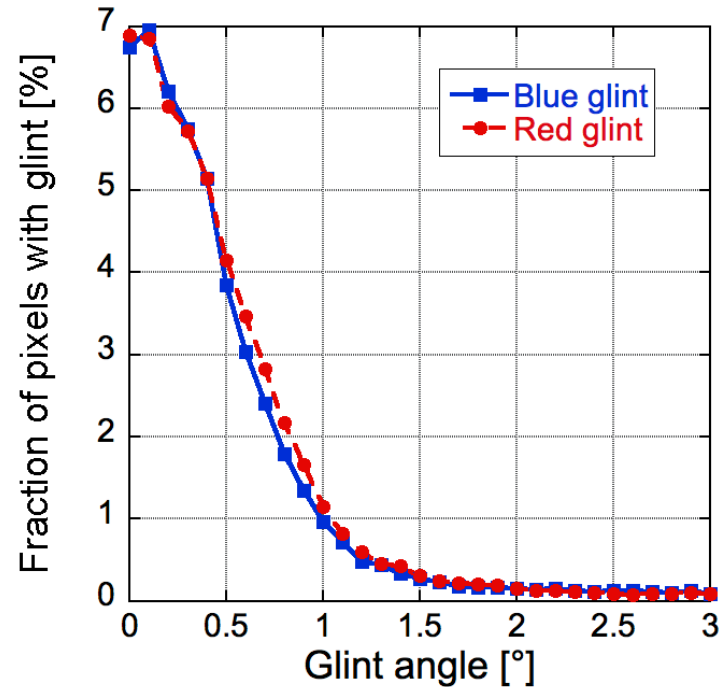
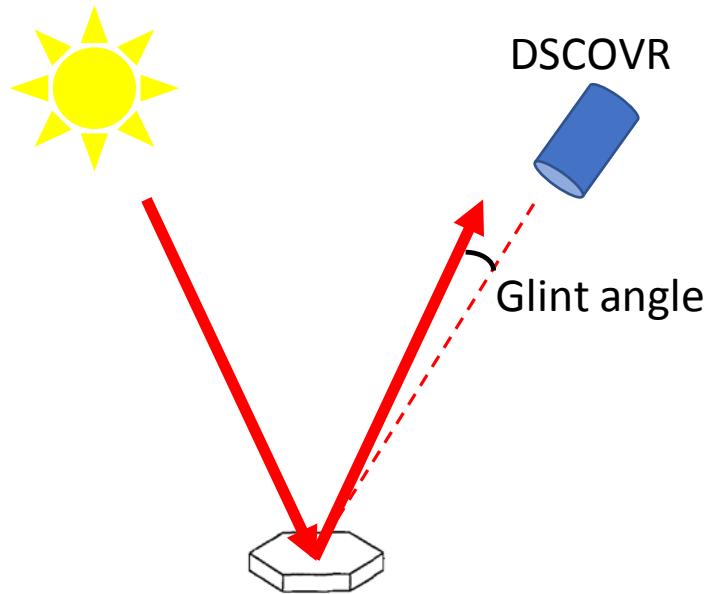


EPIC filter wheel



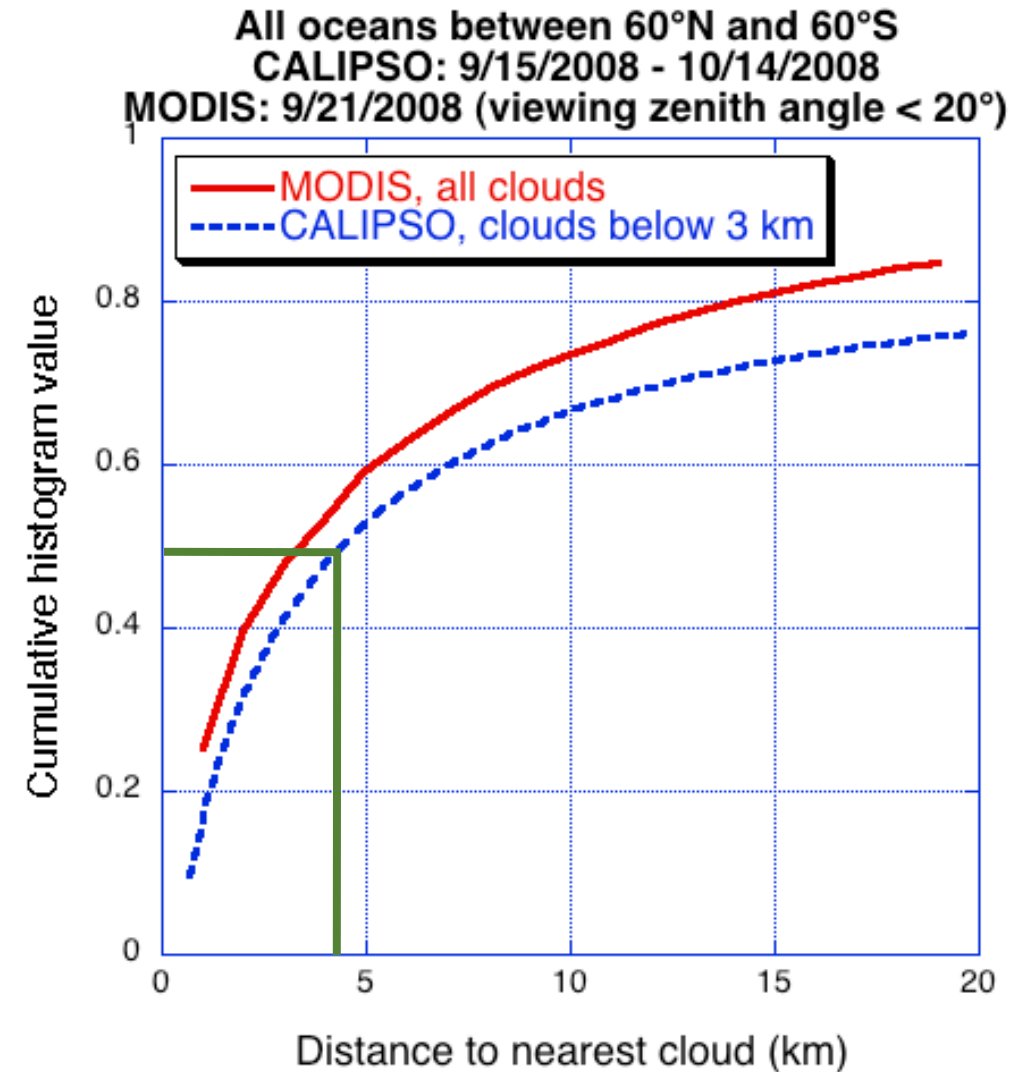
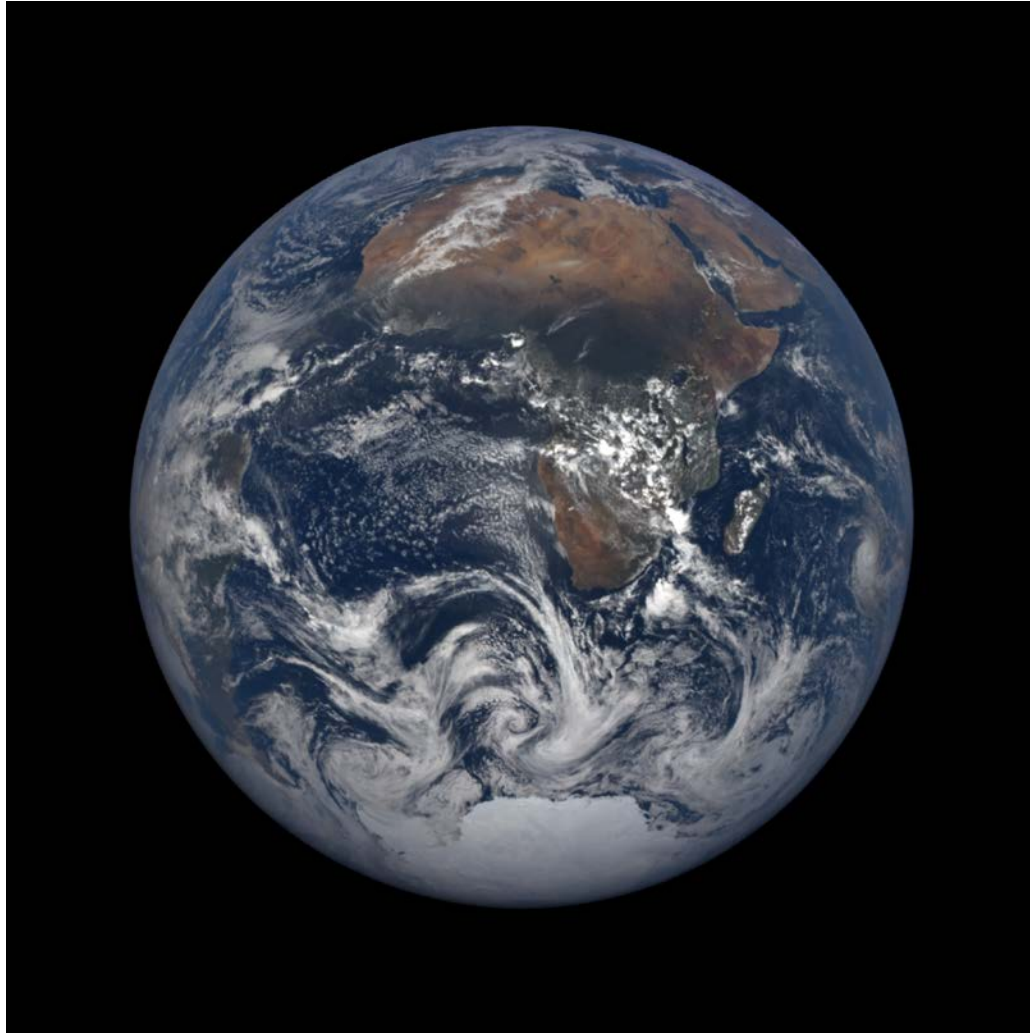
EPIC can be used as quasi multi-angle instrument

Statistically, how bright and wide are glints at various wavelengths?



What are the prevalence, size, and tilt of horizontally oriented ice crystals, and how do these crystals affect cloud albedo?

Most clear areas are not too far from clouds



Aerosol remote sensing is especially difficult near clouds

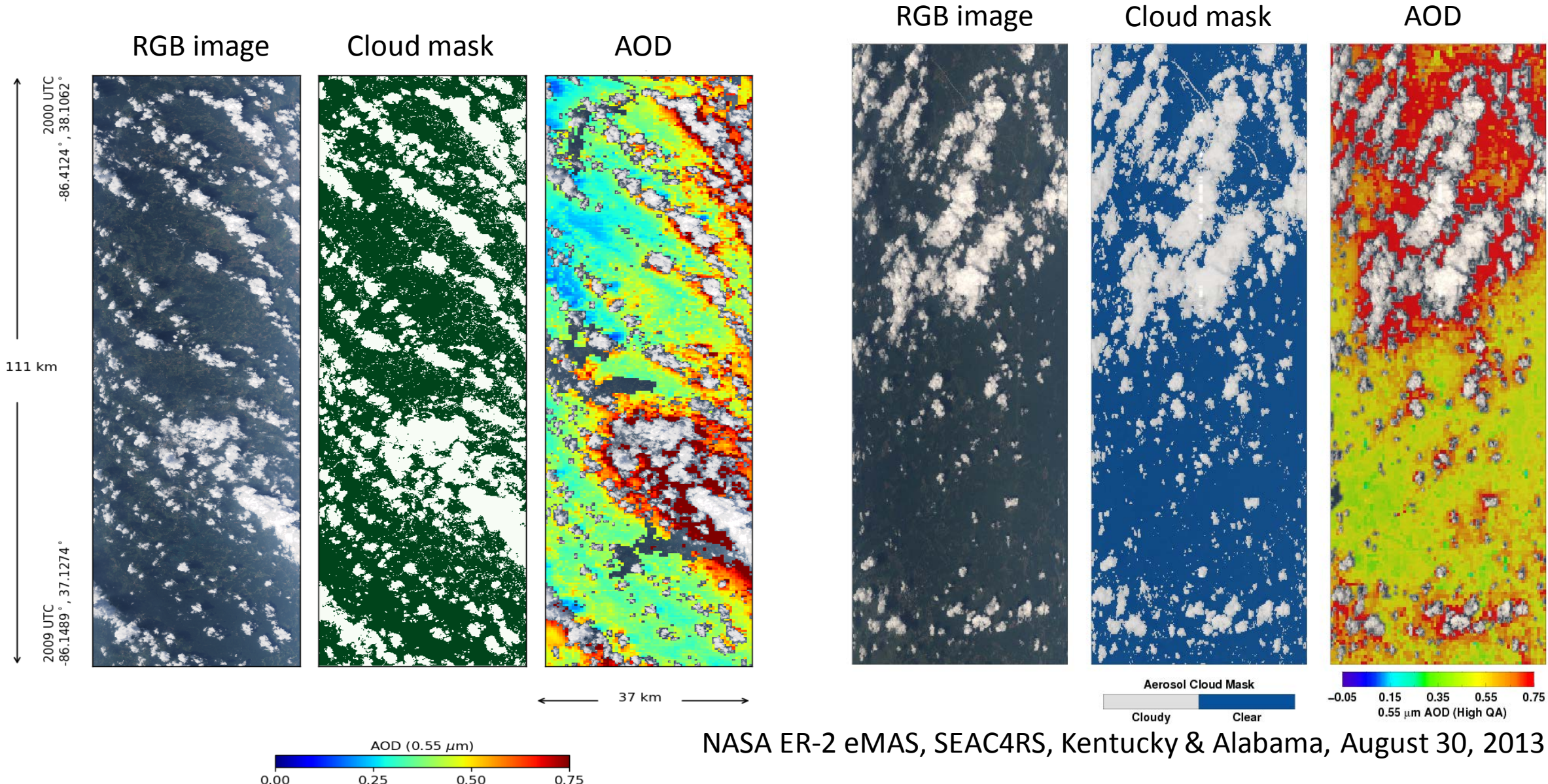


Saharan dust & clouds

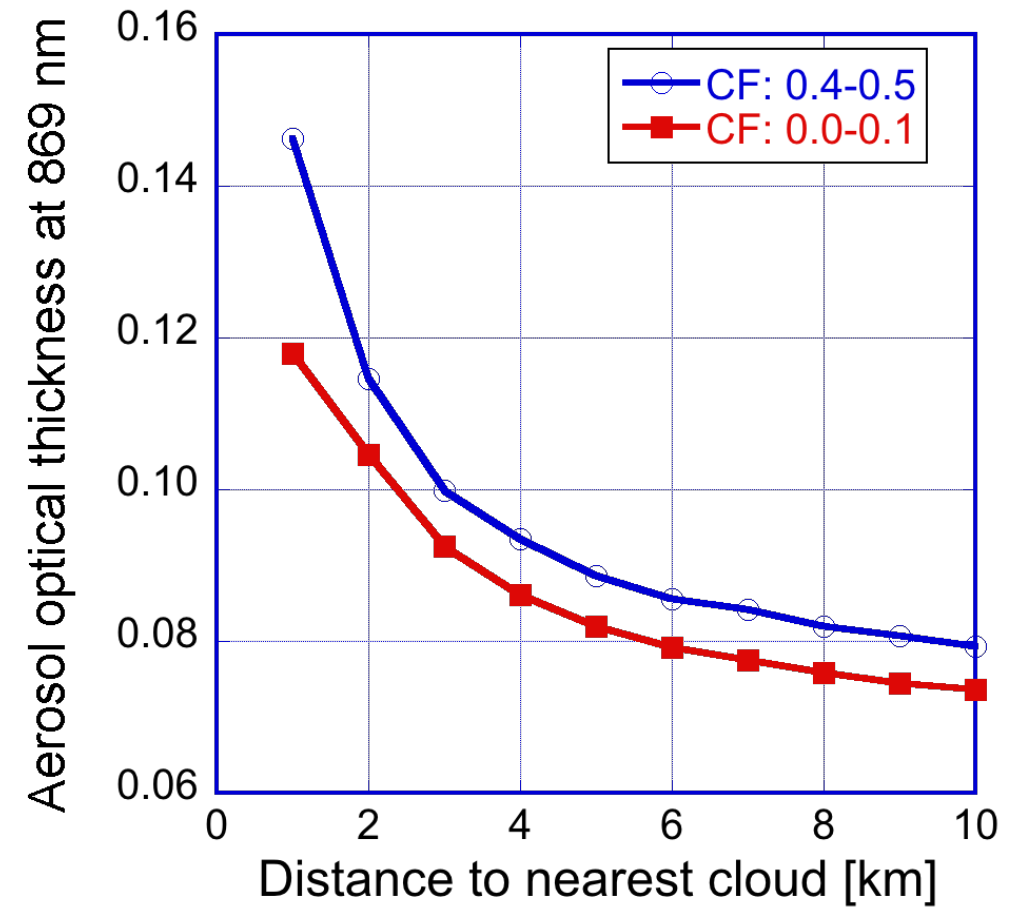


Arctic haze

Aerosols are different near clouds; ignoring this would underestimate aerosol direct and indirect radiative effects

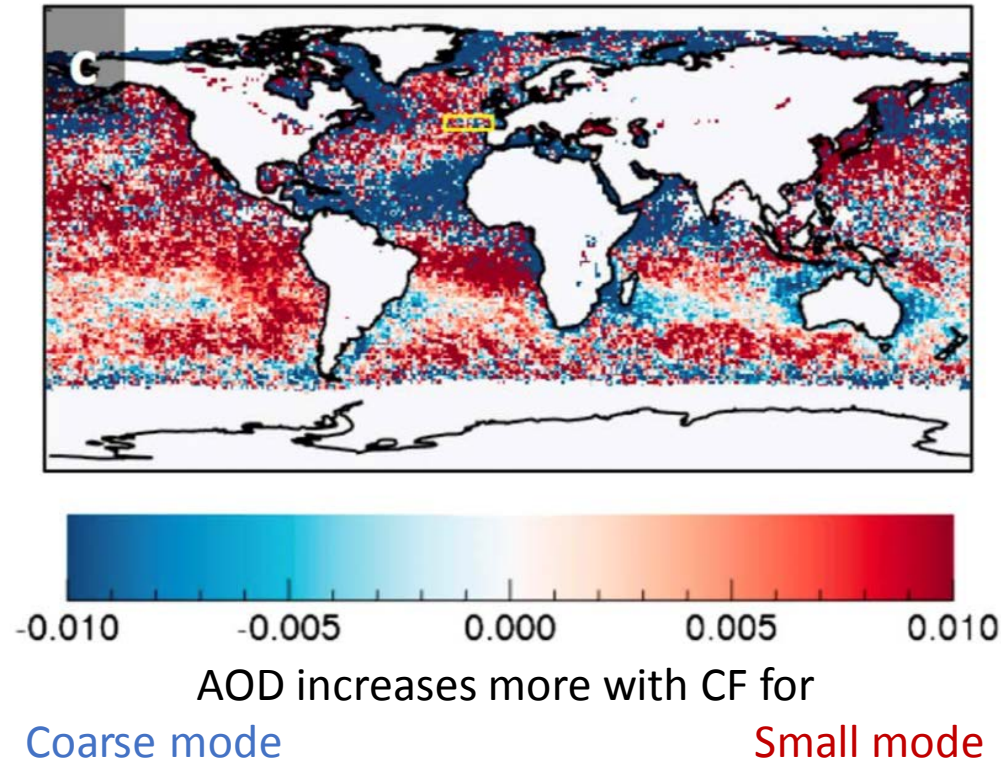


AOD increases near clouds



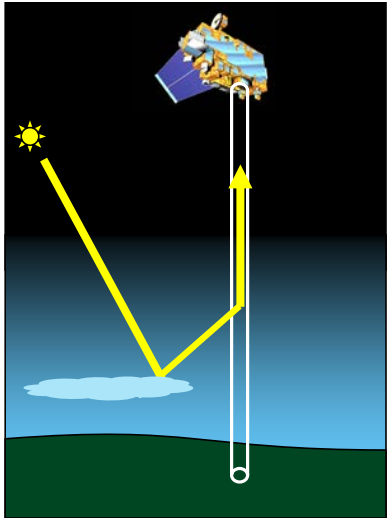
Retrieved $0.55 \mu\text{m}$ AOD is 50% higher in the half of data that is closer to clouds

Cloud effects on size distributions are more complex

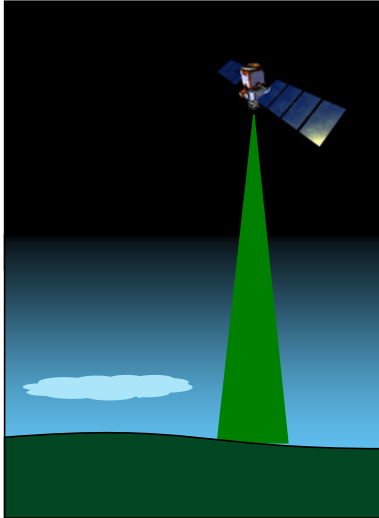


Several processes contribute to near-cloud enhancements

MODIS



CALIOP

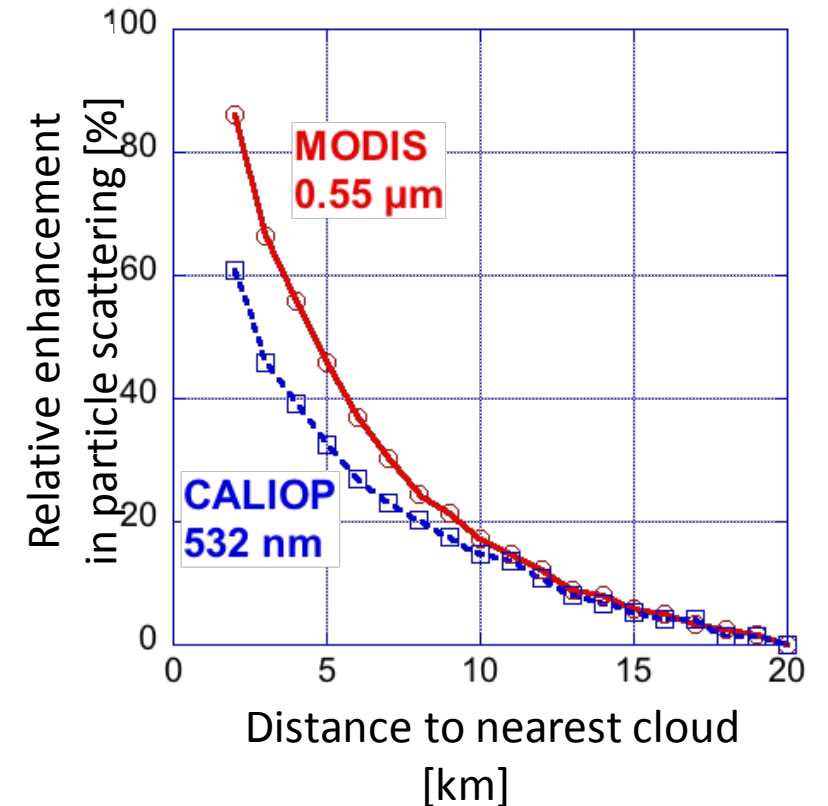


Both MODIS & CALIOP observe:

- Aerosol swelling
- Cloud processing
- Cloud contamination

MODIS data also affected by:

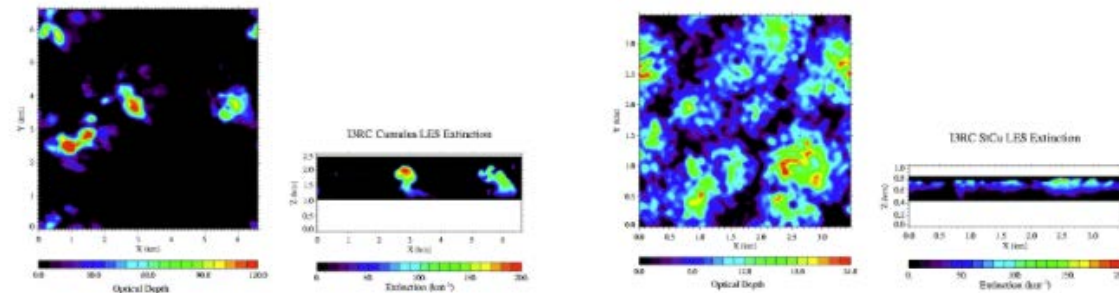
- 3D enhancement
- Instrument blurring



Online 3D radiative transfer simulator is available

- Quick 1D & 3D Monte Carlo simulations through web interface (15 sec - 4 min)
- Goal: help initial exploration of ideas, class projects
- Part of the Intercomparison of 3D Radiation Codes (I3RC) project: i3rcsimulator.umbc.edu

Sample input LES fields



Summary

- We explore using EPIC data to constrain the prevalence and size of horizontally oriented ice crystals and their impact on Earth's albedo.
- Clouds and cloud-related processes affect a large portion of aerosols; we seek to help better characterize the affected aerosols and their radiative impacts.