

Spc

LB

1885

.F7

N4

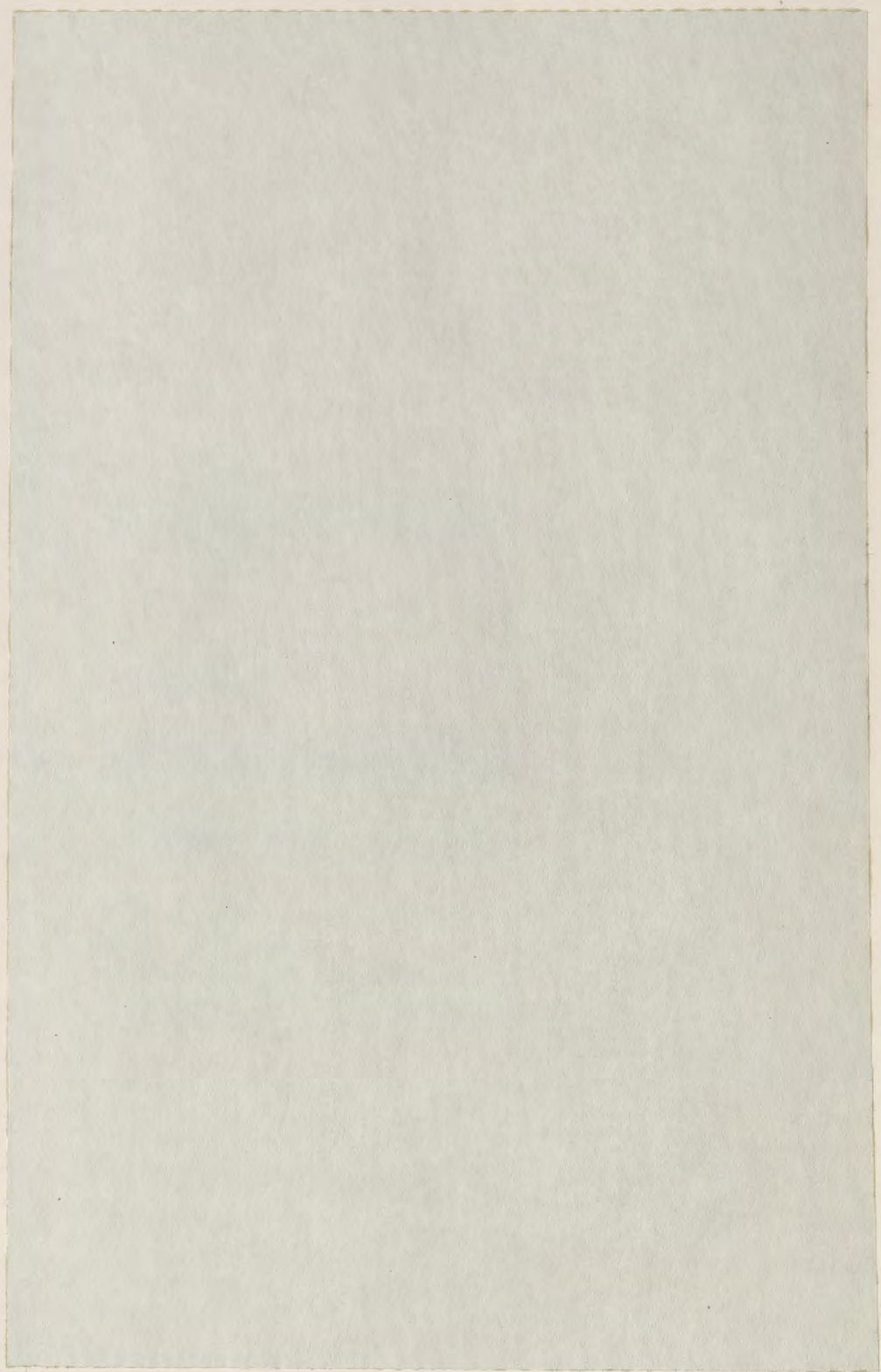
1947

The Nemacolin

1947

Dorothy Howard

c2



*The
Nineteen Hundred Forty Seven*

Nemacolin





1947

Changing Mode

Though the scenes change
And people arrive and depart
There is a quality which remains —
That impulsion of a living thing
To seek out and find another —
Another whose relationship remains
constant,
With whom the changes may be shared.
Therefore, we pause to honor
that existing characteristic,
The “rhyme and reason” of which
may not always be discerned,
Then we proceed
Knowing only that this “is as it should be.”



1902

Contents

Part One

FACULTY

They have molded with their escaping thoughts.

SENIORS

State has finished its part in arranging their designs
Their pieces fall into L-I-F-E.

UNDERCLASSMEN

These have built their designs to varying degrees—
The quality may yet be changed.

Part Two

ORGANIZATIONS

The basic outline needs supporting structure
Floating fancies must be anchored

Part Three

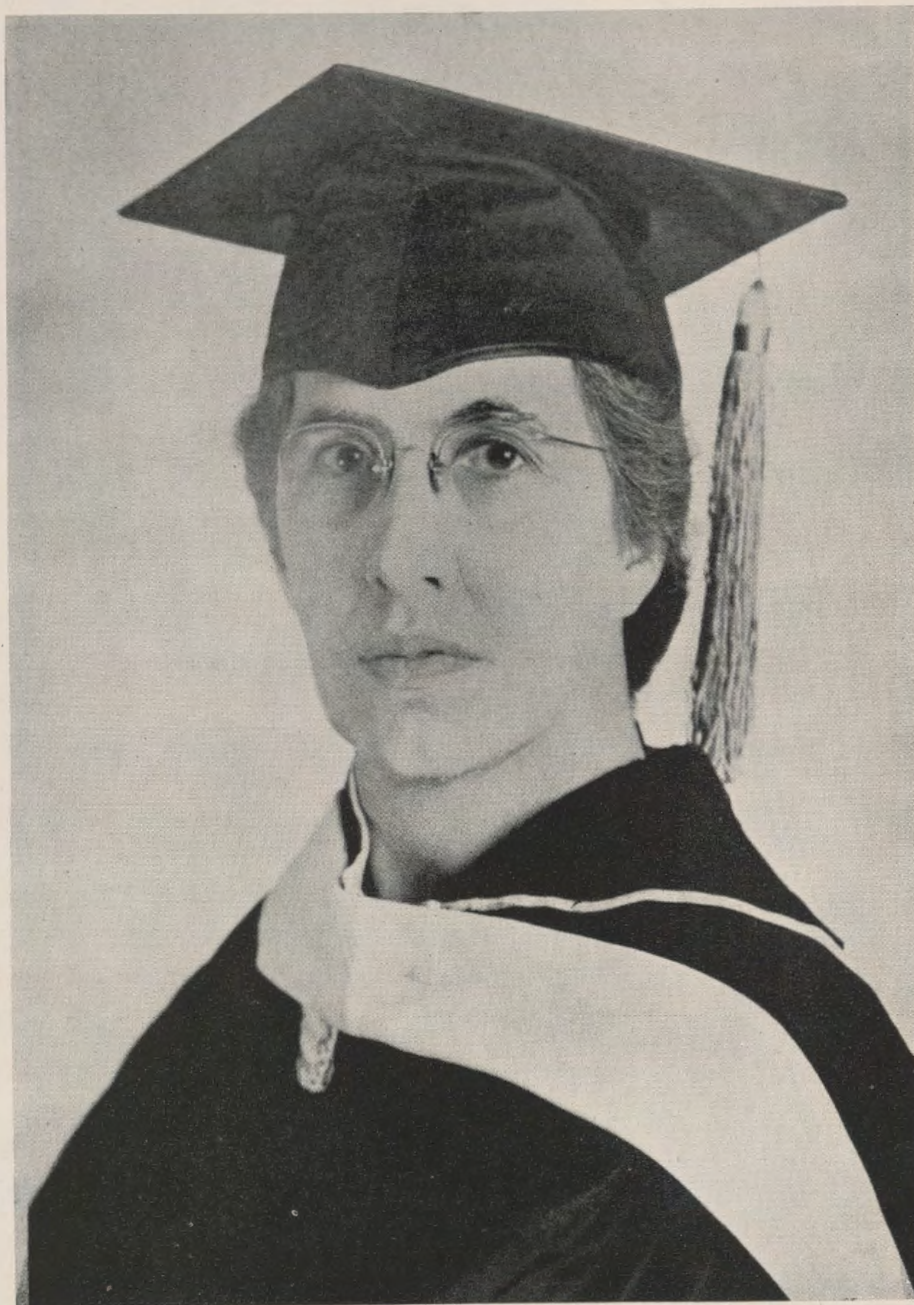
SPORTS ACTIVITIES, RECREATION

These add the color
Fill in with flair

Part Four

TRAINING SCHOOL

We help to build these patterns—
May we do so with care
And tenderness—
Yet with careful thought.



Miss Lillian C. Compton

President of State Teachers College

Frostburg, Maryland

Part One

Faculty

They have molded with their escaping thoughts

Faculty

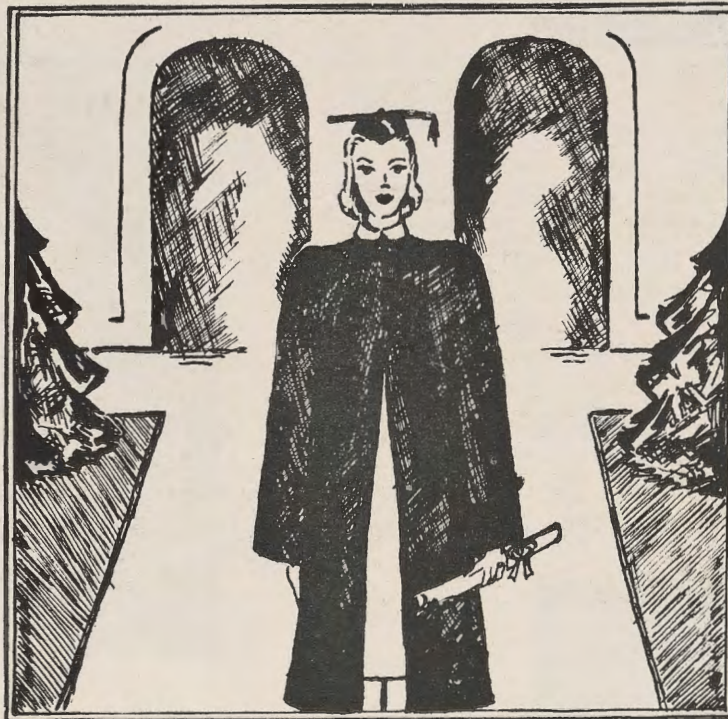


Left to right: Miss Thelma Huntley, Science; Miss R. Frances Hamilton, Second Grade Critic Teacher; Miss M. Angela Brady, Sixth Grade Critic Teacher; Mr. Leo Jason, Languages and English; Miss Irene Condry, First Grade Critic Teacher; Dr. Dorothy G. Howard, English; Miss Leviah W. Daniel, Fourth Grade Critic Teacher; Miss Ruby A. Dahlgren, Fifth Grade Critic Teacher; Dr. Carl F. Brown, Director of Student Teaching; Miss Lillian C. Compton, President; Miss Dorothy M. Shires, Principal of College Elementary School; Miss Helen Y. Hough, Librarian; Mr. Maurice Matteson, Music; Dr. Helen Taylor, Mathematics; Coach David E. Warner, Health and Physical Education; Miss Louise G. Shaffer, History; Miss Margaret C. Jones, Third Grade Critic Teacher; Mr. Ivan C. Diehl, Geography and Economics; Miss Adelaide Wall, Social Director and Dietician.

Absent from the picture: Miss Anna Comer, Assistant Librarian; Mrs. Augusta Matteson, Music; Mr. Edgar Springston, Sociology and Psychology; Mrs. Claudine Kergan, Secretary; Miss Lillian M. Wellner, Health and Physical Education; Miss Elizabeth Hitchins, Registrar; Dr. Martin E. Hamrick, Science and Chemistry.

Seniors

*State has finished its part in arranging their designs.
Their pieces fall into L-I-J-E.*



Senior Class Officers

President	-	-	-	-	Janeva Henline
Vice-President	-	-	-	-	Grace Moore
Secretary-Treasurer	-	-			Betty Mae Callis
Student Congress Representatives	-				Sarah Lee Stotler, Shirley Matthews



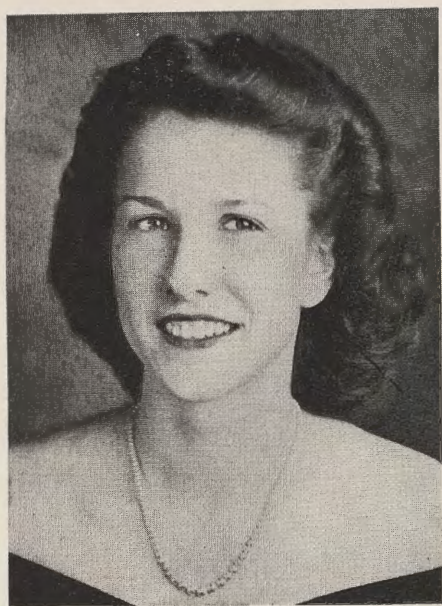
Mary Biggs, Biggsy . . . Westernport . . .
June graduate . . . attended Western Maryland
this summer . . . Christine's shadow . . . Mary-
land Singers . . . blonde . . . F. T. A. . . .
Treasurer of Day Council

Betty Welch Callis . . . Mt. Lake Park
. . . attended Western Maryland this summer
. . . Sorority . . . W. R. A. Secretary . . . Joe's
wife . . . Senior Class Treasurer . . . S. C. A.
Corresponding Secretary . . . Delegate to Jack-
son's Mill . . . Maryland Singers . . . Little
Theater . . . responsible . . . F. T. A. . . .
House Council . . . I. R. C.



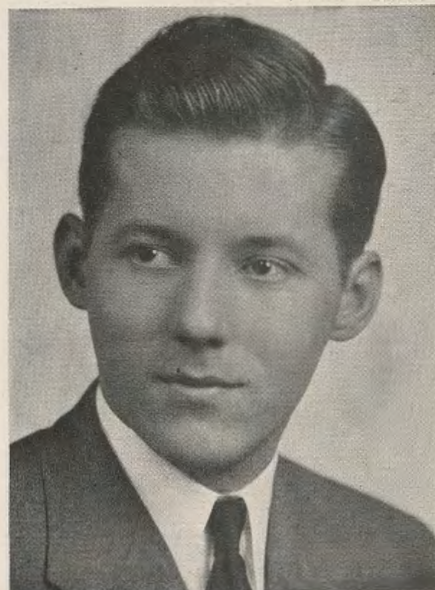
Virginia Anne Caplinger, Cappy . . .
Westernport . . . Ort's better half . . . F. T. A.
. . . S. C. A. . . . infectious giggle . . . Maryland
Singers . . . W. R. A. . . . Day Council . . . Stu-
dent Congress . . . Sophomore Class President
. . . Sorority Delta . . . Who's Who

Janeva Elizabeth Henline . . . Hancock
 . . . I. R. C. . . . ready, willing, and able . . .
 W. R. A. . . . S. C. A. . . . Treasurer and Sec-
 retary . . . F. T. A. . . . Secretary . . . Freshman
 Class Secretary . . . Junior and Senior Class
 President . . . Sorority Phi . . . Sorority Vice
 Delta . . . Sorority Delta . . . Bill's sister . . .
 Vice President of House Council . . . teaches
 in Carroll County



Mary Faye Keiser . . . La Vale . . .
 Maryland Singers . . . smooth dancer . . .
 F. T. A. . . . Badminton Champion of Junior
 Class

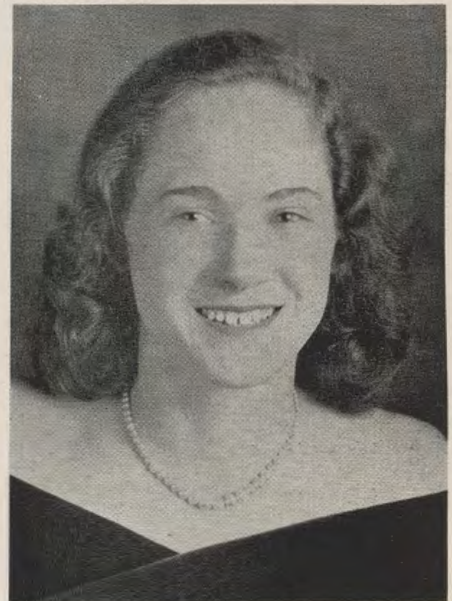
Charles Edward Lizer, Jr., Ed . . .
 Williamsport . . . Army Air Corps Lt. . . .
 Returned February 1946 . . . Who's Who . . .
 "Harry and Eddie's" . . . Student Congress . . .
 Influential speaker . . . F. T. A. . . . President
 of M. A. A. . . . House Council Vice President
 . . . Grad of 1947 . . . Chollie Eddie Honey . . .
 teaches at Middle River, Baltimore County





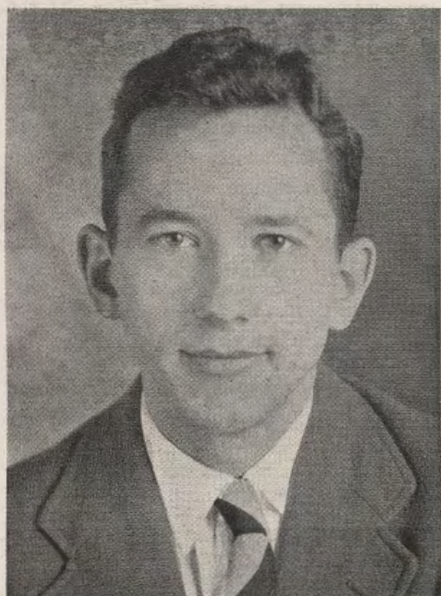
Ann Llewellyn . . . Centerville . . . Sorority Guard and Phi . . . W. R. A. Vice President . . . W. R. A. President . . . Lovely smile . . . Delegate to National Conference for W. R. A. . . . F. T. A. . . . Little Theater Secretary . . . engaged to Gene . . . Delegate to Jackson's Mill . . . Maryland Singers . . . Co-owner of Llewellyn-Matthews "Day Boarding House"

Barbara Mae Martin, Babs . . . Mt. Lake Park . . . Little Theater Secretary . . . Partial to the men . . . Maryland Singers . . . F. T. A. . . . W. R. A. . . . Sports enthusiast . . . teaches in Garrett County



Shirley Matthews . . . Corriganville . . . Sorority Omicron . . . Sorority Phi . . . F. T. A. Vice President . . . giggles . . . S. C. A. . . . Delegate to Jackson's Mill . . . Junior Class President . . . Maryland Singers . . . Ann's shadow . . . House Council . . . W. R. A. . . . teaches in Allegany County

Irene Middleton . . . Flintstone . . . Sorority . . . Student Congress . . . giggles . . . I. R. C. . . . F. T. A. . . . Maryland Singers . . . Always ready and willing . . . Delegate to Jackson's Mill . . . Attended Radford S. T. C., Va., this summer . . . S. C. A. Vice President . . . Little Theater President . . . House Council President . . . Lead in "The Damask Cheek" . . . and "Ghost of a Freshman" . . . ambitious to be a preacher's wife . . . Who's Who . . . teaches in Carroll County



William Moody, Bill . . . U. S. Navy three years . . . Returned June 1946 . . . President of Little Theater . . . Treasurer of Little Theater . . . Ort's sidekick . . . Maryland Singers . . . M. A. A.

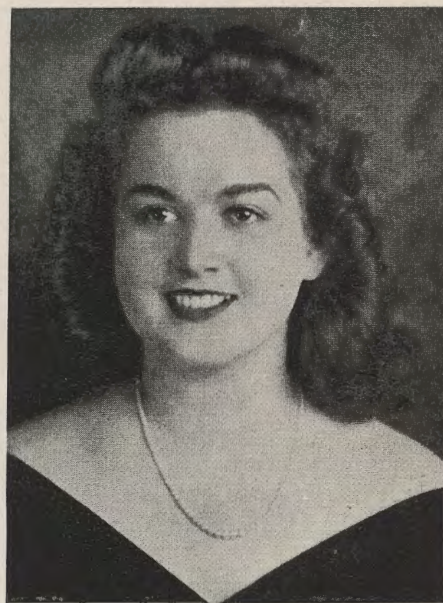
Grace Elizabeth Moore, Gracie . . . Mt. Savage . . . Maryland Singers . . . S. C. A. . . . Treasurer . . . Always ready to joke with . . . Senior Vice President





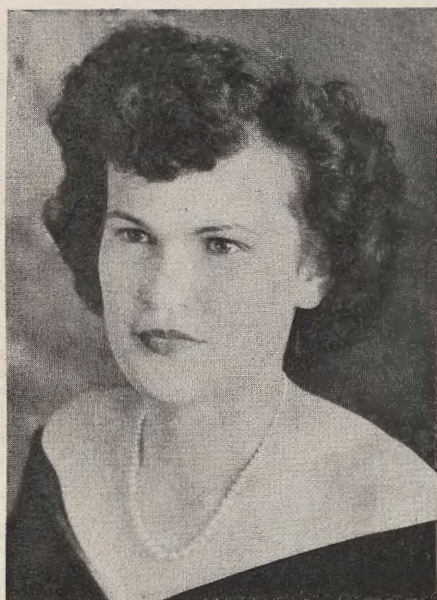
Geraldine Ort, Jerry . . . Zihlman . . .
 Sorority . . . S. C. A. . . . Mr. Diehl's "Hamilton"
 . . . F. T. A. . . . Maryland Singers . . . Secretary
 of I. R. C. . . . Panel member of China's Dilemma
 . . . Freshman Class Treasurer . . . Sophomore
 Class Vice President . . . always giggling . . .
 Student Congress President . . . Little Theater
 . . . lead in "The Damask Cheek" 1946 and "Ghost
 of a Freshman" . . . Caplinger's sidekick . . .
 Publications, Associate Editor . . . Day Council
 Treasurer and Vice President . . . State Mem-
 ber of Board of Control of Eastern States Asso-
 ciation of Professional Schools for Teachers . . .
 Who's Who . . . two trips to New York for East-
 ern States Conference . . . Leadership Award . . .
 Mr. Moody's friend . . . teaches in Manchester,
 Carroll County

Constance Phillips, Connie . . . President
 of I. R. C. . . . President of House Council . . .
 President of Social Council . . . baseball fan
 . . . Vice President of I. R. C. . . . Secretary
 of House Council . . . Sorority . . . pinochle
 enthusiast . . . Publications . . . Maryland Sing-
 ers . . . I. R. C. trip to Marywood College 1944
 . . . Panel member of China's Dilemma and
 Dumbarton Oaks



Martha Shaner . . . Cumberland . . .
 Sorority . . . always has a comeback . . . Little
 Theater . . . Publications Business Manager . . .
 Ann and Shirley's star boarder . . . W. R. A. . . .
 F. T. A. . . . Alex's sister . . . teaches in Alle-
 gany County

Sarah Lee Stotler . . . Cumberland . . .
 F. T. A. . . . W. R. A. . . . Student Congress
 . . . Wally's girl . . . Maryland Singers . . .
 Junior Class Secretary . . . pretty eyes . . .
 played in tennis and basketball tournaments
 . . . will teach in Allegany County



Darleen Warnick . . . New Germany
 . . . Attended Western Maryland this summer . . .
 Gene's girl . . . Maryland Singers . . . Little
 Theater . . . good alto . . . F. T. A. . . . Sorority
 . . . W. R. A. . . . cute giggle . . . President of
 S. C. A. . . . teaches in Garrett County

Christine Welsh . . . Westernport . . .
 Maryland Singers . . . pretty clothes . . . F. T. A.
 . . . February 1948 grad





Student Leader of 1947

Gerry Ort

The member of the Senior Class of 1947 who throughout her years at State has demonstrated the most outstanding sportsmanship, cooperation, initiative, scholarship and dependability was chosen by a central committee of faculty and students to receive the gold key to the college for Student Leadership.



Mr. Diehl, Virginia Caplinger, Irene Middleton, Gerry Ort and Miss Compton
Absent, Edward Lizer

Who's Who Among the Students in American Universities and Colleges

These four members of the Senior Class of 1947 were chosen by the faculty for possessing the qualities of character, scholarship and leadership and potential usefulness to business and society to represent Frostburg State Teachers College in 1946-47 edition of *Who's Who Among Students in American Colleges and Universities*.

Underclassmen

These have built their designs to varying degrees—

The quality may yet be changed.



Front Row (left to right)—Lois Storey, Maryjane Edwards, Betty Poffenburger, Ruth Fazenbaker, Mary Huffman

Second Row—Marian Shaw, Jean Weller, Christine Bobo, Vadne Miller, Jeanne Mehrling

Third Row—Dr. Carl F. Brown, advisor, Bill Donahue, Jane Bowen, Jeanne Lippold, Bill Henline



OFFICERS

President - Ruth Fazenbaker
 Vice-President - Christine Bobo
 Secretary - - Lois Storey
 Treasurer - - Mary Huffman
 Student Congress Representatives
 Christine Bobo,
 Betty Poffenburger
 Advisor - - - Dr. Brown

Juniors

Sophomores



First Row (left to right)—Dorothy Ebert, Ruth Robinson, Janet Pyle, Eleanor Stegmaier, Virginia Shireman, Betty Cooper, Drucilla Shriner, Christine Alderton, Martha Fratz.

Second Row—Joe Maley, Helen Kerns, Flora Cook, Leona Green, Jane Ebert, Joyce Newell, Dorcas Symons, Clara Sigler, Helen Georg, Kate McClain, Linda Lou Cain, Norma Schulte.

Third Row—Jack Stapleton, Donald Hansel, Nick Harris, James Skidmore, Alec Shaner, Frank Stone, Andy DiUbaldo, John Delbert Kelly, Don Bonig, Marshall Albright, Bill Kroll, David Jenkins, John Pfaff.

OFFICERS

President	-	Ruth Robinson
Secretary	- -	Norma Schulte

President	- -	Ruth Robinson
Secretary	- -	Janet Pyle
Treasurer	- -	Dorcas Symons
Student Congress Representatives	-	Norma Schulte, Don Hansel
Advisor	- -	Miss Wellner

Freshmen

First Row (left to right)—O'Brien Calhoun, Augustine Diaz, Bernard Loraditch, James Spitznas, Raymond Mogart, Bill Lynch, Bill Sleeman, Robert Lancaster, Harold Knippenberg, Bob Lizer, Charles Kershner.

Second Row—Mary F. Comer, Joan Smith, Belle Rice, Christine Smith, Margaret Wagner, Lois Hixon, Jeannine Moler, Barbara Bachtel, Joanne Menser, Jeanne Dressman, Libby Winner, Betty Creegan, Helen Cook.

Third Row—Jim Donahue, Elwood Layman, Elaine Miller, Phyllis Burley, Marion Bishop, Peggy Carter, Dorothea Creek, Ruth Houck, Betty Larry, Dorothea Yates, Jane Reckard, Ann Evans, Sylvia Caton, Amy Meek, Ruth Britt, Charlotte Llewellyn, Eleanor Pinault, Ann Shireman, James Taccino.

Fourth Row—Richard Soehner, Karl Poland, Eugene Flynn, Bob Rephan, Doris Crichton, Rose Stakem, Lois Flynn, Eloise Cook, Wanda Shobe, George McDonough, Paul Williams, Carl Kallmyer, Dan Bohrer.

Fifth Row—James Robeson, John Kelly, Robert Smith, George Conway, Richard Karlowa, Bruce White, John Alday, Homer Frye, Jim Long, Thomas Daugherty, Guy Walters, Eugene Harris, Paul Skidmore, Ronald Uhl, George Menser, George Wilson, Willard Morley.

OFFICERS

President - Charles Kershner
 Vice-President - - -
 - - - Joanne Menser
 Secretary - Jane Reckard
 Treasurer - Jim Robeson
 Advisor - - Mr. Warner





Kollege



Kuples

Since I met you I hardly know
Just why I lived before.
Unconsciously, perhaps, you show
Me what I'm living for.

Part Two—Organizations

The basic outline needs supporting structure

Floating Fancies must be anchored

Day Council—prior to 1920 when the Dormitory opened and a Dorm Council was founded, there was only the one governing body, The Student Congress Organization on the Campus. In 1920 the Day Council was formed.

House Council—this organization was founded in 1920, the date that the dormitory opened its doors to admit resident students.

I. R. C.—in 1939 this club was called the Current Events Club, but in 1941 it became affiliated with the Carnegie International Relations Club, sponsored by Miss Shaffer.

Little Theater—in 1926 this organization was founded and was then known as the Algonquin Club; in 1928 it became the Norsto Club of State Normal. Miss Carrie E. Ricketts was the advisor for both clubs. In 1934, this club became known as the Little Theater Club, with Miss Ricketts as advisor. Mr. Matteson took over the reins in 1938, and Mr. Leo Jason in 1946.

Maryland Singers—since 1902 there have been different Glee Clubs on the College Campus, but the Maryland Singers Group was founded by Mr. Matteson in 1937.

Publications—since 1902 there have been numerous Literary Societies on the Campus, but the first newspaper, "The Frontline" was not published until 1925. In 1935 the first yearbook, The Nemacolin, was published; in 1937, the first printed magazine, "Topper," which later became known as "The Thunderbolt," appeared, and in 1946, the first printed newspaper, "State-To-Date" took its place on the campus.

Phi Omicron Delta Sorority—this organization was founded on December 14, 1938, and had eight charter members. Mr. and Mrs. Maurice Matteson are responsible for the organization of this society.

Social Council—founded in the summer of 1946 as the result of a clause inserted in the revised edition of Student Congress constitution in 1946.

Student Christian Association—this was originated in 1922 with Miss Carrie Ricketts as advisor.

Student Congress—there has always been a governing body of students on the campus. Their charter was revised in 1930, and remained as such until 1946 when a new constitution was written, making many changes.

F. T. A.—Mr. Dunkle, former president of State Teachers College, was responsible for organizing this association in 1940. This association is a charter member of the National Education Association.



Day Council

OFFICERS

President	- -	Don Bonig
Vice-President	-	Ruth Fazenbaker
Secretary	- -	Marion Shaw
Treasurer	- -	Mary Biggs
Advisor	- -	Miss Shaffer



House Council

OFFICERS

President	-	-	Betty Poffenberger
Vice-President	-	-	Ed Hockman
Secretary	-	-	Shirley Matthews
Treasurer	-	-	Chuck Kershner
Social Chairman	-	-	Janet Pyle
Social Director	-	-	Miss Wall

OFFICERS

President - - - - Bill Henline
Vice-President - - - - John Pfaff
Secretary-Treasurer, Representative -
- - - - Norma Schulte
Advisor - - - - Miss Shaffer



I. R. C. Forum on China's Dilemma

International Relations Club





Little Theatre

OFFICERS

President	-	-	-	Irene Middleton
Secretary	-			Mary Katherine McClain
Treasurer	-	-	-	Linda Lou Cain
Advisor	-	-	-	Mr. Jason



Helen Kerns
as Penelope Sycamore



Eleanor Pinault as Essie



Norma Schulte as Rheba



Frank Stone
as Paul Sycamore



Paul Horn as Ed



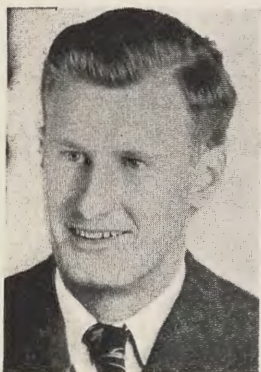
Ronald Uhl as Donald



Jack Stapleton
as Martin Vanderhol



Helen Cook as Alice



Charles Kershner
as Henderson



George McDonough
as Tony Kirby



Robert Lizer
as Boris Kalenkov



Eloise Cook
as Gay Wellington



Dorothea Yates as Mrs. Kirby

*"You Can't Take It
With You"*

By MOSS HART and GEORGE S. KAUFMAN

Little Theatre

STATE TEACHERS COLLEGE
Directed by PROF. LEO JASON



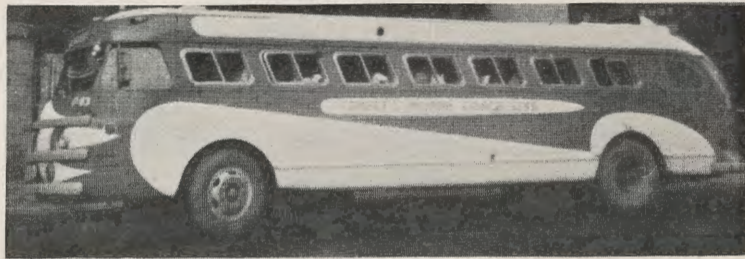
Mary Frances Comer as Olga

Maryland Folk Singers



This Year — Detroit

Next Year — New York



Maryland Singers



OFFICERS

President - William Kroll
Secretary - Joyce Newell
Treasurer - Vadne Miller
Manager - Robert Rephan
Advisor - Mr. Matteson



Publications

OFFICERS

Editor	- - -	Betty McDonough
Associate Editor	- -	Jeanne Lippold
Business Manager	- -	Flora Cook
Advisor	- - - -	Dr. Howard



Phi Omicron Delta Sorority



September Pledges

Mary Huffman
 Libby Winner
 Katie McClain

OFFICERS

Delta	-	-	-	Janeva Henline
Vice Delta	-	-	-	Lois Storey
Secretary	-	-	-	Shirley Matthews
Treasurer	-	-	-	Jeanne Lippold
Guard	-	-	-	Katie McClain
Advisors	-	-	-	Mr. and Mrs. Matteson

February Pledges

Helen Cook
 Eleanor Stegmaier
 Margaret Wagner
 Betty Larry
 Helen Kerns



Social Council

OFFICERS

President	-	-	Robert Rephan
Secretary-Treasurer	-		Norma Schulte
Advisor	-	-	Miss Dahlgren



Student Christian Association

President
 Frank Stone
 Vice-President
 Irene Middleton
 Secretary
 Joanne Menser
 Treasurer
 Grace Moore
 Program Chairman
 Norma Schulte
 Advisors
 Miss Jones
 Dr. Brown





K 2



Student Congress

President
Gerry Ort
Vice-President
George Menser
Secretary-
Treasurer
Betty Poffenberger
Advisors
Miss Compton
Miss Shaffer
Miss Wall



Future Teachers of America

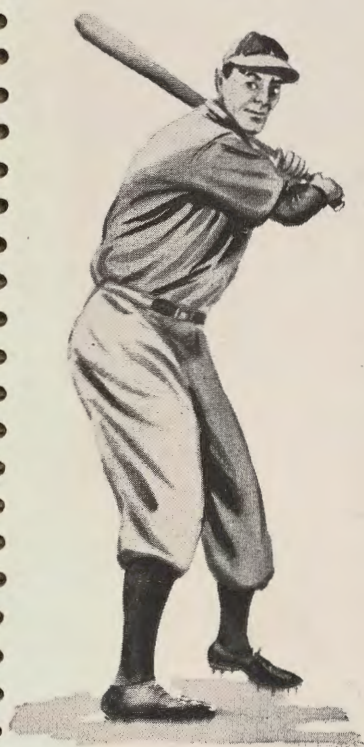


President
Vadne Miller
Vice-President
Shirley Matthews
Secretary
Mary Huffman
Treasurer
Darleen Warnick
Advisor
Miss Compton



Part Three
Sports Activities
and Recreation

These add the color
Fill in with flair





Collegiate Hops



K
A
M
P
U
S

W. R. A. Activities



OFFICERS

President - - Ann Llewellyn
Vice-President - Lois Storey
Secretary - - Betty Callis
Treasurer - Betty McDonough
Social Council Representative -
- - - Ruth Robinson

Back in the days when middy blouses and black bloomers were popular sports garb for women, our college saw the need for women's recreation. Consequently, sports for women were added to the curriculum here at State with the W. R. A. as an outgrowth for those sports-minded women. With the growth of the college, grew new ideas in W. R. A. With its expansion, W. R. A. offered more activities for the women students to engage in. The organization grew until it found itself strong enough to take its place among W. R. A.'s of other colleges and universities in the country.

Now we are striving to build an even stronger organization. Our aim is to provide opportunities for women to engage in those sports which they like best.



Delegates to the A. F. C. W. Conference, Greensboro, N. C.: Kate McClain, Lois Storey, Miss Wellner (faculty advisor), Ann Llewellyn, Eleanor Stegmaier.

These delegates were chosen by the members of W. R. A. to represent the college at the A. F. C. W. (Athletic Federation of College Women) National Convention, held at Greensboro, North Carolina. One of the main purposes of this conference was to present and to solve individual W. R. A. problems.

Class and Interclass Tournaments

Freshman Consolation



Shuffleboard: Winner—Wanda Shobe; Runner-up—Libby Winner.

Ping Pong: Winner—Jane Gattens; Runner-up—Wanda Shobe.

Badminton: Winner—Marie Copleston; Runner-up—P. Burley.

Ping Pong



Class Winners: Freshman—Doris Crichton; Sophomore—Kate McClain; Junior—Jeanne Mehrling. Runners-up: Freshman—JoAnne Menser; Sophomore—Janet Pyle; Junior—Jeanne Lippold. Inner-Class Winner: Kate McClain. Runner-up: JoAnne Menser.

Badminton Doubles



Class Winners: Juniors—R. Fazenbaker and M. Shaw; Sophomores—A. Dougherty and M. Fratz; Freshmen—D. Crichton and Libby Winner. Class Runners-up: Juniors—M. Keiser and J. Lippold; Sophomores—L. Cain and Betty McDonough; Freshmen—R. Houck and H. Cook.

Badminton Singles



Class Winners: Junior—Mary Kaiser; Sophomore—Kate McClain; Freshman—Doris Crichton.

Runners-up: Junior—Christine Bobo; Sophomore—Audrey Dougherty; Freshman—Helen Cook.

Inner-Class Winner: Doris Crichton. Runner-up: Mary F. Keiser.



**Scene from
Girls' Championship Basketball
Game won by Sophomores**

Members of Sophomore team:

Norma Schulte
Kate McClain
Flora Cook
Leona Green
Ruth Robinson
Linda Lou Cain
Betty McDonough
Virginia Shireman
Eleanor Stegmaier
Jane Ebert
Dct Ebert

Junior Class Basketball Team



Front Row: Mary F. Keiser, Ruth Fazenbaker, Lois Storey and Christine Bobo.

Back Row: Jeanne Mehrling, Vadne Miller, Jeanne Lippold and Marion Shaw.

Senior Basketball Team



Front Row: Barbara Martin, Ann Llewellyn and Shirley Matthews.

Back Row: Janeva Henline, Betty Callis and Geraldine Ort.



Freshman Basketball Team

Front Row: Doris Crichton, Wanda Shobe, Belle Rice, Joan Smith.

Back Row: JoAnne Menser, Ruth Houck, Mary Peretti, Ann Shireman, Jane Reckard.



Volleyball



Play Day Faculty



Shuffleboard



Badminton

*Scenes From
Play Day*



Champion Freshman Volleyball Team

Front Row: Ina Watson, Wanda Shobe, Dcris Crjhton, Sylvia Caton, Barbara Bachtel.

Back Row: Libby Winner, Belle Rice, Ruth Houck, Dorothea Creek.

Senior Volleyball Team

Front Row: Virginia Caplinger, Betty Callis, Jackie Bowers.

Back Row: Grace Moore, Sara Lee Stotler, Gerry Ort, Janeva Henline, Ann Llewellyn.



Junior Volleyball Team

Front Row: Lois Storey, Mary Huffman, Ruth Fazenbaker.

Back Row: Anna Cook, Christine Bobo, Marion Shaw, Jeanne Lippold, Jane Bowen.



Sophomore Volleyball Team

Front Row: Linda Lou Cain, Norma Schulte, Janet Pyle, Ruth Robinson, Kate McClain.

Back Row: Eleanor Stegmaier, Virginia Shireman, Martha Fratz, Joyce Newell.



Men's Athletic Association



OFFICERS

President	-	-	Dan Bohrer
Vice-President	-	-	William Kroll
Secretary	-	-	Don Hansel
Treasurer	-	-	Adrian Anderson
Store Manager	-	-	Gene Harris
Representative	-	-	John Pfaff
Advisor	-	-	Coach Warner

Basketball Team



First Row: Bill Kroll, Paul Byrnes, Auggie Diaz, Adrian Anderson.

Second Row: Coach Warner, Bill Lynch, Chuck Kershner, Paul Horn, Eugene Flynn, John Pfaff, Andy DiUbaldo.

M. A. A. Varsity Shop

Intercollegiate sports were revived this year at State after five years absence from the campus. Basketball and Soccer were taken in stride and, although our season did not turn out so well, Coach Warner and his boys had a good time carrying the colors far and wide.

The Basketball team toured the New England states and came back with a desire to see more of the country and the colleges which turn out our future citizens of America.

The greatest achievement of the year was the "Varsity Shop." Now in the initial stages the shop will be open next year with bigger and better values for the students of the college.



Part Four

Training School

We help to build these patterns
May we do so with care
And tenderness
Yet with heartfelt thought.



Calendar



1902

The first training school of our college was located in the Administration Building and called the Model School. It consisted of the primary grades, and there were two grades in each room. Miss Grace Dando was the principal.

1907

The Model School changed its name to the Training School and there were enough pupils to establish the full six grades.

1913

A new and enlarged building was built for the Training School. It had eight grades, fifteen pupils to each grade. Also in this new building were located the music room and gymnasium for the Normal School students.

1931

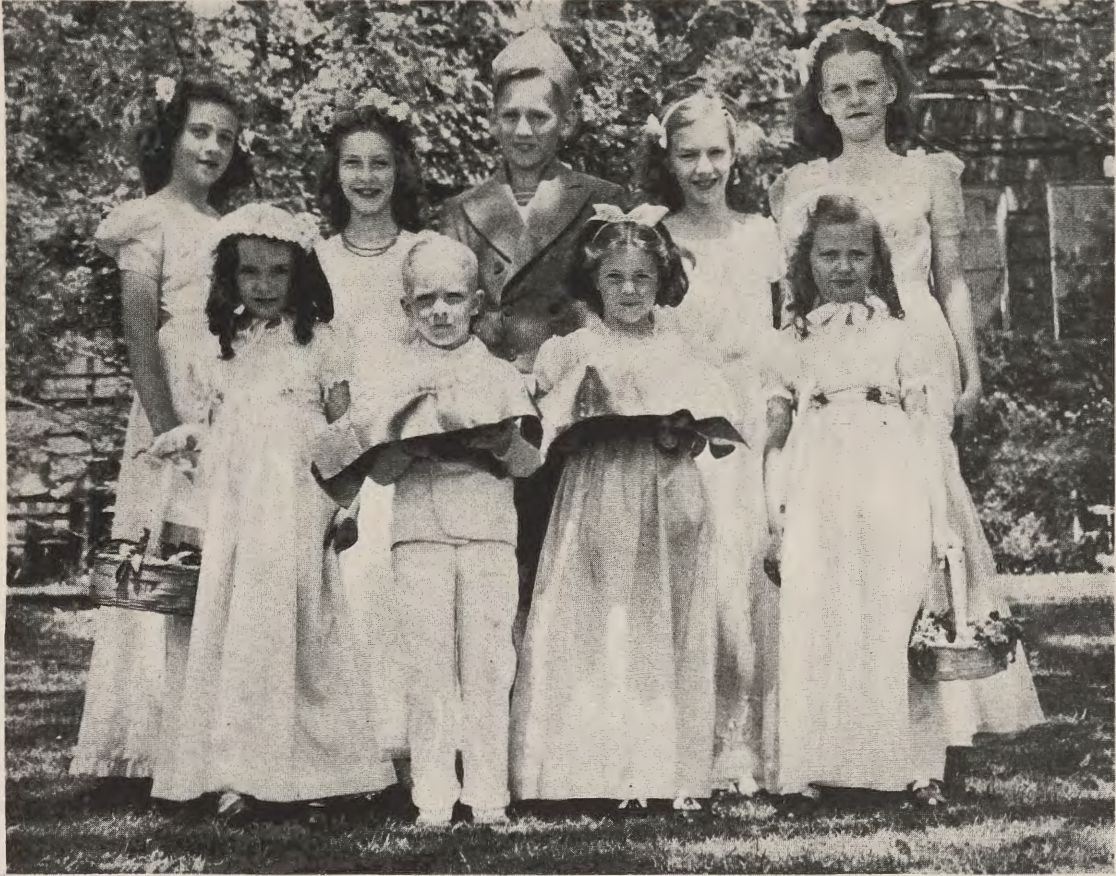
The Maryland General Assembly of 1928 appropriated money to build a modern six room school, which was erected in 1931. This constitutes the modern College Elementary School we now have.

1932

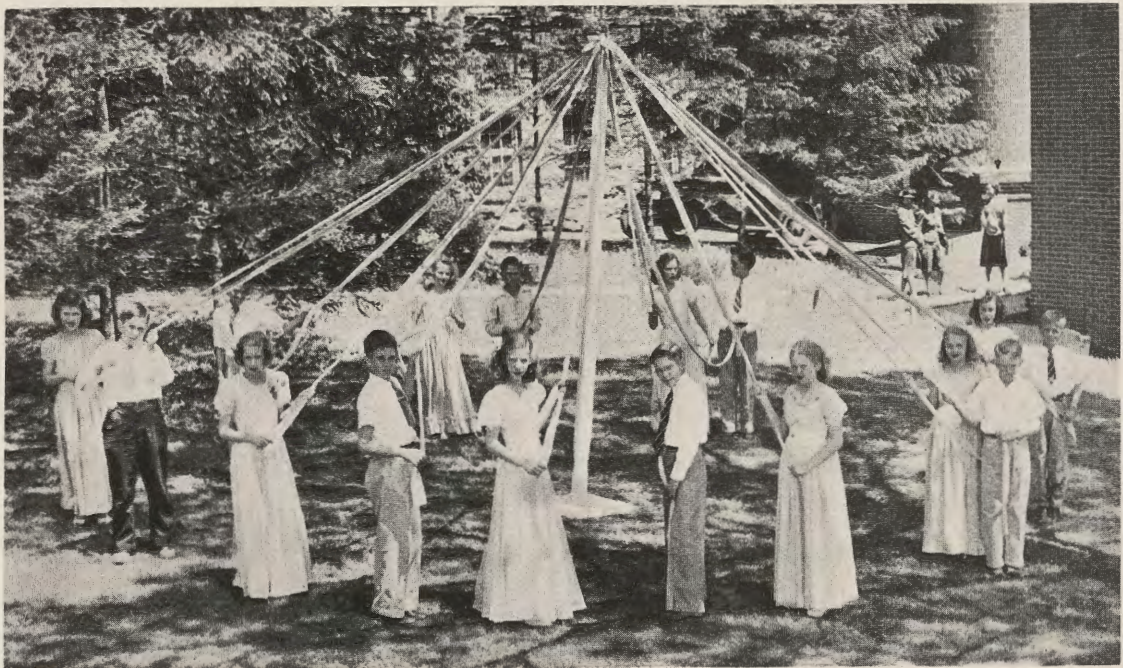
The New Training School was opened. It had six grades and a work shop, play room, library and offices for the principal and each of the six critic teachers. Mr. Newman A. Wade was the principal.



May Queen and Court



May Pole



Fairies



Circus



Bees, Butterflies, Flowers



Upper Grade Chorus



Flowers



Elves





*Culminating Activities
of Sixth Grade Social Studies Unit
on Westward Expansion*



Nemacolin Staff

Editor - - - Betty McDonough
Associate Editor - - - Jeanne Lippold
Business Manager - - - Flora Cook
Sports Editors - Bill Kroll, Paul Horn,
Kate McClain, Lois Storey
Photographers - Paul Horn, Clara Sigler

Make-Up Staff

Jack Stapleton
Bill Henline
Betty Poffenberger
Gerry Ort
Dorothea Yates
Frank Stone
Irene Middleton
Clara Sigler

Advertising Staff

Sommerville Nicholson
Mary Frances Comer
Elaine Miller
Bill Kroll
Kate McClain
Flora Cook
Dorothea Yates
Jeannine Moler

Dr. Dorothy Howard
Advisor of
Student Publications



Kollege

Baltimore

New York

Pleasant Valley
New York

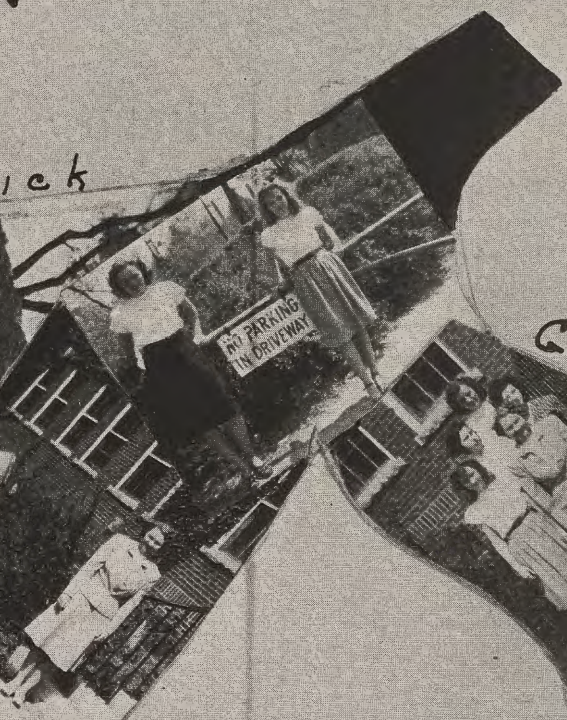
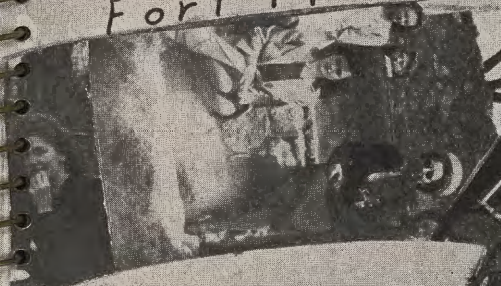
Detroit

Washington



Kruisers

Fort Fredrick



Greensboro N.C.



Canada



Annapolis



Columbus



Chicago



Growing Bigger
by
Serving Better
Frostburg
Department Store

Compliments of
Broadway
Cash Market

Use a
Parker "51" pen
and you will
never write a dull line.

G. Kear Hosken
Your Jeweler

Good Luck!

You'll hear it from all your friends
as they congratulate you on your graduation.
We wish you the same
and sincerely hope that you will strive
to make this a better world
for all future graduates.

Frostburg National Bank

"The Bank for the People"

Member
Federal Reserve System
Federal Deposit Insurance Corporation

San Toy Theatre

Lonaconing, Md.

E. V. Coyle Furniture Co.

Furniture, Rugs, Stoves

45 Baltimore Street

Cumberland

The Place To Go for the Label you Know

A well-known name in men's wear is your best guide to value. At Schwarzenbach's you'll find America's leading makes of men's fashions in a variety that makes choosing easy . . . and pleasant.

Schwarzenbach's
Cumberland

Compliments of

Green Chevrolet Co.



10 S. Water Street

Frostburg, Maryland

Compliments of
Deist Cleaners

51 E. Main Street
Phone 303

For Fun, Frolic, Food
VISIT
Gus' Restaurant

in Cumberland it's

Rosenbaum's

on Baltimore Street
for nearly a century

The TIMES and ALLEGANIAN CO.

PUBLISHERS

The Cumberland Evening Times

The Cumberland Sunday Times

The Cumberland News

**The
Cumberland
and
Westernport
Transit
Company**

You'll enjoy dining

at the

Tally-Ho

Hafer

*Furniture
and Funeral Director*

Phone 76

Thomas Elias

Tailor - Cleaner

10 W. Main St. Frostburg, Md.

***First
you're a guest . . .
then a customer***

Compliments of
**Palace and Lyric
Theatres**

Lazarus

Cumberland

Meet the Gang at

Johnny's Place

Lonaconing

GENTLEMEN'S
APPAREL

BLANK'S
Texaco Service Station

AUTO ACCESSORIES
TIRES — BATTERIES

ZENITH
Floor and Table Model Radios

Phone 3401
Mt. Savage, Md.

The Manhattan

67 Baltimore Street Cumberland



A Reputation
BUILT BY YEARS OF
FAITHFUL SERVICE

A bank's reputation cannot be built overnight. It has to grow. It must be seasoned and certified by sound management exercised over many years.

We're not boastful of our reputation. But we are frankly proud of it. We feel that it is something that we must live up to.

THE FIDELITY SAVINGS BANK

"The Bank With the Town Clock"

FROSTBURG

Member F. D. I. C.

MARYLAND



Compliments of
Jeffries Brothers

Frostburg, Md.

G. C. Murphy Co.

Frostburg, Md.

M. Eichhorn
Furniture
Funeral Director

Lonaconing, Md.

**Ford's Drug Stores,
Inc.**

The Rexall Store

Frostburg, Md.

Printed by
HERALD PRINTING HOUSE
Piedmont, W. Va.

FROSTBURG STATE UNIVERSITY



3 2060 00195220 5

