

A dark background featuring a faint, stylized musical score with notes and staves.

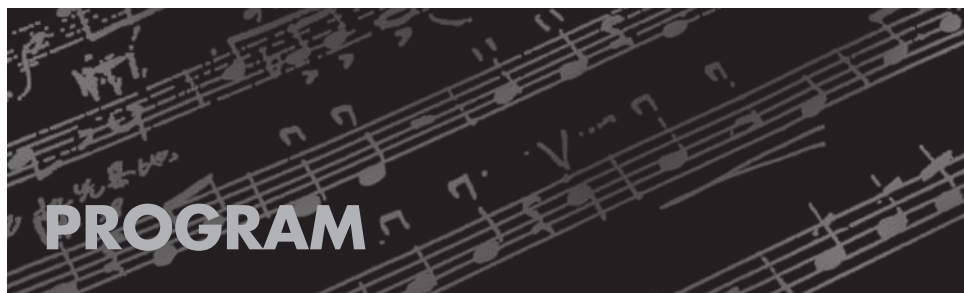
Department of
Music, Theatre
and Dance
Fulton School of Liberal Arts

SU FACULTY & ALUMNI RECITAL

Saturday, October 1, 2016
Holloway Hall, Great Hall
7:30 p.m.

Sponsored by the Department of
Music, Theatre and Dance

Salisbury
UNIVERSITY
www.salisbury.edu



PROGRAM

From *An Elizabethan Songbook*Eric Ewazen (b. 1954)

I. Come Away, Come Sweet Love

II. There Is A Lady, Sweet and Kind

Tom Davis, trumpet; Lee Knier, trombone; William Folger, piano

Danse Macabre, Op. 40Camille Saint-Saëns (1835-1921)

Linda Cockey, primo; Louise Anderson, secondo

Duet for Two Cellos in G MajorFriedrich August Kummer (1797-1879)

Jeffrey Schoyen, cello; Madeleine Clifton, cello

Bachianas Brasileiras No. 5, Aria (Cantilena)Heitor Villa-Lobos (1887-1959)

Caitlyn Howard, soprano; Danielle Cumming, guitar

Shadow of the Blues John Musto (b. 1954)

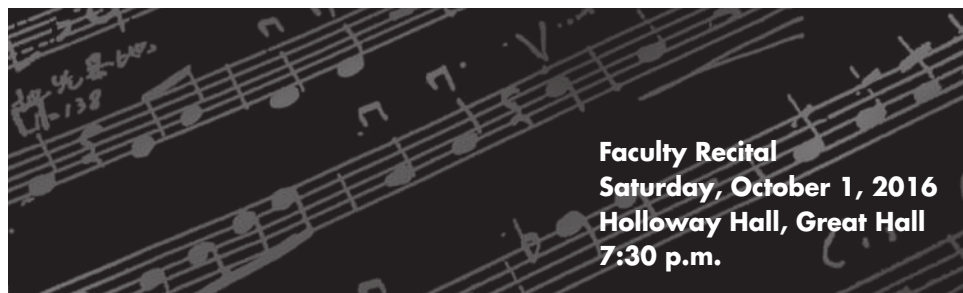
Silhouette

Litany

Island

Could Be

John Wesley Wright, tenor; Amy Morgan, piano



Faculty Recital
Saturday, October 1, 2016
Holloway Hall, Great Hall
7:30 p.m.

Stars Ricky Ian Gordon (b. 1956)
Luck
Port Town

Caitlyn Howard, soprano; Amy Morgan, piano

Wood, Metal, Skin Josh Gottry (b. 1974)
Eric Shuster, Meghan Rollyson and Thomas Simpson, percussionists

Amazing Grace English Hymn (1779)
The Water is Wide Scottish Folk Song (1600)
Linda Cockey, primo; Louise Anderson, secondo

Hurry, It's Lovely up Here! from *On a Clear Day You Can See Forever* Lerner and Lane
Meredith Jones, soprano; Amy Morgan, piano

When the Children are Asleep from *Carousel* Richard Rodgers and
Oscar Hammerstein II
Meredith Jones, soprano; John Wesley Wright, tenor; Amy Morgan, piano



Alumni

Madeleine Clifton, 2014, is working as a string specialist for Cecil County Schools where she directs elementary, middle and high school orchestras. She also is playing cello in the Susquehanna Symphony Orchestra and free-lancing in Baltimore County.

Tom Davis, 2016 began his studies at Peabody Academy. After life events interrupted those plans, he joined the Maryland State Police Force, got married and raised a family. He began finishing his music degree at Salisbury University in 2012 while still working full time out of the Salisbury State Police Barracks.

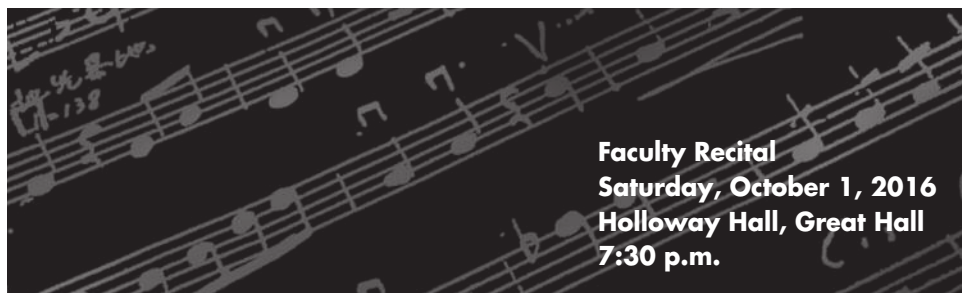
Caitlyn Howard Crowley, soprano, is a native of Salisbury, MD. She attended Salisbury University from 2009 to 2013, graduating with a music degree in vocal performance and music education, studying with Dr. John Wesley Wright. She recently finished her master's degree in vocal performance with a Vocal Pedagogy Certificate at the University of Kentucky, where she studied with Dr. Angelique Clay. Currently, Caitlyn is teaching choir at Bennett Middle School.

Meredith Jones graduated from Salisbury University in May 2015. While there, she studied voice under Dr. John Wesley Wright and participated in many ensembles, including Salisbury and University Chorale, Opera Workshop, and Chamber Choir. Since graduating, she has expanded her private studio of voice and piano students and began studying music therapy at St. Mary of the Wood's College in Terre Haute, IN.

Amy Morgan, 2010, is director of music at Trinity Cathedral in Easton, MD. Since graduating from SU, she has served as a church music director, organist, music director of the Wye Operetta Workshop and private teacher. Morgan is currently a graduate student at Messiah College, a wife and mother of two children.

Meghan Rollyson graduated from Salisbury University in 2015 with a B.A. in music education. She is currently in her second year of teaching general music at Delmar Elementary School in Wicomico County.

Thomas Simpson graduated from Salisbury University in 2013 with a B.A. in music. He is currently working toward a second bachelor's degree in geographic information science at SU.



Faculty

Lee Knier, M.M. is lecturer of music at Salisbury University where he directs the Salisbury Pops Band and teaches brass applied lessons. Knier joined the SU faculty in 2004.

William Folger, D.M.A. is professor of music and co-chair of the Department of Music, Theatre and Dance at Salisbury University. He is also director of choral activities and artistic director of the Salisbury Chorale. Folger joined the SU faculty in 2003.

Linda Cockey, D.M.A. is professor of music at Salisbury University where she teaches applied piano, music history and wellness in performance. Cockey joined the SU faculty in 1980.

Louise L. Anderson, Ph.D. is assistant professor of music and coordinator for music education at Salisbury University. Anderson joined the SU faculty in 2014.

Jeffrey Schoyen, D.M.A. is an associate professor of music and artistic director of the Salisbury Symphony Orchestra. Schoyen joined the SU faculty in 2005.

Danielle Cumming, D.M. is associate professor of music, coordinator for the guitar area and annual SU Guitar Festival Artistic Director. Cumming joined the SU faculty in 2007.

John Wesley Wright, D.M.A. is associate professor and coordinator for the voice area and Opera Theatre Ensemble artistic director. Wright joined the SU Faculty in 2006.

Eric Shuster, M.M. is instructor of percussion and Percussion Ensemble director. Shuster joined the SU faculty in 2011.

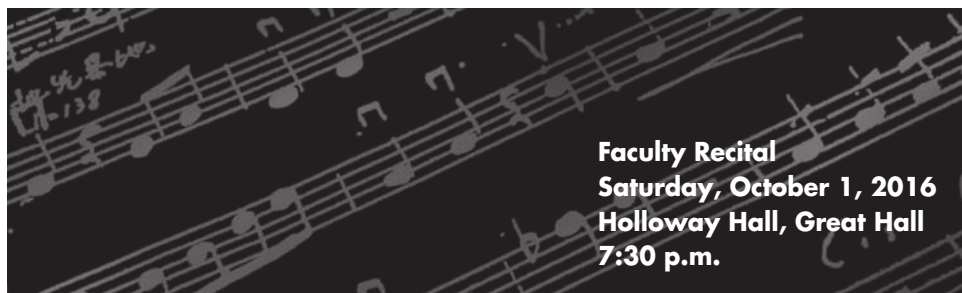


Thank you for attending our performance. The audience plays an integral part in the success of our program. As an involved audience member, please take a few minutes to read this friendly reminder on concert etiquette.

A Few Helpful Reminders of How to Be an Involved Audience Member

- Please arrive early to ensure that you will have a seat.
- Please turn off your cell phone instead of just silencing it so you will not be tempted to text during the performance. Untimely cell phone interruptions during a performance disrupt the performers and the other audience members, please be mindful of others.
- Please remain in your seat during the performance. If you must leave the concert hall, please wait until intermission. If it is an emergency, please try to leave during the applause.
- Please respect the performers by staying seated for the entire performance.
- As an involved audience member, it is polite to clap at the entrance of the performers.
- It is polite to save quiet whispering or talking, if necessary, between songs, as opposed to during a performance.

Ideas adapted from Concert Etiquette Tips from MENC's Teacher Success Kit.



Faculty Recital
Saturday, October 1, 2016
Holloway Hall, Great Hall
7:30 p.m.

MUSIC, THEATRE AND DANCE DEPARTMENT UPCOMING EVENTS FOR OCTOBER 2016

For a full listing of upcoming events or to join our mailing list, please visit
www.salisbury.edu/performingarts

Bobbi Biron Theatre Program: The Country Wife

Directed by Dr. T. Paul Pfeiffer

October 6-9* & 13-16*

8 p.m. & 2 p.m.*

Black Box Theatre

Musical Theatre Ensemble: I Love You, You're Perfect, Now Change

Directed by Darrell Mullins

October 20-23*

8 p.m. & 2 p.m.*

Guerrieri Academic Commons, Assembly Hall

Salisbury Symphony Orchestra: Out of Africa

Featuring Nathan Buckner, Piano

October 22

7:30 p.m.

Holloway Hall Auditorium

SSO tickets www.salisburysymphonyorchestra.org

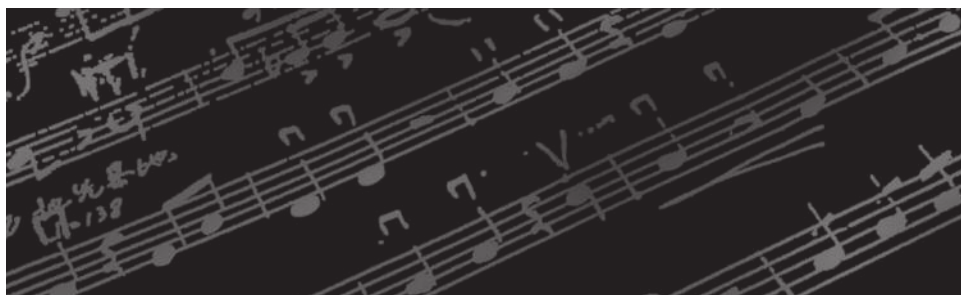
BOX OFFICE

Online Ticket Sales www.salisbury.edu/performingarts

Reservations and Credit Card Sales 410-543-6228

Window Sales Fulton Hall 100, Monday-Friday, 10 a.m.-4 p.m.

Visa, MasterCard, Cash, and Checks made payable to *Salisbury University*



ACKNOWLEDGEMENTS

Dr. Janet Dudley-Eshbach, *President*

Dr. Diane D. Allen, *Provost & Senior Vice President of Academic Affairs*

Mrs. Martha N. Fulton & the late Charles R. Fulton

Dr. Maarten Pereboom, *Dean, Fulton School of Liberal Arts*

Dr. William M. Folger, *Co-Chair, Department of Music, Theatre and Dance*

Robert Smith, *Co-Chair, Department of Music, Theatre and Dance*

Sally Choquette, *Administrative Assistant II, Department of Music, Theatre and Dance*

Brooke Church, *Administrative Assistant II, Department of Music, Theatre and Dance*

If you would like to make a donation to support other performances like this one, please make your check payable to the Performing Arts Fund, specifying the organization in the memo line and mail in care of the Salisbury University Foundation, Inc. at P.O. Box 2655, Salisbury MD 21802.

Please call 410-543-6385 for information regarding upcoming Department of Music, Theatre and Dance performances.

For more information about our academic program, please visit us at www.salisbury.edu/performingarts.

Department of Music, Theatre and Dance Fulton School of Liberal Arts

Salisbury University

1101 Camden Avenue, Salisbury, MD 21801

Phone: 410-543-6385

Fax: 410-548-3002

Email: wmfolger@salisbury.edu

Salisbury
UNIVERSITY
www.salisbury.edu