



# Shoreline

Vol. 19 • January 2012

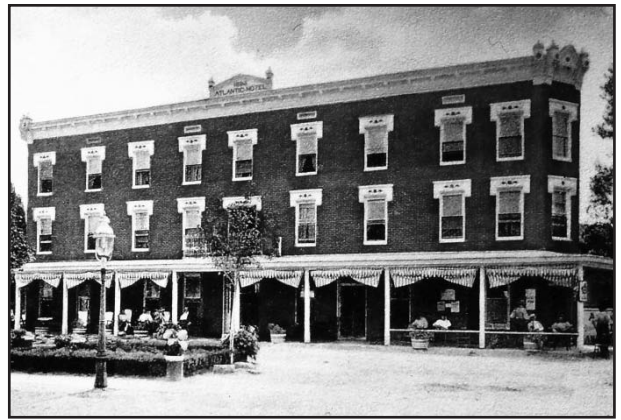
For the Members of the Edward H. Nabb Research Center for Delmarva History and Culture at Salisbury University



# Shoreline

## Contents...

- 4 . . . . . *Captain Allison Parsons,  
Secessionist at Pemberton Hall*
- 8 . . . . . *A Child's-Eye View of Main Street, Berlin, Maryland  
Circa 1943-1953*
- 12 . . . . . *Christmas Through the Years*
- 14 . . . . . *Building a Church on Delmarva*
- 17 . . . . . *The Fight for Methodism: Asbury's Little War*
- 18 . . . . . *The 1886 Fire of Salisbury*
- 20 . . . . . *At the Hands of Persons Unknown:  
The Lynching of Matthew Williams*
- 22 . . . . . *Mardela Springs – Main Street at the Mid-Century*
- 24 . . . . . *The Classics and their Survival on  
17th Century Virginia's Eastern Shore*
- 25 . . . . . *Ye Bare and Ye Cubbe*
- 26 . . . . . *The Maryland Dove*
- 28 . . . . . *African-American Businesses in Salisbury*
- 29 . . . . . *Celebrating Our Heritage*
- 30 . . . . . *Volunteer Corner*
- 31 . . . . . *Donors and Members*



A Child's-Eye View of Main Street, Berlin,  
Maryland, Circa 1943-1953

8



Mardela Springs – Main  
Street at the Mid-Century

22



The 1886 Fire of Salisbury

18

## Volume 19 • January 2012

*Director and Founder*, Dr. G. Ray Thompson. *Outreach Coordinator*, Damika Baker. *Archivist*, David Ranzan. *Research Assistant*, T. Aaron Horner. *Office Manager*, Donna T. Messick. *Receptionist*, Denise Horner & Pilar Burton. *Archival Assistant*, Julie Messick. *Graduate Assistant*, Charles Overholt & Nikole Delosier.

This issue and back issues of *Shoreline* may be purchased for \$15 each. Please contact us at 410-543-6312 or by e-mail at [rcdhac@salisbury.edu](mailto:rcdhac@salisbury.edu) for details. ©2012 Edward H. Nabb Research Center for Delmarva History and Culture at Salisbury University. All rights reserved. Reproduction in whole or in part without permission is prohibited. Any views or opinions expressed in this newsletter are solely those of the individual authors and do not represent those of the Nabb Center or Salisbury University. *Shoreline* is published by the Nabb Research Center, 1101 Camden Ave., Salisbury University, MD, 21801. Printed in the USA by the Publications Office, Salisbury University, Salisbury, MD.

### About the Front Cover:

The cover images of the *Maryland Dove* and its crew members taken in September 2011 during the time the reconstructed 17th-century vessel was docked in Salisbury.