

The Musical Theatre Ensemble of the Department of Music, Theatre and Dance  
Presents

# THE 25TH ANNUAL PUTNAM COUNTY SPELLING BEE



Music and Lyrics by William Finn  
Book by Rachel Sheinkin  
Conceived by Rebecca Feldman  
Additional Material by Jay Reiss

Darrell Mullins, Director  
William M. Folger, Musical Director  
Katie Nuttall, Choreographer  
Thomas Anderson, Technical Director  
John Raley, Lighting/Sound Director

**Salisbury**  
UNIVERSITY  
[www.salisbury.edu](http://www.salisbury.edu)

December 10-13\*, 2015  
Fulton Hall Black Box Theatre • 8 p.m. & \*2 p.m.

For more information visit [www.salisbury.edu/theatreanddance](http://www.salisbury.edu/theatreanddance)

# PROGRAM

The Musical Theatre Ensemble of the Department of Music, Theatre and Dance Presents

## THE 25TH ANNUAL PUTNAM COUNTY SPELLING BEE



### CAST

*(In order of appearance)*

*Rona Lisa Peretti/Olive's Fantasy Mom*

*Chip Tolentino/Jesus*

*Logainne Schwartzandgrubbeniere*

*Leaf Coneybear/Carl Dad*

*William Barfee*

*Marcy Park*

*Olive Ovstrosky*

*Douglas Panch*

*Mitch Mahoney/Dan Dad/Olive's Fantasy Dad*

*Maggie Jones*

*Daniel Bishop*

*Desiree Borges*

*Calvin Collins*

*John Wixted*

*Rebekkah Anderson*

*Kimberly Garcia-Torres*

*Cornelius Fletcher*

*Syed Jaffrey*

### ORCHESTRA

*Aimee Faulkner and Susan Zimmer*

*William M. Folger*

*Brian Perez*

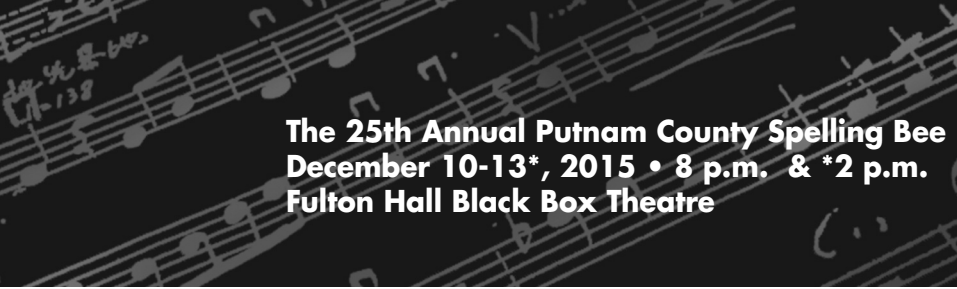
*Marc Fernandez*

*Keyboard*

*Keyboard*

*Woodwinds*

*Percussion*



**The 25th Annual Putnam County Spelling Bee**  
**December 10-13\*, 2015 • 8 p.m. & \*2 p.m.**  
**Fulton Hall Black Box Theatre**

## **PRODUCTION STAFF**

Director	Darrell Mullins
Musical Director	William Folger
Production Manager	Mary-Tyler Upshaw
Choreographer	Katie Nuttall
Costume Coordinator	Niamani Robinson
Stage Manager	Dallas Jordan
Assistant Stage Manger	Claire Thomas
Technical Director	Thomas Anderson
Lighting & Sound Director	John Raley
Assistant Lighting Designer	Madeline Stiso
Sound Engineer	Amanda Bysheim
Sound Engineer	Caitlin Wright
Sound Effects Operator	Callie Hentz, Alli Payne
Light Board Operator	Kimmie Brown
ASM (backstage), in charge of mics	Meredith Ditto
Dresser	Paige Brown
Stage Crew	Morris Lewis
Stage Crew	Marissa Meehan
House Manager	Becca Thomas
Box Office Assistants	Quincy Jennings and Shanique Poole
Rehearsal Accompanists:	Susan Zimmer, William Folger, Aimee Faulkner

*Based upon C-R-E-P-U-S-C-U-L-E, an original play by The Farm.*

*The Barrington Stage Company workshop of THE 25TH ANNUAL PUTNAM COUNTY SPELLING BEE was originally co-directed by Michael Barakiva and Rebecca Feldman.*

The 25th Annual Putnam County Spelling Bee is presented through special arrangement with Music Theatre International (MTI). All authorized performance materials are also supplied by MTI. 421 West 54th Street, New York, NY 10019 Phone: 212-541-4684 Fax: 212-397-4684 [www.MTIShows.com](http://www.MTIShows.com) - See more at:  
[http://www.mtishows.com/show\\_detail.asp?showid=000336#sthash.JS2QOaf6.dpuf](http://www.mtishows.com/show_detail.asp?showid=000336#sthash.JS2QOaf6.dpuf)



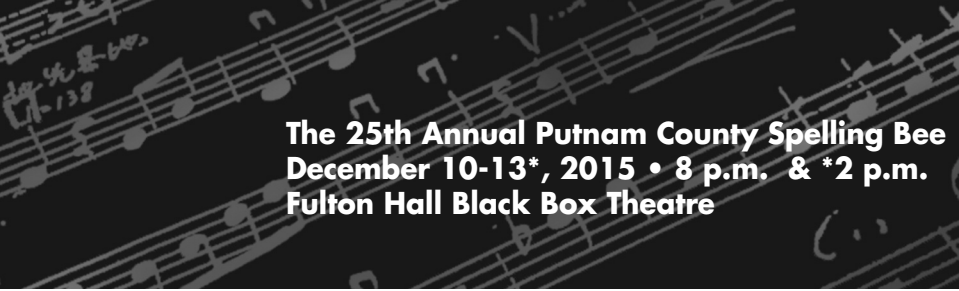
## MUSICAL NUMBERS

### Act 1

The 25th Annual Putnam County Spelling Bee	Ensemble
The Rules	Doug Panch and Ensemble
My Friend the Dictionary	Olive and Ensemble
Pandemonium	Ensemble
I'm Not That Smart	Coneybear
Magic Foot	Barfee and Ensemble
Pandemonium (Reprise)	Ensemble
Prayer of the Comfort Counselor	Mitch and Ensemble

### Act 2

Chip's Lament	Chip
Woe is Me	Schwarzzy and Ensemble
Spelling Montage	Spellers, Doug Panch
I'm Not That Smart (Reprise)	Coneybear
I Speak Six Languages	Marcy and Ensemble
The I Love You Song	Olive, Olive's Fantasy Mom, Olive's Fantasy Dad
Woe is Me (Reprise)	Schwarzzy and Mitch
Second	Olive, Barfee and Company
The Champion	Ensemble
Finale	Ensemble

The background of the top section is a dark, grayscale image of a musical score with various notes and clefs.

**The 25th Annual Putnam County Spelling Bee  
December 10-13\*, 2015 • 8 p.m. & \*2 p.m.  
Fulton Hall Black Box Theatre**

## **ABOUT THE FARM**

The Farm was founded in 2000 by Rebecca Feldman, artistic director. It is a collective of writers and performers, including Jay Reiss, Dan Fogler and Sarah Saltzberg. The Farm's interest is in the role of improvisation in creating new work for the theatre. The Farm initially designates a two-week intensive period in which to discover, develop and rehearse a play from the impulses borne mainly out of the pressure of a deadline. Previous projects include "Super" (at Atlantic Theatre Studios), "Why I Hate Florida" (workshop at White Wave in DUMBO) and "C-R-E-P-U-S-C-U-L-E" (at the Present Company Theatorium in October 2002), on which The 25th Annual Putnam County Spelling Bee is based. The character and original dialog of "Beth Marguiles," "Vice President Douglas Panch," "Mr. Barfee" and "Logan Schwarzengrubenierre" were created by Rebecca Feldman, Jay Reiss, Dan Fogler and Sarah Saltzberg, respectively.

See more at:

[http://www.mtishows.com/show\\_detail.asp?showid=000336#sthash.JS2QOaf6.dpuf](http://www.mtishows.com/show_detail.asp?showid=000336#sthash.JS2QOaf6.dpuf)



# PROGRAM

## ACKNOWLEDGEMENTS

Dr. Janet Dudley-Eshbach, President  
Dr. Diane D. Allen, Provost & Senior Vice President of Academic Affairs  
Mrs. Martha N. Fulton & the late Charles R. Fulton  
Dr. Maarten Pereboom, Dean, Fulton School of Liberal Arts  
Dr. William Folger, Co-Chair, Department of Music, Theatre and Dance  
Dr. T. Paul Pfeiffer, Co-Chair, Department of Music, Theatre and Dance  
Sally Choquette, Administrative Assistant II/Box Office Manager,  
Bobbi Biron Theatre Program  
Brooke Church, Administrative Assistant II, Department of Music, Theatre and Dance  
Professor Tom Anderson, Technical Director, Bobbi Biron Theatre Program  
Professor Leslie Yarmo, Costume Designer, Bobbi Biron Theatre Program  
Professor John Raley, Scene Designer, Bobbi Biron Theatre Program  
Matt Hill, Salisbury University Event Services  
Mrs. Michael Carlton-Jones  
St. Francis De Sales School

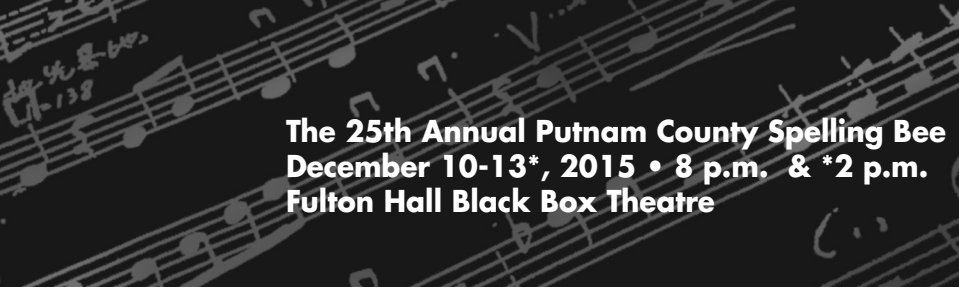
**We extend appreciation to the following for their generous support in making theatre and dance in our Lower Shore community possible (based on most recent information available).**

## SEASON SUBSCRIBERS

Arnold B. Ajello  
Bonnie Barridge  
Jane F. Beardsley  
Andrew and Marilyn Booth  
David and Susanna Buchanan  
Charles Cole  
Timothy and Mary Connolly  
Lynne Connor  
Fredericks Danielus  
Heather Dreisbach  
Janet Dudley-Eshbach and Joseph Eshbach  
Ronald and Kristine Fullerton  
Karen and Tony Gianninoto

Frederick and Shirley Herrmann  
Edgar Isaacs  
Lewis and Adrienne Kadushin  
Rodney and Patricia Layton Jr.  
Jack Levering  
Lynn Lynch  
Ernest and Elizabeth Matthews  
Kelsie J. Mattox  
Rory O'Rourke  
Ed and Donna Prager  
Bryan and Bethany M. Pagner  
Aaron Pulhamus  
Mary-Margaret Reichert

Sallie Ridgway  
Sylvia Robertson  
Nancy Roisum  
George and Nancy Rubenson  
Henry and Mary Louisa Rutledge  
Marie Shea  
David and Stephanie Shultz  
William and Mary Slot  
Richard and Ann Smith  
Richard and Lee Townshend  
Ronald and Susan Wilkins  
Elizabeth Wootten  
Edward Wright



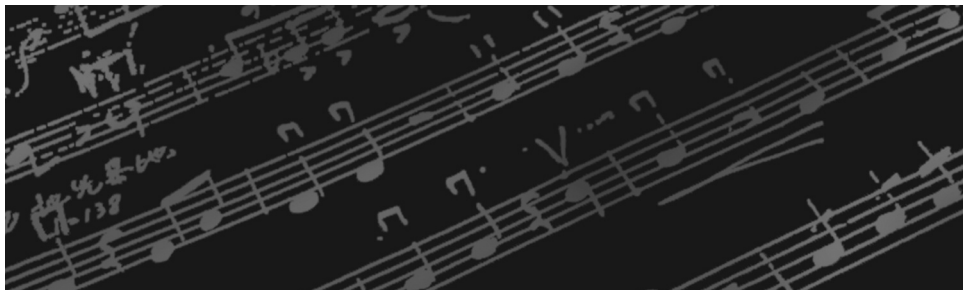
**The 25th Annual Putnam County Spelling Bee**  
**December 10-13\*, 2015 • 8 p.m. & \*2 p.m.**  
**Fulton Hall Black Box Theatre**

Thank you for attending our performance. The audience plays an integral part in the success of our program. As an involved audience member, please take a few minutes to read this friendly reminder on concert etiquette.

## **A Few Helpful Reminders of How to Be an Involved Audience Member**

- Please arrive early to ensure that you will have a seat.
- Please turn off your cell phone instead of just silencing it so you will not be tempted to text during the performance. Untimely cell phone interruptions during a performance disrupt the performers and the other audience members, please be mindful of others.
- Please remain in your seat during the performance. If you must leave the concert hall, please wait until intermission. If it is an emergency, please try to leave during the applause.
- Please respect the performers by staying seated for the entire performance.
- As an involved audience member, it is polite to clap at the entrance of the performers.
- It is polite to save quiet whispering or talking, if necessary, between songs, as opposed to during a performance.

*Ideas adapted from Concert Etiquette Tips from MENC's Teacher Success Kit.*



## **Department of Music, Theatre and Dance, Fulton School of Liberal Arts**

Salisbury University

1101 Camden Avenue, Salisbury, MD 21801

Phone: 410-543-6385

Fax: 410-548-3002

E-mail: [wmfolger@salisbury.edu](mailto:wmfolger@salisbury.edu)

If you would like to make a donation to support other performances like this one, please make your check payable to the Performing Arts Fund, specifying the organization in the memo line and mail in care of the Salisbury University Foundation, Inc. at P.O. Box 2655, Salisbury MD 21802.

Please call 410-543-6385 for information regarding upcoming Department of Music, Theatre and Dance performances.

For more information about our academic program, please visit us on the Web at [www.salisbury.edu/performingarts](http://www.salisbury.edu/performingarts).



**WSCL 89.5** Fine Arts & Culture

**WSDL 90.7** Rhythm & News