

# Shoreline

Vol. 14, No. 6 • June 2007

For the Members of the Edward H. Nabb Research Center for Delmarva History and Culture at Salisbury University

## *A Bridge to the Past: From Jamestown to Delmarva*



# Shoreline

## Contents...

- 4 . . . . Nabb News
- 5 . . . . Entertainment for Soldiers During World War II
- 8 . . . . Miles Stevenson Prize – Winning Essays
- 10 . . . Focus on Student Research: General W.W. Woodcock
- 11 . . . Disappearing Delmarva: Delmarva Landmark Destroyed
- 16 . . . Save the Dates!
- 25 . . . Spotlight on Collections: The Littleton Long House
- 31 . . . Book Review: *Pocahontas, Powhatan, Opechancanough: Three Indian Lives Changed by Jamestown*
- 34 . . . Book List
- 35 . . . Volunteer Corner
- 36 . . . Donors & Members

### 11 Disappearing Delmarva

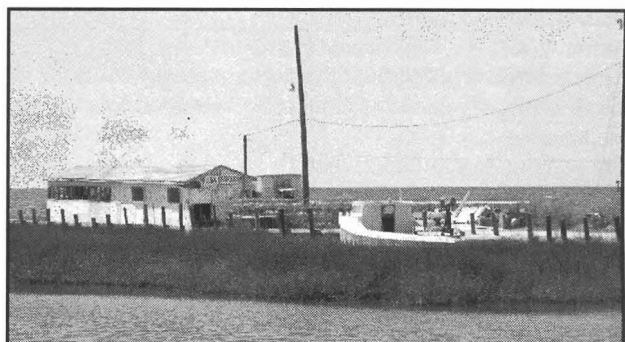


20  
Still Searching  
For Aunt Dilly

### *A Bridge to the Past: From Jamestown to Delmarva*

- 12 . . . Dutch Raids on Jamestown
- 14 . . . John Smith's Encounters with Native Americans in the Chesapeake Region
- 15 . . . A Sussex County, DE, Road from 1866 to Today
- 17 . . . Smith Island: A Fading Way of Life
- 20 . . . Still Searching for Aunt Dilly
- 22 . . . Migration from the Delmarva Peninsula
- 23 . . . The Gibbs and Cottingham Ferries Across the Pocomoke River
- 26 . . . Round the Pond
- 27 . . . The Corinthian Was Speedy
- 28 . . . A Look at the Historic Rehoboth Academy
- 30 . . . Tugboat Rail Transport Across the Chesapeake Bay
- 32 . . . Office of the Commissioners for Somerset County

17  
Smith Island



### Volume 14 No. 6 June 2007

Director, Rebecca F. Miller. Research Assistant, Aaron Horner. Secretary, Donna Messick.  
Library Technician/Web Designer, Iris Powell. Graduate Assistants, Matthew Heim and Matthew Mitchell. Archivist, Simone Myree.

This issue and back issues of the *Shoreline* may be purchased for \$10 each by contacting us at 410-543-6312 or rcdhac@salisbury.edu.  
© 2007 Nabb Research Center at Salisbury University. All rights reserved. Reproduction in whole or in part without permission is prohibited. Any views or opinions presented in this newsletter are solely those of the individual authors and do not necessarily represent those of the Nabb Research Center or Salisbury University. *Shoreline* is published biannually by the Nabb Research Center, 1101 Camden Ave., Salisbury, MD, 21801. Printed in the USA by the Publications Office, Salisbury University, Salisbury, MD.