

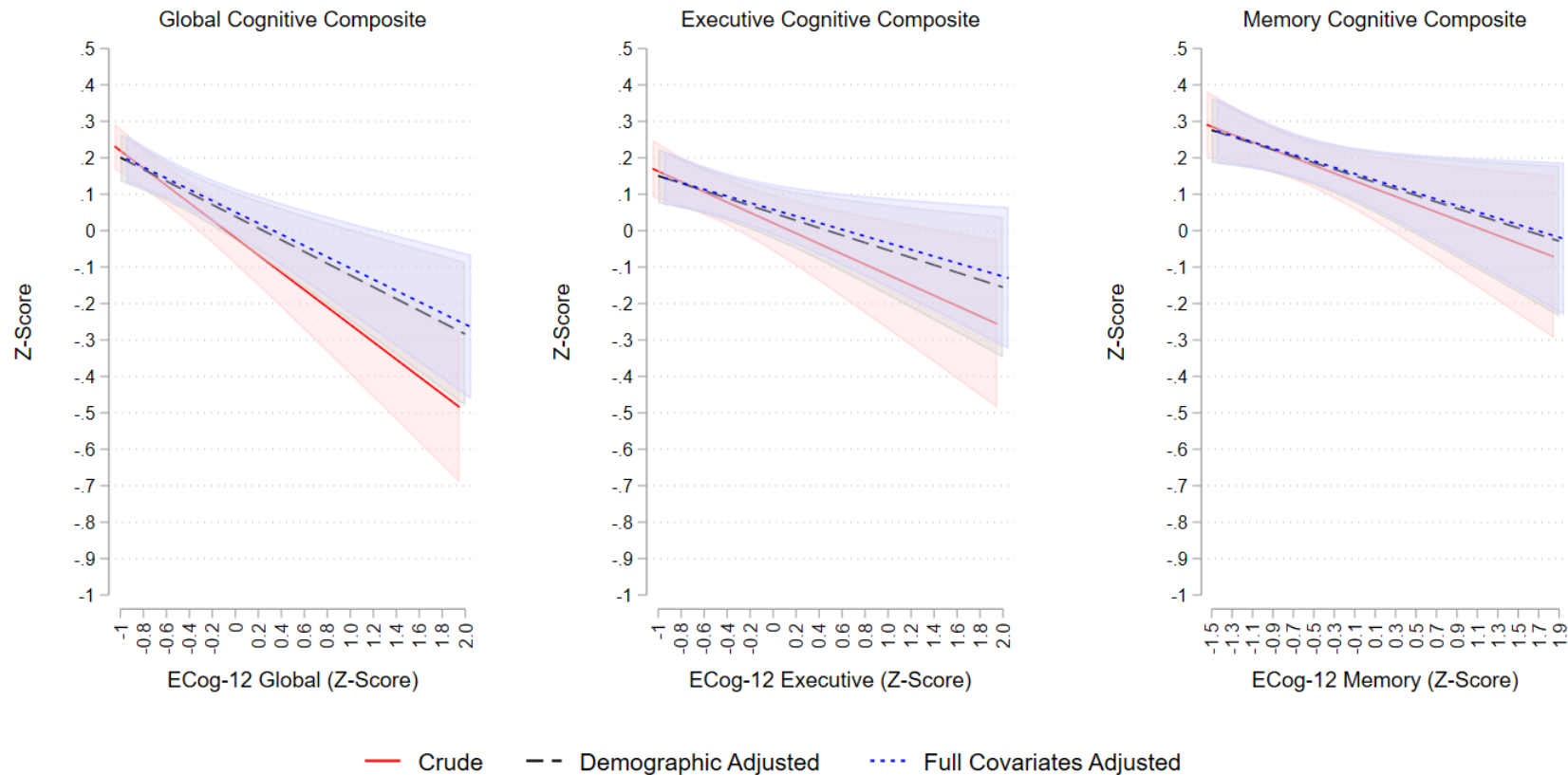
This work is on a Creative Commons Attribution-NonCommercial 4.0 International (CC BY-NC 4.0) license, <https://creativecommons.org/licenses/by-nc/4.0/>. Access to this work was provided by the University of Maryland, Baltimore County (UMBC) ScholarWorks@UMBC digital repository on the Maryland Shared Open Access (MD-SOAR) platform.

Please provide feedback

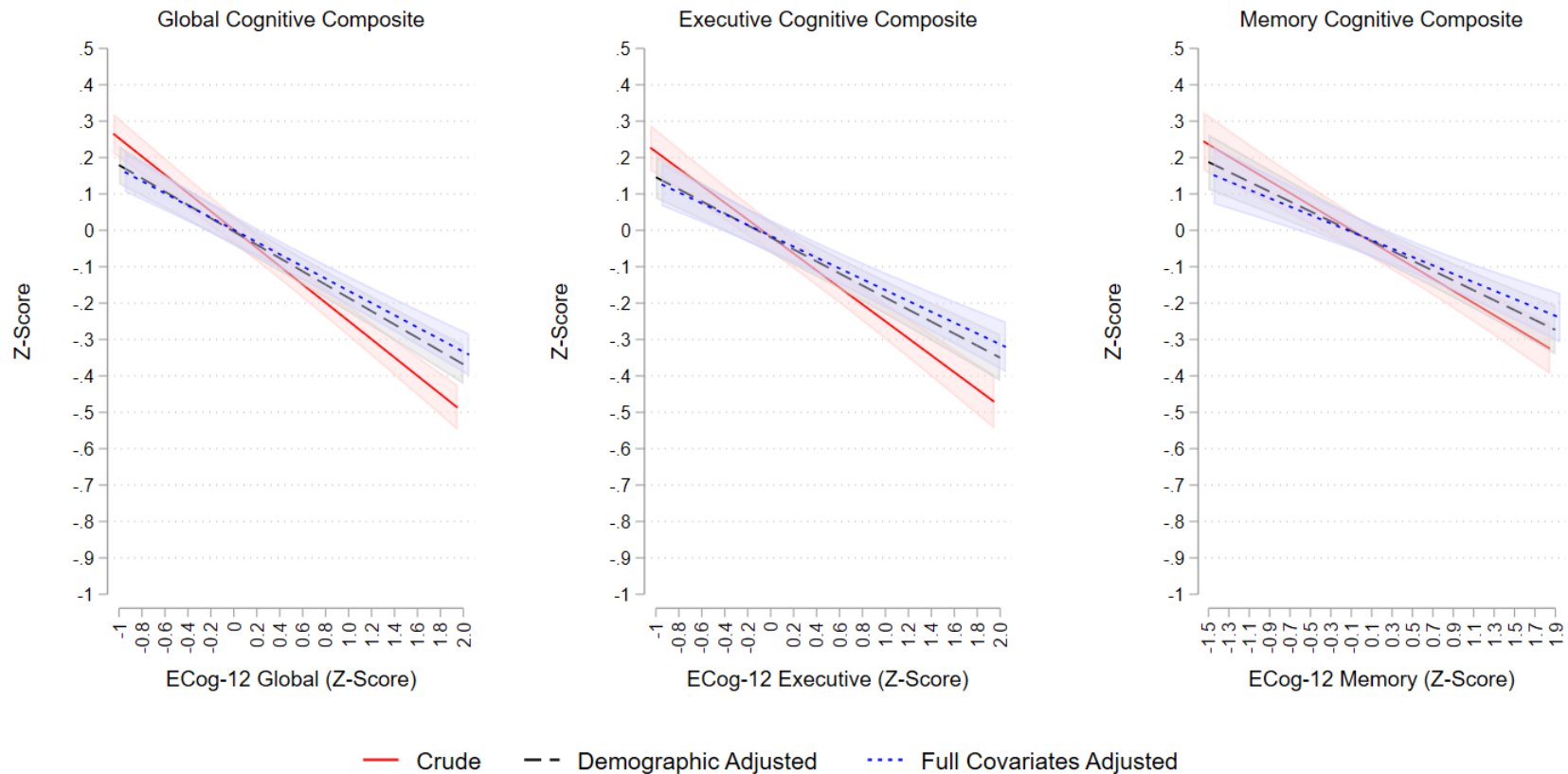
Please support the ScholarWorks@UMBC repository by emailing [scholarworks-group@umbc.edu](mailto:scholarworks-group@umbc.edu) and telling us what having access to this work means to you and why it's important to you. Thank you.

**Supplementary Figure 3.** Average marginal mean estimates for objective cognitive performance (and their 95% confidence intervals) as a function of subjective cognitive decline (ECog-12) by report of worry or belief of problems with attention, concentration, or memory (Panel A=No; Panel B=Yes). Results are from the Study of Latinos-Investigation of Neurocognitive Aging (SOL-INCA).

**PANEL A = NO**



**PANEL B = YES**



**Supplementary Figure 3 Notes:** Demographic adjustment includes age, education, sex, and Hispanic/Latino background. Full covariates adjustment additionally accounts for hypertension, diabetes, hypercholesterolemia, current smoking status, Center for Epidemiologic Studies Depression Scale-10, and Generalized Anxiety Disorders Scale-7 scores. ECog-12 = 12-Item form of the Everyday Cognition Scale.