

# State-To-Date

VOL. 32, NO. 9

FROSTBURG STATE COLLEGE, FROSTBURG, MARYLAND

NOVEMBER 5, 1980

## State Champs!!!

The Frostburg State College Women's Field Hockey team won the Maryland State Tournament Sunday against Mt. St. Mary's. Their first game, at the tournament, was against UMBC on Saturday morning. FSC topped UMBC 6-2. Barb Barrett was the game's leading scorer with 3 goals and assist to her credit. Kim Flickinger, Shari Mantini and Barb Kinman also scored goals during the game.

The Towson State Field Hockey team was upset next, when the Bobcats beat them 1-0. This is the first time the Frostburg Field Hockey team has beaten Towson State in five years. Barb Kinman had the only goal in the game, at the 3 minute mark of the second period.

On Sunday, Nov. 2 Frostburg beat Mt. St. Mary's 1-0, to win for the first time, the Maryland State Field Hockey Tournament. Kim Flickinger scored the only goal in the first half at 30:02. That goal was unassisted.

Goalie, Jean Goldsborough played the entire tournament, she had 34 goalie saves out of 36 shots on goal. Goldsborough recorded two shut outs during the tournament.

Coach Christine Lottes said, "I'm proud of the team's hustle and the skill and the desire demonstrated by them, this weekend," she added, "I can honestly say that all of the Frostburg team played three superior games. We expect to

enjoy this victory briefly and then get to work in preparing for regional competition. Besides the already mentioned performance of our scoring attack, Mitch Lewis, Carol Mui-se, Maureen Beck, Theresa Fumari, Tammy Walz and Kelly Hyde were outstanding in moving the ball and defensive play."

Frostburg has won a bid to attend the regional tournament at Gettysburg College, PA., on Nov. 7 & 8. The Bobcats are seated 7th in the 8-team tournament. They will be playing 2nd seated Glassborough State College of N.J. We wish the best of luck to the Women's Field Hockey team. "You have the talent and the desire!", Miss Lottes added.

## International Education Symposium

Frostburg State College and Allegany Community College will jointly hold a symposium on International Education, on the FSC campus on November 14th and 15th. This colloquium is in response to the President's Commission Report on Foreign Languages and International Studies, and will focus on strategies by which faculty can incorporate international perspectives in their course offerings.

This symposium is conducted for both faculties and will feature several resource consultants, including: Thomas Collins, Consultant, Global Perspectives in Education, and National School-boards Association; Dr. James E. Harf, Executive Director, Consortium on International Education, Ohio University;

Howard Leavitt, Director of International Programs, International Council on Education for Teaching, and Vice-President, Consortium for International Cooperation in Higher Education; Nico Suarez, Chair, Humanities Department, Simon Rock College Campus of Bard College, Annandale-on-Hudson, N.Y., and Poet from Bolivia; Robert Thurman, Chair, Department of Asian Studies, Amherst College, Amherst, MA, and President, Shunyata Institute of Buddhist Studies; Andrew Smith, Consultant and Writer, Change Magazine.

In addition to faculty workshops on strategies for instructional development, other speakers will promote international awareness and understanding

through related presentations. The general public is invited to attend these offerings which include: "The Future of International Education," Dr. James E. Harf; "Poetry Readings," Dr. Duane Locke and Dr. Nico Suarez, Poet from Bolivia; "Male and Female Jungian Symbols in Art and History," Dr. Henry Berne; "Zen as a basis for Life," Mr. Albert Low; "Lao Tse's Tao Te Ching," Dr. Richard Weigle. Other cultural presentations include: a model class in Hatha Yoga; international dance, by the Frostburg Ballet Company; poetry critique by Nico Suarez, Duane Locke, and Alan Britt; ceramics exhibition and sale, Charles Stump; "Gymnastics and International Music," Ms. cont. page 5

## Pre-registration Begins Nov. 6

Pre-registration for continuing students for Spring 1981 will be conducted November 6-18. Pre-registration materials will be placed in the dormitory mailboxes for resident hall students. Off-campus students are requested to pick up their packets at the Registrar's Office, Administration Building, weekdays between 8:30 a.m.-4:30 p.m. ALL STUDENTS ARE REQUESTED TO SIGN THEIR COURSE REQUEST CARDS. Freshmen are to have their advisor's signature, as well. Deadline date for submitting the course request card is Tuesday, November 18.

Pre-register. Continuing stu-

dents who do not submit course request cards by November 18, will not have the opportunity to register until Wednesday, January 14, 1981, the first day of classes, at the Registrar's Office. Students who are undecided about returning for the Spring 1981 semester should pre-register, but notify the Registrar's Office as soon as possible after withdrawal decision has been made.

Bills for continuing students will be mailed to the permanent address during the week of November 24. Any student who pays this bill by December 15, 1980, will receive his academic class schedule card and

other materials by mail at his permanent address. Any student who does not choose to pay by mail, may pay in person at the Business Office and pick up his schedule at the Registrar's Office, on any work day. On Sunday, January 11, and Monday, January 12, fees will be collected at the Business Office and schedule cards will be distributed at the Registrar's Office, new Administration Building. Avoid the hassle. Make financial arrangements by December 15, 1980, if possible.

The Registrar's Office is urging all students to keep their local and permanent addresses updated at that office.



Rich Prather, last Saturday's leading rusher, gains a few yards during the second quarter.

## Bobcats' Prayer Answered

Last Saturday, in a cold wind, that forced most of the spectators into warmer quarters, the Bobcat Football team completely dominated St. Francis (PA), and walked away with a 38-17 victory.

In a game that was all Frostburg's, the Bobcats had twice the total yardage that St. Francis was able to amass, three interceptions, six quarterback sacks and four blocked passes.

After a scoreless first quarter, the Bobcats made up for lost time, and scored twice in the second quarter. The first score was set up by two key plays. The first, was a 25 yard punt return by Todd Carey, that put the Bobcats on the Red Flash 35 yard line. The second key play came 4 plays later, when Rich Prather broke through the left side of St. Francis' defense for a 15 yard gain. This run put the Bobcats in a first and goal situation on the Red Flash 8 yard line. Three plays later, Keith Shelly followed the Bobcat front line, for a one yard touchdown sneak. Tom McKinney added the extra point, and FSC held the lead 7-0.

Frostburg held St. Francis for no gain, on the Red Flash's next possession, and took over control of the ball on their 31 yard line. The key play of the series came 6 plays later, when

Keith Shelly fired off a pass to Fred Jones for a gain of 25 yards. Two plays later, Rich Prather went in, from 23 yards out, for a touchdown. Tom McKinney again added the extra point, to put the score FSC 14, SFC 0.

Following this touchdown, Frostburg's offense took a break while the defense went to work. Marcel Van Vierrsien picked off a St. Francis pass, and on their next series of downs, a St. Francis field goal was blocked.

The first half ended with Frostburg out ahead, 14-0. The Bobcats led the Red Flash, in total offense, 226 yards to 64 yards.

The second half started badly for the Bobcats. On their first series of downs, the Bobcats fumbled on their own 31 yard line. St. Francis scored four plays later to change the score to, FSC 14, SFC 7.

The Bobcats took the following kickoff, and 12 plays later, Rich Prather went over from 6 yards out, to boost the score to 21-7, Frostburg.

Frostburg kicked off to St. Francis, and six plays later Kevin Burnett grabbed a Red Flash pass, and returned it to the one yard line. Keith Shelly took the ball on a 1 yard QB sneak for Frostburg's fourth TD.

St. Francis returned the cont. page 5

# Editorial

# Today On Who Cares?

*I miss the speakers!*

For the years that I have been here at Frostburg State College, I have thoroughly enjoyed the speakers and guests that were brought to this campus by the Student Artist and Lecture Series. Each year, this group, funded through student fees, brought speakers (such as David Toma, Jesse Owens and Benjamin Hooks), performers (the Amazing Kreskin, Tamburitzens, Connecticut Dance Theatre and P.D.Q. Bach) and artists (Duane Hanson), to the campus, for the cultural enrichment of the students, faculty and community. All of these events were heavily attended by the students. The Artist and Lecture Series always had a yearful of good people to see.

This year, however, the Artist and Lecture Series seems to have let the students down. Instead of a pre-planned, well publicized year of guests and speakers, the Artist and Lecture Series has no scheduled series. So far, the group has teamed up with CCB to bring Robert Klein to campus. The poets coming to the Educational Symposium are partially funded by the Artist and Lecture Series. But, so far, the Artist and Lecture Series has not brought anyone to campus on their own.

Something is most certainly wrong with the Artist and Lecture Series this year. Last year, they had an excellent schedule. This year—zilch. Why has this happened? Come on Artist and Lecture Series, the series is too important a student activity to be lost. A schedule of speakers that the students enjoy is too great a loss to be taken lightly.

Perhaps the spring semester, of this year, will offer the students of this campus a wider range of activities, sponsored by Artist and Lecture Series, than we have had thus far.

Today on "Who Cares?" we examine:

**REDHEADS:** When you hear someone called "that wacky red-head," who do you think of? Lucille Ball, right? But how about George Washington? Or Mark Twain? Both had red hair, too, though the former is usually pictured with a wig on, and the latter is usually pictured as an old man with white hair. Some other famous people that you may not guess were red-heads include William Shakespeare, General Custer, Henry VIII of England, and Napoleon.

**FOLLOWING SUIT:** When William Wordsworth went to the Royal Palace in 1843 to be appointed poet laureate of England, he borrowed a suit from his friend, Sam Rogers, so that he would be properly attired for the ceremony. When Alfred Lord Tennyson succeeded Wordsworth in 1850, he too lacked proper apparel for the ceremony, so he "followed suit" and borrowed the same outfit from Rogers.

While we're on the subject of

poet laureates, another person you won't care about is John Betjeman, who became England's poet laureate in 1972. Betjeman made a rather unusual request when he accepted the post—instead of the 27 pound cash prize that is generally awarded, he requested that he receive bottles of wine from the Royal Win Merchant of equal value to the cash prize. His request was granted.

**IT'S NEVER TOO LATE:** In 1685, a British rebel, the Duke of Monmouth, who was an illegitimate son of King Charles II, was beheaded in a reportedly messy execution (it "took five chops" according to one eyewitness). After the execution was completed, however, it was suddenly remembered that the Duke had never had a portrait of himself painted. Since he was, after all, a pseudo-prince, his executioners considered it important to have one done. Consequently, the head was retrieved, and sewn back on the body, and the Duke was propped into a pose. The resultant portrait is now in the

by R.U. Apathetic

National Portrait Gallery in London. The artist is rumored to have pronounced the Duke an ideal model—he never once had to be asked to "hold still." So...any of you Art majors who are looking for models, try the Biology department (in particular, try Chris Tutin's lab cabinet—she indicated that she was willing to lend out her cadavers for this purpose, saying "if you can thaw 'em, you can draw 'em.).

**QUICKER THAN THE EYE:** Did you know that a bullet cap explodes 1000 times faster than a soap bubble? A soap bubble takes one-thousandth of a second, while a bullet cap takes one millionth of a second.

**DID YOU** know that the first coin (a penny) was issued by the U.S. government in 1787? Its motto was "Mind Your Own Business."

**TUNE-IN NEXT WEEK** when we ask "Who Cares?" who won the presidential election?

## Slide Presentation

We invite all to spend a pleasant evening on November the thirteenth in the West End Room of the library (Room 210), viewing slides and film strips on the Non-Western World (Asia, Africa and Latin America). The presentation will begin at 8 p.m., but we invite you to come at any time and stay as long as your time will allow. Hope to see you there.

Esther J. Doerr  
Elinor Burkett  
Hazel G. Ramsay

## Attention: Commuter Club

People who live in Cumberland, Md. and attend FSC. The off-campus committee is interested in a Commuter Club from Cumberland to FSC and back daily. If you are interested, contact Randal Ranker, your off-campus representative at 722-2441 (after 6 o'clock), or leave your name and phone number at the SGA office.

# Letters to the Editor

Dear Editor,

As a band member, I feel I must protest the juvenile and unprofessional behavior of the FSC Bobcat on Saturday, November 1st, at the last home game of the season. The team mascot has no place on the field with the band and audience, and ruins the effect of many hours of hard work. It is difficult for an organization to maintain a high level of pride in the results of their time and effort when the integrity of those results is being undermined by a buffoon in a Bobcat suit. To clarify what I mean by "unprofessional behavior," let me describe what happened Saturday afternoon. The band had put in over ten hours this week alone on a totally new and intricately com-

plex show, the most difficult we had yet attempted. We wanted to look our most polished and professional for the returning alumni and extra fans we knew the last game would draw. By following our drum major around, conducting "with" her behind her back, and generally making a nuisance of himself, the Bobcat made a mockery of her skills and the total band's performance. It's too late to do anything but protest now, but Bobcat, whoever you are, please take this complaint to heart. Keep your antics where they belong—not out on the field with the band, but on the track in front of the fans!

On behalf of the FSC  
Marching Bobcats,  
Joyce Comer

Dear Editor,

I feel the way CCB handled the admission to students to the semi-formal dance was very aggravating. If admission to the CCB dance required a Frostburg State College I.D. (which was never strictly enforced in previous years) then CCB should have informed the student body on their advertisement for the dance. Furthermore, the advanced sale of tickets for the special dance should have required an I.D. before the tickets could be purchased. I hope in the future CCB will get their act together.

Aggravated

## Off-Campus Directory

Because many students have not updated their student information cards, Off-campus students must stop by the SGA office by Nov. 7 to verify their address and phone numbers. The off-campus committee will use this information to publish an off-campus phone directory. The committee meets every other Thursday at 6:30 in rm. 203-204 in the Lane Center. All off-campus students are invited to attend meetings and voice their opinions.

Sincerely yours,  
Rick Brindle  
CCB President

Open letter to students:

I would like to express my regret along with the regret of the entire College Center Board in regard to the inconvenience experienced by many of you Friday night at the Halloween Dance. Although the event was an overall success, a bitter taste was still left with all of us for not being able to allow everyone into the dance.

Instead of ticket sales being at the door, they should have

been sold in advance to comply with the Lane Center's capacity limits of 500 persons. I feel compelled to take full responsibility to this lack of foresight and better judgement. Again, we are sorry and sincerely hope that this will not affect in any way the tremendous amount of support we have been receiving from you so far this year.

State-To-Date is a weekly publication of the students of Frostburg State College. Opinions expressed herein are those of the author and do not necessarily reflect those of the College or subdivision thereof. The staff encourages input and response from the readers. Letters to the Editor must be signed (writer's name withheld upon request) and should not exceed 200 words. Free advertising is available for registered campus organization on a space available basis. Deadlines for articles and letters is 4:00 p.m. Friday prior to publication; deadline for advertisement is Thursday 4:00 p.m. prior to publication. All material submitted automatically becomes the property of State-To-Date. State-To-Date is located in 232 Lane Center, phone 689-4326.

## State-To-Date

Tom Creamer  
Editor-In-Chief

Jeff Samuels  
Production Manager



Dr. James V. Swanson  
Advisor  
Dave Kahn  
Business Manager

Writing and Production Staff:  
Sally Lyon, Pam Samuels, Meg MacDonald, Kim Panzero, Mitch Yockelson, Joann Hastings, Mary Cialella.

# International Education Symposium

by Dr. Paul LaChance

"The third time pays for all."  
—Bilbo Baggins, "The Hobbit"

Chair, COFLA

The Committee for the Future of the Liberal Arts is joining forces with Drs. Gary Paul, Joseph Rodeiro, Harold Cordts, and numerous RESA faculty members—including our President, Vice-President, and our three new Deans, Drs. Cotton, Kealy and Smith—in order to host on our campus the International Education Symposium, Friday and Saturday, November 14-15, 1980. The events scheduled will formally initiate, it is hoped, a firm, college-wide commitment to high quality International Studies on this and area campuses.

## How Come?

Speaking at the Allegany Liberal Arts Festival last April, Mr. Botstein, President of Bard College, N.Y., exhorted our college community to embrace some particular, energizing dedication that could give our campus a unique focus and purpose so that we would not fall prey to the fallacy of trying to be everything for everyone with no principal character, which Mr. Botstein said was the undoing of many of our nation's colleges. Just a few weeks later at the May RESA Symposium on International Education, Dr. Jablon, then Dean and now Vice-President for Academic Affairs, struck upon the idea (in what I considered a "heaven-sent moment") that what could serve as our campus' core dedication or individuating characteristic through the 1980's and after, might just be this focus of International Studies. In this connection, Dr. Jablon has written to Dr. Roberts of RESA, "We urge faculty members to develop a global approach to their courses and we endorse the value of international education experiences for both our students and faculty." He added, in that same letter of September 18, 1980, that he felt the symposium to

internationalize the curriculum was "an endeavor worthy of support."  
So What?

The COFLA Committee which I chair rejoices in the advantage that the global perspective of education gives to our on-going efforts to elevate awareness of and appreciation for the liberal arts: seen as mere aged, entrenched, and dead-weight prerequisites for a diploma, the liberal arts suffer in even the most hallowed of traditions; but seen as the commitment to foster and preserve the finest fruits of human culture in our shrinking world, the liberal arts shine with the lustre of a polished sword wielded to defend the hallmarks of human excellence from whatever art or culture they are gleaned.

## What Fight?

Although scarcely a handful of students (but a fair portion of faculty members) attended last April's Festival Keynote Address by Dr. Giles Gunn, he has written from the University of North Carolina that he found our Festival "well conceived," "very successful," and "particularly vigorous." Then he added, "If you are like the rest of us, you and your colleagues no doubt consider yourselves an embattled minority, but be of good cheer for the company of the embattled is actually larger than we all sometimes realize, and anyway, the goal is not victory, whatever that would mean, but to be able to say with Henry IV to the tardy Crillon after a great battle had been fought: 'Hang yourself, brave Crillon! we fought at Arques, and you were not there.'"

The COFLA Committee urges the faculty and staff to attend the upcoming International Education Symposium and hopes all will encourage active and full student participation.

## ACC and FSC team up for Business Degree

David L. Sanford, Dean of Admissions at Frostburg State College, and James Snider, Director of Admissions and Registration at Allegany Community College, have announced that beginning with the 1981 spring semester, it will be possible to begin work toward a Bachelor's degree in Business Administration or Accounting on the ACC campus.

Thus, interested students may take all classes on the ACC campus during the evenings if

so desired. The first two years of credit and the Associate in Arts degree will be conferred by ACC; the second two years of credit and the Bachelor's degree will be conferred by FSC. This limited pilot program will, hopefully, be a model that will lead to additional programs as needed.

For additional information, contact either FSC Admissions Office or ACC Admissions Office.

## Uncle Frosty

Uncle Frosty will answer any career related question from the college community. Not all questions can be printed due to space limitations and good taste. Uncle Frosty will send a personal response to readers whose letters are not answered publicly. Send your queries to Uncle Frosty, c/o Counseling Service.

Dear Uncle Frosty:

Do you believe in the theory of life after college? Or, is that merely a sham used to control the masses?

A Searching Student

Dear Searching:

There is life after college. It is not just a theory, it is a fact. College is not a refuge or hiatus from life, it is part of a continuing process. This applies to all areas of your life, not only career choices.

You appear to be questioning your own behavior, goals and motivations. If your self-examination doesn't help you to develop sound answers, talk with someone at the Counseling Center. I bet that experience would help.

## Gallery Happenings

Terence Burns, who studied at Black Mountain College, is exhibiting collaged images and objects. He visited the gallery on November 3.

The Fine Arts Gallery at Frostburg State College is currently showing varied exhibition of work by three Washington artists, from October 30 to November 13.

Betsy Packard makes sculpture out of things which mean something to her, but she transforms the materials so completely that the new object takes on an entirely different meaning. She also visited on November 3, to discuss her display of sculptures.

Nan E. Schroeder has lived in Japan and Peru, and has traveled extensively in the United States and Canada. Her weavings draw on the traditional weavings of many cultures. She will visit the gallery on November 12, at 8 p.m.

The Fine Arts Gallery, which is located in the Fine Arts Building at Frostburg State College, is open Monday through Thursday, noon to 4:30 p.m., and Sundays, 1:00 to 4:30 p.m.



## COSMIC CAPERS

with Dr. Bob Doyle

**The Week of Nov. 3-9**

The week opens with brilliant Venus passing just to the right of Saturn in the eastern 6 a.m. skies. The bright planet Jupiter appears above and to the right of the pair. On Tuesday morning the crescent moon joins the planetary threesome, appearing a bit to the left of the Saturn Venus. There is no danger of cosmic collision as all 4 bodies, though nearly in the same direction, are millions of miles apart. The moon is but a quarter of a million miles away while Venus, Jupiter, and Saturn are 110-million miles, 580-million miles and 960-million miles distant respectively.

"The Universe of Dr. Einstein," a charming account of the great scientist's life and his ideas, is now being shown at the Frostburg State College Planetary each Tuesday at 7:30 p.m. and each Sunday at 1:30 and 2:30 p.m. These free public programs are in the front lobby of Tawes Hall, in the mid-dle of the FSC campus.

**The Week of Nov. 10-16**

This week the moon returns to the evening sky, growing from a slender crescent to a half-full by the weekend.

By this time of the year, even the most casual stargazer has noticed a tiny star cloud in the middle of the eastern sky. This is the Pleiades or Seven Sisters star cluster, an assemblage of stars flying together through space. With binoculars, the Pleiades is a beautiful sight, resembling diamonds on black velvet. There are more than 500 stars in the group which is so distant that star light from the Pleiades takes 5 centuries to reach us.

The Frostburg State College Planetary is now featuring "The Universe of Dr. Einstein," an entertaining review of the life and ideas of the great scientist. The Planetary each Tuesday at 7:30 p.m. and each Sunday at 1:30 and 2:30 p.m. These free public programs are in the front lobby of Tawes Hall, in the mid-dle of the FSC campus.

## Check Out The Bikes In The Library

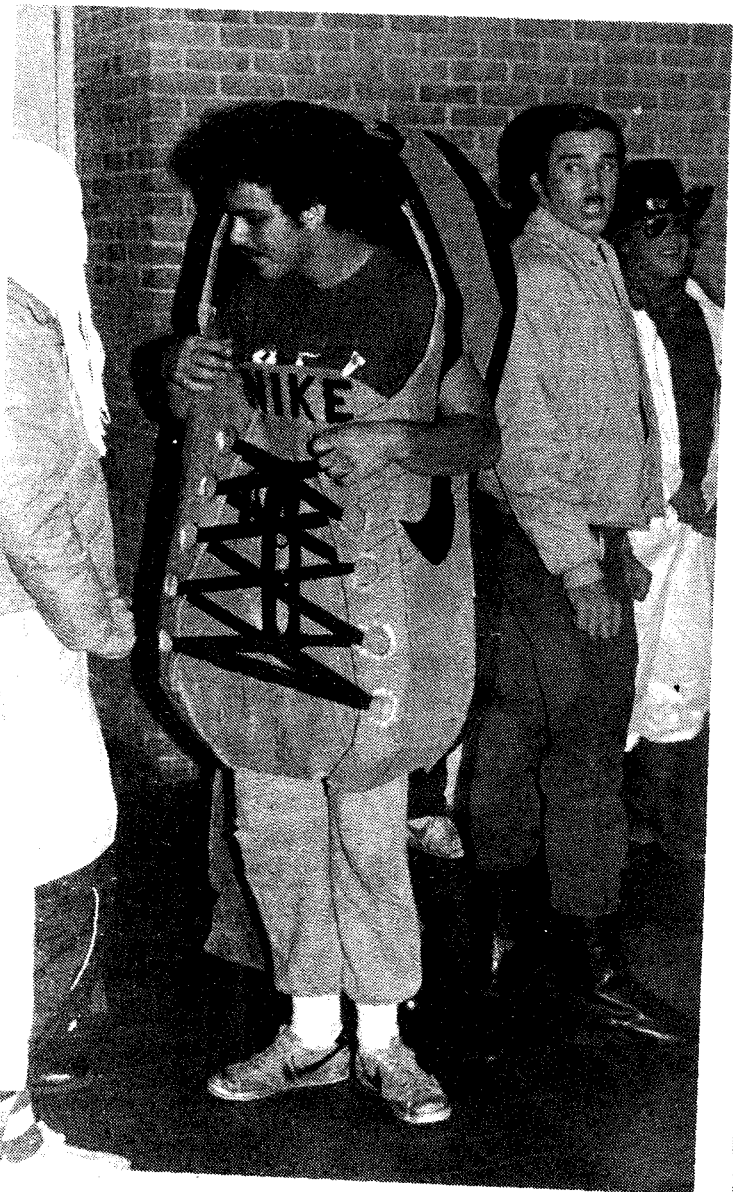
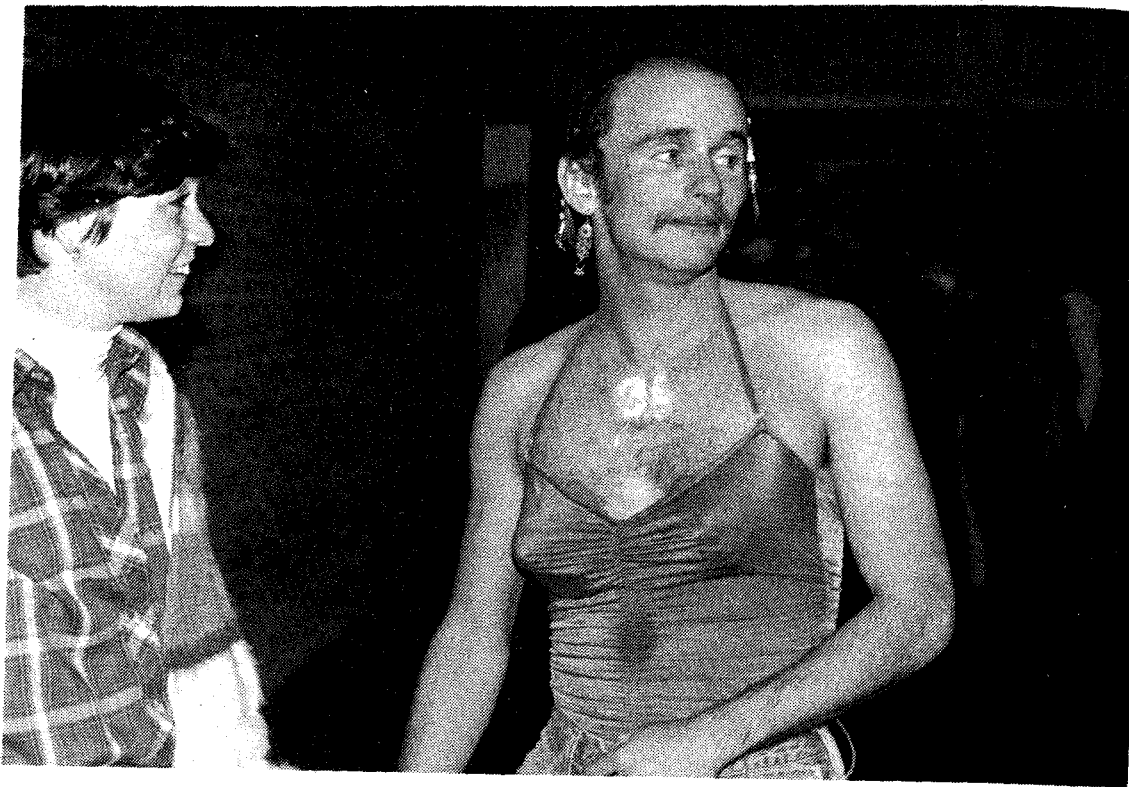
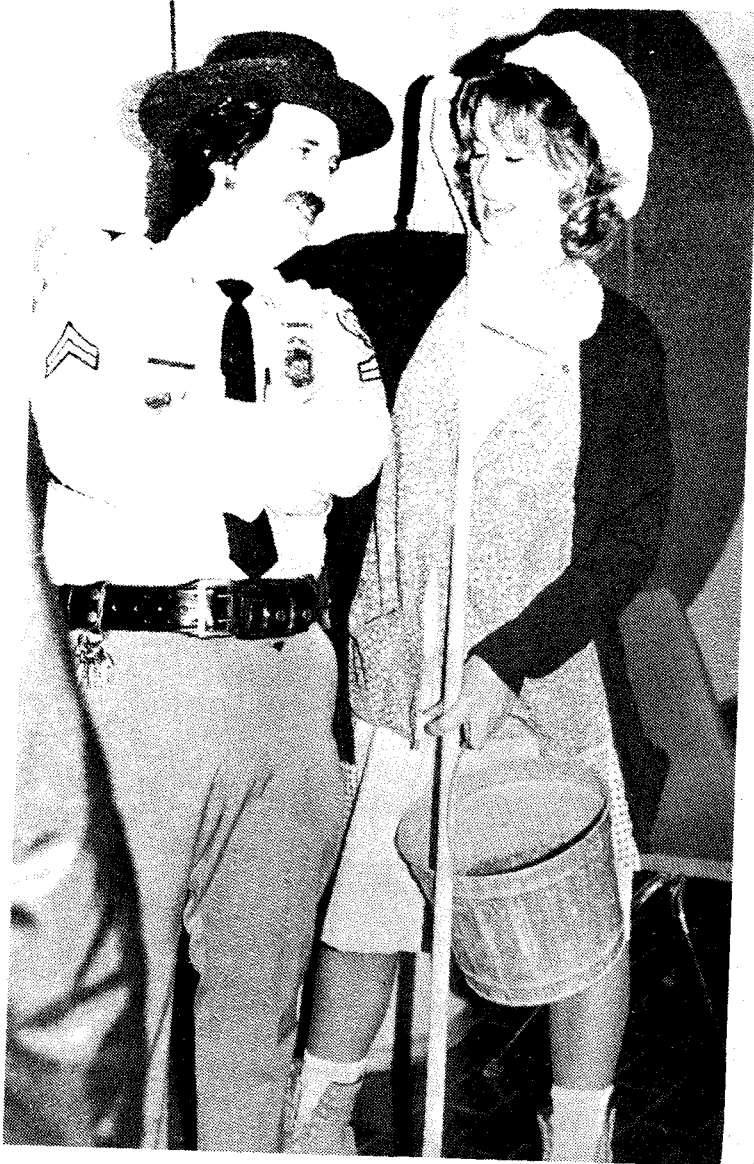
In 1791, the French Comte de Sivrac rode through the gardens of the Palais Royale on a vehicle with two wheels joined by a wooden, horse-shaped frame bearing a saddle for the rider. In 1818, when a London coachmaker Dennis Johnson made the saddle adjustable and added an armrest to his similar machine, it was known as a "Hobby Horse" or a "Pedestrian Curricule". In 1898, American bicycle troops trained for combat in Cuba.

Today in the United States, an estimated 95 million bikes are in use, and a cottage industry in experimental human powered pedal craft is busily producing bikes like the two-seater Vector Tandem, which recently set a world speed record of 62.93 mph - twice as fast as a good ten-speed can go on level ground.

RIDE ON!, a Smithsonian Institution Traveling Exhibition on display at the Library from November 8 through December 7, shows by means of color and black and white photographs with text, the social and technological development of the bicycle. Though mainly emphasizing the history of biking, the exhibition also gives a perspective on the present and future role of the bike in pollution-free, fuel-less transportation and a fitness-minded society.

Plans and bike routes for the cross-continental bike trip scheduled for this coming summer by former phys. ed. graduate assistant Jimmie Swain and a group of teen-agers, will also be on display. A souvenir bibliography on biking, prepared by Library intern Steve Koch will be available to visitors to the exhibition.





## Scenes From Autumn Week

One of these people (top left) came in costume, but we're not sure which it is.

A tennis shoe (left) came dressed as Ed Schuller, and won the "most creative costume" contest.

These fellows (top) came to watch all the funny people.

Dick (above) may not be a perfect "10" but he sure is beautiful.

Rich Ballard has a heart to heart talk with Kenny Warren and his dummy (below).



# Lady Bobcats Falter, Place 11th In East

Frostburg's Women's Cross Country Team Saturday placed 11th out of 43 teams at the AIAW Eastern Regionals, a good showing for the second-year team, but one that is nevertheless being viewed with some disappointment. After a strong race against nationally-ranked Navy the week before, the Lady Bobcats had been expected to challenge for one of the top three positions. The meet produced a number of upsets, however. Defending champion Slippery Rock was beaten by Army and Middlebury (VT) and had to hold off a strong Trenton State team for the final Nationals berth. Navy, one of the favorites, ended up fifth.

The Lady Bobcats started five freshmen and two juniors without previous college cross country experience, making them one of the youngest and most inexperienced teams in the field. Debbie Meberg led the team in 35th place, Hope McAlexander finished 55th, and Sophie Nor-

ris, Melissa Rogers, and Terry Kane completed the scoring in 107th, 110th, and 111th.

Frostburg Coach Ralph Perrey conceded that even on a good day, his team would have had to scramble for fifth place, but with the team running its poorest all-around race of the year, Frostburg slipped below several teams they had beaten earlier in the year.

Perrey accepted the blame for his team's performance, saying "I obviously didn't do the job as far as preparing the team mentally. That's very important when you have an inexperienced team in a high-pressure situation."

The Lady Bobcats wrap up their season Saturday at the Mason-Dixon Conference Championships at Mt. St. Mary's. Division I George Mason University is the favorite, but Frostburg is expected to rebound and offer their arch-rivals a strong challenge.

## Concert of Jazz

The Frostburg State College Jazz Ensemble will present a "Concert of Jazz" on Monday, November 10, at 8:15 p.m. in Compton Auditorium under the direction of Jon Bauman.

The program will begin with "Feelin' Free" by Sammy Nestico. This selection from the Count Basie library features Tom Harrison, piano. "Peachy", from the Doc Severinson band is next with solos by Tom Harrison, piano and Teresa Renner, trumpet.

Trombonist, Ron Grey, is featured on the next composition, "Portrait of a Lady". Ending the first half of the program is a swinging big-band Lennie Niehaus work, "Sorta

The Blues".

The second half of the program begins with "Blues For An Elm" with solos by Scott Heavner, tenor saxophone Steve Hopkins, trumpet, Vanessa Von Alt, alto saxophone and Tom Harrison, piano. "Strollin'", with a trumpet solo by Steve Hopkins is next.

"My Man Quincy" continues the program with solos by Ron Grey, trombone, Everett Johnson, guitar, Scott Heavner, tenor saxophone and Tom Huntington, bass. The swinging jazz standard "Day In, Day Out," from the Count Basie band concludes the concert.

There is no admission charge and the public is welcome.

### SYMPOSIUM from page 1

Margie Schaeffer and Mr. Rob Schimmer; introduction to Zazen Practice, Mr. Albert Low.

Further information about the Symposium can be obtained by writing to Dr. Paul LaChance, Symposium Coordinator, c/o English Department, Frostburg State College.

The colleges are sponsoring the Symposium through the Staff Development Consortium, a project of the Regional Education Service Agency (RESA), in which they are represented by Dean Alexander Humulock, Ms. Margaret Keller, and Mr. Jon Loff (ACC), and Dean Kenneth Jablon, Dean Ronald Kealy, Dr. Judith Thelen (FSC). This RESA project supports staff-development activities on the

campuses of the four colleges in Appalachian Maryland, which includes also Garrett Community College and Hagerstown Junior College. The symposium also is supported by the Maryland Committee for the Humanities and the Maryland Arts Council.



The Women's Cross Country Team (Shown Here) Placed 11th In A Field Of 43 Eastern Regional Teams.

### FOOTBALL from page 1

Frostburg kickoff to the FSC 45 yard line. A facemasking penalty against the Bobcats put the ball on the FSC 17 yard line. The Bobcats held St. Francis to a one yard gain for the next 3 plays, and forced the Red Flash to settle for a field goal. At the end of three periods it was FSC 28, SFC 10.

Frostburg marched down the field, on their first possession of the fourth quarter, and with six minutes left in the game, Tom McKinney kicked his first successful field goal of the season; FSC 31, SFC 10.

Following the field goal, Frostburg and St. Francis traded touchdowns. St. Francis scored theirs with 1:46 left in the game and Frostburg came back with just 6 seconds left in the game. Final score: FSC 38, SFC 17.

The Bobcat offense was led by Rich Prather, who carried the ball 130 yards on 17 attempts. Keith Shelly ran for 65 yards on 15 attempts, and completed 9 of 21 passes for 110 yards in the air. Doug Espie was the games leading receiver, pulling in 3 passes for a total of 53 yards.

The defense for the Bobcats was led by Terry Beamer, who finished off the day with 10 tackles two of which were QB sacks. Beamer was followed, in tackles, by Kevin Burnett (8 tackles, 1 interception, 2 broken up passes), Dave Baden (8 tackles, 1 sack) and Chip Armstrong (8 tackles).

The Bobcat's final game of the season will be played away next Saturday, against Geneva.

## Faculty Member Honored

Mrs. Sara L. Pierce, a member of the music faculty at Frostburg State College, has been selected as deputy governor of the Northeastern Region of the National Opera Association and as such will coordinate opera and opera workshop programs in Maryland and the District of Columbia with other states in the region.

She was named to the post at the association's national convention held at Birmingham, Alabama.

## "Universe of Einstein" to open

"The Universe of Dr. Einstein" is the title of a new planetarium show opening at the Frostburg State College Planetarium on Sunday, November 2.

Dr. Robert Doyle, planetarium director, said the show is a production of the Hansen Planetarium which reviews the life of Einstein and introduces his theories of relativity through examples from everyday life.

The show can be seen on Tuesdays at 7:30 p.m. and Sundays at 1:30 and 2:30 p.m. through November 25. The public is invited and there is no admission charge.

## Job Interviews

Bank & Casualty Life Insurance Company will interview on campus November 5th - Wednesday. Sign up in the Placement Office.

The Link Division of Singer Company will interview on campus November 10th - Monday. Last time this year: Graduate school seminar - Scheduled for December 3rd - Wednesday at 7:00 p.m. in 108 Gunter Hall. Sign up now and we will send you a reminder just prior to seminar date. For Juniors and Seniors. Sophomores welcome also, even if you haven't definitely decided or are only considering the possibility of Grad. School, plan to attend.

## Dance Marathon

The brothers of KZX athletic fraternity are teaming up with the American Cancer Society and having a dance marathon to combat cancer on December 5 & 6 at the Frostburg Armory. The dance will consist of 24 hours of dancing with a few breaks to eat etc. Many prizes will be offered:

1st prize . . . . . 2 TV sets  
2nd prize . . . . . 2-10 speed bikes  
3rd prize . . . . . 2 Savings Bonds  
Plus many consolation prizes such as, dinner for two at various restaurants around the area.

Any couple is allowed to enter and a \$5 entry fee donation will include two T-shirts, and free food and drink for 24 hours.

So, come on out, shake-a-leg, and support a good cause, hit the floor, and show the campus and community who is hard working and king of the dance floor!

For more information visit our booth in the Lane Center or contact Andy Parrish at X-7712 or Darryl Harri day X-7814. The faster you sign up, the better chance of winning!

## SGA Meeting

Thurs., Nov. 6  
8:00 p.m.  
Lane Center  
201

All are Welcome!

## ATTENTION DECEMBER GRADUATES

should contact the SGA office at Ext. 4304, regarding December Commencement exercises as soon as possible.

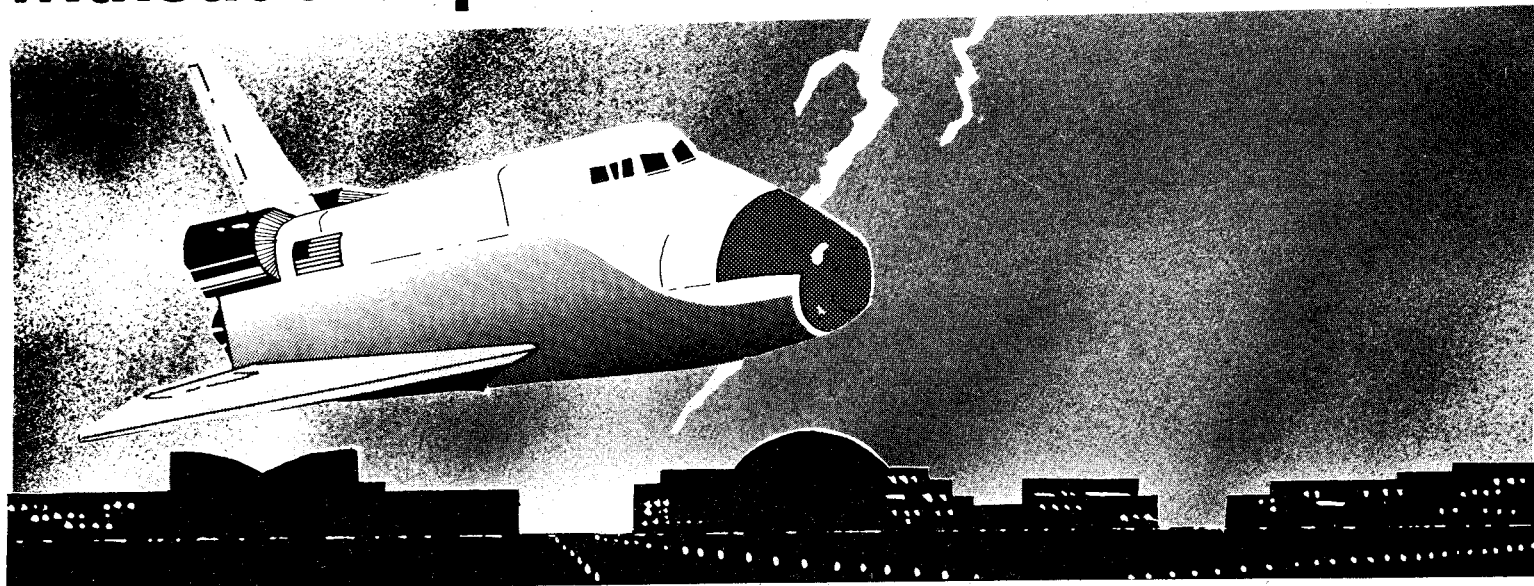
A slide presentation will be given on November 12 at 8:00 p.m. in Room 104 of the P.E.C.

A reception will follow

All are invited to attend.



# How do you practice space shuttle landings without the space shuttle?



**Simulation, an advanced...and advancing... technology is the answer.  
And Link is where it all began.**

Back in World War II, thousands of American pilots got their first "flying" lessons in the famous Link Trainer... the world's first flight simulator. When the pilot operated its controls, the "Blue Box" rotated about its pivots to provide a realistic simulation of the physical sensations of flight.

Forty years later, our newest flight simulators make experienced jet aircraft pilots sweat as they practice foul-weather landings and other difficult and dangerous tasks under the watchful eye... and instruments... of the instructor.

But today's official and public concern for Reliability, Safety, and Efficiency in power generating plants... both conventional and nuclear... has shifted the entire emphasis and is creating a whole new dimension in simulation systems.

New power-generating facilities cannot be brought on line without hands-on training for operators... And the training must be done in control rooms precisely duplicating those of the new plants. In addition, utilities and regulating agencies now demand specialized training (and retraining) for personnel who operate existing plants.

This unprecedented demand for power plant control room simulation systems has created one of the biggest backlogs of engineering/analytical/manufacturing pro-

grams in our long history and has opened up scores of opportunities for graduates in virtually every field of technology.

Link, as the pioneer in this existing field, is its leading exponent of new ideas. New ideas rank first among our many resources... and we actively seek them from our people. At Link, your assignments will give you opportunities to contribute meaningfully and creatively, as well as opportunities to learn from the leaders in the field.

To help ease the transition from the academic world to the practical world of engineering science, Link provides each new technical employee with a PROFESSIONALLY PREPARED ORIENTATION PROGRAM. Link technical staff members who have been through the program are unanimous in their praise of this program.

If you are interested in a career in any area of technology: **Electrical/Mechanical/Chemical Engineering • Physics • Nuclear Science • Health Physics • Mathematics • Computer Science • Thermodynamics • Heat Transfer • Fluid Mechanics.**

Think Link. There's no better place to start a rewarding and meaningful career than with the leader.

**For more information, contact your college placement office or write directly to Link, c/o Rob Stout, 11800 Tech Road, Silver Spring, Maryland 20904.**

**MEET  
SINGER LINK REPRESENTATIVES  
ON YOUR CAMPUS—  
NOVEMBER 10TH**

# Link

A DIVISION OF THE SINGER COMPANY

**For more information contact your placement office.**

Singer-Link is an equal opportunity/affirmative action employer actively seeking talent without regard to race, sex, age, religion, or national origin.

# Spelling Test For Literate Adults

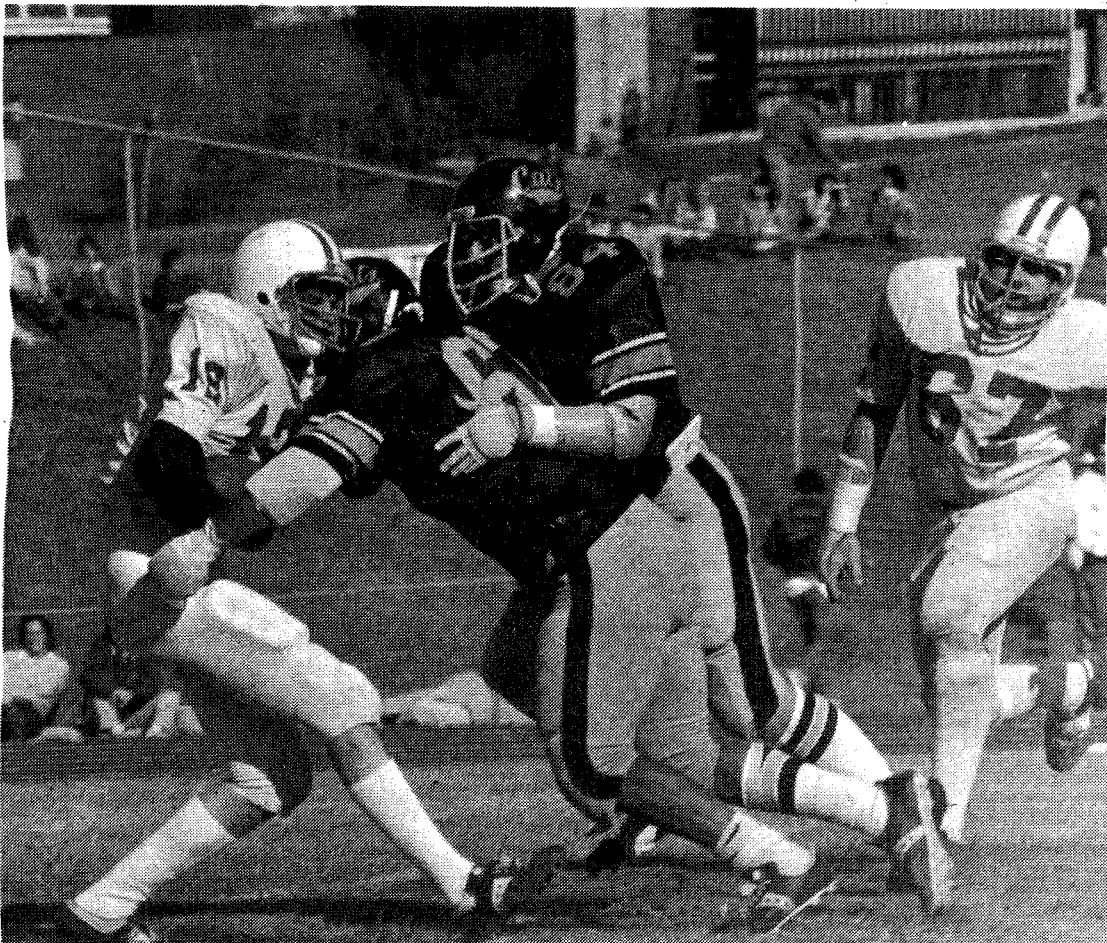
Which of the following words are spelled correctly?

accomodate	cannonical (religious)	benefitted	sacreligious
mocassin	ocassion	proceedure	skillful
exstasy	embarass	villian	quizz
rythm	disappate	comparitive	Buddah
proffesor	heighth	bullrush	privelege
concous	camelia	temperment	cleff (musical)
personnell			

Which of these words are spelled incorrectly?

embarrass	ukulele	innovate	desiccate
liquefy	gauge	assassin	liaison
coliseum	hypocrisy	paraffin	consensus
siege	controversy	ectasy	separate
battalion	broccoli	cemetery	aquarium
rarefy	mischievous	frolicking	hemorrhage
seize	accommodate	sizable	pyorrhea
shriek	inoculate	anoint	queue
acquiesce	judgment	calendar	naphtha
supersede	sacrilegious	boundary	plausible
weird	dittos	vermillion	beige
wield	dyeing (colored)	parallel	moccasin
kimono	accidentally		

For the answers, see the Find-It-Heres.



Jocko Pearson and Bill Boner team up to drop the St. Francis quarterback for a loss.  
Photo by Tom Creamer

# Menus For Chesapeake Hall

Wednesday

Lunch	Dinner
Grilled Hamburger	Stir Fried Steak over Rice
Cream of Tomato Soup	Baked Fish
Baked Macaroni and Cheese	Eggs and Mushroom w/Cheddar Sauce
Sweet and Sour Green Beans	Steamed Potatoes

Thursday

Lunch	Dinner
Pepper Pot Soup	Pork Roast with Dressing and Gravy
Ham, Lettuce, and Tomato Sandwich	Polish Sausage
Beef Noodle Casserole	Cheese and Brown Rice Bake
Buttered Peas or	Whipped Potatoes
Braised Celery	Carrots in Orange Sauce

Friday

Lunch	Dinner
Chili Dog	Grilled Chop Steak Country Style
Potato Chowder w/corn	Breaded Fried Fish
Beef Turnover w/Gravy	Cheese Omlets
Spinach	Parsley Buttered Potatoes

Saturday

Lunch	Dinner
Cream of Mushroom soup	Oven Fried Chicken
Open Faced Club Sandwich	Beef Burgundy
Scrambled Eggs	Whipped Potatoes
Buttered Brussel Sprouts	French Fries
Mexican Vegetable Medley	Savory Green Beans

Sunday

Lunch	Dinner
Roast Beef Au Jus	Cream of Chicken Soup
Cheese Souffle	Fishwich on Bun
Baked Potatoe	Old Fashioned Ground Beef Pie
Lemon Buttered Broccoli	Mixed Vegetables
Carrots	Harbard Beets

Monday

Lunch	Dinner
French Onion Soup	Tacos
Grilled Hamburgers	Turkey Pan Pie
Tuna Noodle Casserole	Curried Vegetables w/soy sauce
Buttered Green Peas	Spinach

Tuesday

Lunch	Dinner
Split Pea Soup	Veal Scalloppini
Cold Cut Sandwich	Baked Fish
Ground Beef and Potato Pie	Frittatas
Lyonnaise Carrots	Fried Potatoes
Buttered Zucchini	Oriental Style Vegetables
	Cauliflower Au Gratin

## ATTENTION ALL GREEKS!!

There will be a Greek Council Meeting on Wednesday, Nov. 5, at 7:00 p.m. in Room 202 Lane Center.

We will be discussing many important issues. A representative from each Greek organization is needed and would be greatly appreciated.

## BLUE MOON SALOON

November 7th & 14th  
Bando Crossing  
featuring

Steve James  
Nov. 15th  
Smith & Roberts

60 oz. pitcher of Beer \$1.95 !!

Grantsville, Maryland  
Corner of Rt. 40 & 495

895-5052

There will be a  
Blood Pressure Screening

November 11, 1980  
from 10:00 a.m. - 3:00 p.m.  
in

Lane Center Multi-Use Room

Sponsored by  
Delta Sigma Theta

# FIND IT WHERE

\*\*\*\*\*  
WILL DO TYPING work. Has to be readable. Supply own paper. \$1.00 per page. Contact Nancy (Frampton Hall 319-320) X4297 or 4305.  
\*\*\*\*\*

## ATTENTION STUDENTS!!

The gates by Cumberland Hall will be open on Sundays from 5-9 p.m. ONLY. Please be sure to move all cars before 9 p.m.  
\*\*\*\*\*

AUDITIONS ARE NOW being held for Private Instruction in Voice for next semester. Call 4116 or stop by FA 119.  
\*\*\*\*\*

Freshmen, who scored below 70% on the computation part of the California Achievement Test and have not taken a math course this fall, are advised to enroll in sections 05,06,07,08 or 09 of Math. 101, Mathematics for Human Affairs, this spring. A student may find out his score on the CAT in the Mathematics Lab, DH 206, from 9:00-4:00, Monday through Friday.  
\*\*\*\*\*

The Registrar's Office is preparing material for Spring pre-registration and we need to have correct local addresses for all students living off campus. Would you please check with the Registrar's Office as soon as possible in order to confirm your off campus address.  
\*\*\*\*\*

Help is offered to those students who feel a need, a want, or have problem that possibly could best be handled through a friendship with a mature couple. A home away from home so to speak—an association with couples having cultural and professional compatibility can be a great comfort in different ways, including benefits in the students scholastic pursuits. Those wishing to further explore this offer are invited to phone 689-4161 for an appointment.  
\*\*\*\*\*

The Flu Vaccine is now available in the Brady Health Center to all faculty, staff, students and spouses. Anyone allergic to chickens, eggs, feathers or if you have a cold is ineligible to take the injection. The cost is \$2.00.  
\*\*\*\*\*

STUDENT WITH A.A. degree in Secretarial Science seeking work approximately 10 hours per week. Call 724-4052.  
\*\*\*\*\*

Student will do any type of yard or house work. Weeding, raking leaves, etc. Call Tim X-2553.  
\*\*\*\*\*

\*\*\*\*\*  
"Auditions for private voice instruction for 2nd semester. Call 689-4116 or stop by F.A. room 119.  
\*\*\*\*\*

\*\*\*\*\*  
WANTED—A person to care for one 5 year old. Start on Jan '81. Monday, Wednesday and Fridays 12-4:30. Own transportation desirable. Call 689-5200 5-7 P.M.  
\*\*\*\*\*

Have you submitted the financial aid survey recently mailed to you? If not please do so at your earliest convenience. The information is valuable to the financial aid officers in determining student costs.  
\*\*\*\*\*

\*\*\*\*\*  
FOR SALE: Two Jensen 3-way speakers, excellent condition. \$75 or best offer. Speaker wire included. Call Mark at 689-2667 or 689-8068.  
\*\*\*\*\*

## Personals

\*\*\*\*\*  
To the one on the right: Don't worry about the one on the left, she's busy now. Had a great weekend despite your absence. Will you be resuming your munging this weekend? In the middle.  
\*\*\*\*\*

\*\*\*\*\*  
Feeling down, depressed? Need a friend? Suicide Club meets Wednesdays, 6th floor West-minister. Dues payable in advance.  
\*\*\*\*\*

\*\*\*\*\*  
WET T-SHIRT PARTY. \$40 first-prize to the winner. All female applicants call 689-2667.  
\*\*\*\*\*

\*\*\*\*\*  
F.I.H. - Frostburg will never be the same without me. Solid Skein Harombe!!! The Moor-head.  
\*\*\*\*\*

\*\*\*\*\*  
"DIAMOND DEBBIE" the new addition.  
\*\*\*\*\*

\*\*\*\*\*  
To Whyyy - Why, I'll tell ya why. Got my CPA - 1939 University Suthen Louisianer. My son's a smart feller cuz he haz 14 CB antenners. Go Arctic Cat!! Signed, Your Loving Acctg. students.  
\*\*\*\*\*

\*\*\*\*\*  
Everything is cool, I hope it stays like that! Your tough five.  
\*\*\*\*\*

\*\*\*\*\*  
For confidential pregnancy testing, call 759-5100, Center for Life.  
\*\*\*\*\*

\*\*\*\*\*  
Wm: I really do work... sometimes! LMK  
\*\*\*\*\*

\*\*\*\*\*  
Watch this space for upcoming details.  
\*\*\*\*\*

\*\*\*\*\*  
Hiya Virg!  
\*\*\*\*\*

\*\*\*\*\*  
CLS: Feel better... soon! LMK  
\*\*\*\*\*  
CLUE TO WORD QUIZ ON PAGE 7. All of the words on the upper list are correct (all acceptable spellings) and the lower list is incorrectly spelled words.  
\*\*\*\*\*  
Cousin Jimmy,  
I sent you a case of the "Good Stuff." (Red)  
\*\*\*\*\*

Rusty (Son of Bubba)  
\*\*\*\*\*  
Drip,  
How's the Lady next door?  
\*\*\*\*\*  
Drizzle  
\*\*\*\*\*

\*\*\*\*\*  
Brother Jim,  
Brother John has found a job, teaching 2's in Charm City.  
\*\*\*\*\*

\*\*\*\*\*  
Toad,  
Nelstone and Sharrri have gotten the green light for next October.  
\*\*\*\*\*

\*\*\*\*\*  
JL,  
Stopped by to see Mombo and Bagdad on 11/2—the fence is still down and there's a chair missing from the Living Room.  
\*\*\*\*\*

\*\*\*\*\*  
What was Ethel Mertz's (I Love Lucy) maiden name? Tell me, Box 890.  
\*\*\*\*\*

\*\*\*\*\*  
Who won the election for proth-anotary in Pennsylvania yesterday? Tell me, Box 890.  
\*\*\*\*\*

\*\*\*\*\*  
How many self-portraits did Rembrandt van Rijn paint? Tell me, Box 890.  
\*\*\*\*\*

Submit  
Your:

Poetry-  
Art Work-  
Short Stories-  
Photos-  
to:

Bittersweet  
Lane Center  
Box 34  
or  
Dunkle Hall  
Room 131  
Deadline:  
February  
15, 1981

## Inter-Hall Council Presents

"Anne and Katie McDonnell"  
In A Coffeehouse Celebration On The Release  
Of Their First Album-  
"Middle Flight"

Friday, Nov. 7 - Lane Center SnackBar  
Admission: 50¢

Albums On Sale In The Lane Center, Cafeteria And Ray's Record Shop

## TIRED OF THE HIGH PRICE OF TEXTBOOKS???

The FSC Business Club will be raffling off \$100 worth of textbooks to some lucky FSC student. Tickets will be sold in the Lane Center and Chesapeake Hall during the month of November, for the low, low price of only 50¢! The offer will be good for the Spring 1981 semester only.

JB'S  
SALOON

Nightly Entertainment

THURSDAY  
BANDO  
CROSSING

FRIDAY &  
SATURDAY  
MOUNTAIN  
JOHN

SUNDAY  
KATHY GEER

NEXT THURSDAY  
STRAY GATORS

FRIDAY  
Happy Hours:  
4 to 6 p.m.  
Anne & Katie  
RAW BAR

ED MASON'S  
1890  
RESTAURANT  
U.S. 48 1 Mile East  
of Cumberland  
Phone 722-6155