

State-To-Date

VOL. 30, NO. 9

FROSTBURG STATE COLLEGE, FROSTBURG, MARYLAND

NOVEMBER 15, 1978

Bobcats blank Hawks 30-0



by Eddie Dolan

Frostburg quarterback Mark Allen threw four touchdown passes and rushed for a team-leading 37 yards to lead the Bobcats to a 30-0 rout of the U. of Maryland - Eastern Shore Hawks. The game took place on Sat., Nov. 11 in Frostburg before a rather large and happy crowd.

Allen's passing heroics set a Frostburg record. Three of his T.D. strikes came in the fourth quarter, when the Bobcats scored 20 points. The Bobcats may have increased their victory margin further, but the referees were forced to end the game with 7 minutes and 32 seconds remaining when a bench-clearing fight broke out in the Frostburg end zone. Previously, UMES had received two penalties for their unsportsmanlike conduct.

The scoring opened with 5:04 remaining in the first period when FSC's Tim Kearny booted a 35 yard field goal. UMES had two good scoring opportunities in the second period. On fourth down and 1 yard to go for a first down, the FSC defense refused to give up the first down. After 11, FSC gained three first downs, but then suffered an interception. Once again UMES drove and attempted to gain a first down on a 4th and 3rd situation but Tim Lucas knocked the ball down in the end zone.

The Hawks made a costly turnover with only 52 seconds remaining in the

first half. They threw an interception to FSC linebacker Kevin Burnett, who raced 64 yards with the ball. On the next play, Allen hit Todd Carey with a 20-yard pass completion, and with Kearny's conversion, the half time score stood at 10-0 to Frostburg.

In the third period, each team sustained a 79-yard drive, but neither could score. FSC had four chances to score from 2 yards out, but failed each time. UMES marched to the FSC 20 as the quarter closed. Lucas intercepted for Frostburg on the first play of the 4th period. Three minutes later, after punting the ball back to UMES, the B'cats recovered a fumble. Allen immediately capitalized on this Hawks error by rifling a perfect pass to speedster Mike Adams, who made the grab and sprinted to the end zone. This 60-yard play put the B'cats in a commanding 17-0 lead.

Less than two minutes after Adams' grab, Allen went to the air again, and found Carey open in the end zone for a 37-yard T.D. play. After taking over possession on their own 28, FSC added yet another score to the delight of the home fans, when Carey received his third touchdown catch on the day, a 15-yarder from Allen. It was on this play that the fighting broke out, and for a minute it appeared that some real danger might be on hand. The frustrated Hawks, who had

(cont. on p. 4)

AM, SWEET VICTORY. Terry Beamer (54), Jocko Pearson (67) and Pete Thomas (44), team up for the tackle, on the way to a 30-0 win.

New Centralized Mail Room Underway

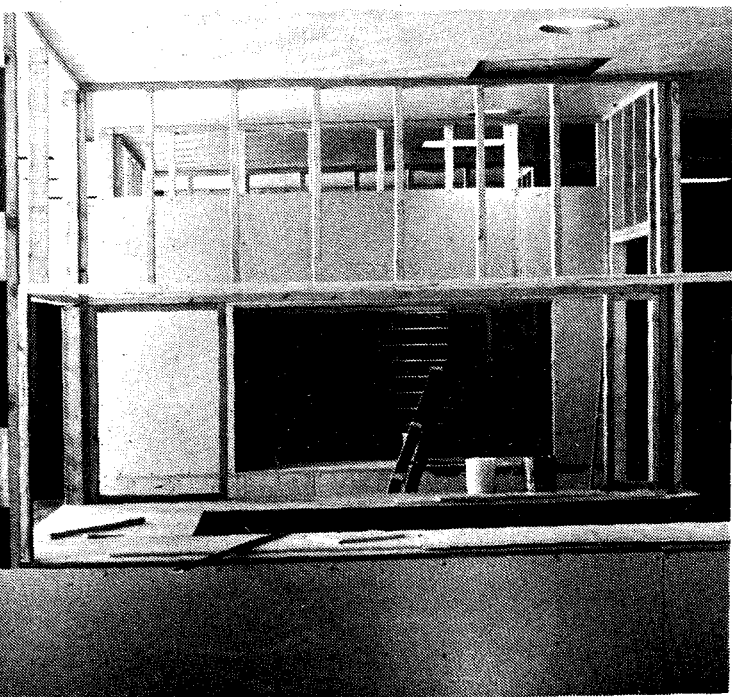
by Beth Green

Upon returning from Christmas vacation, FSC students will begin to receive their mail in the newly constructed centralized mailroom, located on the first floor of Frederick Hall. The "mini post office" besides housing mail, will enable students to pick up certified and insured mail and packages, and will sell stamps, envelopes, post-cards, and laundry tickets. Two students, selected at random, will share a mailbox. Although

this will cut down the individual dormitories' office hours, (one of the main reasons the mailroom was proposed), the D.A.'s (desk attendants) jobs will not be dissolved. Along with one part-time college employee, who will be trained by the post-office, the mailroom will also employ student workers, with D.A.'s getting first priority.

The new mailroom will be convenient for just about everyone. Because of its location (other suggestions were Lane Center and

Chesapeake Hall, but neither offered enough space) most students will already be in the general area at least once or twice daily for meals. The mailroom will have long hours, from 9am to 7 pm, so plenty of opportunities will be available to get that letter from home. It will also be very convenient for the post office, which has not been under any previous type of contract to deliver the mail to each of the 11 dorms, or to get it there at any particular time. (This has been a constant hassle every school year.). Again, this will eliminate the desk attendants having to wait around for the mail to arrive in the morning. Finally, the mailroom will eliminate the frequent hassles of not receiving letters that are incorrectly addressed, or having to go into town to pick up packages or buy stamps. Mail will also be able to be sent anywhere on campus. In the near future the mailroom may be equipped with scales, zip code and address books, and postal rate information, to make it a complete post office. Also included in the mailroom will be large bulletin boards to notify residents of all campus and student activities.



INSIDE THE NEWS...

"Duches of Malfi" page 2

Doug Sahm to appear ... page 3

Booters drop playoff

..... page 4

Greek News page 5

Graduate info...pg. 5



Editorial

Why are we here? Most would agree that our purpose is to get an education. What type of enlightenment we receive is dependent upon us. For example, last week, two students in Cambridge Hall educated themselves and the rest of that dorm - Yes, the sprinkler system does work. Elsewhere on campus we are shown other learning experiences; a bottle when thrown against the pavement will break (any non-believers need only to look at J Lot on a Friday morning), an antenna when pulled hard enough will disengage itself from the car, and a Dry Wall when punched will give way. Of course, all these experiences carry a price: \$7 thousand dollars worth of water damage to Cambridge Hall, \$35 dollars a piece for numerous new tires etc. - But then, who said "quality" education was cheap?

Letter to the Editor

Dear Editor,

I wish to take this opportunity to commend the Alpha Xi Delta pledge class, Lora Burns, Debbie Horan, Patty Libby, Tricia Llewellyn, Kathy Nickle, Mary Russell, Sue Simons, Rose Schmid, Myread Sinigalli, Jill Whedbee, Elisa Wilson led by their pledge trainer, Linda Mercer. This group came to me asking for constructive work activities to fulfill their pledging obligations. I suggested that one contribution to the campus might be to pick up litter around the Lane Center. The Alpha Xi Delta pledge class not only "picked up" on the suggestion but on two separate occasions filled numerous bags of trash which was deposited by thoughtless members of the college community. Unfortunately, following each weekend, the hard work of these girls put in seems to have been wasted. Finally our campus is starting to become an attractive place, why must some people insist on contributing to a "twentieth century landfill" panorama?

Sincerely,
Ron Fautz
Director, LCC

Theatre to present: "Duchess of Malfi"

"The Duchess of Malfi", a tragedy by John Webster, will be presented by the Department of Speech and Theatre on Thursday, Nov. 30; Friday, December 1; and Saturday, December 2. Curtain time is 8:15 p.m. The show is directed by Dr. Jack Vrieze. Designer and technical director is Mr. Edward Thompson. Tickets for "The Duchess of Malfi" will be on sale in the Lane Center box office. Prices are \$3.00 for faculty, administration, and staff, and 50¢ for FSC students. For the opening night of the play, the Lane College Center is offering

a champagne and dessert pre-holiday social at 7:00 p.m. This social was well received last year and requests have been made to repeat the event. Information concerning the pre-holiday social on November 30 can be obtained from the Director of the Lane College Center.

The Duchess of Malfi is a young widow with two brothers, Ferdinand and the Cardinal. The brothers do not wish the Duchess to marry, because they want her title and estate. The Duchess secretly marries Antonio, her steward, and bears him three children.

The Duchess is observed by Bosola, a spy for Ferdinand in the Court. Her deceptions are finally discovered, and Ferdinand resolves to punish her. What follows are scenes of Gothic-type savagery and violence. Considered second only to Shakespeare as a writer in the tragic mode, Webster reveals a strange melancholy and a mind of macabre power in "The Duchess Of Malfi".

Performers of main roles include Keith Hancock, Antonio; Daniel Walker, Delio; Stephen Karukas, Cardinal; Michael Kerins, Bosola; Lee Buchman, Ferdinand; John Mulhern, Silvio; Steven Moffet, Castruccio; Noah Andreen, Roderigo; Joseph Hurley, Grisolan; Susan McDonald, Duchess; Mary Colgan, Cariola; and Denise McCarthy, Julia. Additional cast members are John Winston, Tim Lambert, Paula Shreve; Denise Colbert, Lois Miller, Janet Smith, Cassie McKenzie, Mike Daley, Gary Offenbacher, Ed Cheatham, Davis Bates, Steve Fogle, Paul Leitner, and Rodney Burger.

Bittersweet Plans '79 Edition

The staff of the 1979 edition of BITTERSWEET, the student Arts and Literary magazine, is currently accepting submissions for their March publication. Unlike Arts & Letters, BITTERSWEET will be accepting only student work, including poetry and short stories, as well as original black and white artwork and photography. BITTERSWEET does not require that submissions follow a central theme. The staff encourages the student body to submit their work by the Feb. 15 dead-

line. Materials may be submitted to 131 Dunkle Hall or Box # 34, Lane Center.

BITTERSWEET wishes to remind you that this is your magazine, funded by the Student Association, and its success depends on student involvement. Also, BITTERSWEET offers an exclusive opportunity for students to see their work published. For further information concerning BITTERSWEET contact Kelly Ports, X-7139, Bill Perry 689-2721 or Doug Demars, 131 D.H.

A Disease Called Silence

It's hard for me to believe you have nothing to say about your life. And even harder to believe you have nothing to say about this school and how it is run. What would it take for you to have something to say? Would it take a beer strike, or an administration threat to remove your phones, or shortened library hours, or shortened Lane Center hours, or 45 days of hotdogs for lunch and dinner at Chesapeake?

You tell me these things aren't possible. I tell you to check past issues of State-To-Date over the last two years. You will see the above calamities are not only possible but have

happened (with the exception of 45 days of hotdogs).

You as a student have a right to several things:

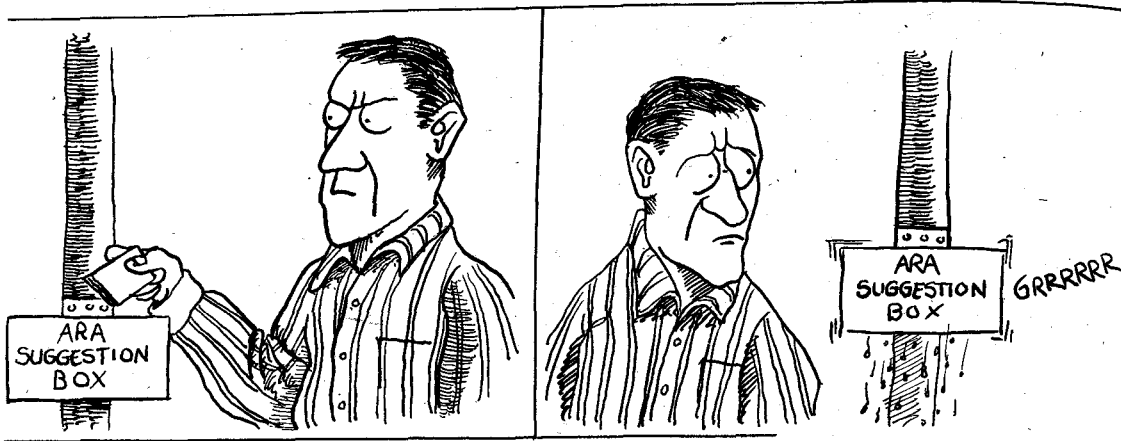
1. The right to an education.
2. The right to reasonable food and shelter.
3. The right to redress for your greivances academically, and non-academic.
4. And the right to an equal voice with the faculty and administration in determining your fate.

What can you do? You have a voice so let it be heard. Arts and Letters is currently looking for contributions for its Fall

and Spring Issues. We will print any piece of reasonably done writing that has something to say about student life or attitudes. Send your contributions to Arts and Letters, Lane Center, Box 215, Frostburg State College.

Reminder:

Library books are due on November 17, 1978. Avoid the \$3.00 late charge for the first week, \$5.00 the second, and \$10.00 the third. Lost books will cost on an average of \$26.00 per item.



MARK
WALLING

Career Placement Pipeline

The College Placement Office has recently received information from the U.S. Dept. of the Interior regarding Summer and Seasonal Employment Opportunities with the National Park Service. The information describes the various jobs available, outlines qualification requirements and specifies where to apply. An area information booklet is included which lists the parks and indicates the approximate numbers and kinds of vacancies each park expects to fill. Applications will be accepted through January 15, 1978. Jobs are highly competitive; however, they are especially interested in attracting well-qualified women and members of minority groups. Stop in the Placement Office for more information--108 Gunter Hall.

State-To-Date is a weekly publication of the students of Frostburg State College. Opinions expressed herein are those of the author and do not necessarily reflect those of the College or subdivision thereof. The staff encourages input and response from the readers. Letters to the Editor must be signed (writer's name withheld upon request) and should not exceed 200 words. Free advertising is available for registered campus organization on a space available basis. Deadlines for articles and letters is 4:00 p.m. Friday prior to publication; deadline for advertisement is Thursday 4:00 p.m. prior to publication. All material submitted automatically becomes the property of State-To-Date. State-To-Date is located in 232 Lane Center, phone 689-4326.

STATE-TO-DATE

Patti Fowler
Editor-in-Chief

Bill Perry
Managing Editor
Brad Livengood
Business Manager



Rick Andrews
Photography Editor
Raymond Bowie
Advisor

Writing Staff: Jim Poppleton, Debbie Israel, Scott Brockway, Lynn Gottermeyer, Laurie Gottschamer.

Production Staff: Kevin Legere, Karen Marks.

Photographers: Stuart Oster, Steve Kerr, Eric Keitz, Barbara Kropp, Dan Beaver.

News Briefs

ATTENTION: All Freshmen who participated in the "Datamation" Medical Information Program over this past summer.

The results of the medical forms which you filled out and the specific information that you requested is available to you in the Health Center, Monday through Friday between the hours of 8:00 a.m. and 10:00 p.m. If you should have questions or need more information please do not hesitate to contact Mr. Patrick Deasy at Ex. 4234.

Brady Health Center will be offering free blood pressure testing and blood pressure information to all members of the college community on a walk-in basis, Thurs., Nov. 30 between the hours of 9:00 a.m. and 4:00 p.m. The procedure is quick, painless and knowing your "numbers" can be most effective in prolonging life and avoiding serious health problems.

Family Planning Services are still available on campus to students this semester. The intake presentation on Monday nights at 6, 7, or 8:00 pm in the Brady Health Center will be offered through Monday evening, November 27. After that date, students will either have to contact their local public health department or wait until the beginning of second semester to become a member of the Family Planning Program.

Very Important Notice To all organizations on campus!!!

If you have a locker in the Lane Center or would like to have one, send at least one representative to a meeting on Monday, November 20, 1978 in the

Lane Center Multi-Use Room 140, at 7:00

Friday, November 17 - 8:15 p.m. - Allegany Community College -

-Dr. Erwin Laszlo, UN Fellow, will present a public address "Options for the Future" which will address especially the role of educators. Dr. Laszlo will also be in "the Loft" at Allegany Community College center from 9:00 - 2:00 Saturday, November 18 to continue discussions on the future of education with interested faculty.

Details of the visit available from Drs. Heckert or LeMay of Frostburg State College; Hazen or Tichenor Allegany Community College; Joan Crawford; Garrett Community College; and John Means, Hagerstown Junior College.

Music Programs

Friday Nov. 17 Pullen 8:15 p.m. Wood Ensembles Recital

Sunday Nov. 19 Pullen 3:15 p.m. Concert Choir

The foreign language department is now making plans for an "international night", to be held next semester. Music, foods and display items of various cultures will be presented. Those interested in participating in this presentation may contact the office of the foreign language department at 689-4287, or 689-4379; or may call 689-2474.

Are you interested in Mathematics? If you have had at least three Math courses, one of which is calculus, you may be eligible to be a member of Kappa Mu Epsilon, Mathematics Honor Society. Come and find out more about K.M.E. at an informational meeting on Tuesday November 28 at 7:00 in 202 Dunkle Hall. Refreshments will be served just after the drawing for the calculator raffle.

Doug Sahm To Appear At New Maryland Theatre

Bob Dylan, Dr. John, David Bromberg, Doug Sahm..... Doug Sahm? Who's Doug Sahm?

Even though he's put out "Doug Sahm and Band" on which Dylan, Bromberg, and the Dr. played in the band, Doug Sahm's story is a paradoxical one. If you asked a random group of people about the "1&1 equals 4", most of them would look at you as if you were crazy. Few would be able to tell you that it is a collector's item valued at over \$30.00.

What makes a single album worth over \$30.00? It takes the kind of magic that comes from being dedicated to the music, not just money.

From the time he was five years old, Doug Sahm knew he was going to be a rock and roll man. Fortunately for us, the five year old that sang in a San Antonio radio station contest in 1946 decided to make a career out of music.

By the time he was 6 1/2

Sahm was playing a triple neck Fender steel guitar, fiddle, lead guitar and mandolin, and under the name of Little Doug, he sat in on sessions with country greats Webb Pierce, Faron Young, and Hank Thompson. Doug had an offer to go to the Grand Ole Opry, but his mother's firm hand kept him in school... He was only nine at the time.

In 1965 the Sir Douglas quintet was formed. Augie Meyer, the last member to join the group, brought with him a British sound (which was just becoming big in America) and five months later, "She's About A Mover" became a national hit. An appearance on Hullabaloo seemed to have them primed for bigger things, but lack of organized road exposure kept the group from the fame they most surely would otherwise have had. A song recorded on their first album "Mendocino", explains, "Lawd I'm Just A Country Boy In This Great Big Freaky City".

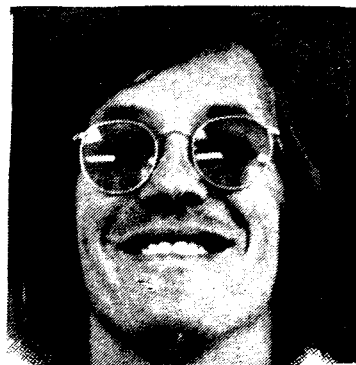
But being nome was a disguised blessing. There was time, time to write and record not just your average material, but some genuine classics. In between recording sessions there were a few brief road trips with The Rolling Stones, Grateful Dead, Beach Boys, James Brown and others. Through it all, Doug

planet Mercury - look low in the southwest about 5:30 p.m. for a bright star like object.

Do you think astronomers are pulling the public's leg when they mention black holes? If so, come to the Frostburg State College Planetarium on Tuesday night at 7:30 pm or on Sunday at 2:30 pm to see our program on black holes. Free to the general public.

Sahm has been as consistent and true to his music as you can ask an artist to be. As another of the many originals says, "You Never Get Too Big And You Sure Don't Get Too Heavy That You Don't Have To Stop And Pay Some Dues Sometime."

The Doug Sahm Dynamism that brought Bob Dylan, Dr. John, et.al. together on one album has been constantly balanced by his country boy charm making for a special magnetism that Doug Sahm fans know all about.



doug sah
and
the sir douglas band

Doug Sahm is Texas' most accomplished and versatile rock musician of the last two decades. He has performed with such names as Bob Dylan, Dave Bromberg, Dr. John and many others.

**SUN. NOV. 19th
NEW MARYLAND
THEATRE**

Tickets \$5 \$6 Box Seats \$7
Tickets Available At
Sound Unlimited, LaVale Plaza
and at the door

Wake up...

by Bill Murray, Jr.

UP! Those are the bells of Alpha alerting you that it is once again time to open your eyes- open your eyes to the culture and history of the Black race. This is sixth in a series of articles submitted by the Mu Upsilon Chapter of Alpha Phi Alpha Fraternity, Inc., designed to enlighten the FSC community to the contributions of the Black race to mankind. It is hoped that through this new know-

ledge, the ignorance causing racial prejudice and hatred will be cancelled out and thereby rid the FSC community and the community of mankind of all aspects of racism forever.

WILMA RUDOLPH

On June 23, 1940, in Bethlehem, Tennessee, a gifted Black athlete was born. Any indication of young Wilma Rudolph's athletic ability were darkened however, for at an early age she suffered an attack of double pneumonia and scarlet fever which left her with the use of only her right leg. Daily massages administered by the members of her family along with prayer enabled young Wilma to progress to the point where she could walk with the use of a special left shoe and a

leg brace. Further therapy and faith saw her soon playing basketball with her brothers in the family's back yard.

After leading her high school basketball team to the state championship, Wilma enrolled in the Tennessee State University in 1957. That same year, she began to set a number of women's track records, and she is probably most responsible for the building of that school's excellent reputation in women's track. In 1960, in Rome Italy, Ms. Wilma Rudolph the woman who had been unable to walk without braces at age 11, became the first American woman to win three Olympic gold medals and was hailed as the "World's Fastest Woman." Wake up everybody.

Booters Drop Playoff Overtime Match

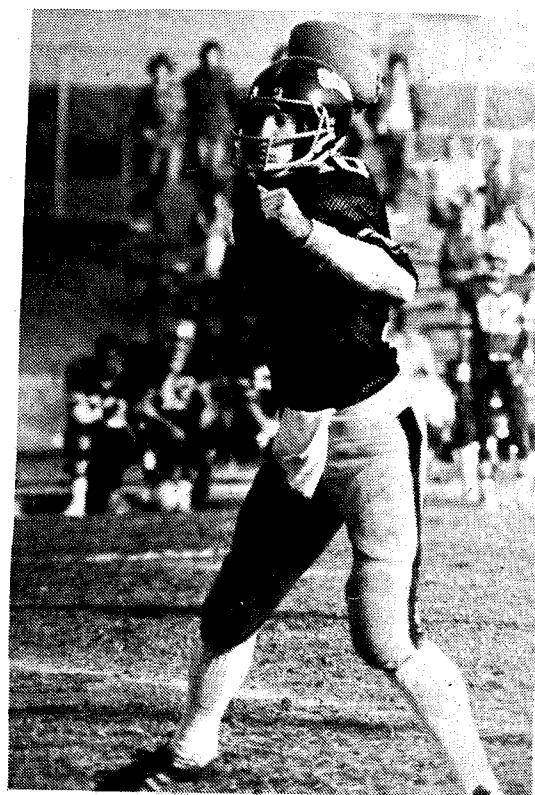
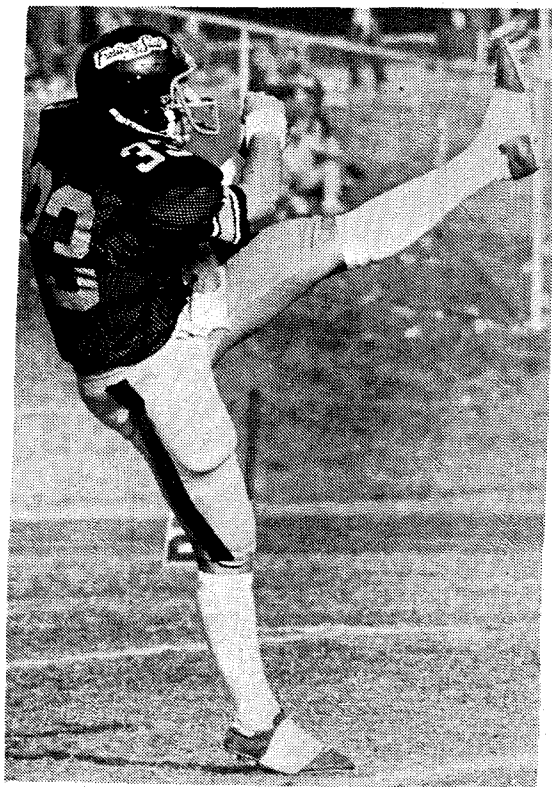
by Eddie Dolan

The FSC Soccer Bobcats received a playoff bid to the Eastern Collegiate Athletic Conference play-offs and entered the single-elimination series with hopes of taking the crown. After taking a 1-0 lead early in the second half on an unassisted goal by Roy Lee, the B'cats appeared to be on their way. But a goal by Dennis Dowd of opponent Franklin & Marshall with only 1:17 remaining in the contest tied the score and sent the game into overtime. Franklin & Marshall seemed to have the momentum as the teams took the field in the overtime period. Glenn Stuart of F&M quickly ended the contest with a clean goal to end

the contest. Both F&M goals were assisted by Rory O'Connell.

Slippery Rock became the eventual series champion with victories over UMBC and F&M. Several B'cat players noted that they defeated Slippery Rock, 4-0, earlier in the season.

The B'cats closed out their fine season with a 9-3-2 record. Dennis Johnson led the team in scoring with 11 goals and 3 assists; followed by John Thomas with 7 goals and 2 assists. Goal keepers Sam Ianni and C. Byron Moore had decent seasons in the net for the Bobcats.



Rugby Thumps Mounties

by Kevin Brooks

It's one of the hardest hitting games this year, the Frostburg Rugby Club put on an impressive performance to destroy Mt. St. Mary's by a score of 22-0. Frostburg's scoring started late in the first half when Mark Riley brought the "Golden Shower" close to scoring range, with a picture perfect 30 yard blast. The "Golden Shower" put their first points up soon after when Bill Sexton passed to John "Simp" Redmond for the only score of the half. Walt Winn put up the extra points making the score 6-0. In

the second half, Geoff Kabel plowed over the goal line for the second score of the day for the "Shower." Winn again put the points up to make it a 12-0 lead. Mark "Animal" Miller put the frosting on the cake with two consecutive try's, thus humiliating a good Mt. St. Mary's team. The final score being 22-0 increased the "A" team's record to 6-2-1. The final contest is next weekend with the University of Maryland. The game will be at Maryland so if your going home why not Support the Rugby Club and be there when Frostburg defeats Maryland!



(Upper left) Brett Quinn, punting for the Bobcats.

(Upper right) Mark Allen, fires one into the defensive secondary.

(Left) Dave DeVore, making the tackle.

(Below) Mike Hast, going up the middle after the ball.

Football

(continued from page 1)

been humiliated the previous week (54-0), lost their cool, but the officials straightened things out, and called the game.

The Bobcats did what they had to do this game: they held their turnovers down. They lost only one fumble and one interception. FSC accumulated 17 first downs to 14 for UMES, while also gaining 267 yds. in total offense compared with 237 for the Hawks. Bill Bonner and Dave DeVore led the defense with 3 quarterback sacks a piece. Kevin Burnett was named the FSC defensive player of the game, while Allen and Carey received the offensive honors. The victory left the Bobcats with a final seasons record of 3 wins and 7 losses.

Womens Box Lacrosse

All women interested in participating in Frostburg State Colleges First Indoor Box Lacrosse Tournament please pick up a roster in the lower lobby of the Physical Education Center. The league is being run by Joyce McDonough (a graduate assistant for the education department), and Dave Buhler (a graduate assistant for the physical education department).

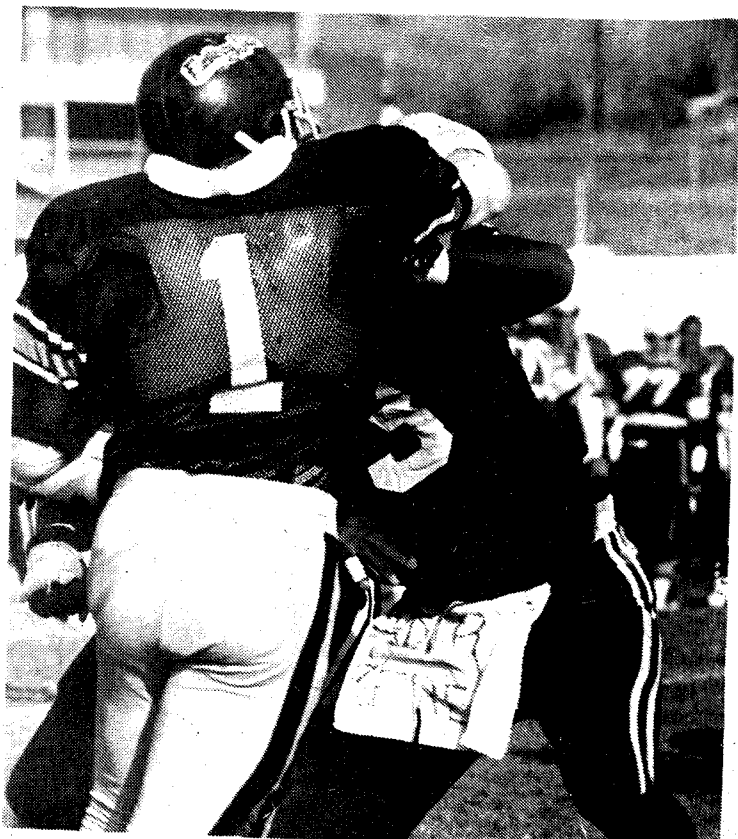
The games will consist of two twenty-minute halves with four players from each team playing at a given time. Each team is allowed to carry a total of seven players. Not more than four of these players may consist of varsity players.

More information is available on the Intramural Bulletin Board or in the Intramural Office.

Officials are needed to officiate these games. If you are interested, please notify Dave Buhler in the Intramural Office in the Physical Education Center.

Dance Along With Kappa

Kappa Zeta Chi reminds all students to come and join in the fun during the First Annual "Dance Along With Kappa to Your Hearts Content". To be held at the Frostburg National Guard Armory, the Marathon will begin 6:30 p.m. Friday November 17- and continue through Saturday until 6:30 p.m. For more information call 689-1172, 724-4011. Proceeds will benefit the community services of the Western Md. Heart Association and Kappa Zeta Chi.



Greek News

Alpha Xi Delta

Alpha Xi Delta is sponsoring a drive to collect aluminum cans. Boxes for the cans are located in the trash rooms in all dorms. We appreciate everyone's participation in this drive.

For sorority philanthropy, the sister's of Alpha Xi are donating food & clothes to needy families in the Frostburg area.

Alpha Xi Delta pledge class, the "Buzzin Dozen", held a campus clean up last week.

Lambda Phi Delta

Our pledges, for their community project, went to Memorial Hospital in Cumberland and entertained the children for Halloween. The pledges also sponsored Ice Cream Night, Thurs. Nov. 9th at Chesapeake Hall. Every Sunday morning 2 sisters take care of the nursery at the Presbyterian Church on Broadway. For Thanksgiving Day, we are making food baskets for shut-ins and the elderly in Frostburg. We are also sponsoring Thanksgiving Dinner at Chesapeake Hall one Thurs. Nov. 16. Get psyched for a great meal! Friday night Nov. 17th we are having a Blow out at the Eagles Club on Main Street.

Delta Phi Omega Paper Drive

The brothers of Delta Phi Omega are sponsoring a school wide Paper Drive. A portion of the proceeds will benefit community charities, while the remainder of the money will go into the treasury for future considerations. Anyone interested in participating may bring their old newspapers to the

Theta Delta Pi

Celebrate New Year's Early! Dance, dance, the Lane Center Multi-Use room, 9:00 - 1:00. Admission is \$1.00. Win door prizes!! Contests!! All are welcome. Sponsored by Theta Delta Pi sorority.

Delta Alpha Iota

These 1978 pledges became Sisters on Sun. Oct. 29.

Rhonda Behrens, Diane Coppola, Kathy De' Atley, Cheryl Griffin, Mary Haspert, Carol Linton, Anne McVey, Donna Neil, Carol Schwartz, Cathy Trovinger, and Patty True.

Kappa Zeta Chi

It is the honor of Kappa Zeta Chi Fraternity to announce the induction of six new members:

Russel Black - Lacrosse
Dick Brown - Rugby
Bo LeRoy - Soccer

Mike Marion - Lacrosse
Doug Raymond - Lacrosse
Phil Schwaab - Lacrosse
Pledging began Sept. 24 and after six weeks of activities which included making paddles for the brothers, signs for athletic events and various other activities, they were inducted over informally on Nov. 5th. Kappa is sponsoring a dance marathon to be held on Nov. 17th, beginning at 6:30 p.m. and continuing for 24 hours, at the National Guard Armory. Kappa extends proud congratulations to each of its new members.

vacant lot located at the corner of Colleg Ave. & Centre St. Wed. Nov. 15 between the hours of 7:30 a.m. and 1:00 p.m. Sat. Nov. 18 will be the second and final day of pick-ups. Papers may be brought to the same location between the hours of 10:00 a.m. and 3:00 p.m. Your co-operation and support would be greatly appreciated.

Pledging: Unforgettable Experience

by Dave Green

Pledging for the Fall '78 pledge classes have already ended, or soon will be. Pledges will soon become sisters and brothers of their respective sororities and Fraternities.

It is an experience that they will carry with them for the rest of their lives. Pledging on the most part

lasts from 6 to 8 weeks, more or less. Pledge classes come in all numbers, from 12 Alpha Zeta pledges and 20 TKE pledges to 5 Sig Taus. You have you singing Lambda's and your Stepp'n Omega's, the Greenies of AOX, and the "Comeback Kids" the TKE's, and don't forget

(cont. on p. 6)

GRADUATE/PROFESSIONAL SCHOOL INFORMATION AND RECRUITMENT PROGRAM

West Virginia University
Thursday, November 30, 1978

The Cooperative Graduate School Information and Recruitment Program has been established as a cooperative program by Bethany College, Davis and Elkins College, Fairmont State College, Frostburg State College, Salem College, Waynesburg College, West Virginia University and West Virginia Wesleyan College so that students might meet with graduate schools. The program will be held in the Mountainlair (Student Union) Ballroom during the hours of 8:30 a.m. through 4:00 p.m.

The following graduate schools will be participating in the program:

ASHBURY THEOLOGICAL SEMINARY, Wilmore, Kentucky

- Master of Divinity

BABSON COLLEGE, Babson park, Massachusetts

- Recruiting for MBA program

BOWLING GREEN STATE UNIVERSITY, Bowling Green, Ohio

- Recruiting for MBA program in Mgt. Info. Systems; 3.0 GPA and 500 GMAT score
- Law School, Medians for last year 3.25 and 575 LSAT

CAPITAL UNIVERSITY, Columbus, Ohio

CARNEGIE-MELLON UNIVERSITY, Pittsburgh, Pa. School of Urban & Public Affairs

- Recruiting for MS, 1 yr. differential Calculus during college, 3.0 GPA - will consider others

CASE WESTERN RESERVE UNIVERSITY, Cleveland, Ohio

- Recruiting for full-time MBA /MSM Program

CLARKSON COLLEGE OF TECHNOLOGY, Potsdam, N.Y.

- Recruiting for Chemistry and Chemical Engineering grad. program

DUKE DIVINITY SCHOOL, Durham, N.C.

- Recruiting for Master of Divinity, Master of Religious Ed.

UNIVERSITY OF KENTUCKY, Lexington, Ky.

- Recruiting for all Graduate programs

MIAMA UNIVERSITY, Oxford, Ohio

- All Graduate Programs esp. Minority Students

OLD DOMINION UNIVERSITY, Norfolk, Va.

- Recruiting for all Graduate programs

UNIVERSITY OF PITTSBURGH, Pittsburgh, Pa.

- Master's Degree in Administration of Justice

RUTGER UNIVERSITY SCHOOL OF LAW, Camden, N.J.

- Recruiting for law Program Only

UNIVERSITY OF SOUTH ALABAMA, Mobile, Ala.

- Recruiting for Grad. Program in basic Medical Sciences
Accept Students at end of Jr. Yr.

UNION THEOLOGICAL SEMINARY, Richmond, Va.

- Recruiting for Master of Divinity, Dr. of Ministry

BOWMAN GRAY SCHOOL OF MEDICINE, WAKE FOREST UNIVERSITY, Winston-Salem, N.C.

- Recruiting for graduate programs in Anatomy, Biochem., Compar. & Exper. Pathology, Microbiology & Immunology, Physiology & Pharmacology

WASHINGTON & LEE SCHOOL OF LAW, Lexington, Va.

- Recruiting for Law Sch. Only

WEST VIRGINIA COLLEGE OF GRADUATE STUDIES, Institute, W. Va.

- Master's Degree in Ed., Psy., Counseling & Guidance, Bus. Adm., Public Adm., Indust. Rel., Engin. Envir. Studies, Info. Systems. All Programs designed for fully employed individuals

WEST VIRGINIA UNIVERSITY, School of Business & Econ. (INDUST. REL.)

- Recruiting for Indust. Rel.

WEST VIRGINIA UNIVERSITY, School of Bus. & Econ.

- Recruiting for MBA

WEST VIRGINIA UNIVERSITY - Public Administration Department

- Recruiting for Public Adm.

CLEVELAND STATE UNIVERSITY, Cleveland, Ohio

Students who wish to attend may sign up and get additional information about the program in the Career Planning and Placement Office in Gunter Hall, room 108. There is no charge for participation. Participants should provide their own transportation. For those unable to do so, the Placement Office will provide transportation for a limited number (max. 30) on a first-come first-served basis.

Pledging

(continued from page 5)

those unforgettable guys, who through diversity, turmoil and basic hard times have stuck together, hung tough, and fought back in the best way they knew how. I am speaking of Sigma Tau Psi. Hats off to the men in Royal Blue.

Pledging is hard, and with your pledge sisters or pledge brothers, work hard together to achieve that common goal of getting into the Frat, or Sorority. Do you think you could do it by yourself? This question has most likely been asked to Debbie Ramstrom a million times. Debbie is the only Theta Delta Pi pledge. She has no pledge sister to turn to to cry or laugh with. The girl is by herself. Only a special person like Debbie could do this task. She is always with a smile on

her face, and pledges harder than anyone this writer has ever seen. Theta Delta Pi is getting a super person in their sorority and should be very proud of her. If you see a girl about 5'4" and about 120 pounds dressed as a Raggedy Ann Doll, take the time to go up to her, give her a kiss on the cheek and say you're wonderful!

Pledging produces such people like Debbie, and other people such as: Duke Mercer, Bunky Scott, Karen Layton, Sue Simons, John Thomas, Bobo LeRoy, and Karl Herwig, just to mention a few. TKE, Omega Psi Phi, Kappa, Sig Tau are already in. The others are soon to follow. Pledging a Greek organization is an unforgettable experience, and to become a Greek is to become a member of a large family, and this family is really together.

Alternative Radio

Anyone the least bit interested in music should be aware of WFNR, Frostburg's on-campus alternative radio source. The station can be located at 640 A.M. in most dorms and at 107.5 on any F.M. cable hookups. WFNR presents a very wide variety of music including progressive, jazz, rock, some Top 40, and music specials focusing on artists or themes. Access to a U.P.I. news teletype provides up to the minute news, sports, and weather for the newscasts at 10:00, 4:00 and 7:00. WFNR plays few commercials (perhaps 3 or 4 during a broadcast day) and operates from 7 a.m. to 2 p.m. Monday through Thursday, 7 a.m. to 5:30 a.m. on Fridays, 10 a.m. to 5:30 a.m. on Saturdays, and 10:00 a.m. to 2:00 p.m. on Sundays. WFNR is run by students and is the platform for your musical tastes. Anyone interested in working for the station can stop by Compton Gym in room CG4.

WFNR is a treat to your ears - indulge in it.

official transcript, and a brief outline of educational and professional experience. Applications should be sent to the program directors: Dr. Derral Cheatwood, Criminal Justice; Dr. Lawrence Downey, Public Administration; and Dr. Catherine Gira, Publication Design.

For additional information, write or call the program director (301-727-6350), or write Dr. Neil Kleinman, Dean of the College of Liberal Arts, University of Baltimore, Charles at Mt. Royal, Baltimore, Md. 21210



...that about 10 billion tons of gold (100 thousand times more than man has managed to mine from the earth) are estimated to be suspended in the oceans of the world, but in concentrations so small it is not economically feasible to attempt to recover the gold?

Attention: Psychology Majors

If you want to take any junior or senior level psychology courses, this information is important to you. All majors and minors, and anyone taking junior or senior-level psychology courses (with a very few exceptions) must first complete Research Methods I (Psychology 201). In order to take Research Methods I, you must first pass the Research Methods I Placement Test. You can take the Placement Test only once each semester. If you fail the test you will be required to complete a remedial program in mathematics under the direction of the head of the mathematics department. The program he selects will depend on how badly you fail the test. The program he selects could include your taking an entire semester course in mathematics. Therefore, you should prepare yourself and pass the test. Merely taking it in hopes of passing it could result in slowing your progress by a whole semester. The date for the fall semester's Placement Test is Thursday November 30 at 4:00 in room 102 of Garrett Hall. PLEASE NOTE

THAT THIS DATE IS CONTRARY TO THAT GIVEN IN THE SPRING 1979 SCHEDULE BOOKLET, MONDAY, JANUARY (AT 4:00 P.M. IS THE TIME AND DATE FOR THE MAKE UP TEST WHICH IS OPEN ONLY TO STUDENTS WITH OFFICIALLY VERIFIED EXCUSES AND TRANSFER STUDENTS. Make-up testing will be allowed only for the most extreme reasons and these must be verified officially. Since the make-up is scheduled for the day before registration, it is in your best interests to take the regular exam on schedule even if it means a serious inconvenience to you. If you take the make-up and fail it, you will automatically be withdrawn from Research Methods I and will not be allowed a retest until the following semester. To help you prepare for the test, you should review mathematics from basic arithmetic through high school algebra, including elementary concepts of geometry (e.g. determination of area, circumference, volume, etc.).

Spades Tournament

Wed., Nov. 29, 1978

in the Lane Center

Room 201

6:00 P.M. - 12:00 P.M.

Registration at

Chesapeake Hall

from

Wed., Nov. 15 - Tues., Nov. 28

\$2.00 per couple (advance)

\$2.50 per couple (at the door)

Prizes

1st prize - 1 case Heineken

2nd prize - 1 case Stroh's

Sponsored By

Phi Mu Alpha Sinfonia



Graduate Scholarships

Graduate scholarships are now available to full-time students enrolling in the University of Baltimore master's degree programs in criminal justice, public administration, or publication design. The scholarships are in the amount of \$500 a semester for each of the three semesters required to complete the degree.

Students who have obtained their bachelor's degree by Jan. 1979 with a

grade point average of 3.0 or higher are invited to apply for the scholarships. Scholarship recipients must take 12 credit hours a semester. At least six credit hours must be taken during the day.

Application deadline for spring 1979 scholarships is Nov. 30th. Spring semester classes begin January 15th.

Applications should submit a letter of support from an academic advisor, an

Boyhood Farming

by Jim Ralston

I was raised on a small farm in Northern Michigan. Forty acres of field and meadow, a swamp (sometimes a pond in spring-time), and a small woods in the back corner. At one time we had five Guernsey milk cows (Molly, Dolly, Polly, Star and Patches), which my Dad milked by hand morning and night. I can still hear the rhythmic sound of the milk splashing against the bottom of the tin buckets, and see my Dad, with his corny farmer's hat on, sitting on the old three-legged milk stool, his head nestled in the cow's flank. Such a quiet and peaceful scene, my Dad milking the cows, me standing across the gutter watching. Every now and then a small smile would come over his face, and he would lift up a teat and squirt me, over which I would squeal in half-protest, half-delight. But all in good fun, both ways. I remember, even as a very little boy, before I was old enough to help with barn chores, my Dad would ask me to come to the barn with him and "help" him milk. It was something we did together. Sometimes very early in

the morning, even before the sun was up.

I lived on this farm for the first thirteen years of my life. We had an enormous garden off the north side of the house. In the spring, I would watch my Dad turn the earth into long neat furrows with our single blade plow. That was precision work, so he would have to do it--though after the garden was plowed, we would attach the drag to the tractor and then it was my turn to work. I don't know when I was ever happier than when I had the real responsibility of driving that tractor.

God, I think--how a kid loves to do real work. I don't mean the piddly stuff, like picking up toys after himself, or cleaning out the garage--but work that matters, work that is a genuine part of the family's being, and well-being, and survival. Like helping plant the garden, or gathering eggs from the hen house, or throwing down hay from the mow for the cows, or picking a few rows of cucumbers from the pickle patch to sell downtown at the pickle station for his very own spending money. Very few of us understand

how children want to be a real part of life--not an extension of life, not a holding action, not little people to be somehow kept separate (protected) until they have the good fortune to grow up into big people. If we did understand that, toys and games would be so much less important than they've become. Relatively speaking, I had very few toys as a kid. I never thought about it.

One of the most satisfying things to do in late summer was to pull a carrot out of the garden and wash it under the outdoor pump and sit down in the shade and eat it. Or climb my favorite apple tree and find the choicest, roundest yellow apple, and eat it as I sat in the boughs and surveyed the summer landscape of my youth fading into autumn. What beautiful empty freedom there was in these small actions. Even today, it makes me wince a little to hear children asking their mothers if they can have an apple out of the refrigerator.

They say that the T.V. children are so much more sophisticated and worldly-wise than the pre-T.V., that they are exposed to so much more, that they "know" so much more. Maybe so. Maybe I don't know what "knowing" is. On my farm, I watched my Dad butcher our steer, (which we had raised from

birth), first stunning it with a sledge hammer blow across the brow, then slitting its throat to bleed it to death, then disemboweling it, etc. I know a little bit about hamburger that Ronald McDonald will never tell. I helped my Dad hatchet the chickens' heads off and hang their bodies upside down from a tree branch. I know something about Sunday chicken dinners with all the stuffings. I witnessed the bull freshen the heifers in the spring, and though I wouldn't exactly call it sex education, there was a kind of knowledge in that too. I found my two pet lambs froze to death in their pen one winter morning, and I learned something about drafts and responsibility. Death and birth are everyday on a farm--they are inescapable. I watched our hog birth her litter of pink little pigs and suckle them. I observed my watermelons freeze fall after fall, before they had a chance to ripen in the short Michigan summer.... I became a most expert apple tree climber. I learned how to detect a dripping maple tree twig in late winter, to provide myself with a sweet treat when there was no nicker. I learned how to ride my horse, Pal, without a saddle, and learned what it felt like to fall off, too.... The thing about my farm is that life was what it was there. It was

close--sometimes painful, sometimes scary -- but close, full of simple things that you remember with your body as much as your mind, like what it feels like to pet a horse's mane, or smells like to walk through a field of fresh mowed hay, or tastes like to strip a pod of peas into your mouth fresh from the garden.

My family moved to Detroit when I was in the eighth grade. I remember selling all the farm animals and giving away the cats (we took our two dogs with us). I remember packing the truck with our belongings, and how empty the house felt that last night we slept inside it. And what a strange glassy look my mother had in her eyes as she wandered around the empty rooms. I remember walking through the fields that last early morning, before the dew was off the grass, saying good-bye in my own way to the swamp, some favorite trees and rock-piles. I was sad, but I wasn't frightened. I was still too young and adventuresome to be scared of change, and I saw the city waiting for me as a new life. Besides, even though I didn't think about it at the time (not in words at least), I never doubted that the farm was as much inside me as out, and though I was now to go on to a new and strange city world, the farm part of me could never be lost.

Marine Officer Programs

The Platoon Leaders Class (PLC) is a program by which a college student can obtain a commission in the United States Marine Corps. It is available to Freshmen, Sophomores, and Juniors.

There are no classes or drills to attend, and no uniforms or dress codes to get involved with during the school year. Training is done during the summer, thus allowing your time to participate in extracurricular activities, work or study. After you have attended summer training, you are eligible to receive \$100.00 a month in tuition assistance.

Upon graduation, you are commissioned as a Second Lieutenant with guaranteed active duty, and if you have applied for flight training and are physically qualified you are guaranteed flight training at Pensacola Florida. Starting salaries range over \$14,300.00, with aviators receiving an extra \$100.00 or more a month.

Give us a call collect at (301) 436-2006/2014 or see Captain Baker in the Student lounge on Campus from the 13 - 17 of November.

The longer that you are in the PLC program the more money you earn when you graduate from college. So consider the challenge and excitement of being an "Officer of Marines".



FIND IT WHERE

FOR SALE: Bass guitar, great condition; \$100.00. Call 689-7847.

CONGRATULATIONS to Jim B. and Debbie I. on their engagement. Good Luck from the gang!

WANTED: Student Photographer to take 35 mm. color slides of campus life. Will pay for services. Preferably some one who is eligible for Federal Work Study. If interested, call Mr. Grab, Residence Life Office, X 4121.

FOR SALE: Ovation Pace maker 12 string guitar with hard case, must sacrifice. \$300. Call Joe 7185.

SKIS- HART- USA's 175cm Ramy bindings, Barrcraft-er poles. Cost \$190. Must sell Sacr. \$80 Call Blaine X-7702

BLACKLIGHT - 18 inch flourescent. Best offer, call Blaine X-7702. 218 Westminster.

FOR SALE: V.W. Parts: tires, seats, glass, etc. Call after 10 p.m. Paul 777-0317.

FREE KITTENS: 4 left Paul 777-0317.

20 DOLLAR REWARD for return of a white hand made sweater with big hood - lost around 2 weeks ago - Lots of sentimental value! Call X-7528 Tricia.

LOST... One small female dog. Part poodle and schanuzer; answers to SPOOKY. Lost on Broadway St. Call 689-1181, Sue Gerhard.

HAPPY 19th Birthday, Pumpkin!

Omega Psi Phi and Phi Beta Sigma have volunteered as spot dancers during Kappa's Dance Marathon with the Heart Fund of W. Md.

PORTABLE WASH machine: Ideal for students, campers and apartment dwellers. Fits counter space 14" square. Washes 1 1/2 lb. load. Shirts, skirts, jeans, perm press, delicates. p.j.'s pillow cases. 30 min. automatic timer. 5 gal. tub, lint trap, drain tap. \$25.00 Call Judie X-4294

WILL TYPE PAPERS: Call Judy X-7223 115 Frederick Hall.

I WILL DO SEWING for a small fee, hem skirts and slacks, replace buttons, repair tears, and light tailoring and alterations. Charlene x7335 (afternoons). 424 Frederick Hall.

LOST: Siberian Husky dog, gray & White, in the area of A&P. Any Info., please contact Steve 689-6922.

TUTORS ARE NEEDED in Physiology of Exercise, Kinesiology and Anatomy and Physiology. Qualified persons please see Rod Warnick, Pullen School 113-6 or call 689-4481.

Tutors are also needed in Physics, Cobol and Fortran. Interested students should see Mike Grady or Bill Grasser in Pullen 112-2 or call 689-4441.

Christian Fellowship meeting - Charismatic. Wed. nights at 7:00 85 Broadway, across from Beall Elementary. Come Bless the LORD!

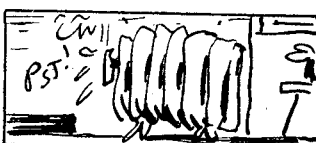
BEGINNING MONDAY, Oct. 23, Homeward Bound will again be in operation. Homeward Bound is a co-operative ride exchange service sponsored by the Inter - Hall Council (IHC) and the Residence Life Office (RLO). If you have a ride to offer or if you need a ride, call 4870. For more information, contact Phil Tripp in the Residence Life Office.

ROOM FOR RENT at \$70 per month, includes all utilities. 130 McCulloh St. Mrs. Greco 689-8593

FOUND: Mens High School Ring in mens bathroom of Dunkle Hall on Wed. Oct. 23. Call X-7823.

Got the munchies???? Every Tuesday from 9:00-11:00 p.m. SOFT HOT PRETZELS, will be sold in the dorms for only .25¢ each. Candy also sold! Sponsored by Theta Delta Pi.

NEEDED: A guitarist or organist from the Baltimore area for job Dec. 29th Pay negotiable. Contact Melody 689-1187.



Steam heat has been around since 1845 when it was first installed in Boston's Eastern Hotel.

Student Artist & Lecture Series

presents

Duane Hanson

Nationally Renowned Sculptor

Lecture

7:30 p.m. --- Thursday
November 16, 1978

Fine Arts Gallery



The sculpture of Duane Hanson portrays ordinary people with a startling illusion of reality. Hanson's subjects are the indistinct and unexceptional people we see in our daily lives—shoppers, tourists, a businessman, a sunbather, a dishwasher, a cement worker. They are not the stiff "heroic" figures one observes at a wax museum. Rather, these realistic sculptures stand, sit or lean against walls in habitual poses. They never smile. They refuse to be engaged.

Hanson uses actual people to make his figures, casting them with bandages and plaster, then removing the molds and filling them with polyester resin, talc and fiberglass. For the final effects he paints the figures with acrylic or oil and clothes them appropriately.

Hanson's art is an American art. Like Whitman's poetry or Copeland's music, it draws its substance from the American people and speaks to us. His figures make no demands on us as they ask for nothing. Yet in their own silent way they powerfully reflect and comment upon the attitudes and values of our society.

CCB PRESENTS THE FIRST ANNUAL SADIE HAWKINS TURNABOUT BLUE JEAN BALL COME DANCE YOUR ASS OFF WITH CLIMB-A-DONKEY FROM BALTIMORE

DATE: Thursday, November 16, 1978

TIME: 8:00 P.M. to 11:30 P.M.

PLACE: Lane College Center Multi-use room

Admission: 5¢ One Nickel

Ticket Sales in the Lane Center Ticket Office

SALES TIMES:

Nov. 6	1:00 P.M. - 4:00 P.M.
Nov. 7	7:00 P.M. - 10:00 P.M.
Nov. 8	1:00 P.M. - 4:00 P.M.
Nov. 9	7:00 P.M. - 10:00 P.M.

500 tickets will be sold on a first come first serve basis. Additional ticket times will be announced if needed.

BLOW — OUT

sponsored by

Lambda Phi Delta

Friday, November 17th

9:00 p.m. - 1:00 a.m.

EAGLES HALL

\$2.50 All you can drink