



CLAS News

March 2008

Volume 1, Number 3

In This Issue

- Chamber Choir Visiting China
- Summer Arts Academy Expands Offerings
- Music Alumnus Honored with Who's FSU Award
- Women's History Month Event Planned
- Welcome New Faculty
- Mass Communication Seeking Original Music
- Geography Hosting Student Research Day
- General Psychology Pilots New Course Format
- WISE Generating Solar and Wind Energy

Visit us on the web

<http://www.frostburg.edu/colleges/clas/index.htm>

Chamber Choir Visiting China

The FSU Chamber Choir will tour Beijing and Changsha (Hunan) China, March 6-14, 2008. The Choir will be performing at the Beijing High School, No. 80, Great Wall, and Temple of Heaven in Beijing. They will perform at the Hunan Normal University and at the Concert Hall in Changsha City Center.

The Chamber Choir recently performed one of the songs they are rehearsing for the trip at the University's Chinese New Year's celebration held at City Place in Frostburg.

"The Chinese New Year's celebration went well – we probably had about 130 people," said biology professor and event organizer Hongqi Li. In addition to the choir's performance, the celebration featured Chinese costumes, art and food.

Summer Arts Academy Expands Offerings

The Savage Mountain Summer Arts Academy will be hosting three new summer institutes for high school students this year – Choir, 2D art, and 3D art. This summer's offerings include returning institutes in Creative Writing, Stage Combat, and Wind Chamber Music as well.

Each is a weeklong summer institute, offering residential and commuter options. Some financial assistance is available.

Additional information and online registration is available on the website at: <http://www.frostburg.edu/savagemtn>.

Music Alumnus Honored with Who's FSU Award

Dr. James Russell Perkins, a 1974 FSU graduate, was presented with a Who's FSU award at the March 2 Friends of Music concert held at the National Cathedral.

Dr. Russell is a music educator, serving over 30 years with Baltimore City Schools. He began his career as a music teacher and also served as Band Director for 12 years for the award winning City College High School band program. While directing the bands at City College, Dr. Russell also served as coordinator for the Band Festivals in Baltimore City.

While teaching, Dr. Russell earned an M.ED. and Ph.D. in Administration and Supervision. He then moved into school administration serving as

Assistant Principal and then Principal.

Dr. Russell remains actively involved in music as a member of the Columbia concert and jazz bands, the Reisterstown Jazz Ensemble, and the Carroll Community College Jazz Band. He is also a charter member of Friends of Music at Frostburg.

CLAS continues to accept nominations for alumni with outstanding career achievements. Nominations should be submitted through your department chair.

Women's History Month Event Celebrates Women's Leadership at FSU

To celebrate Women's History Month, join us for "Celebrating Women's Leadership" on Thurs., March 27 at 6 p.m. in the Lane Center ARMAH at Frostburg State University (FSU). This event is sponsored by the J. Glenn Beall, Jr., Institute for Public Affairs; the Leadership Studies Minor program; the Women's Studies Minor program; the Political Science Department; the History Department; and the Communication Studies Department. Light refreshments will be served.

The event will feature Beverly Byron, former Congresswoman of Maryland; and Jan Gardner, President of the Frederick County Commission and President of the MD Association of Counties. Bryon and Gardner will offer brief comments about how women's leadership has changed during their lifetimes. Then they will be joined by other invited women leaders and women's history researchers for an interactive discussion about women's past, current, and future leadership.

Other participants include Dawn Lindsey, Allegany County Clerk of the Court; Mary Beth Pirolozzi, Cumberland City councilwoman, executive director of Allegany County United Way, and FSU alumna; Dr. Gregory Wood, assistant professor of History at FSU; and Al Feldstein, local historian and creator of the "Buttons of the Cause" collection. Several FSU female student leaders will also be offering their perspectives during this interactive exchange. The discussion will be highlighted by Youtube clips of women leaders, Feldstein's button collection, and other artifacts from local women's history. Following the discussion, students will have the opportunity for one-on-one networking with the participants.

For more information, please contact Professor Timothy Magrath, Lecturer of Political Science and Executive Director of the J. Glenn Beall, Jr., Institute for Public Affairs, at 301-687-4080 or tmagrath@frostburg.edu; or Dr. Elesha Ruminski, Assistant Professor of Communication Studies and Co-Coordinator of the Leadership Studies Minor, at 301-687-4480 or elruminski@frostburg.edu.

Welcome New Faculty

The College welcomes two new full-time faculty this semester: Dr. Mary Hogg (Communication Studies) and David Puthoff (Biology).

Dr. Mary Hogg is a temporary full-time faculty member with CMST this spring. Dr. Hogg earned B.A., M.A., and Ph.D. degrees from the University

of Iowa and has extensive full-time faculty experience at Eastern Illinois University and Eastern Michigan University.

Dr. David Puthoff joined the Department of Biology in January as a first-year Assistant Professor in Plant Physiology/Cell Biology. Dr. Puthoff received his Bachelor's degree in molecular genetics from The Ohio State University and his Ph.D. in Botany from the University of California Riverside. He comes to FSU most recently from the University of Maryland, College Park where he served as a research associate and University of Maryland University College and Georgetown University as an adjunct faculty member. Dr. Puthoff has settled in Frostburg with his wife and two children.

Mass Communication Seeking Original Music

The Department of Communication's MCOM 465 Music Promotions and Production class will be collecting original music for inclusion in its 5th Annual Mind Culture Original Music CD. The students in the class will be creating the advertising and promotional materials for this event. After the music is obtained the class will decide which songs will be included in the CD and then they will begin to record and/or master the music. The culmination of the class is a live concert to be held Thursday, May 8th from 7:00 - 11:00pm in the ARMAH. For more information please contact Dr. John Lombardi at 301-687-4146 or jlombardi@frostburg.edu.

Geography to Host Student Research Day

The Department of Geography will be hosting Student Research Day on Friday, April 4. This year's theme will be Sustainability: The Role of Geography. The purpose of this conference is to provide students a forum for presenting their research in geography. The main activities will include research paper and poster presentations by undergraduate and graduate students (faculty may co-author papers) relating to geography. Awards will be given to the best papers entered in the Student Paper Competition. Other activities include a plenary speaker, general refreshments, a social on Thursday night preceding the meeting hosted by Gamma Theta Upsilon (GTU), and an optional fieldtrip organized by FSU's Geography Club on Saturday following the meeting. Employers are also invited to present displays and conduct interviews.

Additional information, conference schedule, and registration material can be found at

<http://www.frostburg.edu/dept/geog/StudentResearchDay.htm>.

General Psychology Pilots New Course Format

The Psychology Department, as part of the USM's Maryland Redesign Course Initiative, has been working with the officials from the National Center for Academic Transformation (NCAT), officials from USM, and colleagues from other institutions who are associated with the redesign initiative. Two redesigned sections of General Psychology are now being offered in addition to two traditionally taught sections. The redesign permits us to collect data each week about student performance and aspects of the course that allow instructors and undergraduate learning assistants to reach out to struggling students and make adjustments as

needed. In addition, a new course and certificate program have been approved by FSU for implementation this fall. The new course provides credit to advanced psychology students in their role as undergraduate learning assistants in the redesign General Psychology course. The new certificate program provides these same students with opportunities to learn about peer leadership in psychology. Finally, the Psychology Department is planning for at least one campus-wide workshop this semester. This workshop is for any department interested in possibly redesigning one of their introductory-level high enrollment courses or for any instructor interested in course redesign or in discovering new technology and ancillaries from publishers that can enhance student learning. The workshop will include a guest speaker and the date/time will be announced soon.

WISE Generating Wind and Solar Energy

The Wind-Solar Energy (WISE) demonstration system has been generating electricity since June 8, 2007. However, the system started to operate as intended in early September after tower replacement and grid connection were completed. The generation and power quality data has been collected both for the solar and wind portion of the system since September 1st. Daily average generation for each month from September to February is shown in Figure 1.

In September and October solar energy was dominant. Starting from November wind energy became more significant. The chart clearly shows that wind and solar components of the system complement each other to make the total energy approximately constant through the seasonal changes.

Figure 2 shows a normalized chart for a hypothetical system with 1-kW solar and 1-kW wind power installed at the same location as WISE. The daily energy need in a typical single family house is between 10 – 20-kWh/day. This can give an idea about how much solar and/or wind power would be needed to completely supply a house. The size of the solar and wind components may be optimized based on the available resources at a given location.

For updated data and more information, please visit <http://www.frostburg.edu/renewable>.

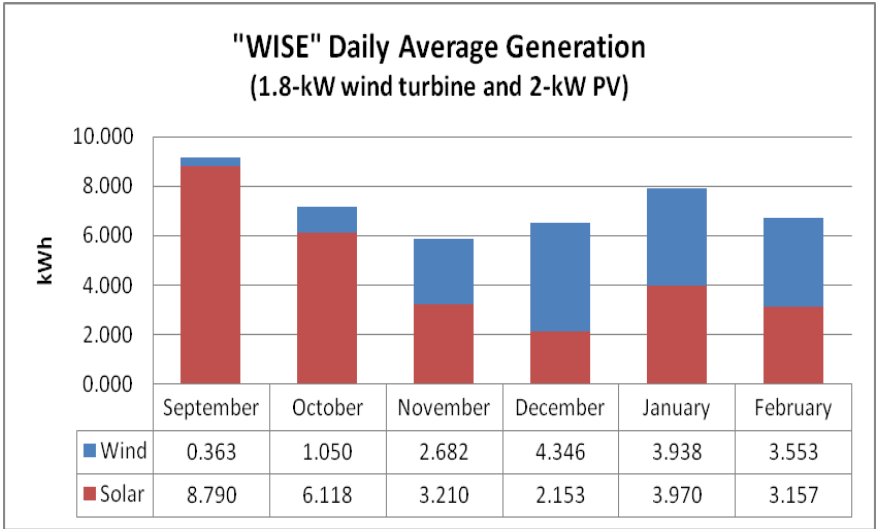


Figure 1 Energy generated per day by the 3.8-kW hybrid system

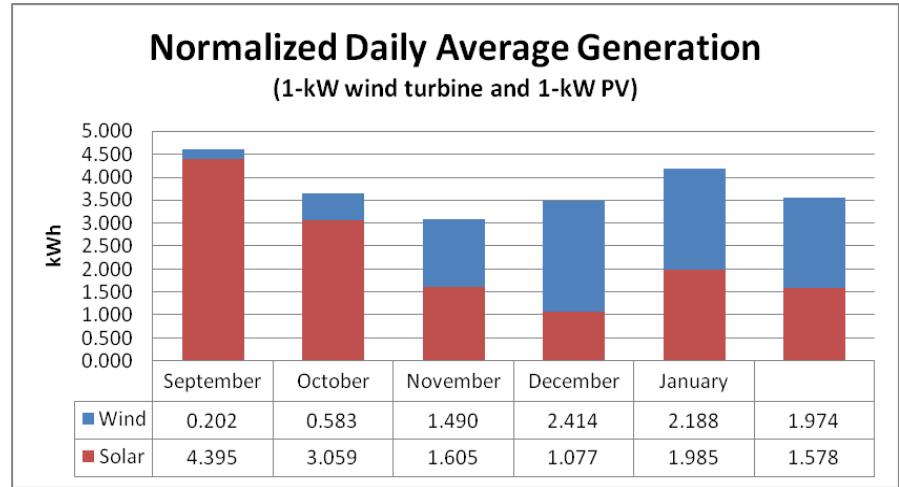


Figure 2 Normalized daily generation per kW installed power of solar and wind components