



A shared recital given by senior Stephanie Durham, trumpeter, and junior Joshua Kahn, percussionist

## Stephanie Durham

In partial fulfillment of the requirements for the Bachelor of Arts in Music Education

## Joshua Kahn

In partial fulfillment of the requirements for the Bachelor of Arts in Music Instrumental Performance

### Assisted by

#### Brass Ensemble

Lee Knier  
Jill Leisten  
Glenn Luedtke

#### Percussion Ensemble

Meghan Rollyson  
Burt Tabet

#### From the studios of

Professor Lee Knier  
Professor Eric Shuster

#### Accompanied by

Professor Susan Zimmer

Saturday, November 23, 2013  
Holloway Hall, Great Hall, 4 p.m.

Salisbury  
UNIVERSITY  
[www.salisbury.edu](http://www.salisbury.edu)



# PROGRAM

Trumpet Tune ..... John Stanley  
(1713 - 1786)

Stephanie Durham, trumpet

Three Dances for Solo Snare Drum ..... Warren Benson  
(1924 - 2005)

I. *Cretan Dance*

II. *Fox Trot*

III. *Fandango*

Josh Kahn, snare drum

Prelude I for Four Timpani ..... Christopher Deane  
(b. 1957)

Josh Kahn, timpani

A Trumpeter's Lullaby ..... Leroy Anderson  
(1908 - 1975)

Stephanie Durham, trumpet

The Offering ..... Michael Burritt  
(b. 1968)

Josh Kahn, marimba

*Etude No. 8* from Portraits for Drum Set ..... Anthony Cirone  
(b. 1941), Arr. Jeff Redlawsk

Josh Kahn, drum set

English Suite ..... R. Bernard Fitzgerald  
(1911 - 2004)

I. *Prelude*

II. *Aria*

III. *Pastoral*

IV. *Andante*

V. *Finale*

Stephanie Durham, trumpet

Bridging the World ..... Tobias Broström  
(b. 1978)

Josh Kahn, vibraphone and percussion

Meghan Rollyson and Burt Tabet, marimba and percussion

*Two Ayres for Cornetts & Sagbuts* from Courtly Masquing Ayre ..... John Adson  
(1587 - 1640)

Stephanie Durham, flugel horn and Josh Kahn, trombone  
Brass Ensemble

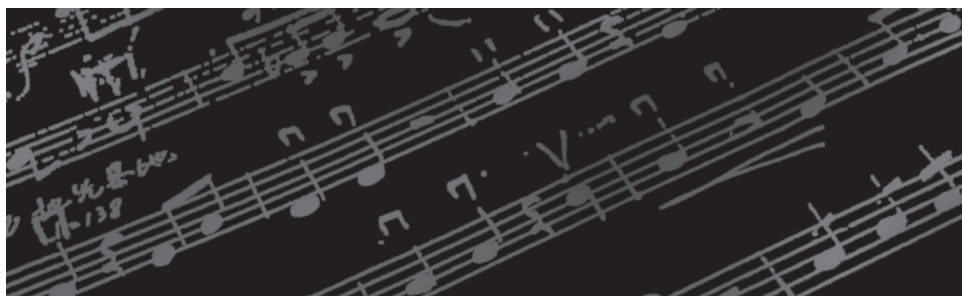


**Durham and Kahn Recital**  
**Saturday, November 23, 2013**  
**Holloway Hall, Great Hall**  
**4 p.m.**

## **MUSICIAN BIOGRAPHIES**

**Stephanie Durham** is a music education major at Salisbury University. She has played the trumpet since her beginning band class in the fourth grade at Hurlock Elementary. During her time in high school at North Dorchester (Hurlock, MD), she was taught by Michael Hughes in the concert, marching and jazz bands. During her tenure at Salisbury University she has worked diligently on developing competency on many instruments including piano and vocal studies as well as her primary focus on trumpet. Stephanie has performed in the Salisbury Concert Band, Big Band, World Drum Ensemble and University Chorale at the University. After her graduation in May 2014, she hopes to work as a music educator in Salisbury or the surrounding area.

**Josh Kahn** is a music performance major at Salisbury University. He played guitar and violin prior to concentrating his efforts on drum kit at the age of 10. At the age of 14, he began studying percussion. While attending Sherwood High School (Sandy Spring, MD), Josh was active in the jazz and concert bands and their Rock and Roll Revival productions under the musical direction of Alex Silverbook and Bill Evans. His principal instructors include Danny Bain, Joseph McIntyre (principal timpanist of the Maryland Symphony Orchestra), Charles Stier, Ted Nichols and Eric Shuster. Josh has performed in ensembles at SU including the Salisbury Symphony Orchestra, Concert Band, Big Band, World Drum Ensemble and Percussion Ensemble. He also has participated as an orchestra member in SU's theatrical productions *Camelot* and *The Magic Flute*. Josh is currently playing with the SU Percussion Ensemble and playing bass trombone in the SU Concert Band. He hopes to become a freelance musician and instructor upon his graduation in 2015.



# ACKNOWLEDGEMENTS

**Dr. Janet Dudley-Eshbach**, *President*

**Dr. Diane D. Allen**, *Provost & Senior Vice President of Academic Affairs*

**Mrs. Martha N. Fulton & the late Charles R. Fulton**

**Dr. Maarten Pereboom**, *Dean, Fulton School of Liberal Arts*

**Dr. William M. Folger**, *Chair, Department of Music*

**Brooke Church**, *Administrative Assistant II, Department of Music*

**Martha Mancuso**, *Office Assistant, Department of Music*

If you would like to make a donation to support other performances like this one, please make your check payable to the Performing Arts Fund, specifying the organization in the memo line and mail in care of the Salisbury University Foundation, Inc. at P.O. Box 2655, Salisbury MD 21802.

Please call 410-543-6385 for information regarding upcoming Department of Music performances.

For more information about our academic program, please visit us on the Web at [www.salisbury.edu/musicdept](http://www.salisbury.edu/musicdept).

## **Department of Music Fulton School of Liberal Arts**

Salisbury University

1101 Camden Avenue, Salisbury, MD 21801

Phone: 410-543-6385

Fax: 410-548-3002

E-mail: [wmfolger@salisbury.edu](mailto:wmfolger@salisbury.edu)

Thank you for attending our performance. The audience plays an integral part in the success of our program. As an involved audience member, please take a few minutes to read this friendly reminder on concert etiquette.

### **A Few Helpful Reminders of How to Be an Involved Audience Member**

- Please arrive early to ensure that you will have a seat.
- Please turn off your cell phone instead of just silencing it so you will not be tempted to text during the performance. Untimely cell phone interruptions during a performance disrupt the performers and the other audience members, please be mindful of others.
- Please remain in your seat during the performance. If you must leave the concert hall, please wait until intermission. If it is an emergency, please try to leave during the applause.
- Please respect the performers by staying seated for the entire performance.
- As an involved audience member, it is polite to clap at the entrance of the performers.
- It is polite to save quiet whispering or talking, if necessary, between songs, as opposed to during a performance.

*Ideas adapted from Concert Etiquette Tips from NAJME's Teacher Success Kit.*