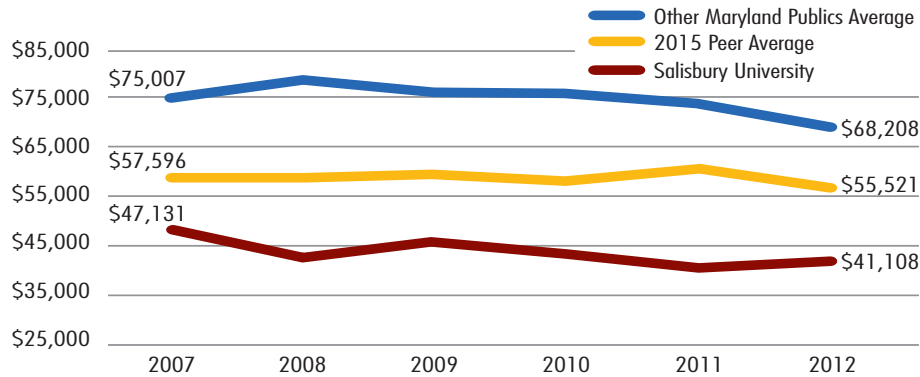


Funding Guideline Presentation to the Council of University System Presidents

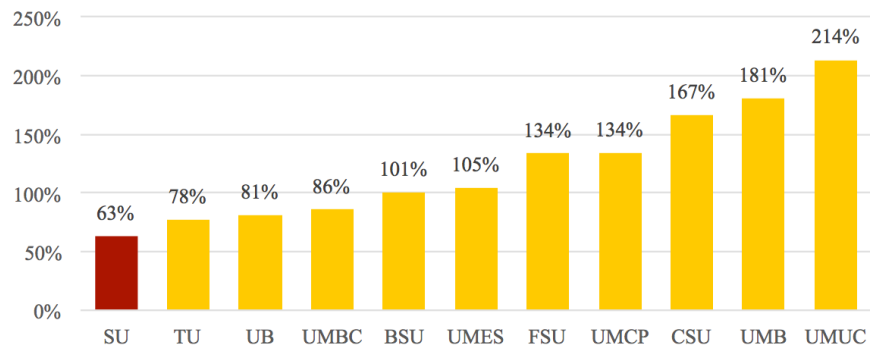


2007-2012 Average Education and Related Costs Per Degree



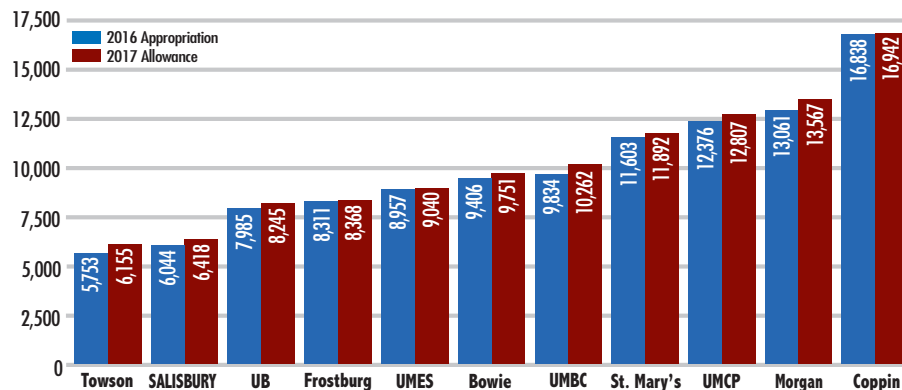
Source: Delta Cost Project - utilizing data from IPEDS Database from 2007 to present

2014 Percentage of State Appropriations' Benchmark Achieved



Source: USM Dashboard Indicators

State General Fund Appropriation (not including tuition and fees)



Source: 2017 Governor's Budget Book

Funding Guideline Presentation to the Council of University System Presidents

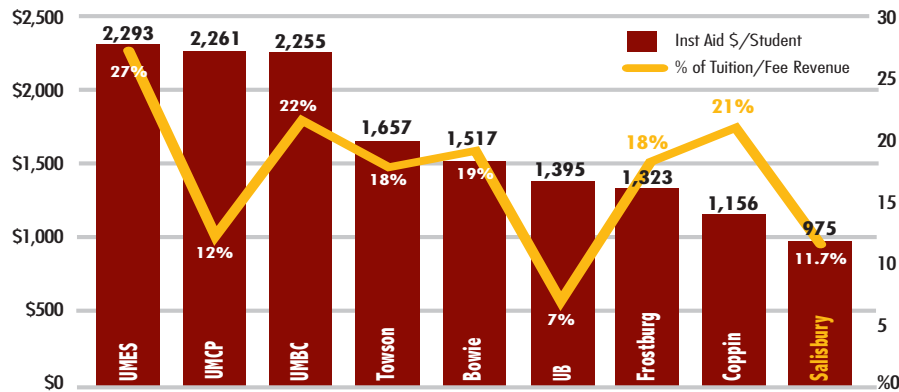


Education and General Revenue per FTES Public Four-Year Institutions

	2012	2013	2014	2015	Working 2016	Adjusted 2017
UM, Baltimore	69,143	73,223	74,161	79,932	84,452	86,374
UMCP	31,431	32,303	34,425	35,984	37,165	38,389
St. Mary's	24,874	22,945	23,420	23,611	28,214	27,213
UB	21,422	21,626	22,182	23,509	24,572	24,528
UMBC	19,178	19,764	20,958	21,534	22,981	23,840
Morgan State	18,183	19,740	20,509	21,088	22,197	23,821
Coppin	19,111	19,278	20,185	22,372	22,842	23,331
Bowie	15,316	15,870	16,179	16,832	18,240	18,495
Frostburg	14,657	14,857	15,217	16,036	16,825	17,492
UMES	16,068	16,122	17,001	17,964	17,464	17,211
Towson	14,680	14,531	14,815	15,576	16,253	16,744
Salisbury	12,441	13,181	13,786	14,765	15,332	16,297
UMUC	14,846	14,421	13,843	12,716	12,980	13,302
Average	\$20,033	\$20,658	\$21,450	\$21,881	\$22,742	\$23,431

Source: Department of Legislative Services; Higher Education Fiscal 2017 Budget Overview

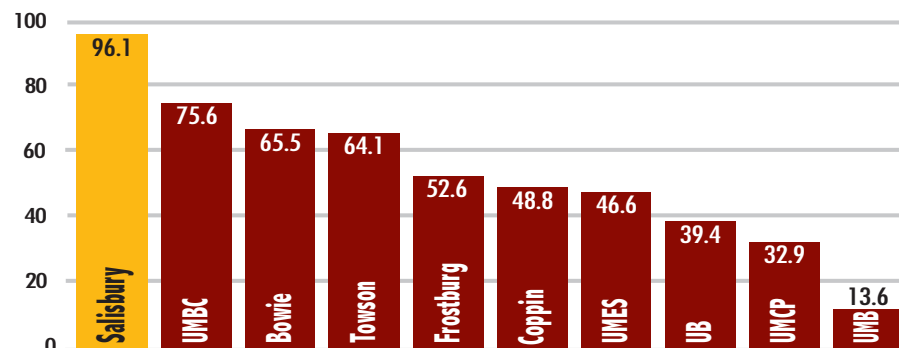
Institutional Aid Per Student (FY2014)



Includes institutional grants, institutional scholarships, athletic scholarships and private scholarships.

Source: Governor's Budget Books

Number of Students Per Full-Time Staff/Faculty: Academic Support (FY2016)



Source: 2017 Governor's Budget Book