

A background image of a musical score with various notes and staves, rendered in a dark, slightly blurred style.

Department of
Music
Fulton School of Liberal Arts

Salisbury University Jazz Ensembles

Directed by Dr. Jerry Tabor

Featuring

Salisbury University

Percussion Ensemble

Directed by Ted Nichols

Salisbury
UNIVERSITY
www.salisbury.edu



Program to be selected from:

- Elephant Breath**.....Evan Hause
Percussion Ensemble with drum set for multiple instruments and multiple time signatures.
- Bao**.....Manady Keita
Bao is a rhythm and dance from the Toma ethnic group, in the forest region of Guinea around Macenta (south east of Guinea). It is played for young girls at the occasion of a big family event
- Woima**.....Sylvia Franke and Ibro Konate
Woima is the name given to the fetish maker. This rhythm is played by Malinke people of the north-east region of Guinea. It is associated with fetish and magic rituals.
- Soko**.....Manady Keita
The Malinke has handed down these rhythms from the people of Guinea. They are played as children arrive in each village after the announcement of a special celebration.
- Balakulania**.....Sylvia Franke and Ibro Konate
The song is from upper Guinea and the rhythms are played to call the farmers to work in the fields in the early morning
- Just Buckets**.....Brian Justison
Just Buckets is a unusual arrangement of fun rhythms for drywall buckets.

Musicians

Brian Alexander	Mathew Klima	Nyles Sanna-Withers
Gabriella David	Leslie McGovern	Nathaniel Williams
Lisa Hill	Ester Oyenevin	Samantha White
James Higgons	Katie Potvin	Max Young

Celebrating A Decade of Distinction

The Department of Music congratulates Dr. Janet Dudley-Eshbach on her 10th anniversary as President of Salisbury University. In the last 10 years, music performance on our campus has blossomed. Thank you, President Dudley-Eshbach, for championing excellence in music programming for our University and for our community.

JAZZ ENSEMBLES

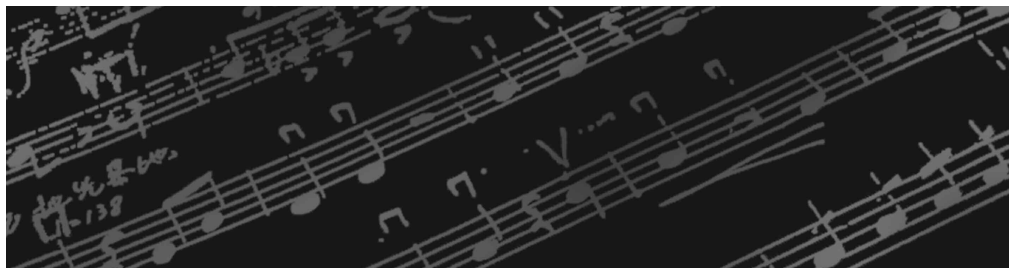
Fall Concert
Thursday, December 9, 2010
7:30 p.m.
Holloway Hall Auditorium

Program to be selected from:

Blue Trian	John Coltrane, arr. Paul Murtha
Don't Be That Way	Benny Goodman, Edgar Sampson, Mitchell Parish, arr. Nelson Riddle, trans. Jon Harpin
El Chupacabra	Mike Dana
Final Answer	Lennie Niehaus
Hey Benny	Mike Dana
I'm Getting Sentimental Over You	Ned Washington, George Bassman, arr. Hall Mooney
Joy Spring	Clifford Brown, arr. Jack Montrose
Relax Max	Al Frisch and Sid Wayne, arr. Rick Stitzel
Ronnie's a Dynamite Lady	Walter Davis Jr., arr. Don Sickler
Sleep Baby Sleep	Daniel Barry
Speakeasy	Daniel Barry
Take Your Pick	Hank Mobley, arr. Don Sickler
Tricky Sticks	Gregory Yasinitsky

Musicians

Carly Ball (vocals)	Andrew Frankel (trombone)
James Burks (alto sax)	Bill Courtney (trombone)
Austin Litz (alto sax)	Robert Beckey (trombone)
Ben Simmons (tenor sax)	Diana Wagner (guitar)
Troy Outten (tenor sax)	Max Young (guitar)
Cody Gregory (bari sax)	Jason Kearse (piano)
Tom Davis (trumpet)	Earle Kirkley (bass)
David Hodges (trumpet)	Tom Simpson (drums)
Stephanie Durham (trumpet)	



ACKNOWLEDGEMENTS

Dr. Janet Dudley-Eshbach, *President*

Mrs. Martha N. Fulton & the late Charles N. Fulton

Dr. Maarten Pereboom, *Dean, Fulton School of Liberal Arts*

Dr. Linda Cockey, *Chair, Department of Music*

Karen Noble, *Program Management Specialist, Department of Music*

Danielle Carboni, *Administrative Assistant, Department of Music*

Matt Hill, *Multimedia Assistant, Event Services*

Ushers | Current Music Majors of the Department of Music

If you would like to make a donation to support other performances like this one, please make your check payable to the Performing Arts Fund, specifying the organization in the memo line and mail in care of the Salisbury University Foundation, Inc. at P.O. Box 2655, Salisbury MD 21802.

Please call 410-543-6385 for information regarding upcoming Department of Music performances.

For more information about our academic program, please visit us on the Web at www.salisbury.edu/musicdept.

Department of Music Fulton School of Liberal Arts

Salisbury University

1101 Camden Avenue, Salisbury, MD 21801

Phone: 410-543-6385 • Fax: 410-548-3002

E-mail: lecockey@salisbury.edu

WSCL 89.5 Classical Music & NPR News / WSDL 90.7 NPR News & Talk



410.543.6895 ~ www.publicradiodelmarva.net

n p r