

A background image of a musical score with various notes and staves, rendered in a dark, monochromatic style.

Department of  
**Music**  
Fulton School of Liberal Arts

# **Vocal Jazz Ensemble**

**William M. Folger, Director**

**Salisbury**  
UNIVERSITY

[www.salisbury.edu](http://www.salisbury.edu)

A black and white image of a musical score with various notes and staves, serving as a background for the title.

# PROGRAM

All of Me .....Seymour Simons and Gerald Marks  
arr. Carl Strommen

Anthony Elliott, tenor

Misty .....Johnny Burke and Erroll Garner  
arr. Russ Robinson

When I Fall In Love .....Edward Heyman and Victor Young  
Abigail Gerrish, alto

Once Upon a Time from *All American* .....Lee Adams and Charles Strouse  
arr. Kirby Shaw

Leah Wilson and Melissa Martin, sopranos

Come Home .....Susan Smith Cohen and Peter Eldridge

Prime Time Blues .....Anders Edenroth

Solo .....  
Melissa Martin, soprano

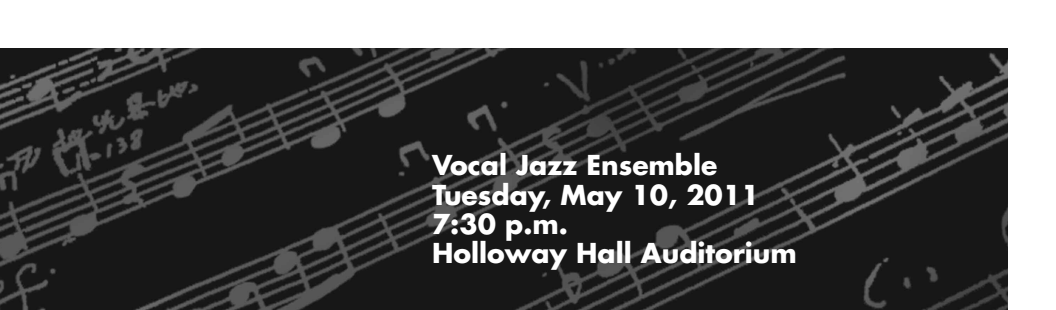
Voicedance V .....Greg Jasperse

A Love That Will Last .....David Foster and Linda Thompson  
Leah Wilson, soprano

Look At Me Now from *The Wild Party* .....Andrew Lippa  
Kimberly Barnhill, alto

Jada Jazz! .....Bob Carlton  
arr. Donald Moore

A Celtic Blessing .....arr. Dave Riley

A black and white image of a musical score with various notes and staves, serving as a background for the event information.

**Vocal Jazz Ensemble**  
**Tuesday, May 10, 2011**  
**7:30 p.m.**  
**Holloway Hall Auditorium**

## **PERSONNEL**

### **Sopranos**

Melissa Martin  
Leah Wilson

### **Altos**

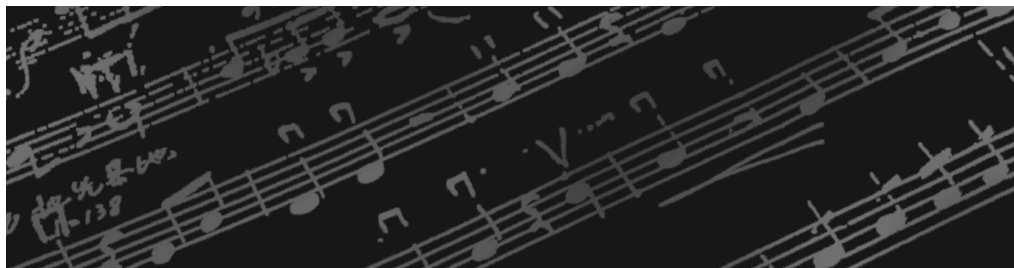
Kimberly Barnhill  
Abigail Gerrish  
Meredith Hazel

### **Tenors**

James Carpenter  
Anthony Elliott

### **Basses**

Stephen Carr  
Eric Russell  
David Thompson



# ACKNOWLEDGEMENTS

**Dr. Janet Dudley-Eshbach**, *President*

**Mrs. Martha N. Fulton & the late Charles N. Fulton**

**Dr. Maarten Pereboom**, *Dean, Fulton School of Liberal Arts*

**Dr. Linda Cockey**, *Chair, Department of Music*

**Matt Hill**, *Coordinator, Event Services / Lighting & Sound*

**Karen Noble**, *Program Management Specialist, Department of Music*

**Danielle Carboni**, *Assistant Program Management Specialist, Department of Music*

**Ushers** | *Current Music Majors of the Department of Music*

If you would like to make a donation to the **William M. Folger Scholarship** or to support other performances like this one, please make your check payable to the **Performing Arts Fund**, specifying the organization in the memo line and mail it in care of the **Salisbury University Foundation, Inc. at P.O. Box 2655, Salisbury, MD 21802**. Please call 410-543-6385 for information regarding upcoming Department of Music performances.

For more information about our academic program, please visit us on the Web at [www.salisbury.edu/musicdept](http://www.salisbury.edu/musicdept).

## **Department of Music Fulton School of Liberal Arts**

Salisbury University

1101 Camden Avenue, Salisbury, MD 21801

Phone: 410-543-6385

Fax: 410-548-3002

E-mail: [lecockey@salisbury.edu](mailto:lecockey@salisbury.edu)

DELMARVA  
PUBLIC  
RADIO

NPR NewsTalk 90.7  
Classical 89.5