

A senior recital given by

# **Amy Morgan**

PIANO

In partial fulfillment of the requirements  
for the Bachelor of Arts in Music,  
Instrumental Performance

From the studio of  
**Dr. Linda Cockey**

**Salisbury**  
UNIVERSITY

[www.salisbury.edu](http://www.salisbury.edu)

A black and white image of a musical score with various notes and staves, serving as a background for the title.

# PROGRAM

## I

Prelude and Fugue in G Major, XV, BWV 884.....Johann Sebastian Bach  
(1685-1750)

## II

Sonata in C Major, K 309 .....Wolfgang Mozart  
(1756-1791)

Allegro con spirito  
Andante un poco adagio  
Rondeau

## Intermission

## III

Romance in F<sup>#</sup> Major, Opus 28, No. 2.....Robert Schumann  
(1810-1856)

Intermezzo in E Major, Opus 116, No. 6.....Johannes Brahms  
(1833-1897)

Nocturne in D<sup>b</sup> Major, Opus 27, No. 2 .....Frederic Chopin  
(1810-1849)

## IV

Andante and Rondo capriccioso, Opus 14.....Felix Mendelssohn  
(1809-1847)



**Amy Morgan**

**PIANO**

**Saturday, November 6, 2010**

**7:30 p.m.**

**Great Hall, Holloway Hall**

## **PROGRAM NOTES**

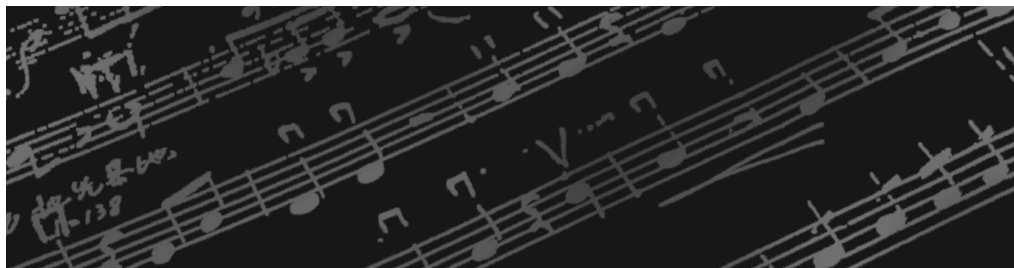
J.S. Bach's Preludes and Fugues are a collection of 24; one for each major and minor key, created to exhibit the newly developed tuning of the Baroque era, equal temperament. Later in the 18th century, European aristocrats popularized the fortepiano and its accompanying sonata form. The styling of Mozart developed, and often improvised, thematic material while highlighting the new textural and dynamic range of the instrument.

One of the most significant composers of the Romantic period, Robert Schumann composed three Romances for his wife, and fellow composer, Clara. It is exemplary of the early 19th century emphasis on self-expression, lyricism and autobiographical art. Of the Schumann circle of artists was Johannes Brahms. An Intermezzo was a form used in opera between vocal solos, now in the Romantic period as an art piece. Also acquainted and admired by the Schumanns and Brahms was Fryeryck Chopin. Nocturnes, written exclusively for the piano, are a type of serenade, meaning "night music." Influenced by Italian opera, the melodies of Chopin are inseparable from their accompaniment.

Finally, Mendelssohn's *Andante and Rondo Capriccioso* shows many influences. From the Romantic era, capriccioso is a term used for a fantasy-like piece, yet it is very structured, maintaining the strict Classical rondo form. As a composer, Mendelssohn was also friends with those of the Schumann circle. He also was greatly responsible for the Bach revival, increasing the popularity of the Baroque master.

## **BIOGRAPHY**

**Amy Morgan** is a piano performance major studying under Dr. Linda Cockey. She lives in Salisbury and is a private piano instructor at B&B Music, locally, and in Camden, DE. Amy also enjoys accompanying other soloists and ensembles, recently working with the Wye Operetta Workshop. Her hopes are to continue teaching, performing and furthering her education.



# ACKNOWLEDGEMENTS

**Dr. Janet Dudley-Eshbach**, *President*

**Mrs. Martha N. Fulton & the late Charles N. Fulton**

**Dr. Maarten Pereboom**, *Dean, Fulton School of Liberal Arts*

**Dr. Linda Cockey**, *Chair, Department of Music*

**Karen Noble**, *Program Management Specialist, Department of Music*

**Danielle Carboni**, *Administrative Assistant, Department of Music*

**Matt Hill**, *Multimedia Assistant, Event Services*

**Ushers** | Current Music Majors of the Department of Music

If you would like to make a donation to support other performances like this one, please make your check payable to the Performing Arts Fund, specifying the organization in the memo line and mail in care of the Salisbury University Foundation, Inc. at P.O. Box 2655, Salisbury MD 21802.

Please call 410-543-6385 for information regarding upcoming Department of Music performances.

For more information about our academic program, please visit us on the Web at [www.salisbury.edu/musicdept](http://www.salisbury.edu/musicdept).

## **Department of Music Fulton School of Liberal Arts**

Salisbury University

1101 Camden Avenue, Salisbury, MD 21801

Phone: 410-543-6385

Fax: 410-548-3002

E-mail: [lecockey@salisbury.edu](mailto:lecockey@salisbury.edu)