

This work is on a Creative Commons Attribution 3.0 Unported (CC BY 3.0) license, <https://creativecommons.org/licenses/by/3.0/>. Access to this work was provided by the University of Maryland, Baltimore County (UMBC) ScholarWorks@UMBC digital repository on the Maryland Shared Open Access (MD-SOAR) platform.

Please provide feedback

Please support the ScholarWorks@UMBC repository by emailing [scholarworks-group@umbc.edu](mailto:scholarworks-group@umbc.edu) and telling us what having access to this work means to you and why it's important to you. Thank you.

von Behren, C. and J.A. Yeakley. Hydrochorous seed dispersal in riparian forests altered by urbanization. *Ecosphere*

## **Appendix S2: Stream stage hydrographs**

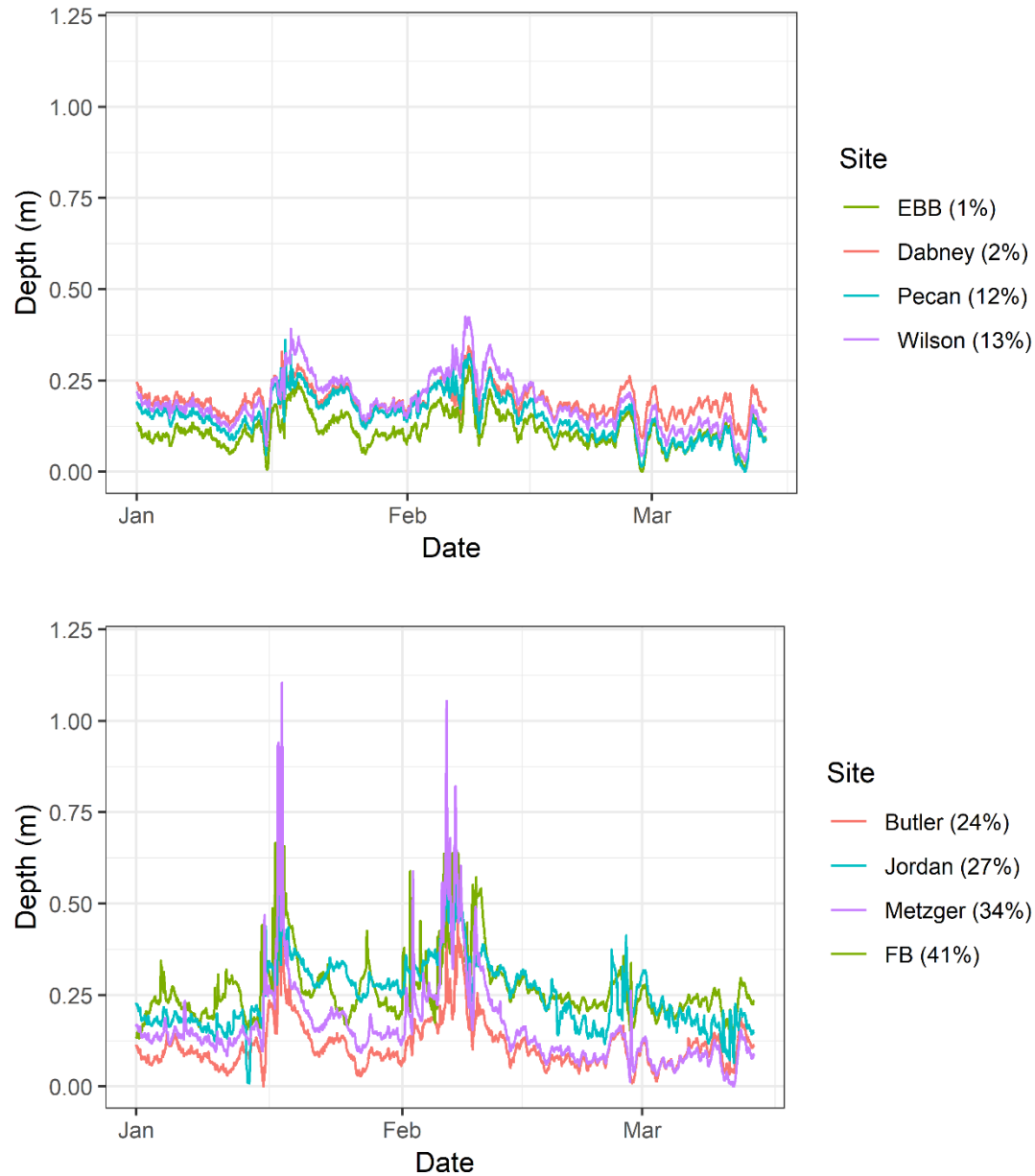


Figure S1: **Stream water level during Win1 (December 2014 – March 2015) in four lower TIA sites (upper graph) and four higher TIA sites (lower graph).** Water level was recorded by data loggers every 15 minutes. Total impervious surface area (TIA) for each stream is indicated in parentheses in the legend. There were no useable data collected from Clackamas (TIA = 8%) during this period.

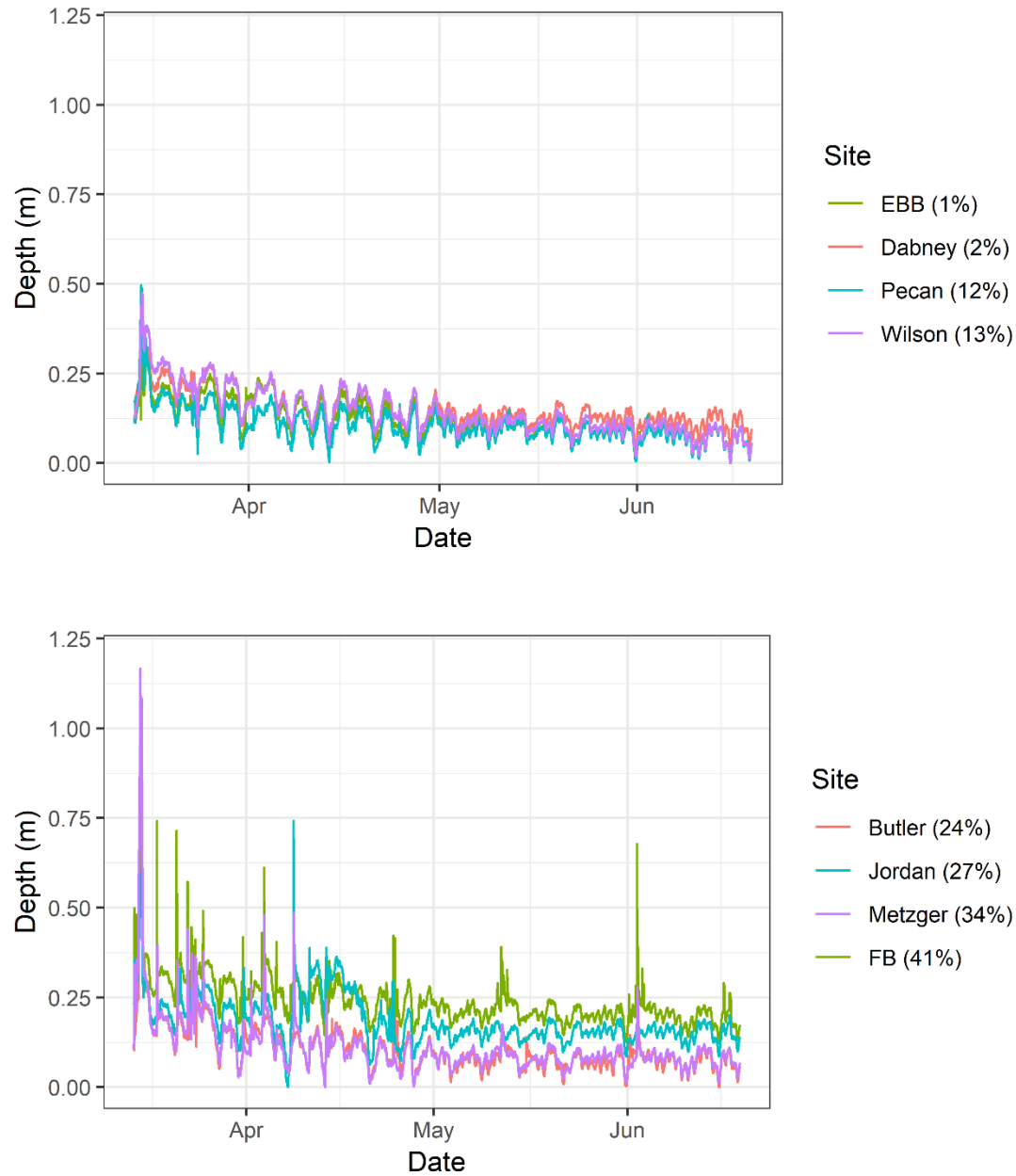


Figure S2: **Stream water level during Spr (March 2015 – July 2015) in four lower TIA sites (upper graph) and four higher TIA sites (lower graph).** Water level was recorded by data loggers every 15 minutes. Total impervious surface area (TIA) for each stream is indicated in parentheses in the legend. There were no useable data collected from Clackamas (TIA = 8%) during this period.

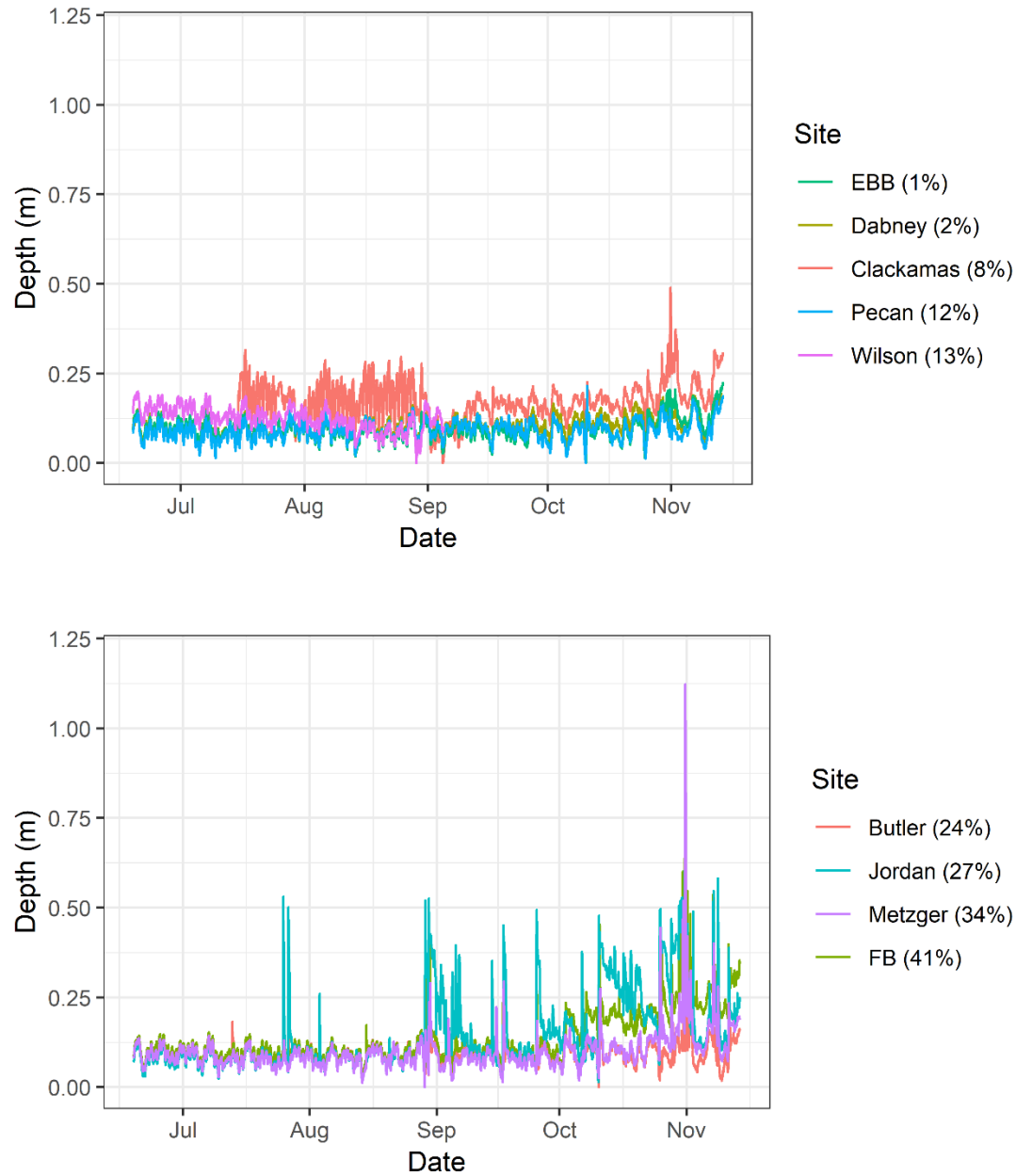
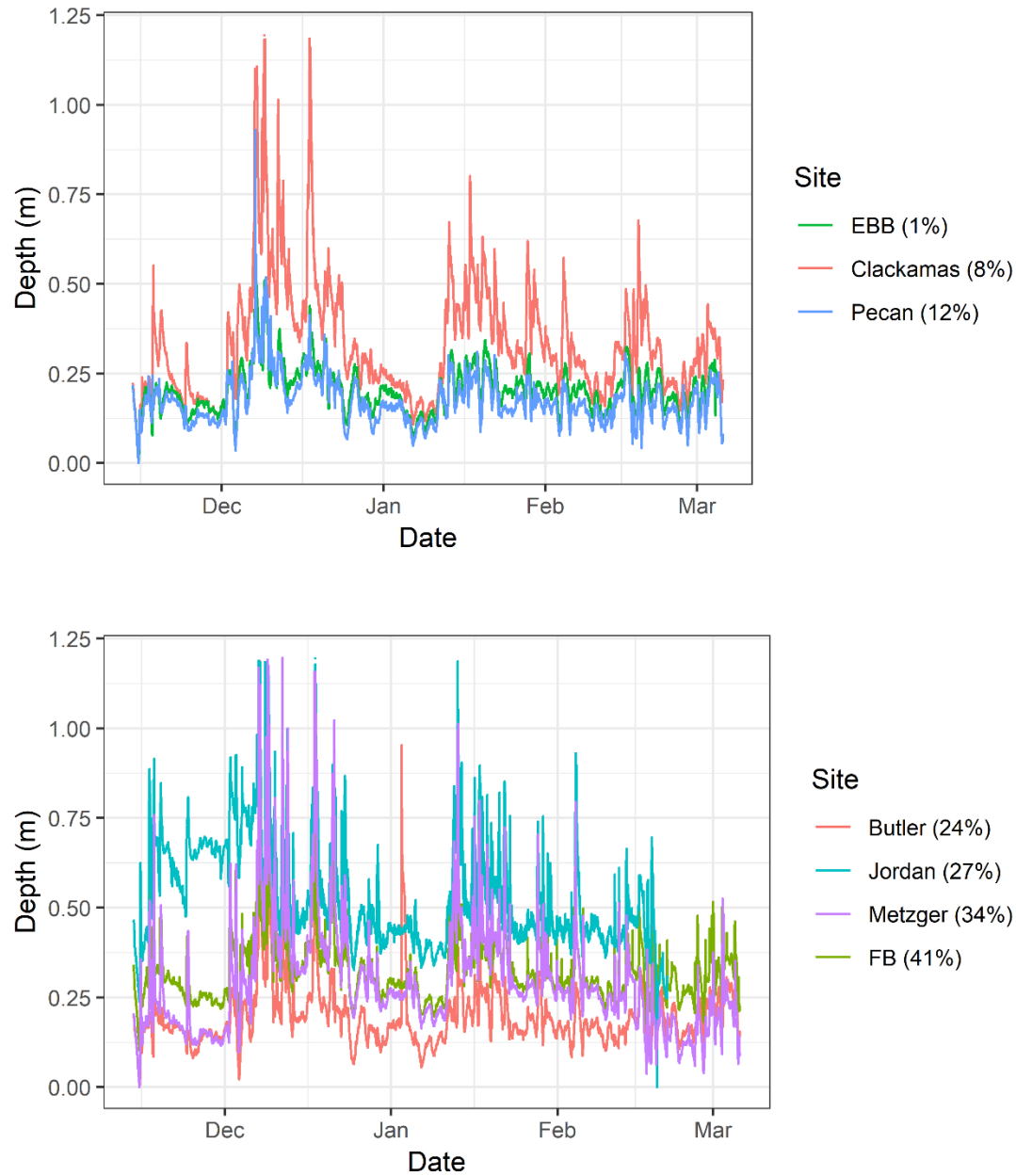


Figure S3: **Stream water level during Sum/Fa (July 2015 – November 2015) in five lower TIA sites (upper graph) and four higher TIA sites (lower graph).** Water level was recorded by data loggers every 15 minutes. Total impervious surface area (TIA) for each stream is indicated in parentheses in the legend.



**Figure S4: Stream water level during Win2 (November 2015 – March 2016) in three lower TIA sites (upper graph) and four higher TIA sites (lower graph).** Water level was recorded by data loggers every 15 minutes. Total impervious surface area (TIA) for each stream is indicated in parentheses in the legend. There were no useable data collected from Dabney (TIA = 2%) or Wilson (TIA = 13%) during this period.