

State-To-Date

Vol. 26, No. 21

FROSTBURG STATE COLLEGE

March 3, 1975

Guild Announces New Program

Dr. Nelson P. Guild, president of Frostburg State College, has announced the development of an Affirmative Action Program which is designed to improve the employment composition of women and minorities at the local college.

In announcing the guidelines of the program, Dr. Guild issued the following statement:

"Frostburg State College is committed to affirmatively assuring equal employment opportunities to current and prospective employees without regard to race, sex, creed, color, age or national origin. In order to promote the full realization of this commitment, I appointed a College Task Force in September, 1974, for the purpose of developing an Affirmative Action Program. As you can well appreciate, the guidelines set forth in the

Affirmative Action Program are meaningless unless all members of the College community, especially those involved in the employee recruitment and selection process, cooperate fully in supporting and implementing the guidelines.

"I consider the Affirmative Action Program an institutional policy of major importance and priority, and I pledge my own support and participation. I hereby appoint Mrs. Pansy Atkinson, director of minority affairs, as the Affirmative Action Coordinator. Also, I am expanding the responsibilities and membership of the Minority Affairs Committee to work on a continuing basis with the Affirmative Action Coordinator on matters relating to the coordination and implementation of Affirmative Ac-

tion measures. In the near future, Mrs. Atkinson and representatives of the Minority Affairs Committee will be meeting with faculty and administrative supervisors to discuss their responsibilities under the Program."

Essential components of the Affirmative Action Program are: the projection of goals and timetables for improving the employment composition of minorities and women on the Frostburg State College personnel force; the specific responsibilities and lines of authority for effective implementation of the Program; the establishment of an on-going mechanism to review and revise all employment procedures to assure that they do not have discriminatory effect and that they aid in attaining employment composition goals; and the development of systems to regularly monitor and measure Program progress.

The program was developed by a task force at the College comprised of the following members: Dr. Michael C. LeMay, head of the political science department; Thomas C. Varella, academic counselor; Mrs. Julia Martin, personnel specialist; Ms. Molly W. Burnham, instructor of English; Ms. Susan Wirth, associate professor of French and Spanish; Ms. Terenda Thomas, a student from Denton, Md.; James J. Mingle, assistant to the president; and Mrs. Atkinson.

English Seminar

There will be a career seminar for all English majors on Tuesday, March 11, at 6:30 P.M. in Lane Center 202. Dr. Helene Baldwin will talk about writing as a career in Washington, Dr. Richard Trask will speak on technical writing and other career opportunities for English and liberal arts graduates, Dr. Pearl Aldrich will discuss teaching opportunities, and Mr. Wayne Carlisle of the Placement Office will tell how to go about applying for and getting a job. This is an important opportunity to find out about teaching jobs and many other different kinds of jobs which English majors qualify for and are even preferred candidates for. All English majors are urged to attend.

McCarthy Seeking New Policy System



photo by Herbo

It was clearly not the type of setting one associates with a residential campaign and all its frantic hand-shaking, aides scurrying to and fro with last minute details and literature, button and decal pushing.

If anything, yesterday's visit to Frostburg State college by former U.S. Senator Eugene McCarthy resembled more a lecture by a touring college history and literature professor, which is what McCarthy is.

In a manner befitting classroom dignity, the tall graying 1968 unsuccessful Democratic presidential candidate from Minnesota outlined the features of his independent campaign for the Presidency in 1976.

The former Senator spent three hours on the FSC campus, speaking to about 500 persons in Compton Auditorium after attending a press conference and reception in his honor.

Today, McCarthy was scheduled to lead an anti-strip mining march thru Charleston, W.Va. today before speaking outside the West Virginia state capitol.

Asked yesterday whether his stand against strip mining had been altered in light of the Mideast oil crunch, McCarthy stated, "No, it hasn't been proved that the return of coal is worth the waste that must be created to reach it by surface methods."

The former Senator, who challenged Lyndon Johnson for the Democratic presidential nomination in 1968, added that one of the reasons for seeking the Presidency next year will be to re-orient the nation into policy matters where none now exist.

Those policies, according to McCarthy, run the gamut of the entire political, social and cultural scope of American life as we know it today.

With his candidacy, he hopes to challenge the present Electoral College

system of naming the President, if elected, while also seeking a redistribution of the country's work load.

"In America today," he said, "five percent of the nation's working force perform 90 percent of the work I believe that by retraining some of that five percent, more room would be made in the economic structure to accommodate more people."

McCarthy would also make corporations and the military-industrial complex more responsive to society.

"The constitution never foresaw the growth of separate entities such as the military and industry being allowed to develop a 'life' outside the democratic framework of government such as they have today," he stated.

McCarthy feels that the restructuring the emphasis, industry could be made to "serve the needs of the people," instead of "dictating what the people need."

By allowing the Defense Department to grown beyond what he believes is adequate protection against an enemy, the military has instituted "wasteful spending projects that rival all others in history."

"Without a war to fight, the Military must justify its huge budgets and does so with outrageous projects," he stated. "One of them, the C17 bomber program, rivals the Great Wall of China and the Egyptian pyramids for wasteful spending."

McCarthy has elected to seek the Presidency as an independent this time, saying that he could be classified neither as a Democrat or Republican.

"Both parties have become frozen in their ideological thinking, and time is long past that other alternatives are offered," he said.

(reprinted from an article by L. Eugene Goodrich, Sunday Times Staff writer, Cumberland Times)

Two Interested Students

The Student Artist and Lecture Committee is looking for two at-large student members. The new committee now composed of four students, two faculty and two administrators will select two more students from those who apply. The rationale for having two at-large students is to include representation on the committee from students who are

not members of S.A., C.C.B. or from student constituencies not already represented. The committee selects cultural and educational performances and lectures for each academic year. If you are interested in serving on the committee, please see Mr. Don Moore, Lane Center or Mr. John Lowe, 219 Lowndes Hall before 4 p.m. Thursday, March 6.

Women's Resource Center

The Women's Resource Center scheduled an exploratory meeting with representatives of area women's organizations to discuss the formation of a coalition of involved women's organizations in Western Maryland and the Tri-State area. The meeting was held on Tuesday, February 25, in the Lane Center.

The Women's Resource Center has been founded by a group of concerned women and men interested in expanding women's freedom of choice to plan their lives; and in improving the quality of life for women and men throughout the world. It has a three-fold purpose of: promoting an awareness on the part of the women of the options available to them in today's society, encouraging the development of each woman to her full potential, and insuring for women equality of rights and opportunities.

The year 1975 has been proclaimed as International Women's Year by the United Nations, the President, the Governors of 28 states (including Maryland, Pennsylvania, and West Virginia). In conjunction with this observance, the Women's Resource Center has scheduled an International Women's Day Luncheon for March 8 at 1:00 p.m. in the Lane Center. Ms. Mary Broadwater, a member of the Maryland Commission on the Status of Women, and Ms. Marguerite Richards, who has long

been active in community affairs, will speak at the luncheon. Additional information about the luncheon may be had by calling Ms. Julia Derezinski at the Women's Resource Center at 689-4375.

James F. DeCarlo, Jr., Professor of Management at FSC and acting Director of the Women's Resource Center says, "We are concerned about the lack of communication between community-oriented women's organizations. There seems to be a woeful lack of knowledge in the community about the existing groups, their purposes and projects as well as a wasteful duplication of efforts and resources."

"The Women's Resource Center sees its role as that of a catalyst," continues Professor DeCarlo. "We can serve as a clearinghouse for women's organizations in order to avoid duplication of community efforts and to foster cooperative efforts. That's what this meeting will deal with. We've tried to invite all area women's groups to send a representative but I'm sure we've missed some. Any group that is concerned and wants to be a part of this exploratory meeting is invited to send a representative."

Any group wanting more info can contact Ms. Derezinski or Professor DeCarlo at the Women's Resource Center at 689-4375. Groups interested in being involved but unable to send a representative to the meeting should contact either of the above.

Letters to the Editor

Dear Editor:

This letter is prompted by the recent appearance of Senator Eugene McCarthy at FSC. We were glad to see that a national figure could include Frostburg as a stop on a busy schedule, because the need for some physical contact with the "outside" political world is definitely needed here. However, we were once again dismayed as we listened to the same old pseudo-liberal content of the senator's talk. In our three years at FSC, there have been no less than three public figures here whose views would place them at the Left of the political spectrum. One may argue with our classification of these politicians, but we seriously doubt that anyone could deny the ideological similarities of men such as Senators Mike Gravel, Edmund Muskie, and Mr. McCarthy, who have all spoken at FSC. Additionally, we now see that Victor Marchetti, who has recently written a current best-seller expose of the CIA, and 1972 Democratic Presidential Nominee George McGovern will be present on the Frostburg campus later this semester.

How about some input from the "other" side? We believe that it is only fair to give equal time to those that would surely rebut the views of McCarthy, et. al. After all, a college education is supposed to include open-mindedness and consideration for all sides of an argument. We would suggest that national figures such as William F. Buckley, Senator James Buckley, Senator Barry Goldwater, and James J. Kilpatrick to name a few, could provide not only alternative ideas, but lively and informative comments that are needed in any political speech. We may be alone in our requests, however, we can't believe that all our fellow students sub-

scribe to the liberal rhetoric of the aforementioned advocates.

Please don't mistake this letter as a criticism of the people and organizations that arrange on-campus speakers--we realize that availability of prospective speakers can be, and is, a restricting factor. We only hope that this letter will inspire others who share our views, to work for a little moderation in the political orientations of politicians and speakers on campus. This is your campus--you pay student fees every year--and you should have a say in who comes to speak to you on your campus. So if you would like to see a change from this continual diet of liberal food for thought, speak up, and be heard.

John Sweet
Tom Taggart Jr.

The following three letters were received by **State-to-Date** for publication. The three letters are correspondences between Mr. Larry Kump and President Guild concerning the college's health services.

Dear President Guild:

On Wednesday, February 12th, in an informal discussion with Dean of Students, Dr. Alice R. Manicur, I was told that it is almost certain that some of the health services offered through Brady Health Center at Frostburg State College will be curtailed and contracted to Sacred Heart Hospital on or about August 1975.

As a result of this change, night services will no longer be provided at Brady Health Center and three (3) nurses will be dismissed from State service.

Although I was assured that this program change will provide "better student health care services" because "this is what the students want," the termination of three (3) faithful college employees is indeed a cruel hardship to impose in these times of job scarcity.

MCEA does not wish to pass judgment nor meddle with

Management's prerogative to structure programs according to internal needs. However, we must respectfully request that this new health program be held in abeyance until such time as the three (3) Brady Health Nurses can be transferred to other State employment within this geographical area.

Any other action would result in severe personal hardship for these nurses.

A prompt response would be appreciated.

Sincerely,
Larry D. Kump
MCEA Field Representative

Dear Mr. Kump:

I received your letter of February 18 yesterday concerning the College's attempts to improve its health services. I shall do my best to respond in a constructive way.

Under Dr. Manicur's leadership, a special committee composed of students, faculty and staff members has been studying the health services offered by the College, the health service needs of our students, and a variety of possible improvements which might be made in the future. That study has proceeded for over two years now and has involved a survey of student opinion on the entire matter.

In addition, the College has given the matter very careful study as to cost involved, benefits derived by students, problems, and prospects for better service.

As a result of these efforts, the College has been discussing the possibility of altering its health service by entering into an agreement with an area hospital and with a group of physicians in order to provide the kind of care which is most needed, when it is needed, at the lowest possible cost to the student and the taxpayer.

As you know, the College has been operating a health service which includes the services of one part-time physician, six full-time nurses, and 24-hour infirmary coverage. In Fiscal 1975, nearly 90 percent of all expenditures for health services have been consumed by the salaries of the staff referred to above. Nearly 79 percent has been accounted for by the salaries of the six nurses. In the last four fiscal years, salaries and wages of infirmary personnel have increased by 43 percent, but appropriations for operating expenses have increased by only 16 percent.

It should be readily apparent that the cost of maintaining the same type of health service as we have had in the past is difficult, if not impossible, to justify in terms of the actual service rendered to a student body which continues to grow. We are now in the second fiscal year of a new era in the College's finances in which General Funds provided by the State are not even sufficient to pay the salaries of employees in funded programs, much less to pay any of the operating expenses in those programs. The College has been taking prudent steps for the last several years to reduce both personnel and operating costs wherever possible in order to slow down the rate of increase at which our students

are taking on the financial burden of their education. We have frozen roomrates and held board rate increases to a minimum, sacrificed needed programs, and effected economies for this purpose. I shall continue to resist fee increases as long as their is continuing indication of the State's unwillingness to accept its rightful burden for financing public higher education in general and the state colleges in particular.

The College has no desire to aggravate the current unemployment situation in this region, nor to place any employee in a position of hardship. By the same token, my conscience will not allow me to defend any existing College program simply on the ground that it keeps people employed. A program must be defended because it provides needed service and is preferable to other alternatives in its effectiveness and economy.

I am very much aware of the faithful service which our nurses have given the College and its students. It is my impression that employment opportunities in nursing may be more evident than in many other fields, although such may not be the case with nurse positions in State government.

In any event, the College has put the nursing staff on notice, some months ago, that any of several positions might be terminated near or at the end of the current fiscal year. There are still a number of details to be worked out before any agreement is signed by the College, and it is difficult to tell now exactly when the change will take place. When all arrangements have been made to the satisfaction of both parties, it will be our intention to implement an agreement as soon as it is practicable. If, by that time, the nurses whose positions have been abolished have not been succeeded in securing other State employment within this geographical area, I do not believe that I could justify a delay in implementation of the agreement for the benefit of the nurses when so much else is at stake for 2,900 students, the health center, and the College's budget.

If you care to discuss this matter further, please let me know.

Sincerely yours,
Nelson P. Guild
President

Dear President Guild:

I read with interest your prompt response to my inquiry of February 18, 1975 regarding the impending dismissal of three College Nurses and proposed restructuring of the Brady Health Center.

In response, I would suggest that in the interest of all concerned, it would be best for your office to schedule a meeting with the Nurses, our Chapter President and myself to further explore this situation, which we feel has been neither adequately researched nor properly implemented.

Space does not permit thorough documentation of the points in question; however, an abbreviated listing follows: 1. The Student Health Care Census of January 1973 was invalid, inaccurate, and not

truly representative of student opinion. 2. On campus, medical care to students will actually be reduced by the proposed change-over.

3. No in-depth on-the-job survey was made of the present health care services.

4. Current nursing employees had no input in suggesting improvement of health care services.

5. The two year survey was made by a hodgepodge group of faculty, staff and students with no expertise in management systems analysis or health care services.

6. The proposed contract with Sacred Heart Hospital (which is physically removed from Frostburg State College by several miles) will result in woefully inadequate emergency medical care to College students.

7. At no time have the Nurses or myself been informed of the total proposal for changing health care services.

8. Six full-time Nurses is not an unreasonable amount of staff to provide 24 hour medical services to 2900 students.

9. Campus time now spent by the College Physician tremendously exceeds the contracted amount.

10. The anticipated lay-off of three Nurses is cruel and arbitrary.

Therefore, for the above reasons and others, MCEA is requesting that the Health Care Services change-over be re-evaluated and, at the very least, continued State employment be guaranteed to the Nurses.

A prompt response would be appreciated.

Sincerely,
Larry D. Kump
MCEA Field Representative

Dear Editor,

This letter is in response to the letter by Jay Aubuchon on the letter addressed to Hildegard.

Although I agree that a letter of satirical comment should be of higher quality than that expressed by Patriots for P.P., criticism of public representatives through the newspaper is a valid form. But who will take the time to read a dry, boring article? Even a poor attempt at humor is more enjoyable to read than something expressed in a less underhanded manner. Secondly, social and political pressure usually force one into either printing less than wanted, or printing it all and leaving the dotted line blank.

To wit:

Whereas, Doug Pransky has interpreted the constitutional phrase "responsible for the successful operation of the S.A." to mean "Le Student Association, c'est moi; and,

Whereas, Doug Pransky is trying to further his personal power and status, as opposed to the power and status of the student body; and,

Whereas, he has accepted his opinion as the student body's on collective bargaining (interpreted as potentially destructive on page six

**How was Russia,
Mary Alice and Joan?
Welcome back!**

STATE-TO-DATE

This paper is a weekly publication of the students of Frostburg State College. Opinions expressed and do not necessarily reflect those of the college or any subdivision thereof. The deadline for articles is 2 p.m. on the Wednesday preceding publication. Anyone may submit an article, but articles should be typed, double-spaced.



Editor-in-Chief---Sandy Swann

Managing Editor---Roy Cool

News---Thurman Frey, Editor;

Douglas Fulton

Penny Friend,

Features---Tom Farrell, Dave Shaffer, Dave Cannon,

Carol Pfeffer

Sports---Debby Maloid, Editor; Linwood Toomer

Art and Photography---Herb Young, Editor; Fred Phelps

Business Manager---Larry Hite

Distribution Manager---Caren Klarman

Advisor---Dr. Paul LaCnance

Le Jeu de Robin et Marion

The musical comedy was not invented on Broadway, as some popular historians seem to think, but was thriving at least seven centuries ago in the time of Adam de la Halle. The French monk and trouvère, or poet-musician, made a name for himself around the middle of the 13th century with risque plays for which he provided words and music, interweaving speech and song in a way that proved to be a precursor of the style known as opera comique.

One of Adam's plays-with-music seems to have survived intact, but it is rarely staged anywhere. However, the old work, "Le Jeu de Robin et Marion," was presented in a brashly witty version on Monday night at St. Stephen's Church on West 69th St. The performing group, the New World Consort, avoided the usual tendency in such ancient works, which is to embalm them in musiological oil.

"The Play of Robin and Marion," a comic pastoral of a kind that was to enjoy a run of several centuries, revolves around the apparently successful (Rosemarie Carminiti) to fight off the advances of a handsome knight (James DeMarse). The young lady prefers a good-natured but cowardly poacher, Robin (William Mount), in the inexplicable way of maidens in these idylls. The dramatic suspense is slight, but the players carry off their singing, dancing, and

rough-housing with such skill and enthusiasm that the performance proved irresistible.

Everyone in the cast--which also included Mary Anne Ballard and Robert Cowart--played several of the old instruments, among them a bagpipe, a psaltery, vielles, shawms and small drums. In what was probably the mode of the day, the play proper was announced by a "street concert" of Adam de la Halle's chansons, rondeaux and jeux-partis, sweetly and stylishly sung by the Consort, and preceded by an anonymous playlet, "The Pilgrim's Play," which was given along with "Le Jeu de Robin et Marion" at Arras in 1289, in what we would now call the French premiere.

Adam de la Halle's "Le Jeu de Robin et Marion" is a delightful entertainment and one of the earliest examples of secular music theater in France--the embryo of opera. Contrasting sharply with the solemn liturgical dramas which were given at the altar, it provides us with insights into life in 13th century France. Its rollicking spirit of chase and its ever-contemporary characters, as shown in the New World Consort's lively revival, make it a valuable addition to our musical and dramatic heritage.

The New World Consort, a group of versatile young musicians under the direction of William Mount, acclaimed for its charming

and authentic performances of early music, has enlisted the assistance of numerous experts in the preparation of this production: in medieval dance, theater history, medieval language and staging. As always, they perform on a large number of medieval instruments, known to have been in use at de la Halle's time.

The dialogue of this reconstruction is in the original 13th century French but knowledge of modern or medieval French will not be required to appreciate such timeless themes as unrequited or triumphant love, pursuits, picnics and shepherd's dances.

Rejecting much of the restraint and exaggerated respect often applied to early works--yet remaining strictly within the framework of medieval theater traditions--the New World Consort under Jeff Bleckner's direction achieves a spirited and humorous presentation that 20th century audiences can respond to directly and with pleasure.

SYNOPSIS

The knight Aubert, riding out to a hunt, discovers Marion alone with her sheep, and attempts to seduce her. She assures him that he is wasting his time, for she can love none but Robin. When he comes in and hears the story, Robin runs off to find the other shepherds for the dual purpose of safety in numbers and a picnic in



Marion's field. The knight returns looking for his lost falcon and is again rebuffed by Marion. At this moment Robin enters carrying the falcon which he has caught and nearly killed, thus giving the knight an excuse to thrash him. Marion makes an ill-advised reappearance in an attempt to save Robin, and is swept off by Aubert, who takes her to a secluded spot and tries to win her favors. For a third time she resists, and now he accepts defeat, walking dejectedly away and out of the play.

With the shepherds all assembled someone proposes the game of "Rois et Roines." In this parody of medieval court life each person is called before the throne and required to answer any question posed by the king, who is thus offered an opportunity to pry into their personal lives and ask questions which will embarrass the women. The game is interrupted when

Gautier notices a wolf running away with one of Marion's sheep. Robin hurries off, snatches the victim--still alive--from the wolf, and brings it back to Marion in triumph. Gautier and Baudon decide to represent Robin's family in consenting to his marriage to Marion, and the play ends with the picnic turning into a celebration of the impending nuptials.

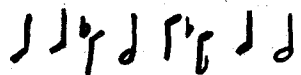
Ball and Chained Gulls

*Like ball and chained gulls,
we cannot leave the beach;
Yesterday we walked,
today we run,
but we never have flown;
Forgive me,
My wings are clipped.*

*Like armor plated doves
we remain on the ground;
Salt on our tails,
weight on our feet
but never will these matter,
Believe me,
soon we will soar.*

Joseph E. Fisher

WFSC is Alive and Well ...



Contrary to unfounded rumors that have been running around campus lately, Frostburg State College does have its own radio station; it is WFSC and can be found at 640 and 1280 on the AM dial. With this semester's goal set at creating a totally "student run" station, WFSC is undergoing many changes. Technicians at the station have instituted a "request line," which is "open" Monday thru Saturday, from ten AM to ten PM. The phone number is 689-7028 or 689-7029.

Recently, four of the top dj's at WFSC (Jim O'Brian, Commander Ray Tiny, Kilgore Trout and Joe Sunshine) were asked several questions pertaining to their personal styles, the purpose of the station, and the future of WFSC. The following answers were received:

Q: What previous musical experience do you have to your credit?

A: Jim O'Brian... "I've been with WFSC for two years... before that I worked with WCUM's 'JR' and Miles Stevens and they gave me a lot of worthwhile pointers on how to relate to a listening audience."

A: Kilgore Trout... "none... but I was in a high school band once."

A: Joe Sunshine... "I've broadcasted for WAER, which is the college station at Syracuse University... beyond that, I've lived on this mania of an earth for almost twenty years, and it has taught me well."

Q: How would you term your "style?"

A: Jim O'Brian... "My style is more of an easy-going type, as compared to others... I realize that I'm not Joe Disc-Jockey.. I know my audience is small and I try to please my audience, even if the only person listening is the janitor in Westminster."

A: Commander Ray Tiny... "Sometimes I'm kinda cool... I enjoy the dj's in Baltimore and try to imitate them."

A: Kilgore Trout... "Random fits me well... variable too."

A: Joe Sunshine... "Real... Frostburg is populated with regular people, and I feel the disc-jockey should be an extension of this regularity... the only style I have is my own, and that's the one I use."

Q: Musically speaking, what do you offer your listeners?

A: Commander Ray Tiny... "Sometimes I'm kinda cool... I enjoy the dj's in Baltimore and try to imitate them."

A: Kilgore Trout... "Random fits me well... variable too."

A: Joe Sunshine... "Real... Frostburg is populated with regular people, and I feel the disc-jockey should be an extension of this regularity... the only style I have is my own, and that's the one I use."

Q: Musically speaking, what do you offer your listeners?

A: Commander Ray Tiny... "Sometimes I'm kinda cool... I enjoy the dj's in Baltimore and try to imitate them."

A: Kilgore Trout... "Random fits me well... variable too."

A: Joe Sunshine... "Real... Frostburg is populated with regular people, and I feel the disc-jockey should be an extension of this regularity... the only style I have is my own, and that's the one I use."

A: Jim O'Brian... "Predominantly top-forty... don't get me wrong, it's not bubble-gum... ya gotta remember my program is in the morning and this softer type music is wanted in the early hours. A top-forty show can be good, if ya keep good stuff playing; by that I mean 'Best of My Love,' by the Eagles, is 'good,' as compared to 'Beach Baby' by... by... whoever it was by. I mean 'Beach Baby' is fine for some audiences, but this isn't jr. high school."

A: Commander Ray Tiny... "soul... I'm into soul... I speak for all the blacks at Frostburg... too much hard rock ain't no good, my people gotta have good soul."

A: Kilgore Trout... "A wide variety of excellent performers, some know, some not so known... then there are those artists that are not too excellent, but I give them a chance just the same... I believe that I'm the only dj in the station's history, to play, 'Sweet Transvestite,' by Tim Curry."

A: Joe Sunshine... "Moods... people have different moods throughout the day, so I gear my shows to those variations... most of my morning stuff is 'Cat Stevensish' but I'll play Hendrix if he's in demand."

A: Commander Ray Tiny... "soul... I'm into soul... I speak for all the blacks at Frostburg... too much hard rock ain't no good, my people gotta have good soul."

A: Kilgore Trout... "A wide variety of excellent performers, some know, some not so known... then there are those artists that are not too excellent, but I give them a chance just the same... I believe that I'm the only dj in the station's history, to play, 'Sweet Transvestite,' by Tim Curry."

A: Joe Sunshine... "Moods... people have different moods throughout the day, so I gear my shows to those variations... most of my morning stuff is 'Cat Stevensish' but I'll play Hendrix if he's in demand."

A: Commander Ray Tiny... "soul... I'm into soul... I speak for all the blacks at Frostburg... too much hard rock ain't no good, my people gotta have good soul."

A: Kilgore Trout... "A wide variety of excellent performers, some know, some not so known... then there are those artists that are not too excellent, but I give them a chance just the same... I believe that I'm the only dj in the station's history, to play, 'Sweet Transvestite,' by Tim Curry."

A: Joe Sunshine... "Moods... people have different moods throughout the day, so I gear my shows to those variations... most of my morning stuff is 'Cat Stevensish' but I'll play Hendrix if he's in demand."

A: Commander Ray Tiny... "soul... I'm into soul... I speak for all the blacks at Frostburg... too much hard rock ain't no good, my people gotta have good soul."

A: Kilgore Trout... "A wide variety of excellent performers, some know, some not so known... then there are those artists that are not too excellent, but I give them a chance just the same... I believe that I'm the only dj in the station's history, to play, 'Sweet Transvestite,' by Tim Curry."

A: Joe Sunshine... "Moods... people have different moods throughout the day, so I gear my shows to those variations... most of my morning stuff is 'Cat Stevensish' but I'll play Hendrix if he's in demand."

A: Commander Ray Tiny... "soul... I'm into soul... I speak for all the blacks at Frostburg... too much hard rock ain't no good, my people gotta have good soul."

A: Kilgore Trout... "A wide variety of excellent performers, some know, some not so known... then there are those artists that are not too excellent, but I give them a chance just the same... I believe that I'm the only dj in the station's history, to play, 'Sweet Transvestite,' by Tim Curry."

and living in Frostburg

Q: In your opinion, what purpose does WFSC serve?

A: Jim O'Brien... "Most times it's a source of entertainment and that's about it. That bothers me though, 'cause a student radio station should go beyond entertainment."

A: Commander Ray Tiny... "People that don't have stereos, gotta have music too... we give 'em the music they need to survive."

A: Kilgore Trout... "First-off, it's a public service to the students... also, it is good practical experience for any dj who intends to follow-up a radio career."

A: Joe Sunshine... "We at WFSC cater to the entertainment cravings of those students too lazy to read, and too poverty-stricken to afford a movie."

Q: With this year's goal set at creating a totally "student run" station, what changes have you instituted in your programming?

A: Jim O'Brien... "My program gives away tapes and pizzas... any announcements that any FSC student or faculty member has to share with the campus, the station is at their disposal... I play what my listeners want to hear, as compared to my personal preferences."

A: Commander Ray Tiny... "I play what they want hear, no set schedule for me,

requests all the time."

A: Kilgore Trout... "None."

A: Joe Sunshine... "I make the most of the request line... I ask around in my cluster, in the cafeteria, in the gym, I figure where there are people there are opinions; and progress must take the advice of opinions."

Q: What would you like to see occur at WFSC in the future?

A: Jim O'Brien... "Some internal organization... the over-coming of financial hurdles... increase 'pic-up' percentage to the entire campus."

A: Commander Ray Tiny... "Better equipment... the dj's are trying hard, but it's tough with bad equipment."

A: Kilgore Trout... "I'd like to see Jim Davis leave, other than that I'm content with the workings of the station."

A: Joe Sunshine... "I would like to witness a 'sorting' process... by that I mean, the college deserves the best in dj's and music. The music can be sorted by a popularity poll, but that's no way to select disc-jockeys. The program director must act like the coach of a team; try 'em out and cut 'em. If the person can't fill the position, tell him to go out for something else."

A: Commander Ray Tiny... "I play what they want hear, no set schedule for me,

requests all the time."

A: Kilgore Trout... "None."

A: Joe Sunshine... "I make the most of the request line... I ask around in my cluster, in the cafeteria, in the gym, I figure where there are people there are opinions; and progress must take the advice of opinions."

Q: What would you like to see occur at WFSC in the future?

A: Jim O'Brien... "Some internal organization... the over-coming of financial hurdles... increase 'pic-up' percentage to the entire campus."

A: Commander Ray Tiny... "Better equipment... the dj's are trying hard, but it's tough with bad equipment."

A: Kilgore Trout... "I'd like to see Jim Davis leave, other than that I'm content with the workings of the station."

WFSC 640 & 1280 AM

on our campus

Center for Management Development

Did you know Frostburg State College offers a Masters Degree program in Management? Realizing the increased demand for individuals with high-level management skills, this institution has organized the Center for Management Development (CMD).

CMD is a separate and distinct department at FSC functioning under its own supervision. Through this structure it is able to directly reflect the innovative policies the department has adopted; including the Case Study Method. This controversial system of instruction first gained prominence at the well known Harvard Business School, of which the director of CMD, Doctor Herbert Myers and his full-time staff are graduates. To those not familiar with this method it seeks to develop in the student a logical and meaningful approach to analyzing problems introduced in the case, an actual organizational situation described by an objective third party. Once an analysis and subsequent recommendations are made, the student is able to defend his thinking against that of his peers by participating freely in open discussion, with the instructor acting as critic, evaluator, and moderator; not a law giver. The result is an equality between student and instructor. This learning environment is designed to encourage students to develop autonomously rather than to produce a standard product through a pre-

scribed procedure.

Since its inception in 1966, CMD has grown to the present number of about 360 full-or part-time students, not only at FSC, but at three branch locations—Oakland, Frederick, and Hagerstown.

CMD offers a program leading to the Master of Science in Management or a Certificate in Management Studies. Seniors may also take courses with credits applicable to their graduate, not undergraduate degree.

In addition to the programs mentioned, CMD also created and subsequently directs the Institute for Small Business, which is designed to serve the many small businesses in the Western Maryland region through research, professional training, and management assistance. Further, larger businesses in the area, such as Kelly-Springfield and Westvaco, are taking advantage of the CMD for personnel training courses as well as professional development in regular class offering.

If the desire for advancement of management skills in this increasingly complex world interests you, CMD may be the answer. Financial aid is available to qualifying students as well as a limited number of graduate assistantships. Those seeking additional information may call 689-4375 or 4376 or stop in at 206 Dunkle Hall.

People start pollution.
People can stop it.

Broadway Liquors

Featuring the Largest Selection of Cold Beer and Wine in Town.

Beer Special
Every
Week-end

9:00 am to 11:00 pm

Mon thru Thurs

9:00 am to Midnight

Fri & Sat

TKE Open Campus Softball Tournament

Tau Kappa Epsilon is currently taking applications for positions in its 3rd annual Tau Kappa Epsilon Open Campus Softball Tournament. Applications will be accepted until the 14th of March.

TKE has sponsored this tournament for the past 3 years with great success. In its first year, the brothers of Alpha Delta Chi won the tourney, single elimination, and the first prize, a keg of Schlitz.

In its second year, the

tourney was slightly changed. Instead of 9 players, the tourney was played with 10. Double elimination replaced the single version. After a highly competitive elimination tourney, the finals pitted the defending champions, the brothers of Alpha Delta Chi against the newcomers to the tourney, the brothers of Sigma Tau Gamma. After the dust cleared, Sig Tau, as it did all year, came away with the championship and a keg of Schlitz.

While not to be derogatory toward any member(s) of our P.E. department, TKE sponsored the only softball played competitively at Frostburg State College last year. The excuse of a lack of fields, and the desire of the P.E. department to field its varsity sports, for a few, rather than intramurals for many, did not hamper TKE's and a few others spirit to play softball. We will have that spirit again!

continued on page five

Cumberland Airlines

25% discount for all FSC students
Departures from Cumberland
Municipal Airport

3 flights Monday thru Friday

1 flight Sunday

7:30am - 11:00am - 4:00pm

to

Washington and Baltimore

Call today

You are invited to an

open-house for

Dave Toey

His barnstorming artwork
and custom barnwood framing

in the

Attic Gallery

of

The Olde Cumberland House

118 1/2 Valley St. in Cumberland

Sat., March 8

10a.m. - 6p.m.

They're Back!



photo by Herbo

Remember FSC personalities Steve Beale, Dave Eyler, Eric Kitchen's sister Betty Sue, Trombone" Motter, "Squeak" Marsalis, Bill Swager, Alan Preston and Dean "oom pah-pah" Grey.

You don't?

Does the name Dr. Jon Bauman ring a bell or how about the music of James Taylor or the Thad Jones-Mel Lewis library or Maynard Ferguson?

To those of you who still haven't caught on to what I'm trying to say let me put it down in plain easy

words. The FSC Jazz Ensemble is back and ready to fill Compton with sounds of jazz on March 10 at 8:15 p.m.

Yep kiddies the concert is free and you'll be treated to selections featuring solos by the above mentioned personalities. You'll hear songs like "Country Road", "The Way We Were", "Don't Git Sassy", "Double Fault Blues", "Left Bank Express" and much more.

Don't forget to fall by and hear a concert of jazz next Monday night.

Recognition of Counseling Center

After an evaluation in September by a visitation team the Frostburg State College Counseling Center has been awarded a certificate from The International Association of Counseling Services, Inc., declaring the counseling service an Accredited Member of this association in Good Standing. It further certifies that the counseling service of the Counseling Center meets high standards of professional competence and ethical practice as evaluated and approved by the university and College

Counseling Centers Accrediting Board.

In accepting this certificate the FSC Counseling Center assumes an obligation

to maintain and improve the quality of their services and to contribute to the advancement of the counseling profession.

Softball

Tournament

continued from page four

This year's plans are based on the applications received. We will accept any roster containing 15 or less players, non-varsity (baseball). The application will be accepted without any discussion to race, sex creed or any of those other federal requirements. Turn your team's applica-

tion into any TKE by March 14th, with a phone number where you may be reached and before break, a meeting will be announced where the tourney will be discussed.

"Let's play softball--- enter the Tau Kappa Epsilon Open Campus Softball Tourney of 1975."

The Stage Door

Beer, Wine, Pizza - Disco Dancing

Be
Yourself

College Students,
Blue Jeans & Hats
Welcome

Frat Parties Welcome

**Harrison Street (Cumberland) across from
Holiday Inn**

**No admission charge with FSC I.D.
& this ad**

PHONE 777-7020

Continuous Sale

on tires

Jetzon - Kelly - Michelin

and many other brands

30% Off

to all Students,
Faculty & Employees



on all new tires in stock plus
Retreads as low as \$10.00 (plus tax and casing). Sale includes all size radials, belted tires, etc. in stock.

FREE STATE TIRE SALES

"Next Door to Footers Cleaners"

918 National Highway, LaVale, Maryland

Welcome to your

Hallmark Card and Gift Shop.

Russell Stover Candies, too.

Come in and browse

Kelloughs

Card & Gift Shop

17 Main St. 689-3990

C.C.B. Highlights

I. President's Report--- President Leanne Frieberger announced the poll taken for possible concerts to be held in April as

revealing the following:
Dave Mason--129 votes
Climax Blues Band--63
Roy Buchanan--54
A grand total of 246 votes

from both on and off campus students. But, as it stands, Dave Mason is wandering abroad and will not know about possible bookings until later (if at all). Therefore, it was decided that we can't afford to wait. (This has happened in the past and we lost all of our prospects.) Therefore, we will then proceed to look into the next highest figure on our poll and work from there.

II. Vice President's Report--Winter Carnival Chairman, Howard Cohen, reported a success for Winter Carnival Weekend (with the exception of the Snow Sculpturing due to a lack of interest). 195 persons attended the Ski Trip to Seven Springs. Estimates were about:

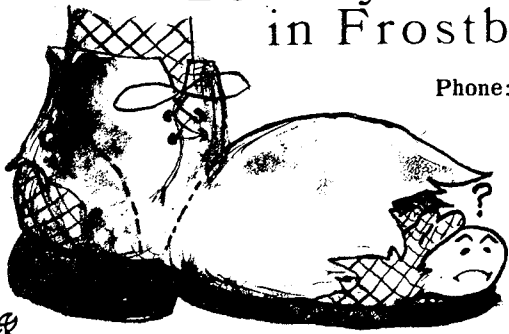
\$1,000 for skiing
515 for bus
60 for tickets

C.C.B. will pay 30% of these costs--about \$750.
III. National Entertainment Convention--On February 8-12, Ro Bridgewater, Jobi Adams, Howard Cohen, and advisor Don Moore, attended the NEC Convention in Washington, D.C. This convention allows colleges to observe and book sorted types of entertainment at conventional rates. Also, sessions are held for the benefit of improving campus activities through lecture continued on page six

The Bowery Shoe Repair

If your shoes aren't becoming to you, they ought to be coming to me. We take old shoes and make them look like new. Resole them with fine leather or composition; give them the new look. We're even specialists in Orthopedic work. It is the practical, thrifty way to increase your shoe wardrobe at 25

**Bowery Street
in Frostburg.**



Phone: 689-3155

Men's Tennis

Practice will begin for all interested candidates on Monday, March 3rd. Players should report to Compton Hall, room C6-4 at 4:00 p.m. dressed for practice.

This year's schedule is as follows:

March 28 --Madison--Away--1:00
 April 7 --Indiana U.--Home--1:00
 April 8 --Shippensburg--Home--1:00
 April 12 --Fairmont--Home--1:00
 April 14 --Shepherd--Away--2:00
 April 16 --A.C.C.--Away--2:00
 April 19 --Salisbury--Home--1:00
 April 23 --Waynesburg--Away--1:00
 April 24 --Pot. State--Home--1:00
 April 26 --California--Away--1:30
 May 8-10 --NAIA District 18 Chp.
 at Slippery Rock, Pennsylvania
 Tennis coach: Kenneth Kutler

Tau Kappa Epsilon (TKE) is an international fraternity with more than 300 chapters in the United States and Canada. With more than 1,000,000 members, TKE is the largest college social fraternity.

Tau Kappa Epsilon at Frostburg State College (Theta Chi Chapter) presently has 41 undergraduate members and 12 pledges. It offers a wide variety of activities and opportunities.

As a social fraternity, TKE sponsors many activities designed to involve

all of its interested members and pledges. Most prominent among TKE's social activities, is, of course parties. Parties for members and pledges are held several times each semester. Parties often include beverages, live music and transportation to and from the parties. But Tau Kappa Epsilon does more than that.

Another important aspect of the fraternity's social activities is the campus intramural sports program. TKE supports football teams, basketball teams, wrestling and softball teams.

Tau Kappa Epsilon is also involved in public service projects. Frostburg's chapter has received several awards for its contributions to the community from TKE's central office in Indiana. An example of these projects is the Annual Charity Production initiated, produced, directed and casted by members of TKE and Alpha Xi Delta, a national sorority on campus. This is the past, the proceeds from this year's show, "Anything Goes," will be forwarded to Friends Aware.

Funds to support the activities of the fraternity are derived from two main sources: dues and fund-raising projects. Fund raising projects are joint efforts made by members and pledges and are designed to enhance the social aspect of the fraternity rather than produce a "work" effect.

Individual academic achievement is encouraged by Tau Kappa Epsilon for a basic common sense reason: a member or pledge who fails out of college cannot contribute to the fraternity. The great diversity of the members and their majors has been found by many new members to be a valuable resource for improving their academic standing.

The tangible benefits of belonging to such a large international fraternity include access to special scholarships, student loans, career placement, special rates on auto and life insurance, and most importantly the valuable

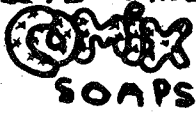
experience of 70 years and 364 chapters. Direct chapter interaction is encouraged by Tau Kappa Epsilon.

Who runs TKE? The TKE system of government can best be described as diffused and effective. Ideas are generated in committees open to the entire fraternity. All decisions are made at meetings of the whole fraternity by a majority vote.

If TKE may be the way to express yourself, contact any member of TKE. For information about pledging, contact Brian Amberman at 214 Allen Hall, 689-4527.

by J. Chilcoat

Candlelight Tavern
 8 miles south of Cumberland
 Free Membership to all FSC students
 during the month of

PIPES PAPERS
 18" PLEXIGLAS BONGS
 \$8
FREE STATE
 95 E. MAIN
 FROSTBURG, MD.
 COMPLETE LINE OF

 SOAPS
 INCENSE OILS



continued from page two
 tice to S.A. power and student power as a whole) without their consultation; and.

Be it therefore resolved that Doug Pranski is a pompous ass.*

All those in favor?

Aye

*I am indebted to an associate for this title.

Dear Editor,

A social organization called *Campus Women* is advertising for the slave master. In short, a "Slave auction" to be held in the Pullen Auditorium, into legal prostitution and moral degradation.

thermore, the name of this organization, *Campus Women*, implies that all the women on this campus, including staff, classified employees, faculty, students, and the wives of faculty and staff members, subscribe to the social and political attitudes reflected by this group. Perhaps the *Campus Women* group needs a reminder that slavery was not only vicious to all Blacks but to women who were regarded as child-bearing machines for the slave master. In short, the slave system forced women into legal prostitution and moral degradation.

Tom Franke
 Linda Franke
 Molly Burnham
 H.G. Ramsay
 Marie R. Torchon
 Janet K. Griffin
 Dana Lewis

CCB Highlights

continued from page five
 tures and comparison with other colleges throughout the nation. Highlights of the convention included a luncheon with guest speaker, Redd Foxx, and a final banquet with Bob Hope (who just happened to bring along President Ford.)

Alot of material was brought back and will be available to any organizations interested in good bookings of performers ranging from lecturers, hypnotists, soloists, magicians, to concert booking. The promotion materials can be obtained at the CCB office.

C.C.B. is considering the possibility of a concert which will include: Martin Mull, Doug Kershaw, and Edmunds and Curley to MC the event. Also the possible idea of having Roy Meriwether (a fantastic jazz musician) the first

week of the Fall Semester is being considered. Information and future available music will be displayed throughout the College Center and the CCB OFFICE AND WFSC. (Just as soon as further promotional materials are sent to us along with albums to be submitted to the Sound Room and WFSC).

IV. Coffee House--CCB is trying to improve the coffee house attendance. Chairman, George Richardson, presented the idea of purchasing sound equipment. Also, a possibility of alternating weeks for coffee house and CCB films on Sunday nites was discussed. This would allow for better quality entertainment and less conflict with other activities on campus.

The next C.C.B. meeting will be held Wednesday, March 12, at 9 p.m. in the Lane Center.

1209
 NATIONAL
 HIGHWAY
 LAVALLE



USE EXITS,
 39 or 40
 of the
 NATIONAL
 FREEWAY

Specialize In
 Szechuan, Mandarin & Cantonese Dishes

Looking for a place to spend an enjoyable evening? Come dine at Peking Palace, enjoy delicious, authentic chinese food in our air-conditioned dining room with oriental decor.

We Welcome Take-Outs - Phone 301-729-1400

Special Chinese Style Banquet
 Can Be Arranged- Phone For Details

PEGASUS
 Handcrafted Gifts
 Custom Leatherwork

93 E. Main St., Frostburg

689-3540

Find It Here

Attention French and Spanish Majors: If you plan to student teach Fall 1975, Spring 1976, or Fall 1976, you must attend a short meeting Tuesday, March 4 at 1 p.m. in the Language Lounge, Allegany Hall.

For Sale: One pair of black patent shoes Size 6. Never been worn. Call Donna at 689-7562. Price: \$9

Mid Terms Get You Down? Study skills need beefing up? Join the mini-course—March 10, 12, 14 at the Counseling Center, 9:30 a.m. Sponsored by SIP.

For Sale: Weston XM-2, Model 550 light meter with case, instructions, battery. Almost like new. Only been used two or three times. Phone 463-5543 or contact Toby Stickley or Kaye Morgan.

Furnished Room for Rent—Interested females. Prices reasonable. Inquire at 45 W. College Avenue or call 689-3256.

For Sale: Stereo turntable, AM/FM radio, 8-track; asking \$45. Call Diane 689-9239 (day) or 689-8714 (night 'til 1:00). 59 Hill Street, 2 weeks.

For Sale: 1970 Chevy Impala for sale. Phone 689-5602, ask for Julie, after 7 p.m.

There will be a meeting for everyone associated with WFSC on Sunday, March 9 at 7 p.m. Lane Center 213-214. Everyone is expected to attend.

The OLYFUMNILYO AFRICAN DANCE THEATRE previously scheduled for January 28 to conduct a master class, will be on the FSC campus Wednesday, March 5 at 4 p.m. in the Lane Center multi-use room. Everyone is welcome to attend this unique dance theatre presenting various traditional movements of Western Africa. Bring clothes you can dance in because you will be part of this new experience.

Hamilton and Kirkland Colleges are sponsoring the Second Annual Stephen Fensterer Memorial Folk Festival to be held May 1-4, 1975. A crafts fair, square dance, and free workshops will be held in addition to the usual musical competition. Competition is limited to the first 50 amateur (non-union) performers. April 15 is the deadline for competition applications. For information concerning the festival and applications, write: Box 691, Kirkland College, Clinton, New York 13323.

For Sale —Make-up mirror with a regular and a magnifying mirror in excellent condition. Cheap!! Contact Sandy at 39 Beall Street or call 689-9605.

We have a few openings for a weekend bus trip to New York City from Thursday, March 6 through Sunday, March 9, sponsored by the Art Department. The cost is \$42 including transportation to and from New York City and lodging at the Taft Hotel (meals and entertainment extra). The bus will leave New York City from the Taft Hotel at 12:30 p.m., Sunday, March 9.

Make payment directly to Willetts Travel, Wright's Crossing. Show the art secretary your receipt of payment and your name will be recorded on the trip roster. Occupancy in each room will be three and four people. If you desire a double room, payment of extra cost can be made at Willetts. Travelers are responsible for their own activities. Deadline for payment is March 4.

For Sale: 1 pr. KLH model 33 speakers; 1 pr. KLH model 17 speakers. Both prs. \$90, retails for much more. For information, call Robin, x7520; Randy, x2902.

FOUND: On Friday, February 14, I suddenly became the recipient of two record albums when they decided to jump off of the roof of a passing car travelling on the Loop Road near Fine Arts. If you would like them back, please call 689-7309 or stop by 323 Frederick and identify them. I need the extra space in my room. Thanks.

LOOKING FOR a ride home, or riders to take home? Inter-Hall Council is sponsoring a service to coordinate rides and riders, beginning this week. Students can call the office which is set up in Westminster Hall Monday through Thursday from 7-9 p.m. The number to call is 689-7782. We will let you know who needs rides or riders to your area, so go ahead and give us a call!!

In Frostburg It's
Mac's Grocery
Bowery St. at the Bridge
Hoagies — 55¢
SPECIAL — THICK
SHAKE & CHEESE
BURGER — 99¢
Frozen Custard, Shakes,
Banana Splits and Cones
— OFF SALE BEER —
We Accept Food Stamps

Calendar of Events

Monday, March 3
Teacher Intern Workshop 9:00-12:00 noon Lane 201
Personnel & Grievance Comm. Meeting 3:00 p.m. Lane 205/206
Fiscal Comm. Meeting 4:00 p.m. Lane 207-208

Tuesday, March 4
Video Tape—"Lenny Bruce Without Tears" 10:30-3:30 Lane Lounge
Delta Alpha Iota Meeting 6:00 p.m. Lane 212
W.R.A. Coed Sports Day--Volleyball 6:30-10:00 Compton Gym
Forensics Meeting 7:00 p.m. Lane 213-214

Wednesday, March 5
Calvert Co. Recruitment 9:00-4:00 Lane 203-204
Balfour Class Ring Rep. 10:00-4:00 Lane Lobby
Video Tape—"Lenny Bruce Without Tears" 10:30-3:30 Lane Lobby
Harford Co. Recruitment 1:00-5:00 Lane 212,213-214
Student Recital 4:00 p.m. Fine Arts 132
History Club Meeting 4:00 p.m. Lane 205-206
Alpha Xi Delta Meeting 6:30 p.m. Lane 202
I.R.C. Meeting 7:00 p.m. Lane 212
B.S.U. Meeting 8:00 p.m. Lane 205-206


Thursday, March 6
Harford Co. Recruitment 9:00-12:00 Lane 212,213-214
W.R.A. Coed Sports Day--Badminton 6:30-10:00 Compton Gym
Ed. Dept./S.E.A. Lecture--Dr. Victor Showalter—"The Expanding Frontier of Unified Science Education" 7:30 p.m. Lane 201
M.F.L. Dept. Production 7:30 p.m. Compton Auditorium
S.A. Meeting 8:00 p.m. Lane 202
Tau Kappa Epsilon Meeting 9:00 p.m. Tawes Hall 335

Friday, March 7
Last day to withdraw from courses with "W"
Talbot Co. Recruitment 9:00-4:00 Lane 203-204
Curriculum Comm. Meeting 3:00 p.m. Lane 207-208
I.V. Christian Fellowship Mtg. 6:30 p.m. Lane 201
Delta Omicron/Phi Mu Alpha Recital 8:15 p.m. Compton Auditorium

Saturday, March 8
I.V. Christian Fellowship Missions Weekend (8&9) Lane College Center Home
Women's Gymnastics: U. of Pa. 11:00 a.m.
Roundabout Children's Play--"Appleseed" 2:00 p.m. Pullen Auditorium
C.C.B. Coffeehouse 8:00 p.m. Lane Snack Bar
Student Artist & Lecture Series New World Consort—"Robin & Marion" 8:00 p.m. Compton Auditorium
Tau Kappa Epsilon Band Dance 9:00 p.m. Lane Multi-use

Sunday, March 9
S.A. & A.A.U.P. Meeting with Politicians 1:00 p.m. Lane 140-141
Roundabout Children's Play--"Appleseed" 2:00 p.m. Pullen Auditorium
S.A. Collective Bargaining Seminar 3:30 p.m. Lane 201
Delta Omicron Meeting 6:30 p.m. Lane 205-206
W.F.S.C. Meeting 7:00 p.m. Lane 213-214
Theta Delta Pi Meeting 7:00 p.m. Lane 202
C.C.B. Movie—"Judge Roy Bean" 8:00 p.m. Lane Multi-use

Remember Today... Tomorrow



Order your class ring.

March 5 **Lane Center**
10 am - 4pm **Soph-Jr - Sr**

Coming to Compton on March 10

A Concert of Jazz

FSC Jazz Ensemble

Dance to the great sounds of The Pork Bros.

Saturday, March 8
9-12 midnight **Lane Multi-use**
BYOB **Sponsored by TKE**

Bobcat Matmen Come Up Short

by Debbi Maloid

The Bobcats lost twice during the past week to conclude the dual-meet season at just under .500 with a 9-10 record.

Injuries and illnesses, which plagued the team from the outset, really took their toll last week. Joe Wallace (118) and Dave Macey (158), two of our more outstanding matmen, were noticeably absent from the line-up against WVU due to the flu. Thus, a badly depleted 7-man team took to the mats against WVU, went flat, and lost 45-0. (The first time the 'Cats have been shut-out all season.) Against Waynesburg College the team was in even worse shape due to injuries sustained by Harold Vliet (177) and Bill Hyson (Hwt.) against WVU. Of the six team members who participated three came out on top for the Bobcat's. Ron Ginsburg (126) won by a superior 10-0 decision, Don Higgins (167) won 6-2 and Jeff Kandle (190) pinned his opponent in the second period. The 'Cats were forced to yield 24 points to the Yellow Jackets by forfeit, thus they lost 34-13!

Dave Cannon (142) now shares the record for victories in one season (15) with Jim Pfeiffer a Bobcat from 10 years ago. Cannon's record is 15-6-1. Harold Vliet (177) is 14-

6-1, Joe Wallace (118) is 12-6-1 and Ron Ginsburg (126) is 12-6. These are the five Bobcat's with a chance for a good showing in the District Tournament.

In spite of the severe number of injuries and the unusually high rate of illness the season, the Bobcats have still hung together well enough to become FSC's most winning winter sport! Their desire to overcome a large number of obstacles this year has been tremendous. Hopefully that same desire will carry a few Bobcats to Sioux City, Iowa and the Nationals!!

In the last three weeks, the Women's Gymnastics team has won 2 meets and lost one. On February 15th the team competed against The University of Buffalo and 1 and Lock Have State College. F.S.C. split this meet by beat in the University of Buffalo 49.7-40.95 and loosing to Lock Haven by 30 points. The following week, F.S.C. beat Fairmont State College in a close competition with the final score being 60.23 to 58.51.

Freshman Nancy Wagner set a new school record in vaulting on Feb. 22 with a score of 6.77 for her

Bobcat Trackmen Set New Record

by Debbi Maloid

The Bobcat trackmen continued their record-slaughtering performances over the past week as the 'Cats broke five indoor records at the Tri-State Collegiate Championships and rolled over UMBC in a dual-meet 59-27.

Track, long one of FSC's most respectable sports, continued in that respect at the Tri-State Championships held at the University of Pittsburgh. Freshman Herb Ecker set 2 FSC indoor records--a 21'5" long jump and a 6.950 yd. high hurdle. Sophomore Scott Matheny placed second in the pole vault with a 14 foot jump. Jeff Williams, a junior set a

new standard in the indoor 440 with a 52.4 time. The 2 mile relay team of Mike Harper, Matt Cline, Tom Rogers, and Chip Brand broke the existing FSC record with an 8:09.7 clocking. Additionally, Mike Harper ran a 4:27.8 mile, all in all the tri-state performance was the best record setting day for the track team ever.

Against UMBC (an event in which several top athletes did not compete due to Monday night classes) the performance was still awesome. The 'Cats swept the mile, two-mile and shot put and set one new record while tying two. Herb Ecker won the 50-yard high hurdles in 6.7 (a new

record) while Tom Abbamonte ran a 5.5 50 yard dash and Bill Rimel had a leap of 6'2" in the high jump to tie those 2 records. The Bobcats have established a total of 10 FSC indoor records this season.

Following are the results of the FSC - UMBC meet: 50 yd. dash 1. Abbamonte (FSC) 2. UMBC 3. Morrissey (FSC) 5.5.

440 1. Williams (FSC) 2. UMBC 3. UMBC 53.1. 880 1. UMBC 2. Cline (FSC) 3 Harper (FSC) 2:00.1. Mile 1. Harper (FSC) 2. Cline (FSC) 3. Brand (FSC) 4:29.5.

2-mile 1. Fletcher (FSC) 2. Bechill (FSC) 3. Brand (FSC) 9:38.5. Mile Relay UMBC 3:43.5 50 yd. high hurdles 1. Ecker (FSC) 2. UMBC 3. UMBC 6.7. Shot Put 1. Titi (FSC) 2. Degnan (FSC) 3. Koenig (FSC) 43'10 1/4". Pole Vault 1. UMBC 2. Koon (FSC) 3. Bonadies (FSC) 12'3". High Jump 1. Rimel (FSC) 2. Jaquith (FSC) 3. UMBC 6'2".

Women's Gymnastics

handspring vault. She beat her previous record which was 5.95. Previous record

Below are the scores of the top three competitors for each event which comprises the total event score:

FSC vs. Univ. of Buffalo and Lock Haven:
Vault:
E. Touhy 4.25 8th
B. Hales 4.30 7th
N. Wagner 5.10 5th
Total 13.65

Unevens:
A. Alpert 3.45 8th
B. Hales 4.00 7th
N. Wagner 4.10 6th
Total 11.55

Beam:
A. Alpert 2.80 9th
E. Touhy 3.65 7th
B. Hales 4.35 5th
Total 10.80

Floor:
T. Hutchins 4.00 9th
B. Hales 4.30 7th
A. Alpert 5.40 4th
Total 13.70

FSC vs. Fairmont:
Vault:
B. Hales 5.13 7th
A. Alpert 6.10 4th
N. Wagner 6.77 2nd
Total 18.00

Unevens:
B. Hales 3.63 4th
N. Wagner 3.73 3rd
A. Alpert 4.93 1st
Total 12.29

Beam:
T. Hutchins 3.37 7th
E. Touhy 3.97 5th
A. Alpert 5.50 1st
Total 12.64

Floor:
B. Hales 4.87 4th
N. Wagner 4.90 3rd
A. Alpert 7.53 1st
Total 17.30

Record to Date: 3 wins, 6 losses

C.C.B. presents

nickel-nite

"Judge Roy Bean"

Sun., March 9

8:00 p.m.

REDWOOD LOUNGE

Formerly the 'Zoo'

now under new management



Open 12:00 till 1:00

Completely remodeled

Ya got the munchies? Come on in,
we've got it all!

Pizza

Wine

Pool

&

the 25¢ Draft



1 mile south of the 'burg

12 oz.