



Salisbury University

Jazz Ensemble

Brian Perez, Guest Director

Thursday, May 8, 2014
Holloway Hall Auditorium, 7:30 p.m.

Salisbury
UNIVERSITY
www.salisbury.edu



PROGRAM

PROGRAM

One by One Wayne Shorter
Arranged by Mark Taylor

I Can't Stop Lovin' You Don Gibson
Arranged by Quincy Jones

Come Fly with Me Lyric by Sammy Cahn
Music by James Van Heusen
Arr. by Dave Wolpe

Cry Me A River Words and music by Arthur Hamilton
Arranged by Jerry Nowak

Jeru By Gerry Mulligan
Arranged by Mike Tamaro

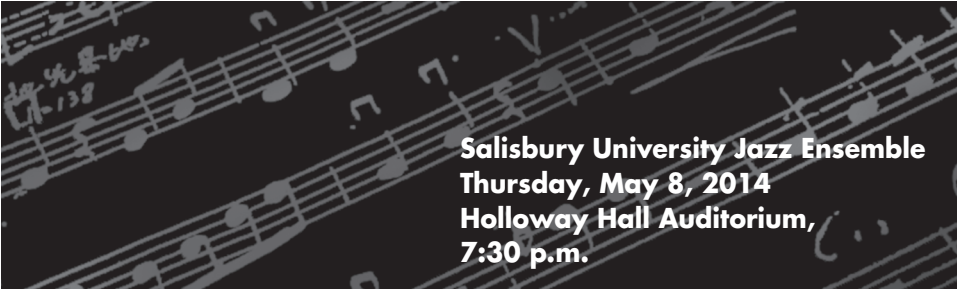
How Deep Is The Ocean Words & Music by Irving Berlin
Arranged by Jerry Nowak

Get Happy Words and music by Harold Arlen and Ted Koehler
Original arrangement by Billy May
Transcribed and adapted by Myles Collins

Chega De Saudade English Lyric by Jon Hendricks and Jessie Cavanaugh
(No More Blues) Original text by Vinicius de Moraes
Music by Antonio Carlos Jobim
Arranged by Mark Taylor

Chanson De La Mariée from *Cinq Mélodies Populaires Greques* Maurice Ravel
Arranged by Brian Perez

Samba Ti Kaye Mark Taylor



Salisbury University Jazz Ensemble
Thursday, May 8, 2014
Holloway Hall Auditorium,
7:30 p.m.

PERFORMERS

Saxophones

Josh Easter
Ryan Donaghue
Regginald Williams
Jonathan Tapman
Thomas Moreno-Holt

Trumpets

Tom Davis
Tom Heiman
Lee Beecham
Pat Shaner

Trombones

Chris Bradley
Rob Beckey
Alex Russell
Jon Gates

Drums

Josh Kahn
Samim Manizade
Burt Tabet
Justin Thompson

Vibraphone

Michael Fitzgerald

Guitar

Garrett Lundegard
Michael Goldsmith
Berent Kilian
Timothy Smith
Zach Simms

Bass

Will Harriett

Vocalists

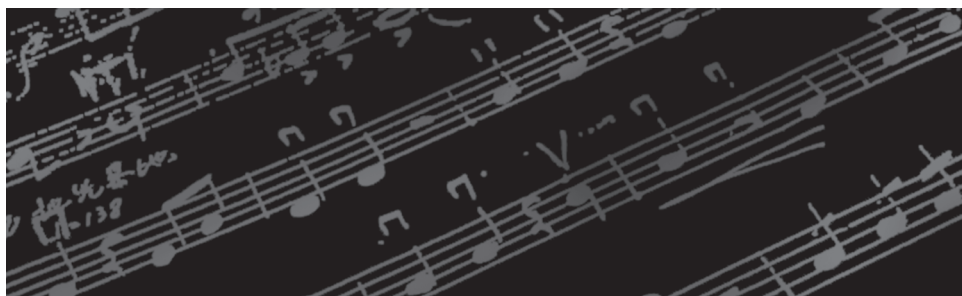
Ayobami Awe
Leah Wilson
Amanda Lundstrom

Thank you for attending our performance. The audience plays an integral part in the success of our program. As an involved audience member, please take a few minutes to read this friendly reminder on concert etiquette.

A Few Helpful Reminders of How to Be an Involved Audience Member

- Please arrive early to ensure that you will have a seat.
- Please turn off your cell phone instead of just silencing it so you will not be tempted to text during the performance. Untimely cell phone interruptions during a performance disrupt the performers and the other audience members, please be mindful of others.
- Please remain in your seat during the performance. If you must leave the concert hall, please wait until intermission. If it is an emergency, please try to leave during the applause.
- Please respect the performers by staying seated for the entire performance.
- As an involved audience member, it is polite to clap at the entrance of the performers.
- It is polite to save quiet whispering or talking, if necessary, between songs, as opposed to during a performance.

Ideas adapted from Concert Etiquette Tips from NAJME's Teacher Success Kit.



ACKNOWLEDGEMENTS

Dr. Janet Dudley-Eshbach, *President*

Dr. Diane D. Allen, *Provost & Senior Vice President of Academic Affairs*

Mrs. Martha N. Fulton & the late Charles R. Fulton

Dr. Maarten Pereboom, *Dean, Fulton School of Liberal Arts*

Dr. William M. Folger, *Chair, Department of Music*

Brooke Church, *Administrative Assistant II, Department of Music*

Caitlyn Howard, *Office Assistant, Department of Music*

If you would like to make a donation to support other performances like this one, please make your check payable to the Performing Arts Fund, specifying the organization in the memo line and mail in care of the Salisbury University Foundation, Inc. at P.O. Box 2655, Salisbury MD 21802.

Please call 410-543-6385 for information regarding upcoming Department of Music performances.

For more information about our academic program, please visit us on the Web at www.salisbury.edu/musicdept.

Department of Music Fulton School of Liberal Arts

Salisbury University
1101 Camden Avenue, Salisbury, MD 21801
Phone: 410-543-6385 • Fax: 410-548-3002
E-mail: wmfolger@salisbury.edu

Delmarva Public Radio

NEW

PROGRAMS

FORMAT

WAY TO EXPERIENCE RADIO

With exciting new programs and a bold new format, Delmarva Public Radio has rededicated itself to providing you with the best news, music, arts and culture from Delmarva — and around the world.



WSCL 89.5 Fine Arts & Culture
WSDL 90.7 Rhythm & News
www.delmarvapublicradio.net • 410-543-6895

The use of audio and video recording devices of all types and the taking of still photos during the performance are not permitted.