



Shoreline

Vol. 11, Issue 11, November 2004

Upcoming Events at the Nabb Research Center

NEW EXHIBIT AT THE NABB RESEARCH CENTER “Late 19th Century Native American Photo History: Tracing the Provenance”

The exhibit is now on display and will run through February 2005. Come explore the works of several late 19th century photographers of Native Americans, as well as Plains and Woodland Indian artifacts. A reception will be held for the exhibit 5-7 p.m.

Tuesday,
November 16,
at the Nabb
Research
Center. All are
welcome and
refreshments
will be served.



It's time to renew your membership at the Nabb Research Center. Most memberships expire December 2004!

The Nabb Research Center depends upon the generosity of its members. Please help us advance preservation and your heritage by remembering the Nabb Research Center in your will and estate planning. Thank you!

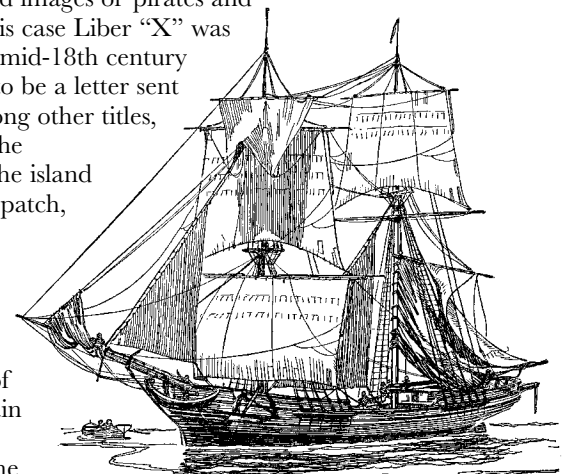
Thanksgiving Closings-
November 25-28



The Sea Nymph: A Ship from the Eastern Shore

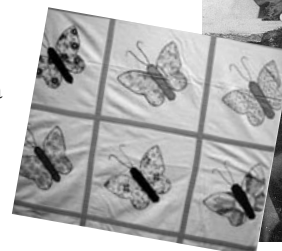
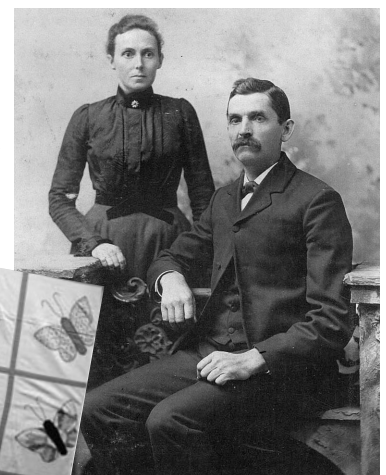
By James Edward Jensen
Nabb Research Center Graduate Assistant

While perusing the early court records for Somerset County an interesting letter was found quietly sleeping in *Liber X* (page 182). What was so unusual about this particular entry was that it was written entirely in French. *Liber X* contains land records and a few related documents such as the view and estimates of orphan's estates; therefore, when an entry as odd as this is found curiosity abounds. I thought, “X marks the spot,” and images of pirates and treasure came to mind and in this case Liber “X” was not far off. After translating this mid-18th century French document, it was found to be a letter sent from Charles Poulin, whom among other titles, was the Lieutenant General of the Admiralty at Fort St. Pierre on the island of Martinique. Intended as a dispatch, this letter written on the sixth of September 1745 certified that Francois I, a privateer, had taken a ship near the island of St. Vincent in a raid. The ship was identified as the *Sea Nymph* of Maryland, recently under Captain William Rander. After further research it was discovered that the ship was built in Dorchester County in the year 1735 for Adam Muir. Its berth was about 50 tons with a square stern and classified as a Brigantine vessel. Records showed that the ship was used for the transportation of 104 men, being captain John Millburn's company, to “the place of general rendezvous in the West Indies” in 1740; as well as a lighter load carrying eight of captain Thomas Addison's company to that same destination the following year. It remains uncertain whether the ship ever returned home, but it does prove that ship builders on the Eastern Shore created one attractive vessel—at least in the eyes of the fashionable French. ❶



Spotlight on Collections: Hazel Garland Counterpane

An appliquéd and embroidered Butterfly bed cover was donated to the Nabb Research Center by Hazel A. Garland of Edgewater, MD, in September 2004. Mrs. Garland's family cover was made by her great grandmother Mary Emma Morris Adkins and dates to the late 1920s/1930s. Mary Emma Morris Adkins and her husband Jacob Murrell Adkins are also seen here. Photograph circa. 1889. ❷



Be a Santa to the Nabb Research Center

Wish List

The September issue of the *Delaware Genealogical Society Newsletter* had the following books and CD-ROMs of Delaware records that we do not have. We'd really appreciate having these in the Nabb stocking.

Delaware 1782 Tax Assessment and Census (CD-ROM) \$20
Deaths from the Delaware Gazette 1854-9, 1860-4 \$24.50
History of Original Settlements on the Delaware \$22.50
Sussex County Orphans Court Records Reel 5, Vol. F (CD-ROM) \$18
Sussex County Orphans Court Records Reel 3, Vols. B-C, 1777-1782 \$18

Book-binding Sponsorships are also available.

The Nabb has finished purchasing hundreds of new monographs with funds from the Lower Delmarva Genealogical Society from its generous donation we reported to you in the July issue. Since many of the new acquisitions are in paperback form, Nabb wants to have as many volumes hardbound for which we can muster support. The cost is \$10 per volume. We have the following counties requiring support:



Somerset 9 volumes
Worcester 11 volumes
Wicomico 4 volumes
Talbot 6 volumes
Caroline 6 volumes



Your reward for generosity is a bookplate stating your support and in knowing that you are helping to preserve a certain piece of Delmarva history and Culture.

Original Documents Wanted for *Shoreline*

Of course Nabb would love to have you donate your precious documents to us to preserve for posterity but in the alternative we'd like to scan old diaries, Bible records, unprobated wills, original deeds, Civil War, Revolutionary War, Spanish-American War correspondence and old ledgers. Do you have items such as this in your home, perhaps in a trunk up in the attic? If you will let us have a copy with permission to print, we can share the information in *Shoreline*, credited to your generosity. This is a great way to ensure that your treasure will not be lost and you may help a member of the Nabb make a vital connection that otherwise could not be made.

Please send your scan to rfmiller@salisbury.edu or make an appointment at 410-543-6312 to have us scan your treasure.

