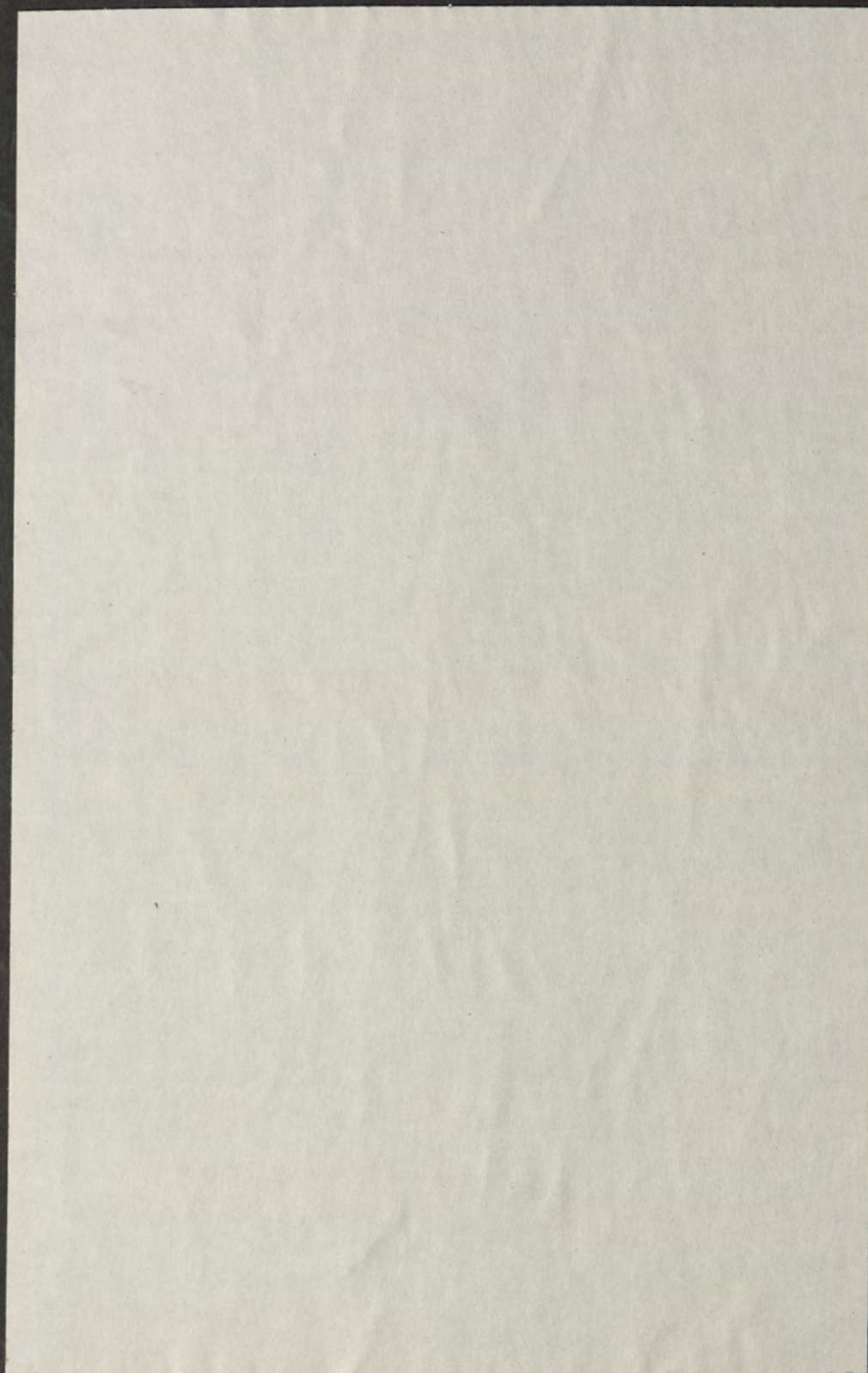


Spc  
LB  
1885  
.F7  
N4  
1944

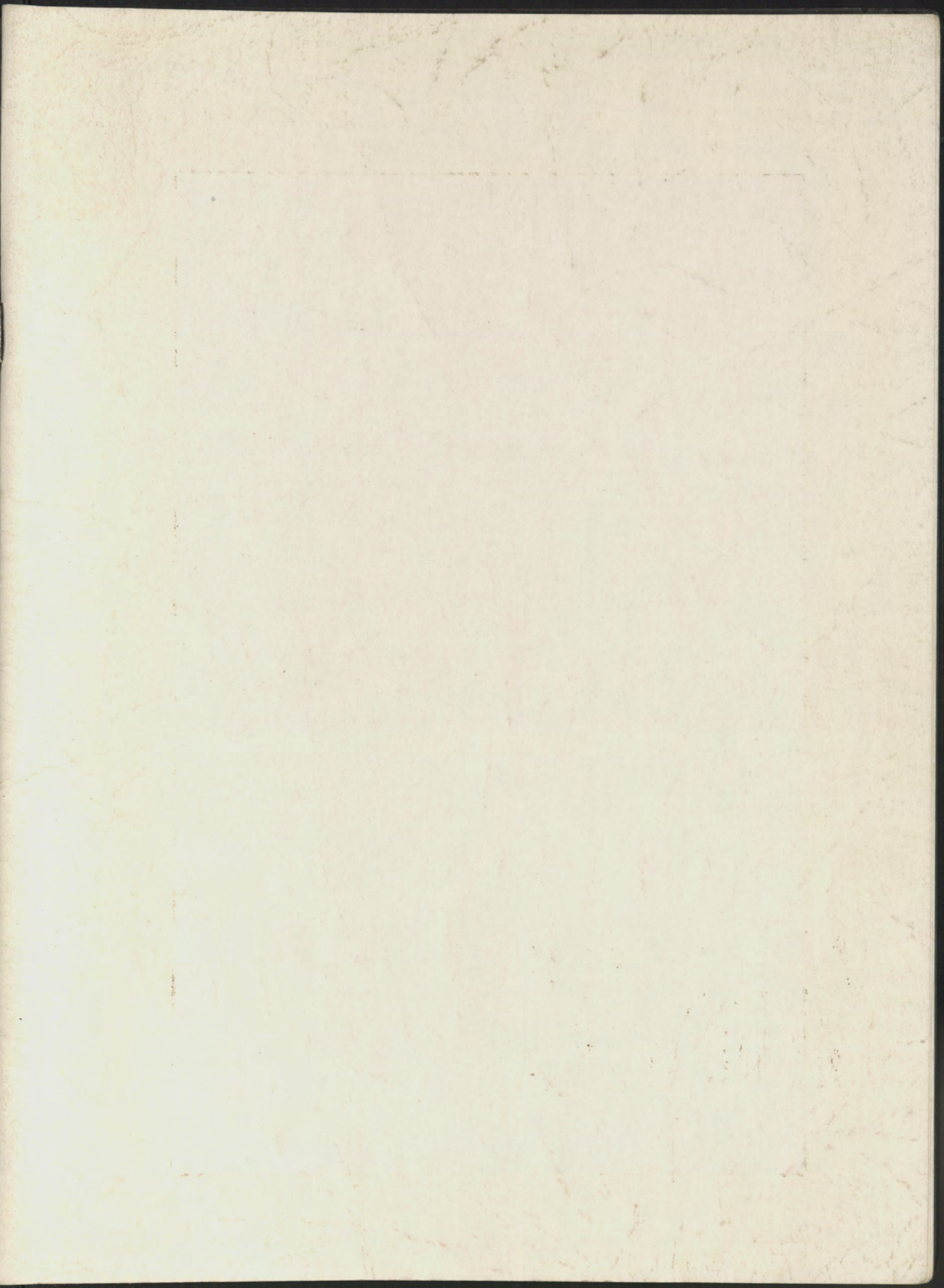
# NEMACOLIN

1944













1944

**NEMACOLIN**

**STATE TEACHERS COLLEGE**

**Frostburg, Maryland**





Photo by Howard Ward



# GRADUATES



# Seniors On

**Edith E. Crowe,** Frostburg . . .  
F. T. A. . . Sorority . . . tennis . . .  
W. R. A. . . Maryland Singers . . . Day  
Council . . . S. C. A. . . Student leader  
award . . . will teach in Carroll  
County . . .

**Mary L. Geiger,** Mt. Savage . . .  
W. R. A. . . specializes in baking wed-  
ding cakes . . . Davies star boarder  
. . . spends all her time writing letters  
. . . has not accepted a school . . .

**Frances Nine Davies,** Oakland  
. . . army wife . . . one-woman art ex-  
hibit all framed in room five . . .  
learning to play the piano . . . will  
teach at Friendsville, Garrett  
County . . .

**Betty Lee Geis,** Frostburg . . .  
Maryland Singers . . . Press Club . . .  
junior playground leader . . . S. C. A.  
. . . Day Council . . . will teach in  
Washington County . . .



Left to right:

Edith E. Crowe  
Frances Nine Davies  
Mary L. Geiger  
Betty Lee Geis



# Campus

**Ruby Hoffman,** Williamsport . . .  
F. T. A. . . State on the March . . .  
sorority . . . junior choir leader . . .  
Maryland Singers accompanist . . .  
Student leader award . . . Who's Who  
. . . engaged to Bill . . . teaching in  
Washington County . . .

**Mary Susan Hott,** Frostburg . . .  
F. T. A. . . . Maryland Singers . . .  
sorority . . . I. R. C. . . S. C. A. . . is  
going to teach in Hyattsville, Prince  
George County . . .

**Helen Hansel Kasekamp,** Eck-  
hart . . . navy wife . . . June graduate  
. . . Denny's mother . . . blue-black  
hair . . . has not accepted a school as  
yet . . .

**Katharine L. Lang,** Glen Burnie  
. . . Thunderbolt . . . Nemacolin . . .  
I. R. C. . . F. T. A. . . contributor  
to mural . . . did the whole panel,  
Literary England . . . will teach at  
Winfield, Carroll County . . .



Left to right:

Mary Susan Hott

Ruby Hoffman

Helen Hansel Kasekamp

Katharine L. Lang





Left to right:  
 Sue Sweitzer  
 Betty Lee Neikirk  
 Betty Jane Oller  
 Wilhelmina McClain

**Betty Jane Oller**, Smithsburg . . .  
 S. C. A. . . orchestra . . . piano student  
 . . . Maryland Singers . . . will teach  
 in Washington County . . .

**Sue Sweitzer**, Oakland . . . June  
 graduate . . . Maryland Singers . . .  
 super and endless wardrobe . . . likes  
 parties . . . plans to teach at Glen  
 Echo, Montgomery County . . .

**Wilhelmina McClain**, Hagerstown . . .  
 House Council . . . F. T. A.  
 . . . Thunderbolt . . . Nemacolin . . .  
 S. C. A. . . State on the March . . .  
 Student leader award . . . to teach in  
 Washington County . . .

**Betty Lee Neikirk**, Hagerstown  
 . . . tennis . . . Air Corps fan . . .  
 source of all the campus slang ex-  
 pressions . . . will teach in Washing-  
 ton County . . .



**Betty Virginia Wilson,** Frostburg . . . Thunderbolt . . . Nemaquin . . . Press Club . . . I. R. C. . . S. C. A. . . Student leader award . . . Who's Who . . . will teach in Silver Spring, Montgomery County . . .

**Marion L. Wintermyer,** Cumberland . . . I. R. C. . . senior class president . . . sorority . . . State on the March . . . Student leader award . . . tennis . . . will teach at Flintstone, Allegany County . . .

**Elizabeth B. Wilson,** Frostburg . . . Maryland Singers . . . voice student, sang for Cadman . . . W. R. A. . . tennis . . . sorority . . . F. T. A. . . going to study singing in New York.

**Ella Louise Wilson,** Cumberland . . . I. R. C. . . sorority . . . Maryland Singers . . . Little Theatre . . . Press Club . . . assembly committee . . . going to teach in Silver Spring, Montgomery County



Left to right:

Marion L. Wintermyer  
Betty Virginia Wilson  
Ella Louise Wilson  
Elizabeth B. Wilson





Betty Lee Conrad      LaVerda Glime      Mildred Llewellyn Sleeman  
                          Harriet Brode      Thelma Close Fuller

## Cadet

**Harriet Brode,** Frostburg . . .  
 teaches at Suitland, Prince George  
 County . . . voice certificate . . . pet  
 expression "and make it slo" . . .  
 U. S. O . . .

**La Verda Glime,** Frostburg . . .  
 taught at Seat Pleasant, Prince  
 George County . . . Spanish dancer  
 . . . Charlie's in California.

**Thelma Close Fuller,** Frostburg  
 . . . teaches in Cumberland, Allegany  
 County . . . "A-plus-er" . . . Press  
 Club . . . I. R. C. . . W. R. A. . . joined  
 "WIVES" in May . . . Who's Who . . .

**Betty Lee Conrad,** Frostburg . . .  
 "Connie" taught in Prince George  
 County . . . athlete . . . shower room  
 gang . . . Diddy's pal . . . W. R. A. . .

**Mildred Llewellyn Sleeman,**  
 Frostburg . . . "Diddy" teaches at  
 Columbus . . . sorority . . . Topper  
 . . . "Oh. Johnny" . . . shower-room  
 gang . . .



**Anne Devlin**, Midland . . . "Bridget" teaches in Hyattsville, Prince George County . . . W. R. A. president . . . "Anchors Aweigh" . . .

**Josephine Reichard**, Hagers-town . . . "Josie" teaches at Hagers-town, Washington County . . . art . . . Press Club . . . science . . . F. T. A. . .

**Adlyn McLane**, Salisbury . . . "Pooshie" teaches at Hampstead, Carroll County . . . alto in trio . . . orchestra . . . sorority . . . Dimple's roommate . . . Who's Who.

**Beulah Walter Eby**, Highfield . . . "Dimples" teaches at Cascade . . . second soprano in trio . . . Y. W. . . sorority . . . U. S. O. . . Marty's Cousin . . . orchestra . . . Student Congress.

# Teachers

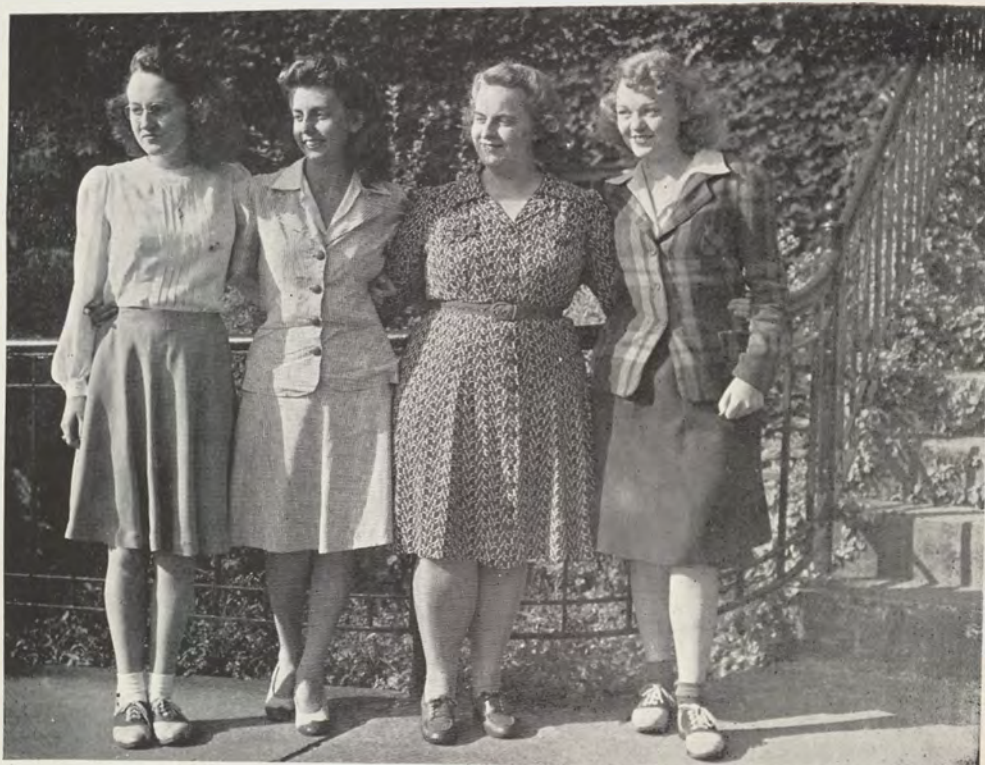
Anne Devlin    Adlyn McLane    Josephine Reichard    Beulah Walter Eby





**Mary Byrnes**, Frostburg . . .  
teaches at Silver Spring, Mont-  
gomery County . . . sorority . . .  
heart's in Southwest Pacific . . .  
Little Theatre . . . U. S. O. . .

**Dorothy Lindamood Filsinger**,  
Cumberland . . . Nemaquin . . .  
"Dottie" taught in Kensington, Mont-  
gomery County . . . playwright . . .  
sorority . . . Press Club . . . Little  
Theater . . . I. R. C. . . joined Bobby  
in Columbus . . .



Mary Byrnes    Dorothy Lindamood Filsinger    Helen Porter    Betty Stewart

**Helen Porter**, Lonaconing . . .  
teaches at Darnestown, Montgomery  
County . . . missed the "fourth"  
bus . . .

**Mary Louise Larkin**, Frost-  
burg . . . teaches at Sandy Spring,  
Montgomery County . . . week ends  
in Laurel . . . W. R. A. . . passion for  
peanuts . . .

**Betty Stewart**, Frostburg . . .  
. . . "Gretchen" teaches at Hyatts-  
ville, Prince George County . . .  
sorority . . . Little Theater . . . base-  
ball fan . . . likes red hair . . .



**Sarah E. Jones**, Westernport . . .  
 "Wrong-Way Jones" teaches at  
 Bethesda, Montgomery County . . .  
 U. S. O. . . I. R. C. . . Who's Who.

**Elvie Bowman**, Mt. Savage . . .  
 teaches in Carroll County . . . motor-  
 cycle enthusiast . . . Press Club . . .  
 Nemacolin . . . F. T. A. . .



Sarah E. Jones      Thelma Manahan Shockley      Hilda Wetnight  
 Elvie Bowman      Edna Elliott

**Thelma Manahan Shockley**,  
 Sabillasville . . . "Tommy" taught at  
 Hagerstown, Washington County . . .  
 married Joe . . . Little Theater . . .  
 sorority . . . F. T. A. . .

**Hilda Wetnight**, Knoxville . . .  
 teaches at Union Bridge, Frederick  
 County . . . Y. W. . . 4-H . . .

**Edna Elliott**, Lonaconing . . .  
 teaches at Piney Plains, Allegany  
 County . . . Girl Scout Leader . . .



**Anna Martha DeVore,** Frostburg . . . "Torchy" . . . teaches at Hampstead, Carroll County . . . red hair . . . orchestra . . . cablegrams from Iceland . . . I. R. C. . .

**Rachel Groter Donahue,** spent winter at Miami Beach . . . likes to drive "jeeps" . . . joined "WIVES" . . .

**Dorothy Glenn Coakley,** Friendsville . . . "Dottie" taught in Williamsport, Washington County . . . Nema-colin Staff . . . liked parties . . . Army wife . . .

**Elizabeth Anne Parks,** Frostburg . . . "Betty" teaches at Hagers-town, Washington County . . . so-rority . . . week ends in Baltimore . . . "Always Fair" . . .

**Jane Peddicord Wempe,** Cum-berland . . . taught in Edmonston . . . sorority . . . June bride . . . Nema-colin . . .

**Irene Routzahn,** Frederick . . . "Renee" . . . teaches at Taneytown, Frederick County . . . seen often in a green convertible . . . enjoyed field trips . . . actress . . . sorority . . . "Tell it to the Marines" . . .

Left to right: Anna Martha DeVore, Rachel Groter Donahue, Dorothy Glenn Coakley, Elizabeth Anne Parks, Jane Peddicord Wempe, Irene Routzahn







Left to right: Rachel Lovell Athey, Joyce Brandenburg, Margaret Cline, Martha Eby Carrington, Lucille Greenwood Hayes, Mary E. DeWitt Truly

**Rachel Lovell Athey,** Smithsburg . . . Ed's sweetheart . . . "Skeeter" . . . sorority . . .

**Joyce Brandenburg,** Myersville . . . teaching in Washington County . . . tall and slender . . . 4-H Club . . . giggles . . .

**Margaret Cline,** Hagerstown . . . "Maggie" . . . teaches in Hagerstown, Washington County . . . sorority . . . Press Club . . .

**Martha Eby Carrington,** Frostburg . . . taught in Edmonston, Prince George County, but preferred Beall High . . . "Marty" . . . sorority . . . soprano in trio . . . actress . . .

**Lucille Greenwood Hayes,** Frostburg . . . "Lucy" . . . taught in Mt. Rainier . . . pretty hair . . . married the banker . . .

**Mary E. DeWitt Truly,** Vindex . . . "Betty" teaches in Garrett County . . . travels in limousines . . . "I Love You, Truly" . . .



# Graduating Teachers in Service



Left to right: Paul DeHart, Elizabeth Miller, Agnes Lauder, Margaret V. King, Kathleen Barnard Rider, Florence Turnbull Howell, Thelma Kyle Byers, Agatha Witte

## **Kathleen Barnard Rider,**

Cumberland . . . taught two years in Carroll County . . . Maryland Singers . . . likes traveling . . . August war bride . . . will teach first grade at Pennsylvania Avenue in Cumberland.

**Thelma Kyle Byers,** Barton . . . teaches at Moscow . . . has a small son . . .

**Paul DeHart,** Hagerstown . . . only Iota Alpha Sigma man on campus . . . likes mathematics . . . photography . . . principal of Chewsville School, Washington County . . .

**Florence Turnbull Howell,** Barton . . . sixth and seventh grades plus eighth grade social studies and music at Luke . . . has a son, Bobby . . . gardens . . .



**Margaret V. King,** Cumberland . . . Member of National Committee for Publicity, Publications and Membership of the Association for Childhood Education . . . teaches third grade at Pennsylvania Avenue, Cumberland.

**Agnes Lauder,** Lonaconing . . . teaches fifth grade at Center Street in Cumberland . . .

**Elizabeth Miller,** Cumberland . . . teaches second and third grades at Columbia Street, Cumberland . . . collects pottery and needlework from Guatamala . . .

**Agatha Witte,** Mt. Savage . . . excellent cook . . . teaches at Dutch Hollow.

## Seniors' Mural

Pandora, Mother Goose, Miss Muffet, Little Black Sambo, Jack of beanstock fame, and his fierce giant, Pegasus, Cinderella, Red Riding Hood, Pinocchio, Humpty Dumpty, and many more of those beloved characters from the pages of a child's favorite fiction wend their way up and down the walls of Dr. Howard's room. These figures compose a mural which features Mother Goose with black and white striped stockings, Betty Grable legs, and Minnie Mouse shoes, and a red-skinned green-haired Pandora. Frolicking gaily among the characters are children done in black and white for whom the story-book people were created. One of last winter's children's literature classes began the project which they have completed during the first weeks of summer school.

Our artists, many of whom have discovered their latent talents in the process, are Katharine Lang, Hilleary Rockwell, Becky Wilson, Willie McClain, Louise Wilson, Betty Geis, Sue Hott, and Marian Wintermyer. Pictures of them at work on the mural have been taken for the Cumberland papers. Katharine Lang enjoyed working on the mural so much that she has begun painting a literary map of England on another wall.



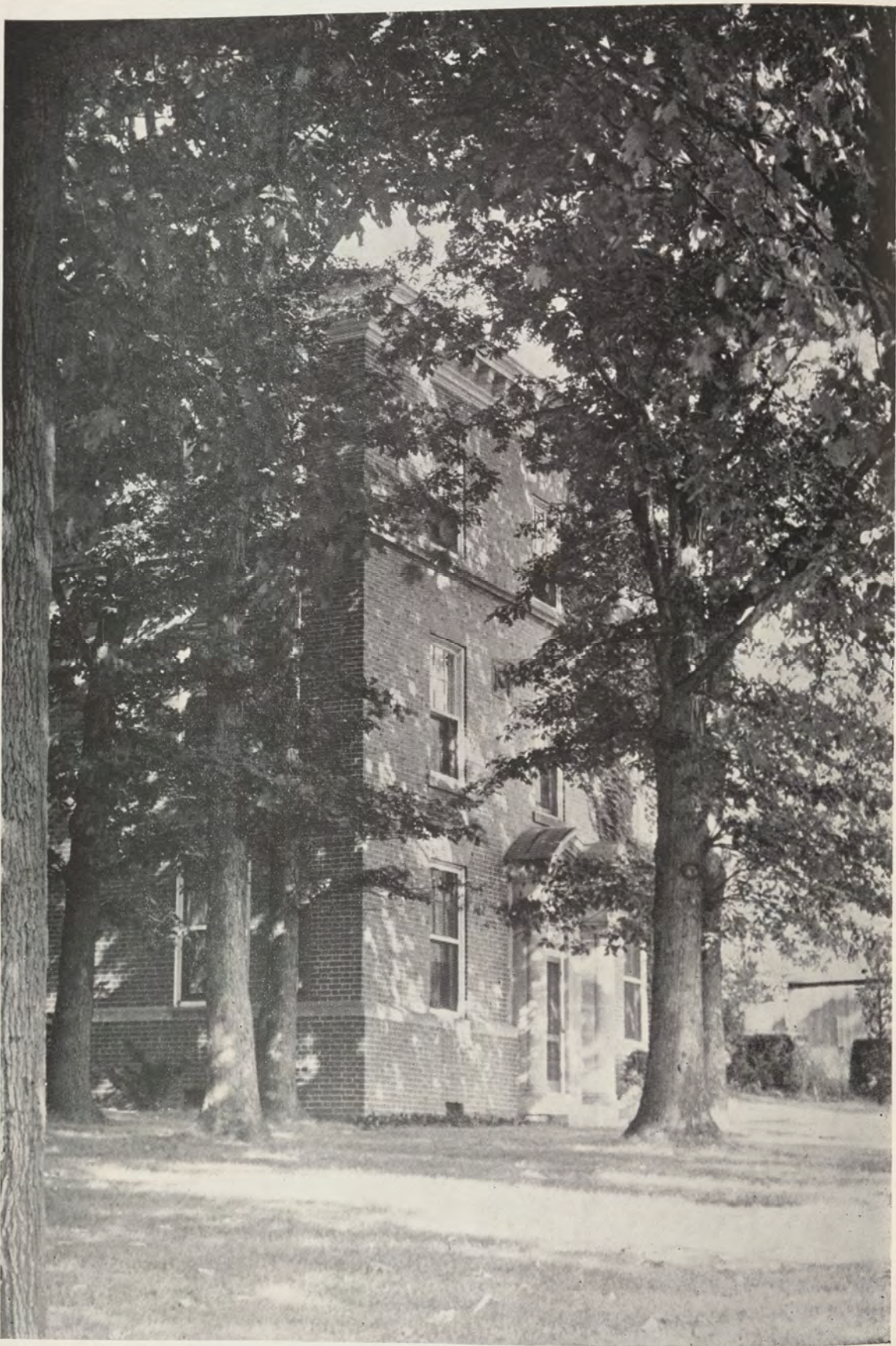


Photo by Howard Ward



# Juniors

Why somebody didn't post a notice forbidding more than three juniors to congregate in the dayroom at one time is one of the large miracles of the year. Certainly wailing and gnashing of teeth behind closed doors across from the office and down the halls of the dorm convinced the rest of the campus that we were as badly mistreated as we hoped the faculty would believe we were. Upper classmen sympathized with, "Well, if you think that's bad, just wait'll you get in the training school," but those "out-grown" rats who called themselves sophomores just grinned as usual. Just why the changes in the curriculum made the juniors the guinea pigs is one of the unexplained mysteries of faculty meetings, but Education 31, the "big experiment," happened to us and is here to stay. Certainly one wouldn't expect the lump-sum methods course to be the reason for inspired poetry and explanations as to how long it takes a girl to put up her curls. Those lesson plans we taught in the proving grounds across the way made us almost sure that being professional—student teachers they'll call us—won't be so difficult in September.

After hearing tales of the seniors' artistic prowess, we were prepared for anything. Fortunately the "William Tell Overture in color" attracted so much attention that the rest of the class moved along in comfortable obscurity.

Back Row:  
Berradine Boyle  
Virginia Boyer  
Isabel Devine

Front Row:  
Peggy Couchman  
Maxine Agnew  
Eva Cook







Left to right:

Vera Goodwin

John Grim

Aden Lewis

Helen Glotfelty

Geraldine Glenn

Nancy Kalbaugh

Phyllis Holmes

The music class voted in favor of donating their voluminous courses of study to the library for use by future teachers. Even syllable singing was easy compared to typing the minimum fifty pages on the community typewriter that somebody else always got to first. (Editor's note: "The community typewriter" was "borrowed" from publications and has modulated from one key to the other ever since.)

Just try asking the five fugitives from second-semester chemistry what happens when somebody drops a course at mid-year. Now that they've finally made it up, Boyer, Couchman, Devine, Gowland and Holmes wonder why nobody bothered to tell them it was required.

The contribution to community morale of which we're most proud is wonderful, wonderful musical comedy, Athapastusical. We juniors take all the credit—who bothers to consider a soph like Rollins—because our own Agnew and Devine wrote it.

## Juniors



# Juniors

In spite of all our monkey-shines, we have not neglected our war-time duties. We've donated blood—Glenn, Agnew, Matese, Murphy, and Glotfelty have set an example for all to follow—; we've attended the dances for the Bedford sailors; we've tried to aid the Good Neighbor Policy by helping Brazilian Air Cadets learn English; and we've certainly not forgotten to keep the letters going to our own boys. During this summer Holmes and Murphy are helping to build our youth by supervising summer playground activities, while Marshall and Glotfelty are trying to relieve some of the farm-labor shortage. However, we realize that our real war work will begin in September when we start our student teaching in the training school. From the few professional courses which we have had, we feel that we are developing a philosophy which will carry us through the crisis of teaching in wartime America.

Standing:  
Hilleary Rockwell  
Mary Meek

Seated:  
Betty Matese  
Doris Marshall  
Corlista Murphy

In Absentia:  
Betty Gowland  
Gloria Nesbitt  
Phyllis Matthews  
Alice Wills  
Bettie Price





# Sophomores

If you hear a giggle, nine to one it's a sophomore. They eat candy bars in the library to stop sounds of hunger . . . keep the faculty busy investigating causes of day room episodes . . . "Cooke charging Rockwell or Rockwell charging Cooke."

Music Class . . . Matty and Varsity Row, a great combination . . . might flunk although syllable tests or modulations, but we'll remember Matty's stories with his morals . . . "If you haven't chocolate, you can use cocoa," or "when you take by-paths, you might meet some very interesting things, wolves, for example."

Music appreciation evident by our playing records . . . to develop eurhythmics, we naturally chose dance music . . . Timmie and Joe Lee being champ jitterbugs for anybody's money . . .

Our musicians . . . Nancy now assistant pianist, and when Kester was here, he and Kreiling were marvelous violinists.

Helen Kelly, Idabelle Ewing, Bill Henline, Helen Kreiling, Nancy Gibney



Margery Hinkle, Rosemary Buckalew, Helen Cooke





Dorothy Snider, Mary Grace Rollins, Matilda Over  
Betty Schlunt, Helen Timney, Barbara Martin  
Miriam Orndorff  
In absentia: Mary Jane Rice



Musical comedy, Athapastusical, . . . Tillie and Margery had singing leads, Mary Grace helped to write it, everyone else in the class had parts in it . . . Betty captured more than the attention of the audience that night . . .

Sociology problem . . . Which comes first, baby or frigidaire? Need a priority for a frigidaire in war time.

Psychology . . . good arguments . . . our favorite class . . . tics.

Science . . . each sophomore a genius . . . several have passed one or more tests.

Artists . . . Rosie, Kelly, and Miriam . . . greatest works shown in classes other than Art.

Tennis quartette . . . pride of the campus, Ewing, Kreiling, Cooke, and Rollins . . . play all over courts and outside the fence.

Kreiling also a softball star . . . used all her energy to throw a ball into Phil's face from a distance of two feet . . . all of us good in softball . . . not our fault if our legs aren't shaped right to stop some of those wild balls.

First Aid . . . Kester . . . Suzabelle's soup plates and the bones that go with them . . . Kreiling tried to walk in her traction splint after she was dropped head first onto floor . . . Bill passed pressure-point test with honors.

Parties . . . Bill hypnotized . . . Kelly might have taught Kester to skate.

Freshmen initiations by sophomores under class officers, Mary Grace, president; Idabelle, vice president; and Dottie, secretary-treasurer . . . Sophomores really love freshies . . . tried to prove it later by parties and picnics . . . waiting for fall hazing, though.

Sophomores keep up morale of service men . . . letters to our boys and to the Brazilians . . . sailor dances . . .

Cookie, Miriam, and Mary Grace to Jackson's Mill with Miss Jones to represent Student Christian Association . . . M. and K. Junction . . . Dottie and Margery to 4-H Camp in Michigan.

Secondary Schools Committee . . . Bill appointed chairman . . . many sophomores accompanied Mr. Dunkle to talk to graduates from home town high-schools . . . Sophomores eager to interest others in this important war work, teaching.



# Freshmen



Beverly Beckman, Geraldine Ort, Jacqueline Penner, Janeva Henline  
In Absentia: Donaldlyn Hinze, Ann Llewellyn, Shirley Matthews,  
Martha Shaner, Sarah Lee Stotler



# Freshmen

The rookies have established a beachhead on the shores of Higher Education. As yardbirds, we arrived on campus. During the first week of basic, we cowered under the iron hand of the sophomores, tough top sergeants if we ever saw any, who went out of their way to vent pent-up vengeance they'd been saving since the year before. We apprenticed as orderlies, saluted "superiors," endured air raids from horizontal positions, and trembled in the high courts of justice after lunch each day—naturally every freshman offended every day. We emerged from the gruelling commando course as "Humble Rats." Out of the admiration, respect and affection for these sophomores (and because we lost the tug-o'-war) we entertained with a hamburger fry on the campus.

Realizing the responsibilities of the Freshman Class we elected officers during the week of entry. Martha Shaner, formerly of Allegany High School, was chosen president. Other officers of the class are: Janeva Henline, secretary and Geraldine Ort, treasurer.

The entire class is now working for the government by writing to Brazilian air cadets who are studying English. As part of our Lend-Lease program, the United States is helping Brazil train her fliers, and we are helping them with their English and are keeping our morale high. Fortunately, this letter writing activity is part of our English program, thanks to Dr. Howard's active belief in the Good Neighbor Policy.

These first few weeks have been so much fun that we are anticipating taking part in many more of the college activities. We even enjoyed hazing; we wouldn't treat dogs the way the sophomores treated us—but wait 'til we get the freshmen next year.

We have chosen to go on with our education and become teachers rather than take other defense jobs, because we feel that Americans must be educated if we are to have a lasting peace.





Left to right: Hannah Allamong, Nellie Deneen, Glennis Shelton, Helen Buchanan, Genevieve Beck

In absentia: Dorothy Beckman, Christine Buck, Jonelle Connor, Frances Crist, Margaret Doak, Virginia Fatkin, Elizabeth Flake, Bertha Thomas, Fay Ayers, Elizabeth Rank, Marie Worgan

## Teachers in Service

American women are willing to make the sacrifices that go along with the privileges of Democracy . . . Women who had given up teaching have willingly returned to classrooms to replace men called to service . . . because education is a second line of defense vital to the future of our country . . .

Some of these women have returned to "State" this summer to renew certificates or to receive degrees and certificates. They have come back without fanfare because they know where they can be of most service.

The work they have been doing for the Red Cross, the U. S. O., and the ration boards has been the kind of personal service that all citizens are expected to offer in wartime.

But today teachers, as community leaders, direct and participate in all activities bearing on the war effort. They have organized the children in their classrooms into groups who buy stamps and bonds, collect scrap metals and waste paper, plant and care for victory gardens and then help sell or can the vegetables, take Junior First Aid courses, help leaders on the playgrounds, and care for the neighbor's children.

Responsibility rests more heavily than ever before upon the school and the teacher . . . especially in homes where both parents are working in war plants . . . it is the teacher, then, who must fit the child for his future in America . . . and the teacher is ready.



# Log

- Sept. 14-17. We started back to school minus the cadet teachers and plus our new freshmen. Freshmen hazing was the highlight of the week.
- Sept. 28. Freshmen lost the tug-o'-war, as usual, and gave the sophomores a party, as usual.
- Sept. 29-Oct. 6. Sorority Rush Week.
- Oct. 4. 4-H presented a style show in an assembly.
- Oct. 8. Thrill for the girls at State—brought sailors from Bedford over for a dance.
- Oct. 11. Sue Sweitzer became engaged to Frank Carter by telephone.
- Oct. 12. Little Theater held their initiation of new members.
- Oct. 25. New rules and regulations initiated at Dorm.
- Oct. 27. W. R. A. Hallowe'en Party in gym.
- Nov. 5. Parents' Night—Little Theater presented play and Glee Club sang.
- Nov. 9. Stout Theater Workshop assembly program.
- Nov. 12-13. Five I. R. C. members attended the Middle Atlantic Conference at Johns Hopkins in Baltimore, with Miss Shaffer and Dr. McClellan.
- Nov. 13. Worst snow storm of year. Elements class braved weather to locate local landmarks.
- Nov. 16. State made the Cumberland Sunday Times—Full pictorial section of activities going on at State at this time.
- Nov. 18. Sophomore art frieze finished. Sophs breathe sigh of relief (pretty good frieze, at that!).
- Nov. 23. Formal Thanksgiving dinner at Dorm.
- Nov. 24-28. Change of scene—continued lessons at home instead of at school.
- Dec. 3. I. R. C. Panel, Making and Keeping the Peace in Far East at Frostburg Rotary.
- Dec. 15. Annual Christmas Carol Service presented by Glee Club. They did a commendable job.
- Dec. 17-Jan. 3. Christmas vacation.
- Jan. 20. Sorority Card Party. I. R. C. panel given before Kiwanis Club in Cumberland.
- Jan. 21. Day Students' party.



- Jan. 25. I. R. C. panel given before Business and Professional Women's Club.
- Feb. 1. New semester begins.
- Feb. 3-9. Sorority Rush Week.
- Feb. 8. Joaquin Ninculmell, pianist, captivated the audience at State and also promoted the good neighbor policy with South America (was he cute!).
- Feb. 18. Valentine Party in gym.
- Mar. 23-25. Four student delegates and Mr. Diehl represented State at the New York conference for Eastern State Colleges.
- Mar. 24. Eileen Farrell, soprano, gave a recital at Fort Hill High School. Mr. Matty sold tickets to us.
- April 13. Junior Class went to Mr. Dunkle concerning ED. 31.
- April 21. American Literature class starts one-sided correspondence (so far, that is) with Brazilian Aviation Cadets.
- April 25. Athapastusical, musical comedy written and produced by Little Theater and Glee Club members, was a success.
- April 28. Another Sailor Dance. Gets to be a habit, doesn't it?
- June 6. D-Day—all sat patiently by Matty's radio listening to news of Invasion.
- June 6-8. Wrote courses of study for Junior Music.
- June 8. Summer vacation begins.
- June 19. Summer semester begins.
- June 19-23. Freshman hazing. Usual tug-o'-war and same results as previously.
- June 21-28. Sorority Rush Week.
- July 12. Alumni day held with campus supper in Dorm. Also—Hilda Ohlen, soprano, presented assembly which was followed by a service honoring alumni in service. Ted Foote's work was exhibited.
- July 4. Assembly—"Listen to the People."
- July 20. Leaders of Senior Class awarded at Annual Leadership Banquet.
- July 28. Sailor Dance.
- Aug. 2. Mr. Matty told of his experiences at the MacDowell Colony in New Hampshire and Mrs. Matty played some of his compositions.
- Aug. 24. Senior party, Senior assembly.
- Aug. 25. Class of 1944 graduates.



# Staff

Editor-in-Chief	-	-	-	-	Betty Virginia Wilson
Associate Editor	-	-	-	-	Katharine L. Lang
Business Manager	-	-	-	-	Isabel Devine

## Contributing Editors

Maxine Agnew, Beverly Beckman, Helen Cooke, Margaret King, Agnes Lauder, Phyllis Mathews, Wilhelmina McClain, Geraldine Ort, Mary Jane Rice, Mary Grace Rollins.

Photography by Howard Ward, Frostburg, Maryland.



# Autographs









FROSTBURG STATE UNIVERSITY



3 2060 00195216 3



