

**Salisbury University**  
**Jazz Brazz Big Band**

Jerry Tabor, Director

and

**Salisbury University**  
**Percussion Ensemble**

Ted Nichols, Director



# PROGRAM

## Salisbury University World Drum Ensemble Ted Nichols, Director

### **Tour of Africa.....Arr. Ted Nichols**

This piece features four African songs highlighting several indigenous cultures: Lolo, Akiwowo, Fanga and Dundunbar. This selection features African instruments including Djembe, Gankoqui (double bell) and Dundun (African bass drum). Lolo is adapted from Famoudou Konate's book *Rhythms and Songs from Guinea*.

SU World Drum Ensemble

### **Beat Ballet.....Richard K. LeVan**

This composition features an up-tempo, groove piece for four players with lots of possibilities to open it up in the solo sections. Based on a number of West African rhythmic patterns, this piece requires intricate coordination between the parts. Although no one part is particularly difficult, concentration is required so as to realize the interlocking rhythmic patterns in a fashion that seems relaxed, yet grooves.

Katie Potvin , Nyles Sanna, Josh Kahn, Tom Simpson

### **Baga Gine.....Famoudou Konate, Thomas Ott**

*Baga gine* literally means "Baga woman." The Baga are an ethnic group in northwest Guinea. The story goes: A бага woman hears music and at first she didn't want to dance, but since the music was so good that she couldn't stand it anymore, she started to dance.

SU World Drum Ensemble

### **Guaguanco/Columbia.....Arr. Ted Nichols**

This is an arrangement of two rhythms associated with the Cuban Rumba. It's a term associated with dances brought to Cuba by African slaves and Spanish colonists. *Guaguanco* is a dance between a man and woman in the roles of a rooster and hen. Rumba Columbia is a fast Rumba with a 6/8 feel. Both rhythms are based on the five-stroke clave pattern found in most Latin rhythms.

SU Percussion Ensemble

### **Samba Band - Bateria.....Arr. Ted Nichols**

The term *bateria* means "drum kit" in Portuguese and Spanish. In Brazil, the word is also used for a form of Brazilian samba band, the percussion band or rhythm section of a samba school. A samba band usually includes Tamborim, Caxia, Agogo bells, Surdos, Shakers, Cucia, Panderio, Repenique, Cymbals, Samba whistle and various other instruments. The leader uses call and response to go to each section or feature a soloist.

SU Percussion Ensemble

The top of the page features a black banner with a background of musical staves and notes. The text for the event is in white, bold font in the upper right corner of this banner.

**Jazz Braxx Big Band  
& Percussion Ensemble  
Thursday, May 10, 2012  
Holloway Hall Auditorium  
7:30 p.m.**

**Salisbury World and Percussion Ensembles**

Brian Alexander, Gabriella David, Ricky Felton, Joshua Kahn, Thomas Perrish,  
Katherine Potvin, Meghan Rollyson, Nyles Sanna, Stephanie Durham,  
Leslie McGovern, Joseph Proctor, Thomas Simpson, Matt Klima,  
Tyler Martin and Lesa Hill.

• ~ • ————— • ~ •

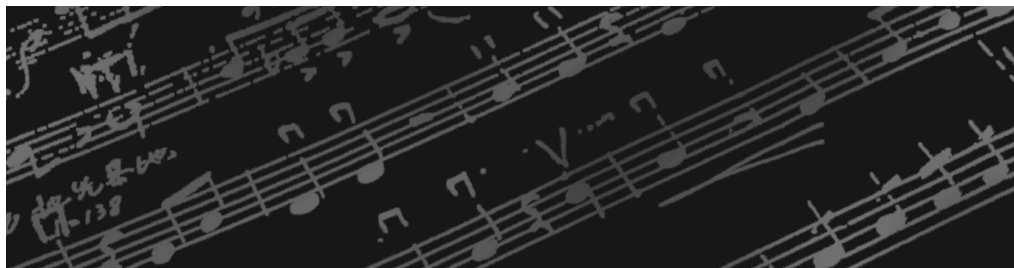
**Salisbury University Jazz Braxx Big Band  
Jerry Tabor, Director**

**PROGRAM TO BE SELECTED FROM:**

**Brazilian Fantasy .....Torrie Zito**  
**Mi Corazón .....Mike Smukal**  
**I Could Write a Book .....Hart/Rodgers, Arr. By Darmon Meader**  
**Smack Dab in the Middle .....Charles Calhoun, Arr. John Clayton**  
**Stardust.....Hoagy Carmichael, Arr. Sammy Nestico**  
**Teach Me Tonight .....Cahn, DePaul, Arr. Sammy Nestico**

**Jazz Braxx Big Band**

<b>Vocals:</b>	Leigh Usilton
<b>Saxes:</b>	Ron Wood (alto), Reginald Williams (tenor), Michael Dykes (tenor), Scott Bunting (bari)
<b>Trumpets:</b>	Tom Davis, Will Lukas, James Ellis, Judy Benton
<b>Trombones:</b>	Jarod Armes, Bill Courtney, Luke Batchelor, Rob Becky, Don Gury
<b>Piano:</b>	Alexandria Rigby
<b>Guitar:</b>	Earle Kirkley, Max Young
<b>Bass:</b>	Ben Wilshusen, Earle Kirkley
<b>Drums/Percussion:</b>	Samim Manizade, Josh Kahn, Brendan Bird, Joe Proctor



# ACKNOWLEDGEMENTS

**Dr. Janet Dudley-Eshbach**, *President*

**Dr. Diane Allen**, *Provost & Senior Vice President of Academic Affairs*

**Mrs. Martha N. Fulton & the late Charles R. Fulton**

**Dr. Maarten Pereboom**, *Dean, Fulton School of Liberal Arts*

**Dr. Linda Cockey**, *Chair, Department of Music*

**Matt Hill**, *Coordinator, Event Services/ Lighting & Sound*

**Karen Noble**, *Program Management Specialist, Department of Music*

**Dr. Christie Selway**, *Assistant Program Management Specialist, Department of Music*

**Ushers**, *Current Music Majors of the Department of Music*

If you would like to make a donation to support other performances like this one, please make your check payable to the Performing Arts Fund, specifying the organization in the memo line and mail in care of the Salisbury University Foundation, Inc. at P.O. Box 2655, Salisbury, MD 21802.

Please call 410-543-6385 for information regarding upcoming Department of Music performances.

For more information about our academic program, please visit us on the Web at [www.salisbury.edu/musicdept](http://www.salisbury.edu/musicdept).

## **Department of Music Fulton School of Liberal Arts**

Salisbury University

1101 Camden Avenue, Salisbury, MD 21801

Phone: 410-543-6385

Fax: 410-548-3002

E-mail: [lecockey@salisbury.edu](mailto:lecockey@salisbury.edu)