

Table 1

Descriptive Statistics in the Chinese Immigrant and the Korean Immigrant Samples

	1	2	3	4	5	6	7	8	9	10	<i>M</i>	<i>SD</i>
1. Ability success	-	.81**	.50**	.41**	.41**	-.05	.02	-.18*	-.15	-.10	2.75	.94
2. Difficulty success	.70**	-	.36**	.38**	.34**	-.06	-.07	.14	-.17*	-.11	2.55	.92
3. Effort success	.33**	.16*	-	.51**	.74**	.09	.11	.14	.07	.19*	3.16	.80
4. Child success	.34**	.18**	.38**	-	.51**	-.05	-.01	.02	.24*	.11	3.40	.80
5. Mood success	.31**	.27**	.53**	.38**	-	.09	.01	.18*	.17	.41**	3.07	.98
6. Ability failure	.08	.15*	.11	.07	.12	-	.69**	.56**	.49**	.59**	2.03	.71
7. Difficulty failure	.18*	.21**	.12	.09	.10	.71**	-	.49**	.54**	.47**	2.40	.81
8. Effort failure	-.03	-.13	.18	.23*	.29**	.23**	.24**	-	.63**	.77**	2.53	.87
9. Child failure	-.01	-.05	.16*	.54**	.12	.13	.25**	.28**	-	.67**	2.66	.97
10. Mood failure	.01	-.06	.17	.22**	.66**	.17**	.23**	.55**	.29**	-	2.48	1.04
<i>M</i>	3.04	2.66	3.57	3.69	2.97	1.86	1.98	2.99	3.50	2.87		
<i>SD</i>	.94	.94	.78	.75	.97	.79	.75	.86	.83	.98		

* $p < .05$. ** $p < .01$.

Note: Participants included 202 Chinese immigrant mothers and 131 Korean immigrant mothers in the United States. The *Ms* and *SDs* for the Chinese immigrant sample are presented below the diagonal and for the Korean immigrant sample are presented above the diagonal. The item responses range from 1 to 5 and item anchors are: 1 (*not at all a reason*) to 5 (*very much a reason*).

Table 2

Fit Indices for Two-Group CFA Models of Success and Failure Attributions

Model	Structure	S-B χ^2	<i>df</i>	CFI	Δ CFI	RMSEA	SRMR
<i>Success</i>							
Configural	Unidimensional	190.27	10	.71	-	.33	.13
Configural	Internal-external	178.22	8	.72	-	.36	.12
Configural	Controllable-uncontrollable	17.36	8	.99	-	.08	.03
Metric	Controllable-uncontrollable	18.24	11	.98	-.01	.06	.03
Scalar	Controllable-uncontrollable	71.55	16	.91	-.08	.15	.09
Partial scalar ^a	Controllable-uncontrollable	32.60	14	.97	-.01	.08	.05
<i>Failure</i>							
Configural	Unidimensional	147.25	10	.78	-	.29	.11
Configural	Internal-external	146.92	8	.78	-	.32	.11
Configural	Controllable-uncontrollable	13.83	8	.99	-	.07	.03
Metric	Controllable-uncontrollable	24.28	11	.98	-.01	.08	.06
Scalar	Controllable-uncontrollable	70.74	16	.80	-.18	.22	.17

ASIAN IMMIGRANT PARENTAL ATTRIBUTION

4

Partial scalar ^a	Controllable-uncontrollable	28.54	13	.98	.00	.08	.07
-----------------------------	-----------------------------	-------	----	-----	-----	-----	-----

a. The intercepts of effort and child cooperation causes were freely estimated for success attribution; the intercepts of effort, mood, and child cooperation causes were freely estimated for failure attribution.

Note. Participants included 202 Chinese immigrant mothers and 131 Korean immigrant mothers in the United States.

Table 3

Results of the Configural Invariance Model of the Controllable-Uncontrollable Structure

		Chinese Immigrant		Korean Immigrant		
Intercept		Unstandardized Factor Loading	Standardized Factor Loading	Intercept	Unstandardized Factor Loading	Standardized Factor Loading
<i>Success Attribution: Uncontrollable</i>						
Ability	3.04 [2.97, 3.11]	1.00	1.05 [.99, 1.11]	2.75 [2.67, 2.83]	1.00	1.02 [.96, 1.08]
Task Difficulty	2.66 [2.59, 2.73]	.64 [.52, .76]	.67 [.63, .71]	2.55 [2.47, 2.63]	.75 [.65, .85]	.79 [.74, .84]
<i>Success Attribution: Controllable</i>						
Effort	3.57 [3.51, 3.63]	1.00	.73 [.68, .78]	3.16 [3.09, 3.23]	1.00	.90 [.86, .94]
Child Cooperation	3.69 [3.64, 3.74]	.74 [.62, .86]	.56 [.51, .61]	3.40 [3.33, 3.47]	.68 [.58, .78]	.61 [.55, .67]
Mood	2.97 [2.90, 3.04]	1.21 [1.03, 1.39]	.70 [.65, .75]	3.07 [2.98, 3.16]	1.11 [.99, 1.23]	.82 [.77, .87]
<i>Failure Attribution: Uncontrollable</i>						
Ability	1.86 [1.80, 1.92]	1.00	.76 [.72, .80]	2.03 [1.97, 2.09]	1.00	.92 [.88, .96]

ASIAN IMMIGRANT PARENTAL ATTRIBUTION

6

Task Difficulty	1.98 [1.93, 2.03]	1.17 [.92, 1.42]	.93 [.88, .98]	2.40 [2.33, 2.47]	1.01 [.90, 1.12]	.82 [.78, .86]
<i>Failure Attribution: Controllable</i>						
Effort	2.99 [2.93, 3.05]	1.00	.74 [.69, .80]	2.53 [2.45, 2.61]	1.00	.86 [.83, .89]
Child Cooperation	3.50 [3.44, 3.56]	.71 [.60, .82]	.50 [.46, .54]	2.66 [2.58, 2.74]	.99 [.89, 1.09]	.76 [.71, .81]
Mood	2.87 [2.80, 2.94]	1.17 [.96, 1.38]	.76 [.71, .82]	2.48 [2.39, 2.57]	1.25 [1.14, 1.36]	.89 [.86, .92]

Note. Participants included 202 Chinese immigrant mothers and 131 Korean immigrant mothers in the United States. All parameters were statistically significant at the .001 level.

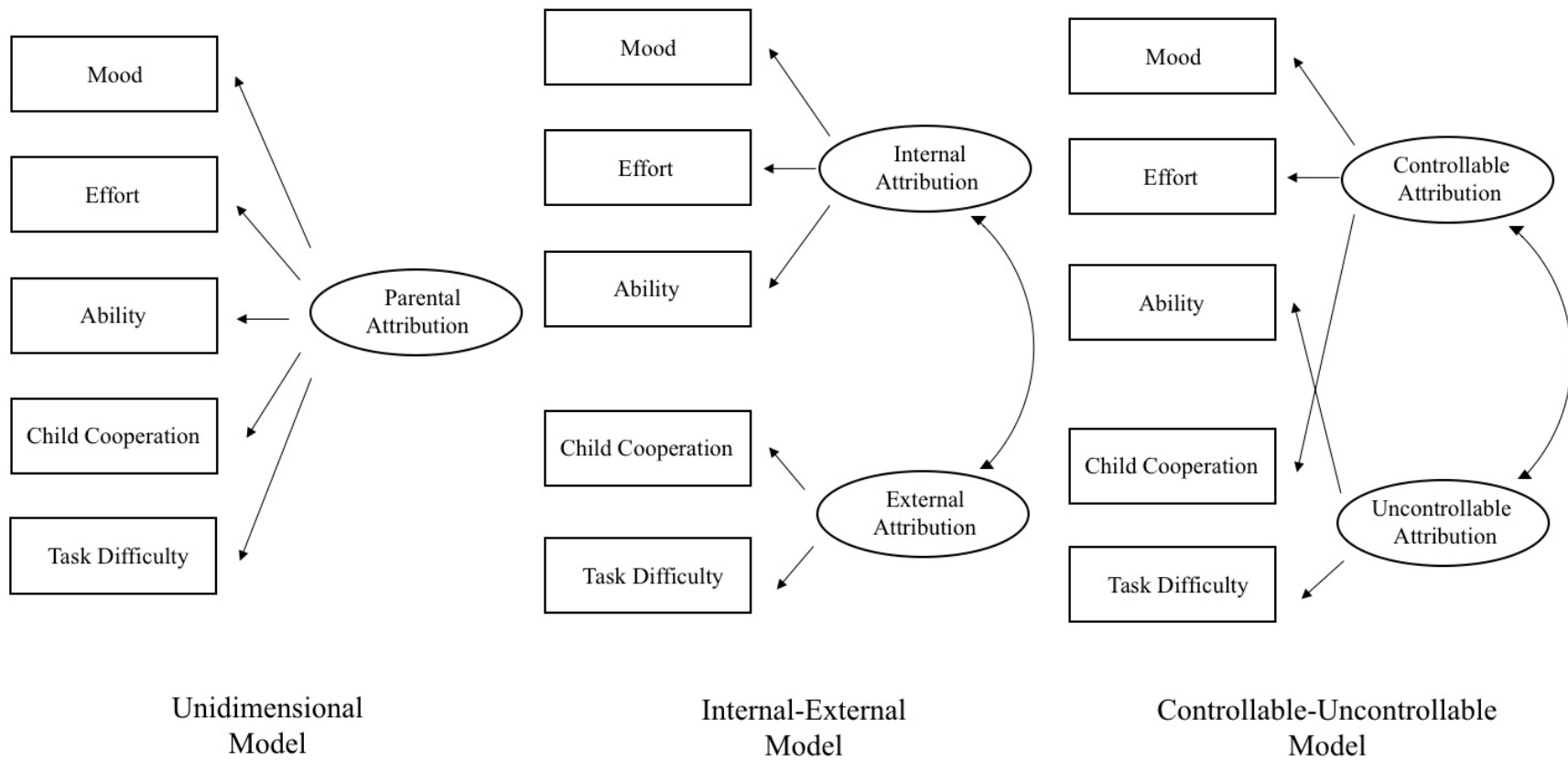


Figure 1. Factor structures of the controllable-uncontrollable, internal-external, and unidimensional models. Measurement errors were omitted for simplicity. Participants included 202 Chinese immigrant mothers and 131 Korean immigrant mothers in the United States.